

## Grove - 8 Channel i2c multiplexer/I2C Hub (TCA9548A)

SKU 103020293

Grove - 8 Channel I2C Hub is based on the TCA9548A I2C multiplexer chip, support the expansion of 8 I2C devices with the same I2C address.

We've already released the Grove - I2C Hub (4 Port) and the Grove - I2C Hub (6 Port). Wait, still not enough? Well well, we know you are seeking more. Here you are, we present you the Grove - 8 Channel I2C Hub.

More importantly, this is more than just a superposition of port quantities. As we all know, I2C devices must use different addresses in the same bus system, even use the Grove I2C Hub (4 or 6 port), the rule is still the rule. However, with the help of Grove - 8 Channel I2C Hub, you can plug up to 8 **same-address** I2C devices to the same Grove I2C system. All thanks to the TCA9548A I2C Multiplexer Chip. It adopts time-division multiplexing technology so that the same controller can control 8 I2C devices with the same address. No more worrying about address conflicts.

---

## Features

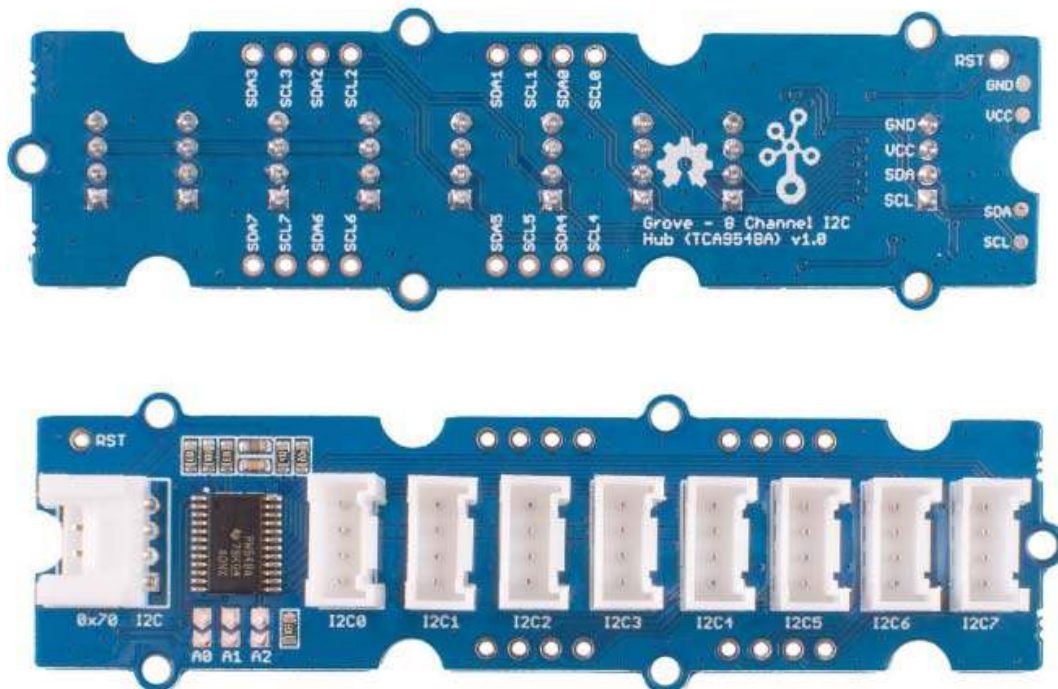
- 8 Grove I2C Port
- Support multiple devices with the same I2C address
- Support 3.3V/5V System

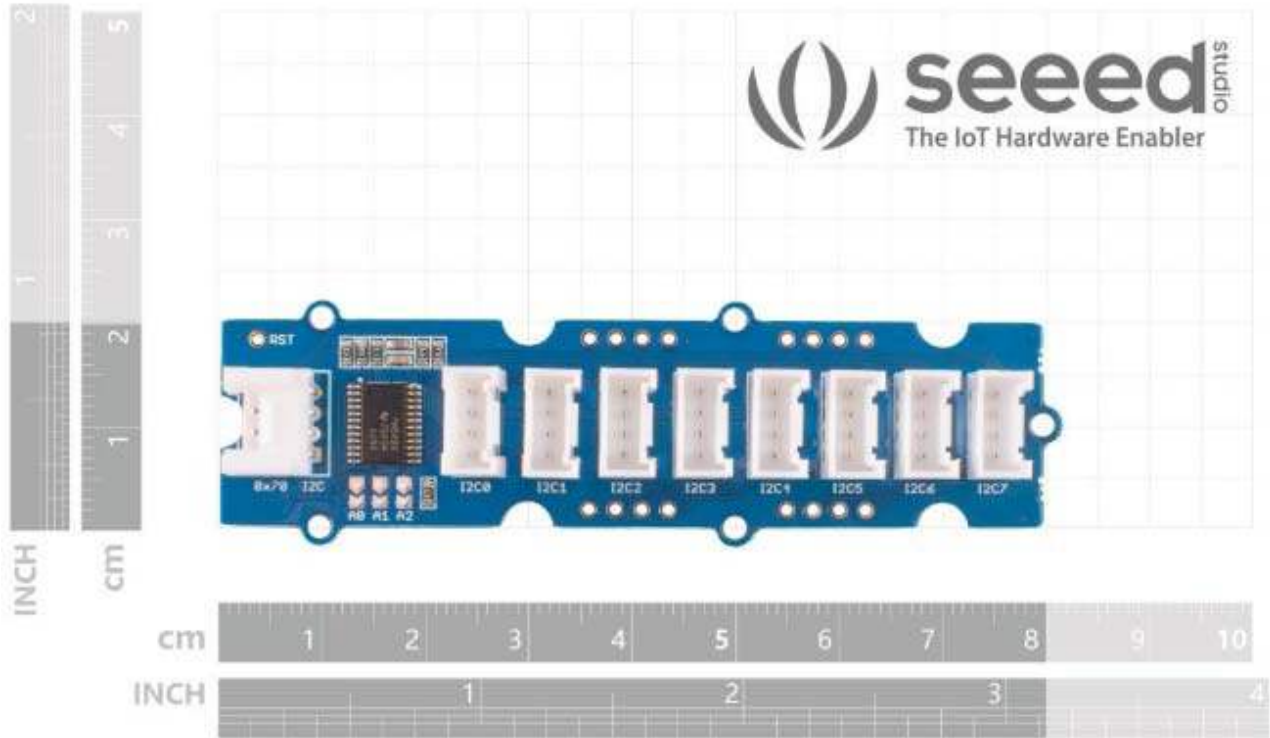
## Part List

- Grove - 8 Channel I2C Hub (TCA9548A) x1
- 20cm Grove Cable x1

## ECCN/HTS

HSCODE	8543909000
UPC	





<https://www.seeedstudio.com/Grove-8-Channel-I2C-Hub-TCA9548A-p-4398.html/1-14-20>