

### N-6U

#### Electrical Specifications (@25°C)

1. Maximum Power: 200 VA
2. Input Voltage: 230 V, 50 / 60Hz
3. Output Voltage: 115V  $\pm$  5%
4. Full Secondary Load: 1.70 Amps RMS

#### Description:

The N-6U is part of the line of Auto-Transformers that are single winding transformers in which the secondary coil is a fraction of the entire winding for voltage step-down. This causes part of the power to be transferred conductively through the windings, rather than all of the power being transferred by induction.

#### Safety:

These units are designed with 1500V isolation between the winding and the core. Materials and construction are rated for Class B insulation system.

#### Dimensions:

Unit: In inches

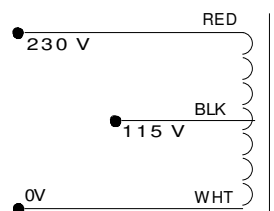
| A         | B         | C         | D                 | E               |
|-----------|-----------|-----------|-------------------|-----------------|
| 3.406 Max | 2.855 Max | 2.828 Max | 2.250 $\pm$ 0.030 | 2.25 $\pm$ 0.06 |

Weight: 3.60 lbs

Mounting Holes: 0.203 x 0.375

Connections: 7  $\pm$  1" leads, 0.250 $\pm$ 0.062" Stripped & Tin

#### Schematic:



**For 230V input:** Wht to Red

**For 115 output:** Wht to Blk

**RoHS Compliance:** As of manufacturing date February 2016, all standard products meet the requirements of 2015/863/EU, known as the RoHS 3 initiative.

\* Upon printing, this document is considered "uncontrolled". Please contact Triad Magnetics' website for the most current version.

