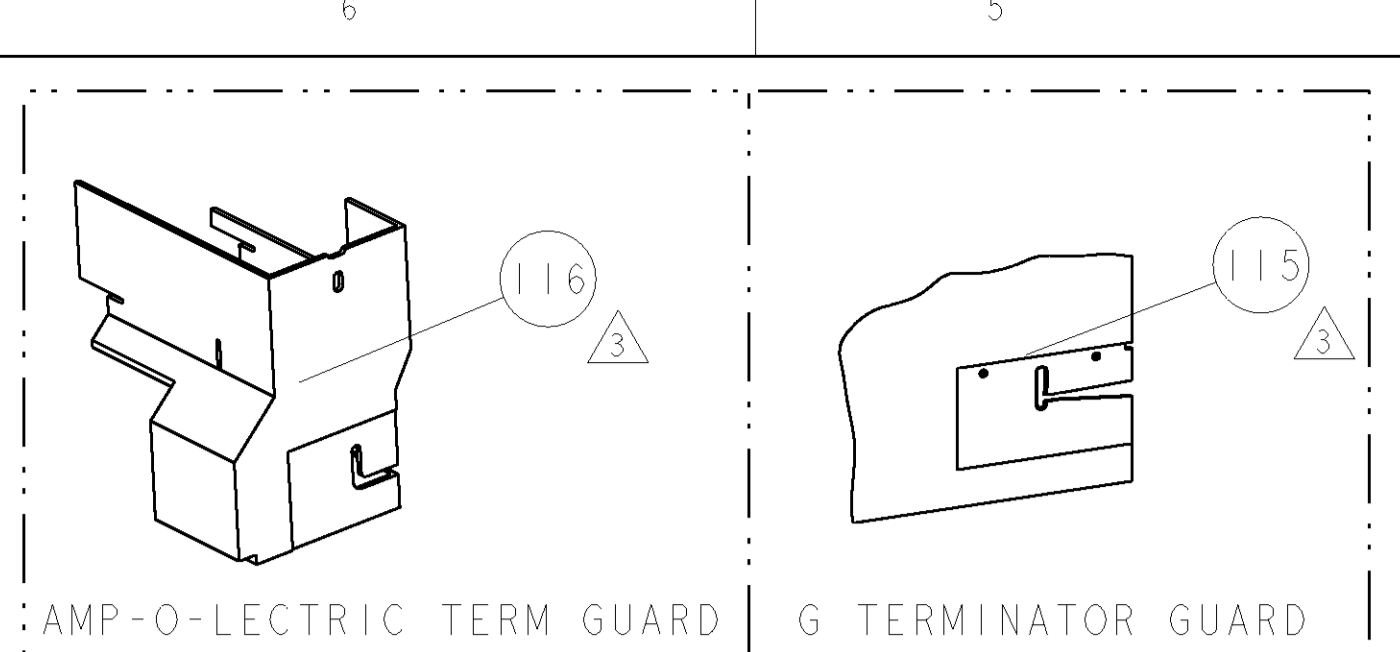


| PART NUMBER | REV | FIRST USED | POWER UNIT | FEED TYPE | DESCRIPTION |
|-------------|-----|------------|---------------|-----------|--------------------|
| 1852187-1 | B | 122500-1 | LEADMAKER | POST FEED | CUTS CARRIER |
| 1852187-2 | B | 565435-5 | BENCH MODEL K | PRE FEED | CUTS CARRIER |
| 1852187-3 | B | 354500-1 | BENCH MODEL G | PRE FEED | CUTS CARRIER |
| 1852187-6 | B | 122500-1 | LEADMAKER | POST FEED | CONTINUOUS CARRIER |
| 7-1852187-7 | A | - | - | - | SPARE PARTS |



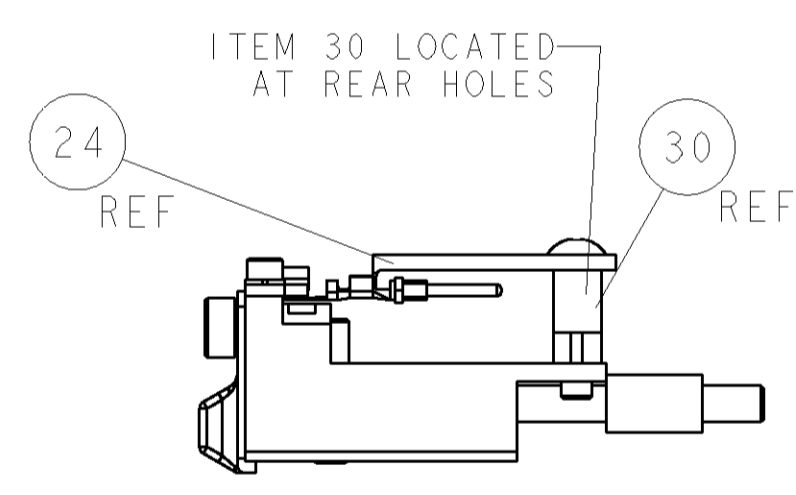
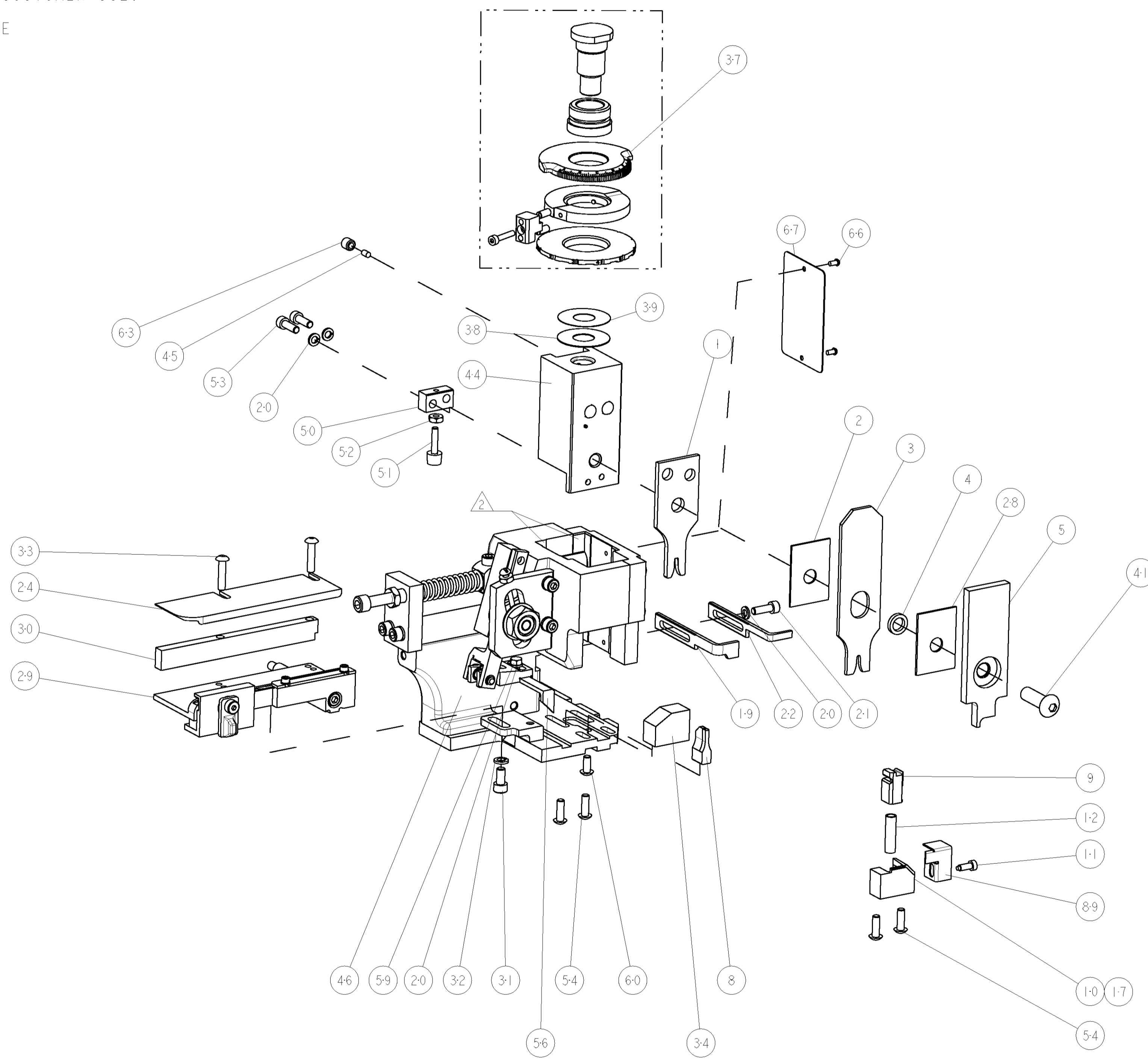
| TERMINAL NAME: TAXI TERM - M PIN 1.6 | | | | |
|--------------------------------------|----------------|--------------|-------------------------|---------------|
| TYCO ELECTRONICS PN | MANUF PN | PACKARD TERM | PACKARD CRIMP SPECS | |
| 1572914 | 15424453 | | | |
| 1572930 | 15424450 | | | |
| | | PAD LTR | CRIMP HEIGHT | WIRE SIZE |
| | | B9 | 1.25±0.05mm [.049±.002] | 1.0 mm2 |
| | | C3 | 1.20±0.05mm [.047±.002] | 0.8 mm2 |
| | | D1 | 1.10±0.05mm [.043±.002] | 0.75 mm2 |
| | | D5 | 1.03±0.05mm [.041±.002] | 0.5 mm2 |
| | | | CRIMP | SIZE |
| | | | | TYPE |
| | | | | RANGE |
| | | | WIRE | .087 [2.21mm] |
| | | | INSUL | .096 [2.44mm] |
| | | | | F 0.5-1.0 mm2 |
| | | | | Ø 1.96-2.25mm |
| WIRE STRIP LENGTH | TERM APPL SPEC | FEED | APPL INSTRUCTIONS | SET UP GAGE |
| .154 - .184 | NONE | .465 | 408-8040 | 458637-1 |

| LOC | DIST | REVISIONS | | | | | |
|-----|------|-----------|-----|---------------|-----------|-----|------|
| A | 66 | F | LTR | DESCRIPTION | DATE | DWN | APPR |
| | | A | | RELEASE | 24JAN2006 | MEH | TE |
| | | A1 | | ECR-07-012805 | 30MAY2007 | MEH | GB |
| | | A2 | | ECR-07-018521 | 07AUG2007 | MY | GB |
| | | B | | ECR-09-005847 | 12MAR2009 | MY | GB |

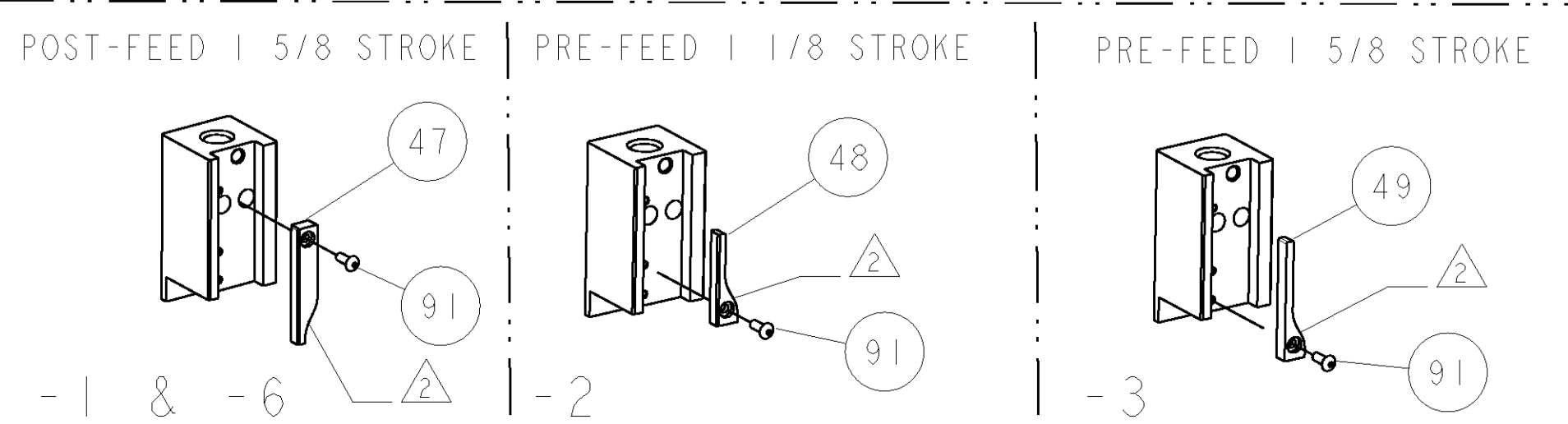
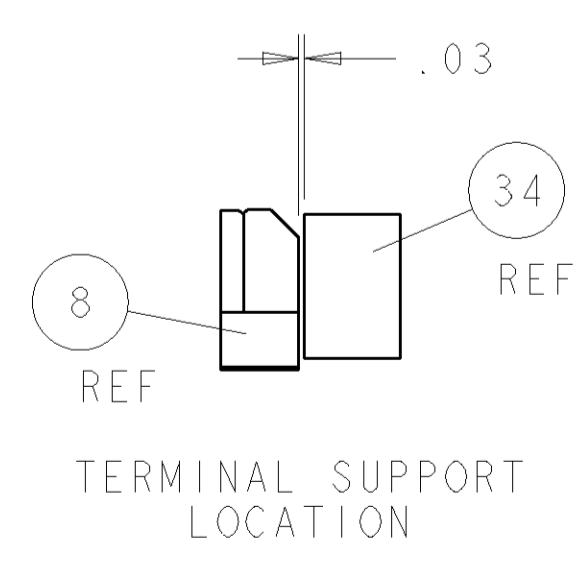
- △ RECOMMENDED SPARE PARTS
 - △ GREASE LIGHTLY
 - △ GUARD MUST BE IN PLACE WHEN OPERATING APPLICATOR IN A BENCH MACHINE
 - △ WIRE SIZE NOT RECOMMENDED BY TYCO. THIS WAS SELF-VALIDATED FOR SPECIFIC CUSTOMER USE.
5. FEED ADJUSTMENT AND STRIP GUIDE MAY BE ADJUSTED WHEN SWITCHING TERMINALS.

| TERMINAL NAME: FEMALE DELPHI HEAVY DUTY 1.6 (PACKARD CRIMP SPECS) | | | | |
|---|----------|---------|------------------------|-----------|
| TYCO ELECTRONICS PN | MANUF PN | PAD LTR | CRIMP HEIGHT | WIRE SIZE |
| 1572930 | 15424450 | B2 | 1.35±.05mm [.053±.002] | 1.0 mm2 |
| | | C0 | 1.25±.05mm [.049±.002] | 0.8 mm2 |

NOTE: CRIMP WIDTH DATA - SAME AS OTHER TABLE.



FEED TRACK POSITION



| | | | | | | | | | |
|---|---|---|-----|-----|---|---|-------------|---------------------------------------|-----|
| 3 | - | - | - | REF | - | - | 455749-1 | GUARD WINDOW | 116 |
| 3 | - | - | REF | - | - | - | 679532-1 | INSERT, GUARD | 115 |
| - | 1 | 1 | 1 | 1 | 1 | - | 1-21002-7 | SCR, BTN SKT HD CAP 6-32 X .375 | 91 |
| - | 1 | 1 | 1 | 1 | 1 | - | 318563-1 | GUARD, FRONT CHIP | 89 |
| - | 1 | 1 | 1 | 1 | 1 | - | 4088040 | SF APPL INST 408-8040 | 72 |
| - | 1 | 1 | 1 | 1 | 1 | - | 217238-1 | GENERAL INSTRUCTION PKG | 71 |
| - | 1 | 1 | 1 | 1 | 1 | - | 461264-1 | PLATE, IDENTIFICATION | 67 |
| - | 2 | 2 | 2 | 2 | 2 | - | 21017-2 | SCREW, DRIVE | 66 |
| - | 1 | 1 | 1 | 1 | 1 | - | 21009-2 | SCR, SET, SELF LOCKING 1/4-20 X .250 | 63 |
| - | 1 | 1 | 1 | 1 | 1 | - | 22733-8 | SCR, BHSC, SELF-LOCKING, 8-32 X .375 | 60 |
| - | 1 | 1 | 1 | 1 | 1 | - | 2-22603-0 | SCR, HEX HD CAP 8-32 X .312 | 59 |
| - | 1 | 1 | 1 | 1 | 1 | - | 458537-2 | PAWL, FEED | 56 |
| - | 4 | 4 | 4 | 4 | 4 | - | 2-21002-2 | SCR, BTN SKT HD CAP 8-32 X .500 | 54 |
| - | 2 | 2 | 2 | 2 | 2 | - | 2-21000-7 | SCR, SKT HD CAP 8-32 X .500 | 53 |
| - | 1 | 1 | 1 | 1 | 1 | - | 21018-5 | NUT, HEX, REG 6-32 | 52 |
| - | 1 | 1 | 1 | 1 | 1 | - | 811242-2 | BUMPER, HOLD DOWN | 51 |
| - | 1 | 1 | 1 | 1 | 1 | - | 690753-1 | SPACER, TONKER | 50 |
| - | - | - | - | - | - | - | 690602-6 | CAM, PRE FEED, 1 5/8 | 49 |
| - | - | - | - | - | - | - | 690602-5 | CAM, PRE FEED, 1 1/8 | 48 |
| - | 1 | 1 | 1 | 1 | 1 | - | 690501-4 | CAM, POST-FEED 1 5/8 | 47 |
| - | 1 | 1 | 1 | 1 | 1 | - | 459456-1 | APPL. BASIC SUB ASSY (SIDE WISE MOCA) | 46 |
| - | 1 | 1 | 1 | 1 | 1 | - | 690191-1 | PLUG, NYLON | 45 |
| - | 1 | 1 | 1 | 1 | 1 | - | 455673-1 | RAM, SIDE FEED | 44 |
| - | 1 | 1 | 1 | 1 | 1 | - | 7-21002-9 | SCR, BTN SKT HD CAP 5/16-24 X 1.00 | 41 |
| - | 1 | 1 | 1 | 1 | 1 | - | 690125-1 | SHIM SUB-ASSY | 39 |
| - | 1 | 1 | 1 | 1 | 1 | - | 469367-9 | SHIM | 38 |
| - | 1 | 1 | 1 | 1 | 1 | - | 879103-2 | FINE ADJUST HEAD SUBASSY | 37 |
| - | 1 | 1 | 1 | 1 | 1 | - | 690786-6 | TERMINAL SUPPORT | 34 |
| - | 2 | 2 | 2 | 2 | 2 | - | 2-21002-4 | SCR, BTN SKT HD CAP 8-32 X .750 | 33 |
| - | 1 | 1 | 1 | 1 | 1 | - | 21024-5 | WASHER, SPRG LOCK, REG NO 10 | 32 |
| - | 1 | 1 | 1 | 1 | 1 | - | 3-21000-4 | SCR, SKT HD CAP 10-32 X .375 | 31 |
| - | 1 | 1 | 1 | 1 | 1 | - | 1-1320908-5 | SPACER, STRIP GUIDE | 30 |
| - | 1 | 1 | 1 | 1 | 1 | - | 1633091-1 | ASSEMBLY, STRIP GUIDE | 29 |
| - | 1 | 1 | 1 | 1 | 1 | - | 1-455888-0 | SPACER, CRIMPER | 28 |
| - | 1 | 1 | 1 | 1 | 1 | - | 1320928-1 | PLATE, STRIP GUIDE | 24 |
| - | 1 | - | - | - | - | - | 690472-2 | STRIPPER | 22 |
| - | 1 | 1 | 1 | 1 | 1 | - | 2-21000-7 | SCR, SKT HD CAP 8-32 X .500 | 21 |
| - | 4 | 4 | 4 | 4 | 4 | - | 21024-4 | WASHER, SPRG LOCK, REG NO 8 | 20 |
| - | - | 1 | 1 | 1 | 1 | - | 691353-1 | STRIPPER | 19 |
| △ | 1 | - | - | - | - | - | 679625-1 | SHEAR HOLDER, FRONT (NO CUT) | 17 |
| △ | 1 | 1 | 1 | 1 | 1 | - | 3-22280-3 | SPRING, COMPRESSION | 12 |
| △ | 1 | 1 | 1 | 1 | 1 | - | 690461-1 | STOP, SHEAR | 11 |
| △ | - | - | - | - | - | - | 690459-1 | SHEAR HOLDER, FRONT | 10 |
| △ | 1 | 1 | 1 | 1 | 1 | - | 1-454276-9 | FLOATING SHEAR, FRONT | 9 |
| △ | 1 | 1 | 1 | 1 | 1 | - | 4-1633116-4 | ANVIL, COMBINATION | 8 |
| △ | 1 | 1 | 1 | 1 | 1 | - | 1-455889-4 | DEPRESSOR, SHEAR | 5 |
| △ | 1 | 1 | 1 | 1 | 1 | - | 1-238011-0 | BLOCK, CRIMPER SPACER | 4 |
| △ | 1 | 1 | 1 | 1 | 1 | - | 6-1583690-0 | CRIMPER, INSUL 0 | 3 |
| △ | 1 | 1 | 1 | 1 | 1 | - | 455888-8 | SPACER, CRIMPER | 2 |
| △ | 1 | 1 | 1 | 1 | 1 | - | 3-1633305-8 | CRIMPER, WIRE PREMIUM | 1 |

| | | | | | | | | | | | |
|--------------------|--|---|--|----------------------------------|--|---|--|-------------------------------------|--|---|--|
| DIMENSIONS: INCHES | | TOLERANCES UNLESS OTHERWISE SPECIFIED: | | DWN HERR TOJAN2006 | | CHK L GROSS TOJAN2006 | | APPR EBLIN TOJAN2006 | | Tyco Electronics Harrisburg, PA 17105-3608 | |
| | | 0 PLC ±.01 1 PLC ±.01 2 PLC ±.01 3 PLC ±.001 4 PLC ±.0001 ANGLES ±.001 | | PRODUCT SPEC APPLICATION SPEC | | SIZE CAGE CODE DRAWING NO A1 00779 C=1852187 | | RESTRICTED TO SHEET 1 OF 1 REV B | | CUSTOMER DRAWING SCALE 3:5 | |

CUSTOMER VIEWABLE ASSEMBLY