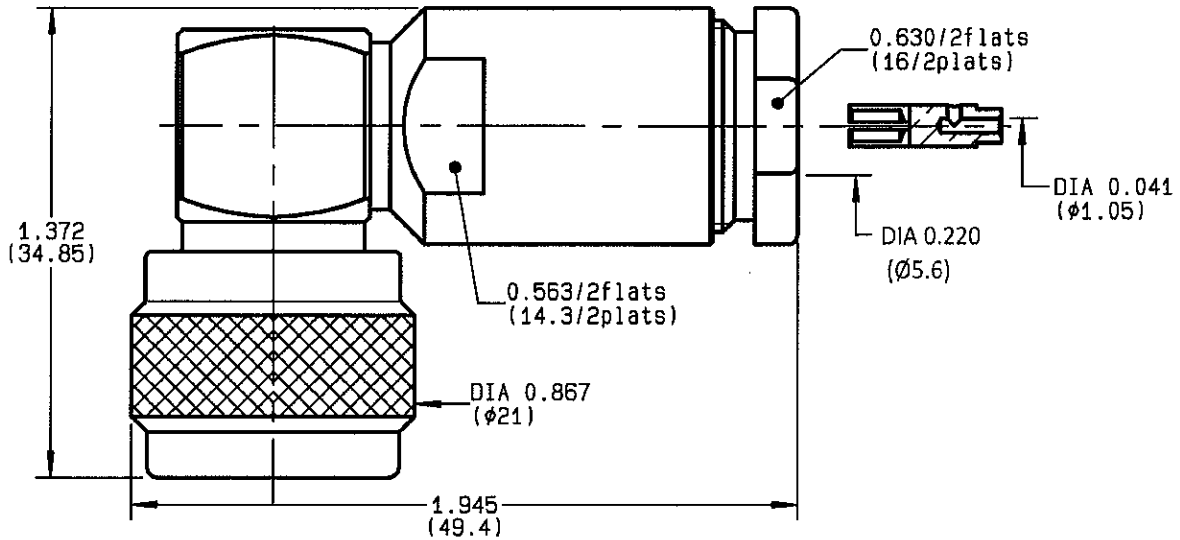


**RIGHT ANGLE PLUG CLAMP TYPE  
CABLE 5/50 S+D**

**R161.156.000**  
SERIES **N**



NOMINAL IMPEDANCE	<b>50</b> Ω
FREQUENCY RANGE	<b>0-11</b> GHz
TEMPERATURE RATING	<b>-55/+155</b> °C
V.S.W.R	<b>1.50</b> + x F(GHz)Maxi
RF INSERTION LOSS	<b>0.07</b> √F(GHz) dB Maxi
VOLTAGE RATING	<b>850</b> Veff Maxi
DIELECTRIC WITHSTANDING VOLTAGE	<b>1500</b> Veff Mini
INSULATION RESISTANCE	<b>5000</b> MΩMini
HERMETIC SEAL	<b>NA</b> Atm.cm <sup>3</sup> /s
LEAKAGE (pressurized only)	<b>NA</b>
MECHANICAL DURABILITY	<b>500</b> Cycles
WEIGHT	<b>81.4</b> gr
SPECIFICATION	<b>DHS 795.324</b>

CABLES :	<b>KX 15</b>
	<b>KX 23</b>
	<b>RG 141</b>
	<b>RG 142</b>
	<b>RG 142 FTX</b>
	<b>RG 223</b>
	<b>RG 400</b>
	<b>RG 58</b>

OTHERS CHARACTERISTICS	
CABLE RETENTION	<b>150</b> N Mini
CENTER CONTACT RETENTION	
Axial force - mating end	<b>27</b> N Mini
Axial force - opposite end	<b>27</b> N Mini
Torque	<b>NA</b> cm.N Mini
RECOMMENDED TORQUES	
Mating	<b>130</b> cm.N
Panel nut	<b>NA</b> cm.N
Clamp nut	<b>450</b> cm.N

CONNECTOR PARTS	MATERIALS	FINISH	(all values are given in micrometers)
BODY	BRASS	BBR 2	
OUTER CONTACT	BRASS	BBR 2	
CENTER CONTACT	BRASS	GOLD 0.5 OVER NICKEL 2	
INSULATOR	PTFE	-	
GASKET	SILICONE RUBBER	-	
OTHERS PIECES	BRASS	BBR 2	

ISSUE  
**1117 S**

CREATION DATE  
**18/02/1993**

FILE PART-NUMBER  
**EPC 96-07**



**RADIALL®**

BONDIMINT

The information given here is subject to change without notice.  
Design changes may be in order to improve the product.

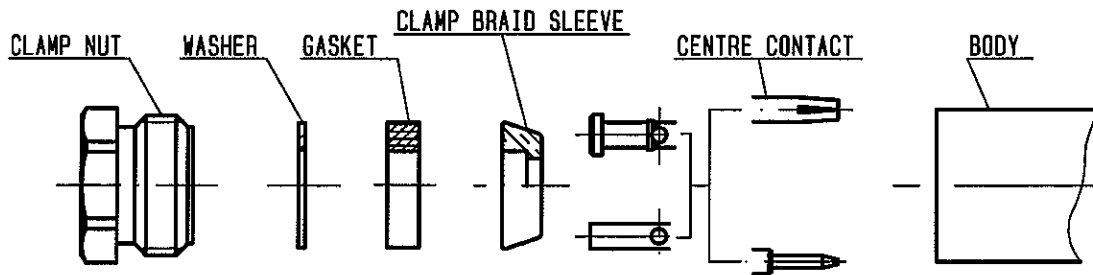
*Connect to the future*



**R161.156.000**

ISSUE 1117S

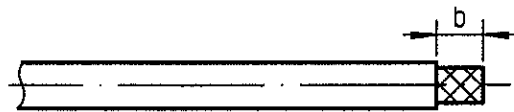
SERIES N



①

Strip the cable .

-  
-  
-  
-

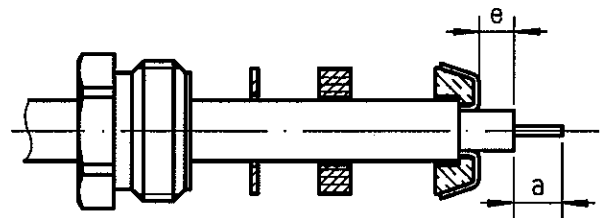


Stripping	a	b	c	d	e
inch	0.157	0.335	0	0	0.039
mm	4	8.5			1

②

Slide the clamp nut , the washer and the gasket onto the cable .  
Slide clamp braid sleeve over braid .  
Fold back braid and trim off surplus braid .  
Trim back dielectric as shown .

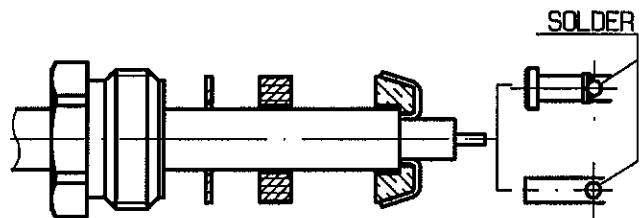
-  
-  
-



③

Solder the cable inner conductor into centre contact .

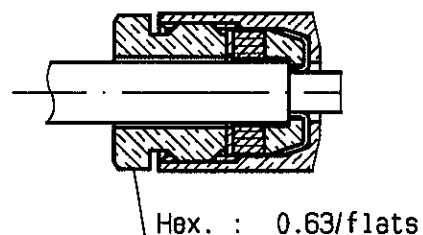
-  
-  
-  
-  
-



④

Screw sub-assembly into the connector body .  
( recommended coupling torque 44.25 in.lb )

-  
-



BONOMINI