

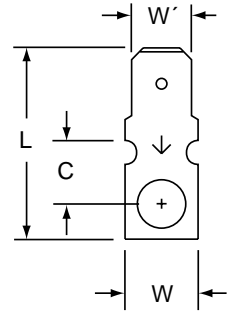


# Scotchlok™ Terminals

MA250DM/6RR thru MA250DM/10RR

Male Adapter Disconnect, Rectangular Tongue,  
Non-Insulated

## Data Sheet



Product Number	Stud Size	Male Tab Width (W') x Thickness	W	C	L
MA250DM/6RR	6	0.250 x 0.032	0.30	0.26	0.80
MA250DM/8RR	8	0.250 x 0.032	0.30	0.26	0.80
MA250DM/10RR	10	0.250 x 0.032	0.30	0.26	0.80

### Specifications

Maximum Operating Temp.: 347°F (175°C)  
Maximum Current: Same as Wire  
Terminal Material: ETP Copper  
Terminal Plating: Tin

### ⚠ WARNING

Turn power off before installing or removing terminal. All electrical work should be done according to appropriate electrical codes.

The separable connection formed by the Adapter and the mating connector(s) may require a suitable strain relief to prevent accidental separation.

## Engineering Specification

Adapters shall, electrically and mechanically, connect to one or more crimp type, separable connectors in a separable, reusable manner. They may also have a tongue portion which is flat with a central opening for mounting around a stud, or curved for mounting alongside a fuse in its holder.

The Adapter line shall offer variations in separable connections: Male Quick-Slide (0.250" wide), Female Quick-Slide (0.250" wide), Male Snap Plug (0.156" dia.), Female Snap Receptacle (0.156" and 0.180" dia.), and variations in stud mountings: ring tongue (6, 8, 10 stud), and rectangular tongue (0.250" x 0.032").

The rectangular Tongue Male Tab Adapter shall be tin plated 0.030" thick copper, having a 0.250" wide Male Tab connected to an extending rectangular tongue with a central opening for mounting around a specified stud size (6, 8, 10).

The separable connection formed by the Adapter and the mating connector(s) may require a suitable strain to prevent accidental separation.

3M and Scotchlok are trademarks of 3M

### IMPORTANT NOTICE

Before using this product, you must evaluate it and determine if it is suitable for your intended application. You assume all risks and liability associated with such use.

**Warranty; Limited Remedy; Limited Liability.** This product will be free from defects in material and manufacture as of the date of purchase. **3M MAKES NO OTHER WARRANTIES INCLUDING, BUT NOT LIMITED TO, ANY IMPLIED WARRANTY OF MERCHANTABILITY OR FITNESS FOR A PARTICULAR PURPOSE.** If this product is defective within the warranty period stated above, your exclusive remedy shall be, at 3M's option, to replace or repair the 3M product or refund the purchase price of the 3M product. **Except where prohibited by law, 3M will not be liable for any loss or damage arising from this 3M product, whether direct, indirect, special, incidental or consequential regardless of the legal theory asserted.**

# 3M

Electrical Products Division

6801 River Place Blvd.  
Austin, TX 78726-9000  
<http://www.3M.com/elpd>

Litho in USA.  
© 3M 2002 78-8125-9794-2-A