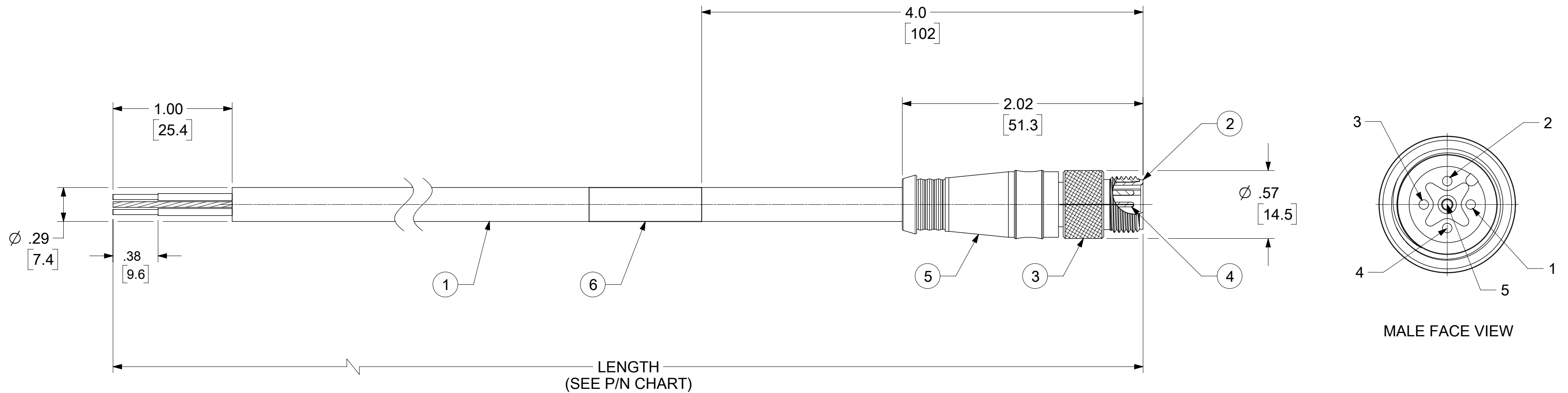
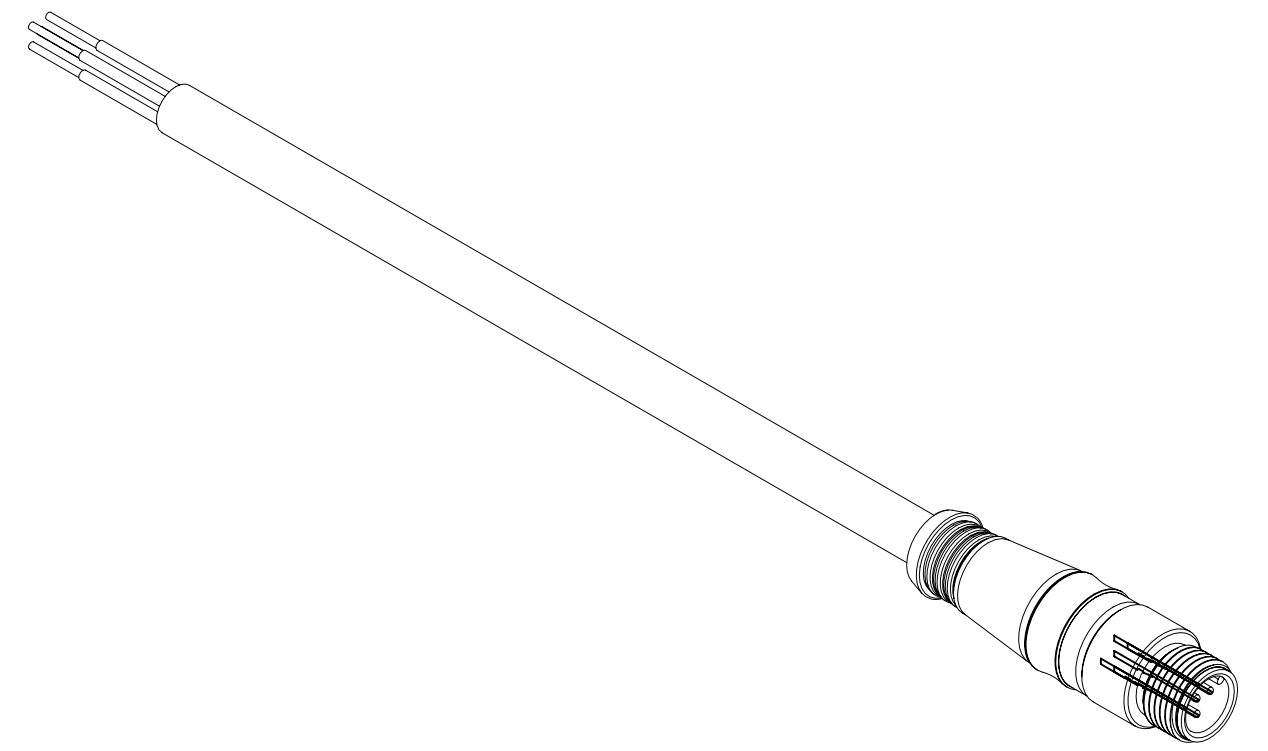


PART NO.	ENG. NO.	LENGTH
848548021	84854-8021	0.5M
848548022	84854-8022	1.0M
848548023	84854-8023	2.0M
848548024	84854-8024	3.0M
848548025	84854-8025	4.0M
848548026	84854-8026	5.0M
848548027	84854-8027	6.0M
848548036	84854-8036	10.0M

CABLE LENGTH TOLERANCES	
>.3M [1FT]:	+19mm-0 [+.75in-0]
.3 - .9M [1 - 3FT]:	+44.5mm-0 [+1.75in-0]
.9 - 1.8M [3 - 6FT]:	+55.6mm-0 [+2.19in-0]
1.8 - 3.7M [6 - 12FT]:	+88.9mm-0 [+3.50in-0]
3.7 - 7.3M [12 - 24FT]:	+165.1mm-0 [+6.50in-0]
7.3-14.6M [24 - 48FT]:	+317.5mm-0 [+12.50in-0]
14.6 - 30.5M [48-100FT]:	+622.3mm-0 [+24.50in-0]
OVER 30M [100FT]	+2% OF FINISHED LENGTH



- NOTES:
1. MATERIAL: AS NOTED
 2. FINISH: AS NOTED
 3. ELECTRICAL:
VOLTAGE: 250V
CURRENT: 4A
 4. TEMP RATING: -20°TO +80°C
 5. PROTECTION: IP67 (WHEN MATED)
 6. COUPLING THREAD: M12 X 1.0
 7. ALL DIMS ARE FOR REFERENCE UNLESS TOLERANCED OR NOTED OTHERWISE

MALE

DRAIN	1
RED +V	2
BLACK-V	3
WHITE CAN H	4
BLUE CAN L	5

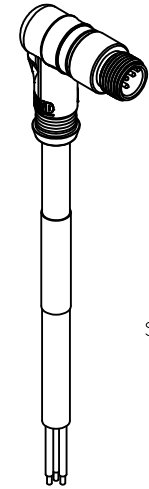
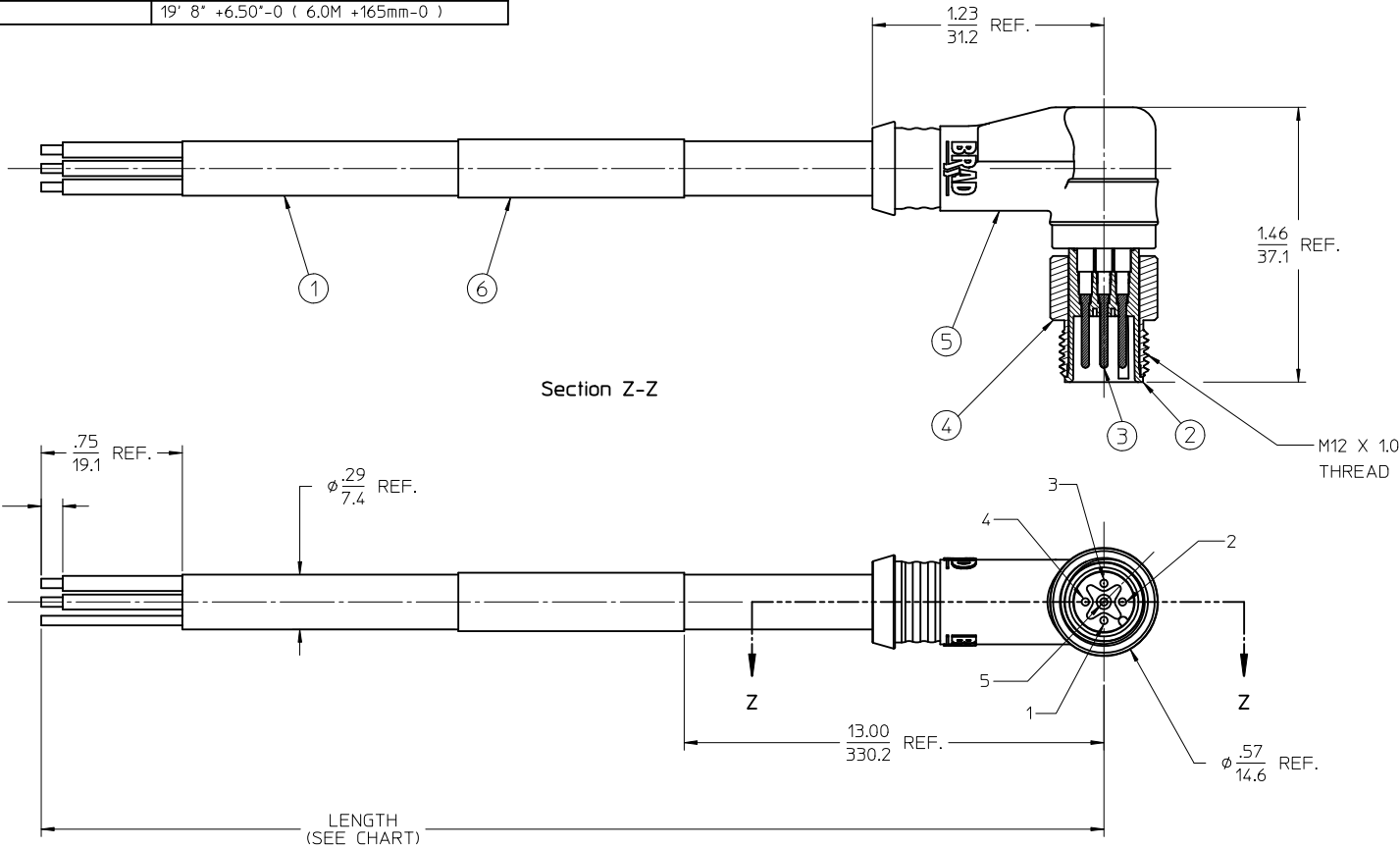
WIRE DIAGRAM

ITEM	DESCRIPTION	MATERIAL	FINISH
6	WRAP LABEL	VINYL	BLACK/YELLOW
5	OVERMOLD	TPC ©	GRAY
4	CONTACT PINS	Cu ALLOY	GOLD PLATED
3	COUPLING, MALE THREAD	BRASS	NICKEL PLATED
2	INSULATOR, 5P, MALE	NYLON	BLACK
1	CABLE, DEV-NET, 22AWG	PVC	GRAY

THIS DRAWING CONTAINS INFORMATION THAT IS PROPRIETARY TO MOLEX ELECTRONIC TECHNOLOGIES, LLC AND SHOULD NOT BE USED WITHOUT WRITTEN PERMISSION									
DIMENSION UNITS	SCALE	CURRENT REV DESC: OBSOLETE PART NUMBERS							
INCH/MM	1.5:1	<p>MICRO-CHANGE CORD ASSEMBLY MALE, 5P, M12, 22AWG, NMEA</p> <p>PRODUCT CUSTOMER DRAWING</p>							
GENERAL TOLERANCES (UNLESS SPECIFIED)									
ANGULAR TOL	± °								
4 PLACES	±								
3 PLACES	±	EC NO: 638770	2020/04/22						
2 PLACES	±	DRWN: RPRABHUM	2020/07/21						
1 PLACE	±	CHK'D: GGA	2020/07/21						
0 PLACES	±	APPR: GGA	2020/07/21						
DRAFT WHERE APPLICABLE MUST REMAIN WITHIN DIMENSIONS		THIRD ANGLE PROJECTION		DRAWING	SERIES	MATERIAL NUMBER	CUSTOMER	SHEET NUMBER	
				C-SIZE	84854	SEE P/N CHART	GENERAL MARKET	1 OF 1	

DOCUMENT STATUS	P1	RELEASE DATE	2020/07/21	04:44:25

MATERIAL NO.	ENGINEERING NO.	MADE FROM
848548028	84854-8028	1' 8" +1.75"-0 (.5M +45mm-0)
848548029	84854-8029	3' 3" +2.19"-0 (1.0M +56mm-0)
848548030	84854-8030	6' 7" +3.50"-0 (2.0M +89mm-0)
		9' 10" +3.50"-0 (3.0M +89mm-0)
848548031	84854-8031	13' 1" +6.50"-0 (4.0M +165mm-0)
		16' 5" +6.50"-0 (5.0M +165mm-0)
		19' 8" +6.50"-0 (6.0M +165mm-0)



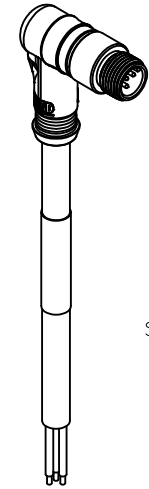
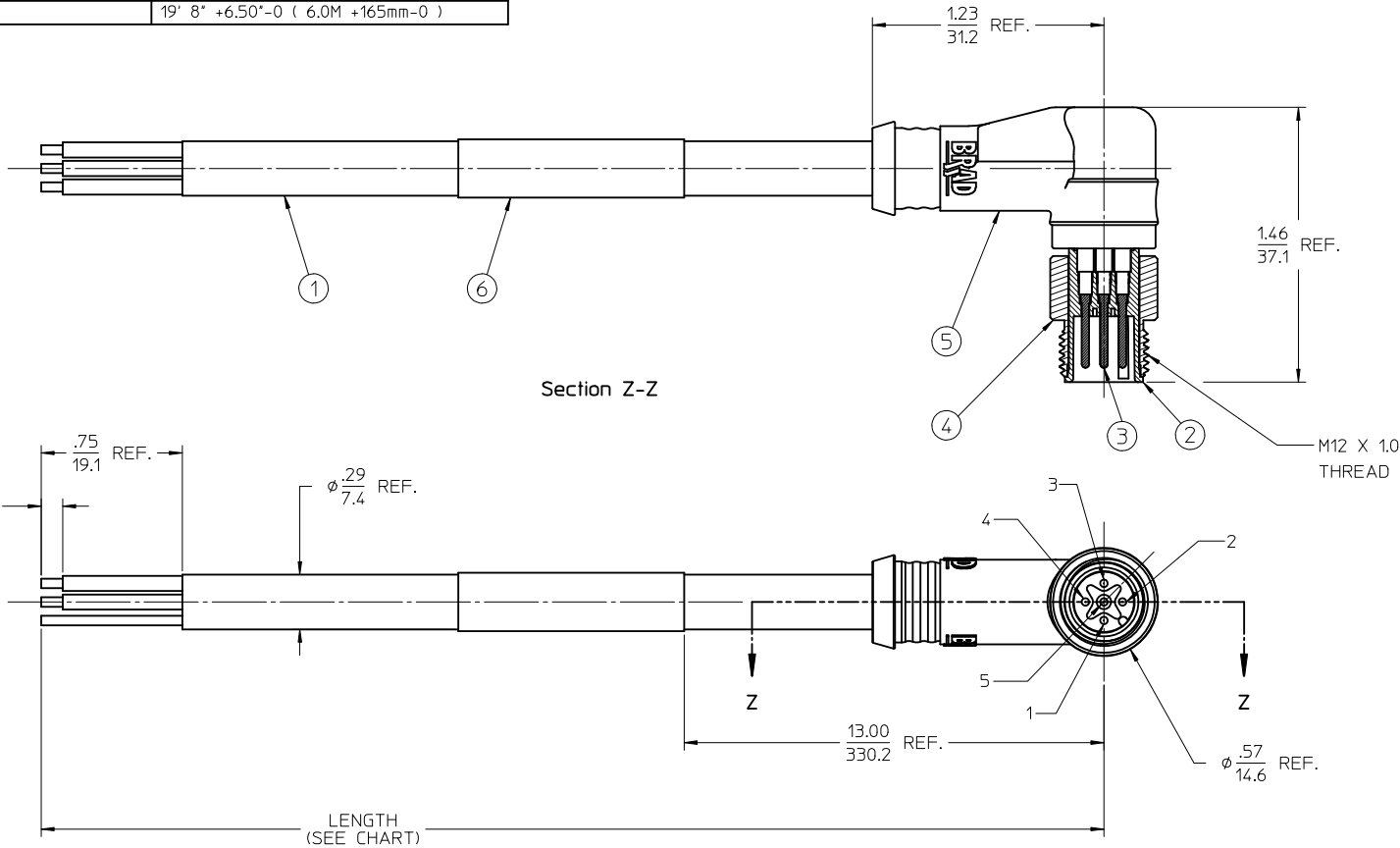
ISO1
Scale 1:1

- NOTES:
1. MATERIAL: SEE TABLE
 2. FINISHES: SEE TABLE
 3. PACKAGING: SEALED POLY BAGS WITH BAR-CODE LABEL
 4. MATES WITH: MIC 5 POLE DEV-NET RECEPTACLE
 5. ELECTRICAL SPECIFICATIONS:
CURRENT RATING: 4.0 AMPS MAX
 6. PART IS RoHS COMPLIANT

ITEM	QTY.	DESCRIPTION	MATERIAL	FINISH
6	1	LABEL	PLASTIC FILM	YELLOW/BLACK
5	1	OVERMOLD	PVC	GRAY
4	1	COUPLING NUT, EXT. THREAD	BRASS	NICKEL PLATED
3	5	CONTACT PIN	Cu ALLOY	GOLD PLATED
2	1	INSERT, 5 POLE	NYLON	BLACK
1	1	CABLE, 2 PR. SHIELDED, DEV-NET, THIN	PVC JACKET	GRAY

RELEASED EC NO: MNA2010-0402 DRWINRSTONE 2010/01/05 CHKD:B. WOODMAN 2010/01/07 APPR:J.MURPHY 2010/01/07	QUALITY SYMBOLS ▽=0 ▽=0	GENERAL TOLERANCES (UNLESS SPECIFIED)	DIMENSION STYLE IN/MM	SCALE 2:1	DESIGN UNITS INCH	THIRD ANGLE PROJECTION												
		<table border="1"> <thead> <tr> <th></th> <th>mm</th> <th>INCH</th> </tr> </thead> <tbody> <tr> <td>4 PLACES ±</td> <td>---</td> <td>± .005</td> </tr> <tr> <td>3 PLACES ±</td> <td>---</td> <td>± .01</td> </tr> <tr> <td>2 PLACES ±</td> <td>0.13</td> <td>± .01</td> </tr> <tr> <td>1 PLACE ±</td> <td>0.3</td> <td>±</td> </tr> </tbody> </table>		mm	INCH	4 PLACES ±	---	± .005	3 PLACES ±	---	± .01	2 PLACES ±	0.13	± .01	1 PLACE ±	0.3	±	DRAWN BY R. STONE
	mm	INCH																
4 PLACES ±	---	± .005																
3 PLACES ±	---	± .01																
2 PLACES ±	0.13	± .01																
1 PLACE ±	0.3	±																
DRAFT WHERE APPLICABLE MUST REMAIN WITHIN DIMENSIONS		APPROVED BY J. MURPHY	DATE 2010/01/06	MOLEX INCORPORATED														
SEE CHART		MATERIAL NO.		DOCUMENT NO.														
SIZE C		THIS DRAWING CONTAINS INFORMATION THAT IS PROPRIETARY TO MOLEX INCORPORATED AND SHOULD NOT BE USED WITHOUT WRITTEN PERMISSION																

MATERIAL NO.	ENGINEERING NO.	MADE FROM
848548028	84854-8028	1' 8" +1.75"-0 (.5M +45mm-0)
848548029	84854-8029	3' 3" +2.19"-0 (1.0M +56mm-0)
848548030	84854-8030	6' 7" +3.50"-0 (2.0M +89mm-0)
		9' 10" +3.50"-0 (3.0M +89mm-0)
848548031	84854-8031	13' 1" +6.50"-0 (4.0M +165mm-0)
		16' 5" +6.50"-0 (5.0M +165mm-0)
		19' 8" +6.50"-0 (6.0M +165mm-0)



ISO1
Scale 1:1

- NOTES:
1. MATERIAL: SEE TABLE
 2. FINISHES: SEE TABLE
 3. PACKAGING: SEALED POLY BAGS WITH BAR-CODE LABEL
 4. MATES WITH: MIC 5 POLE DEV-NET RECEPTACLE
 5. ELECTRICAL SPECIFICATIONS:
CURRENT RATING: 4.0 AMPS MAX
 6. PART IS RoHS COMPLIANT

ITEM	QTY.	DESCRIPTION	MATERIAL	FINISH
6	1	LABEL	PLASTIC FILM	YELLOW/BLACK
5	1	OVERMOLD	PVC	GRAY
4	1	COUPLING NUT, EXT. THREAD	BRASS	NICKEL PLATED
3	5	CONTACT PIN	Cu ALLOY	GOLD PLATED
2	1	INSERT, 5 POLE	NYLON	BLACK
1	1	CABLE, 2 PR. SHIELDED, DEV-NET, THIN	PVC JACKET	GRAY

RELEASED EC NO: MNA2010-0402 DRINKERSTONE 2010/01/05 CHKD:B. WOODMAN 2010/01/07 APPR:J.MURPHY 2010/01/07	QUALITY SYMBOLS ▽=0 ▽=0	GENERAL TOLERANCES (UNLESS SPECIFIED)		DIMENSION STYLE IN/MM		SCALE 2:1	DESIGN UNITS INCH	THIRD ANGLE PROJECTION	
		4 PLACES ± --- ± --- 3 PLACES ± --- ± .005 2 PLACES ± 0.13 ± .01 1 PLACE ± 0.3 ±	mm INCH	DRAWN BY R. STONE	DATE 2009/12/29	TITLE MIC CABLE ASSEMBLY MALE, 5 POLE, 90 DEG DEV-NET DROP			
		ANGULAR ± 1 °		CHECKED BY B. WOODMAN	DATE 2010/01/04	MOLEX INCORPORATED			
		DRAFT WHERE APPLICABLE MUST REMAIN WITHIN DIMENSIONS		APPROVED BY J. MURPHY	DATE 2010/01/06	MATERIAL NO. SEE CHART	DOCUMENT NO. SD-84854-024	SHEET NO. 1 OF 1	

THIS DRAWING CONTAINS INFORMATION THAT IS PROPRIETARY TO MOLEX INCORPORATED AND SHOULD NOT BE USED WITHOUT WRITTEN PERMISSION