

This document is the property of Amphenol Corporation and is delivered on the express condition that it is not to be disclosed, reproduced or used, in whole or in part, for manufacture or sale by anyone other than Amphenol Corporation without its prior consent, & that no right is granted to disclose or to use any information in this document.

Customer drawing

REVISIONS

SYM	ECN	DESCRIPTION	DATE	APPROVED
1	HK--	First Release Drawing	01/20/17	IP

D-SUB TECHNICAL DATA

SHELL: SPCC, 100u" min Tin over 50u" min Nickel over 50u" min Copper

BODY: PBT, UL 94V-0 Color: Black.

CONTACTS: Copper alloy
Gold flash over 50u" Nickel on mating area
100u" Tin over 50u" Nickel on solder area

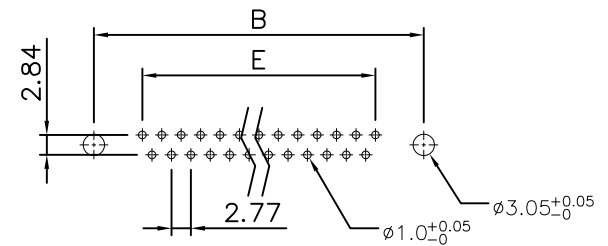
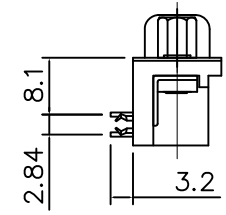
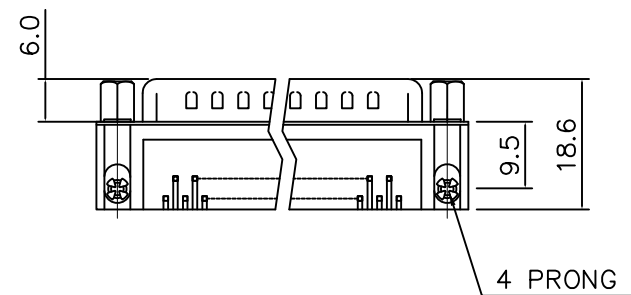
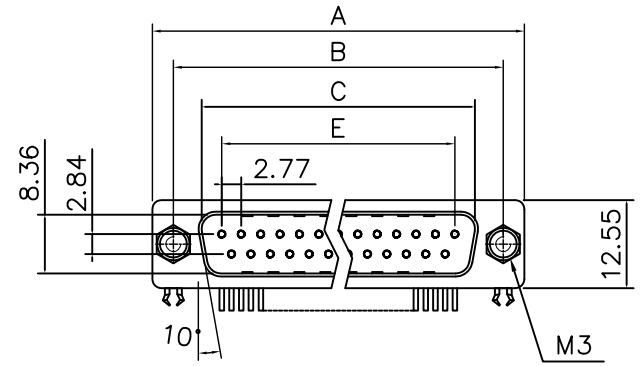
BOARDLOCK: Copper alloy, Tin plated

SCREWLOCK: Copper alloy, Nickel plated

RIVET: Copper alloy, Nickel plated

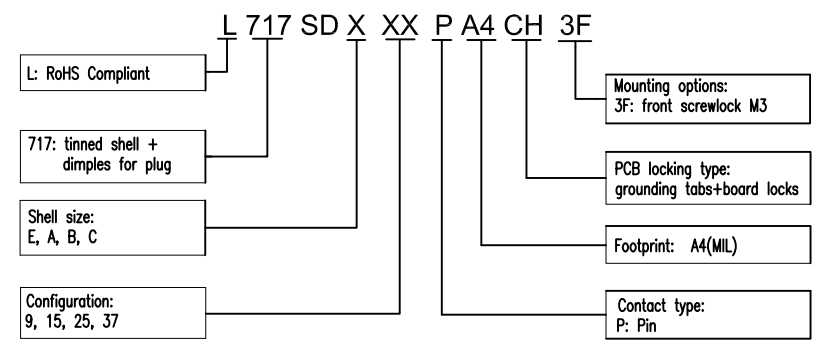
ELECTRICAL: Current Rating: 3A
Voltage Rating: 250 VAC (RMS) Max.
Contact Resistance: 20 mohms Max.
Insulation Resistance: 1000 Mohms Min
Withstanding voltage: 1000V Rms

MARKING : Amphenol...(Series No.)
Commercial reference
Manufacturing date



Recommended PCB layout
Tolerance: +/-0.05mm

PRODUCT CODE



Dimensions

Positions	A	B	C	E
9	30.81	24.99	16.92	11.08
15	39.20	33.30	25.25	19.39
25	53.05	47.04	38.96	33.24
37	69.40	63.50	55.42	49.86

UNLESS OTHERWISE SPECIFIED TOLERANCES		APPROVAL		DATE
U.S.	METRIC	DRAWN	Simon Chen	01/20/17
.X +/-	0.50	CHECKED	Tony Tang	01/20/17
.XX +/-	0.30	CHECKED		
.XXX +/-	0.20			
FRACTIONS +/-				
ANGLES +/-	5°			
FOR MATERIALS AND FINISHES SEE NOTES		DRAWING FILE :		
REMOVE SHARP EDGES		ANGLE OF PROJECTION		
DIMENSIONS				
U.S. INCHES				
METRIC MM				

Amphenol		
D-sub connector, SD Series		
TITLE	SIZE	DRAWING NO.
	A4	L717SDXXXPA4CH3F
SCALE	NONE	REV. 1
SHEET 1 OF 1		