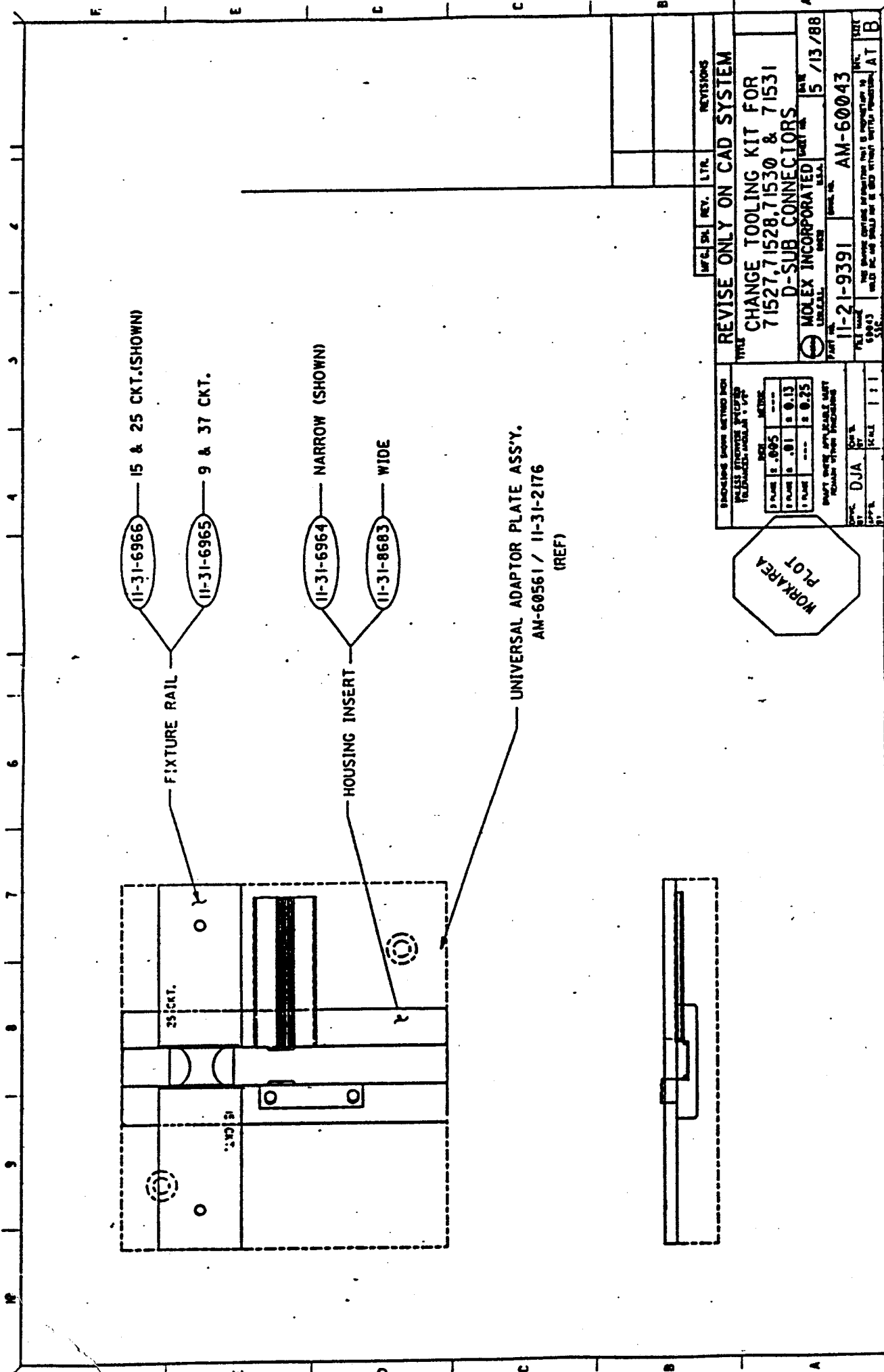


AM-60026-C

11-20 -1165

Assembling 71527-71531 Connectors Using AM-60043 (11-21-9391)
Change Parts Kit (See Fig. 3)

1. Place AM-60043-1 (11-31-6964) housing insert into large slot in fixture plate.
2. Place AM-60561-2 (11-31-2178) cable stop on to housing insert (locate in dowel holes).
3. Place AM-60561-4 (11-31-2180) cable guide in slot perpendicular to housing insert.
4. Place appropriate fixture rail on fixture plate (in dowel holes) and locate so contoured edge lines up with edge of pocket in housing insert and appropriate ckt. no. towards front (11-31-6965 for 9 & 37 ckt., 11-31-6966 for 15 & 25 ckt.).
5. Load pre-assembled connector into housing insert with cover facing down and load with appropriate end towards cable stop.
6. Place cable on approx. centerline of cable insert with outside edge of cable running along side fixture rail and slide cable and insert toward connector. Insert should butt up against connector and cable should then pass through slot in connector and stop against cable stop. The fixture rail will square off the cable with the connector. (NOTE: Cable will not touch fixture rail - there will be a .010 clearance.)
7. Press until closed and locking tabs are set.



WORKAREA
 PLOT

DATE	BY	REV.	LTR.	REVISIONS
				REVISE ONLY ON CAD SYSTEM
CHANGE TOOLING KIT FOR 71527, 71528, 71530 & 71531 D-SUB CONNECTORS				
MOLEX INCORPORATED				DATE 5 / 13 / 88
PART NO. 11-21-9391				FORM NO. AM-60043
BY DJA				DATE 5/13/88
CHECKED				DATE
APPROVED				DATE
<small>THIS DRAWING CONTAINS INFORMATION THAT IS PROPRIETARY TO MOLEX INC. AND SHOULD NOT BE DISCLOSED WITHOUT WRITTEN PERMISSION.</small>				AT B

TOOL KIT CONFIGURATION FOR:
AM-60026-C
 (REV. 2)

