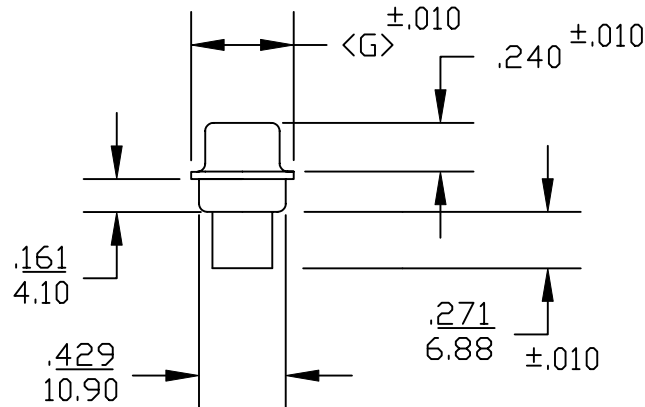
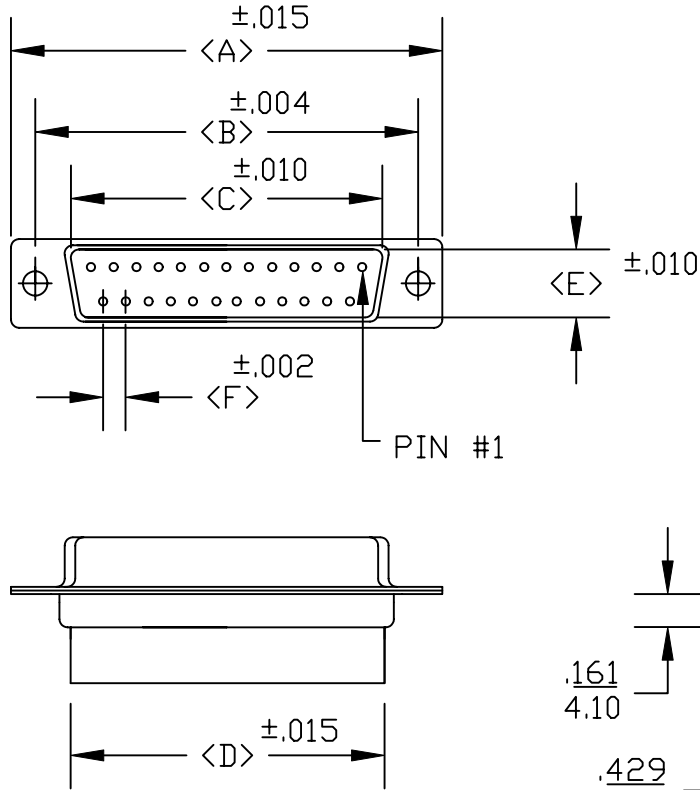


DESCRIPTION: **D-SUB FEMALE CRIMP & POKE**

POS	A	B	C	D	E	F	G
09	<u>1.213</u> 30.80	<u>.984</u> 24.99	<u>.642</u> 16.30	<u>.756</u> 19.20	<u>.311</u> 7.90	<u>.109</u> 2.77	<u>.496</u> 12.60
15	<u>1.5413</u> 39.15	<u>1.312</u> 33.32	<u>.971</u> 24.65	<u>1.091</u> 27.70	<u>.311</u> 7.90	<u>.109</u> 2.77	<u>.496</u> 12.60
25	<u>2.087</u> 53.00	<u>1.852</u> 47.04	<u>1.512</u> 38.40	<u>1.618</u> 41.10	<u>.311</u> 7.90	<u>.109</u> 2.77	<u>.496</u> 12.60
37	<u>2.732</u> 69.30	<u>2.50</u> 63.50	<u>2.157</u> 54.80	<u>2.256</u> 57.30	<u>.311</u> 7.90	<u>.109</u> 2.77	<u>.496</u> 12.60
50	<u>2.638</u> 67.00	<u>2.406</u> 61.00	<u>2.055</u> 52.20	<u>2.169</u> 55.10	<u>.429</u> 10.90	<u>.109</u> 2.77	<u>.602</u> 15.30



170-XXX-17X-000

SERIES _____
 POSITIONS _____
 009 _____
 015 _____
 025 _____
 037 _____
 050 _____
 GENDER _____
 1 = MALE
 2 = FEMALE
 TERMINATION _____
 7 = CRIMP/POKE
 SHELL PLATING _____
 1 = YELLOW CHROMATE
 2 = TIN/ZINC
 HARDWARE OPTIONS _____
 00 = NO HARDWARE
 01 = .098 4-40 CLINCH NUT BOARD SIDE
 02 = .250 4-40 CLINCH NUT BOARD SIDE
 03 = .250 4-40 CLINCH NUT MATING SIDE
 91 = .225 4-40 SPACER/BOARD LOCK
 PLATING OPTIONS _____
 0 = NO CONTACTS

SPECIFICATIONS:

MATERIALS:

SHELL: STEEL, YELLOW CHROMATE OR TIN/ZINC PLATED

INSULATOR: UL 94V-O RATED BLACK PBT +30%

FIBER-GLASS OR NYLON-66

ELECTRICALS:

CURRENT RATING: 5 AMPS

CONTACT RESISTANCE: 15 mOHMS MAX

INSULATOR RESISTANCE: 1000 MOHMS MIN

VOLTAGE: 500V AC FOR 1 MINUTE

TEMPERATURE: -50°C TO +100°C



THESE DRAWINGS AND SPECIFICATIONS ARE THE PROPERTY OF NorComp AND SHALL NOT BE REPRODUCED, COPIED OR USED AS THE BASIS FOR THE MANUFACTURE OR SALE OF APPARATUS WITHOUT WRITTEN PERMISSION.

DRAWN:

PAM JENKINS

CHECKED:

DATE:

8-18-98

DATE:

SCALE:

SHEET

OF

REV

3

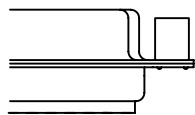
DWG NO.

170-XXX-27X-000

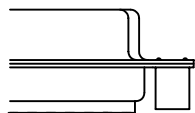
NorComp

DESCRIPTION: CLINCH NUT HARDWARE

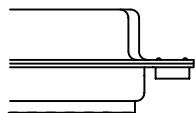
ALL CLINCH-NUTS ARE 4-40 INTERNAL THREADS



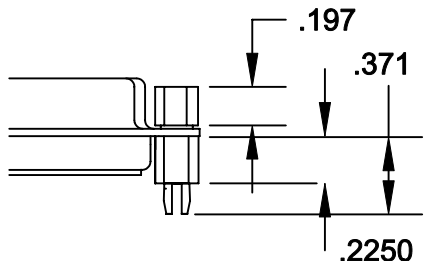
03X..... .250" (MATING SIDE) - CN8




02X250" (BOARD SIDE) - CN2



01X098" (BOARD SIDE) - CN1



91X225" (BOARD SIDE) - .197 MATING SIDE - CN10/SFS0440
 NOTE: 4-40 FEMALE SCREW LOCK IS REMOVABLE

	THESE DRAWINGS AND SPECIFICATIONS ARE THE PROPERTY OF NorComp AND SHALL NOT BE REPRODUCED, COPIED OR USED AS THE BASIS FOR THE MANUFACTURE OF SALE OF APPARATUS WITHOUT WRITTEN PERMISSION.		DRAWN: WAYNE ROBBINS	DATE: 8-23-98
	NorComp		CHECKED: PAM JENKINS	DATE: 8-24-98
SCALE:			SHEET 1 OF 1	REV 1
DWG NO.			CLINCH-NUT OPTIONS	