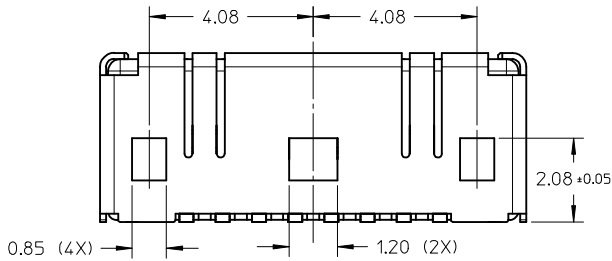
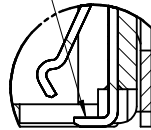


SECTION X-X



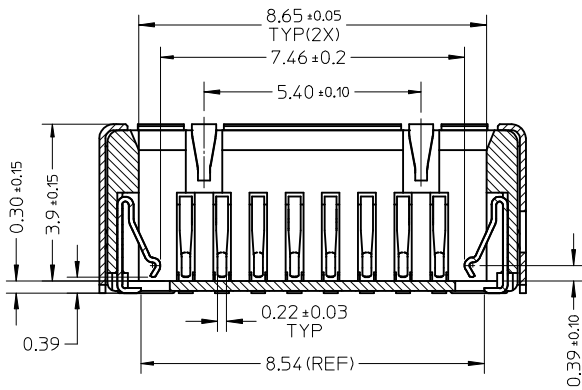
NO SOLDER PASTE
AND WICKING ALLOWED.



DETAIL 1

NOTES:

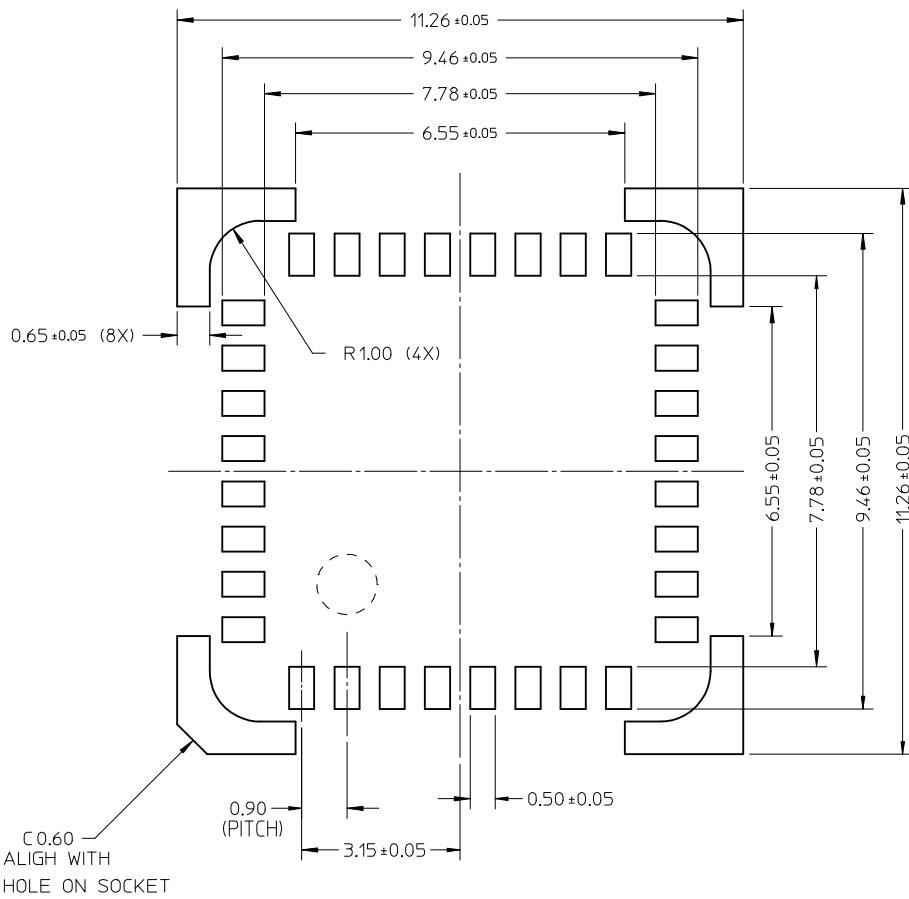
- MATERIALS
HOUSING: LCP, BLACK, UL94 V-0
TERMINAL: COPPER ALLOY.
SHELL: COPPER ALLOY
- FINISH
TERMINAL: 2-4 MICROMETER NICKEL UNDERPLATING OVERALL,
GOLD PLATING 0.3 MICROMETER ON CONTACT AREA,
GOLD FLASH PLATING ON SOLDER AREA.
SHELL: SEE THE TABLE OF PAGE 2
- PAKAGING: TAPE&REEL
- COPLANALITY TO BE 0.08MM MAX.
- APPLICABLE CAMERA MODULE SEE SHEET 3.



SECTION Z-Z

ADD PLATING TYPE EC NO: SH2015-0274 DRWN: JHU0 2015/01/14 CHKD: APPR: AYIN 2015/04/08 REV	QUALITY SYMBOLS	GENERAL TOLERANCES (UNLESS SPECIFIED)	DIMENSION STYLE	SCALE	DESIGN UNITS	THIRD ANGLE PROJECTION
	$F_{\sigma} = 0$ $F_{\tau} = 0$ $F_{\beta} = 0$	mm INCH 4 PLACES ± --- ± --- 3 PLACES ± --- ± --- 2 PLACES ± 0.10 ± --- 1 PLACE ± 0.15 ± --- 0 PLACE ± --- ± ---	MM ONLY	8:1	METRIC	
	DRAWN BY: ERIC CHENG CHECKED BY: WFDENG APPROVED BY: WFDENG DATE: 2009/07/15	ANGULAR ± 1 ° DRAFT WHERE APPLICABLE MUST REMAIN WITHIN DIMENSIONS	DRAWN BY: ERIC CHENG CHECKED BY: WFDENG APPROVED BY: WFDENG DATE: 2009/07/15	TITLE	8.5*8.5 CAMERA SOCKET SIDE CONTACT TYPE TOP MOUNT	
	MATERIAL NO. SEE TABLE SIZE: A3 THIS DRAWING CONTAINS INFORMATION THAT IS PROPRIETARY TO MOLEX INCORPORATED AND SHOULD NOT BE USED WITHOUT WRITTEN PERMISSION	DOCUMENT NO. SD-105028-301 SHEET NO. 1 OF 3				

10 9 8 7 6 5 4 3 2 1



RECOMMENDED PCB LAYOUT
TOLERANCE ±0.05 MM

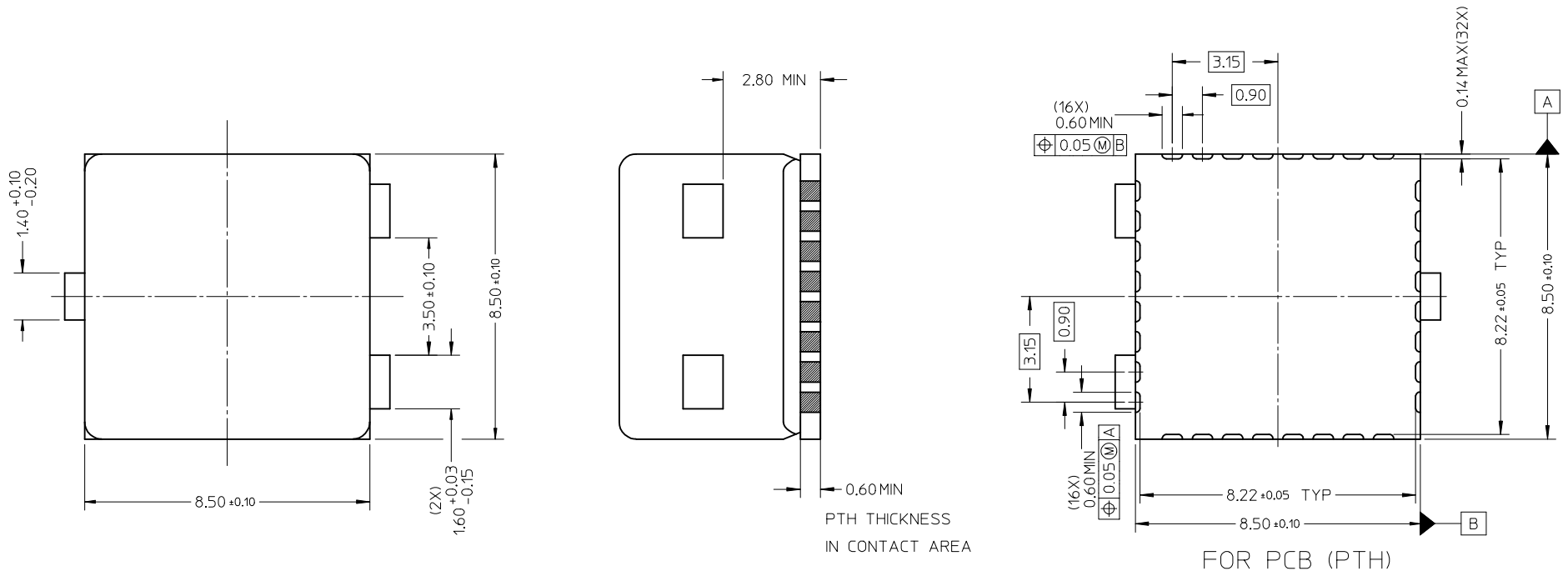
OPTION	PART NO.	PLATING SPECIFICATION
1	1050283001	1.27 MICRON MIN NICKEL UNDERPLATING OVERALL GOLD FLASH ON SOLDERING AREA
2	1050283011	1.27 MICRON MIN NICKEL UNDERPLATING OVERALL 1.5 MICRON MIN MATTE TIN ON SOLDERING AREA
3	1050283021	1.27 MICRON MIN SOLDERABILITY NICKEL OVERALL

SHELL PLATING TYPE

ADD PLATING TYPE EC NO: SH2015-0274 DRW: WJRU CHKD: APPR: AYIN REV: C	DESCRIPTION 2015/01/14 2015/04/08	QUALITY SYMBOLS $F_{\Delta} = 0$ $F_{\square} = 0$ $F_{\square} = 0$	GENERAL TOLERANCES (UNLESS SPECIFIED) mm INCH 4 PLACES ± --- ± --- 3 PLACES ± --- ± --- 2 PLACES ± 0.10 ± --- 1 PLACE ± 0.15 ± --- 0 PLACE ± --- ± ---	DIMENSION STYLE MM ONLY DRAWN BY: ERIC CHENG DATE: 2009/07/15 CHECKED BY: WFDENG DATE: 2009/07/15 APPROVED BY: WFDENG DATE: 2009/07/15	SCALE 10:1 DESIGN UNITS METRIC THIRD ANGLE PROJECTION	TITLE 8.5*8.5 CAMERA SOCKET SIDE CONTACT TYPE TOP MOUNT molex
	ANGULAR ± 1 ° DRAFT WHERE APPLICABLE MUST REMAIN WITHIN DIMENSIONS		MATERIAL NO. SEE TABLE	DOCUMENT NO. SD-105028-301	SHEET NO. 2 OF 3	
	THIS DRAWING CONTAINS INFORMATION THAT IS PROPRIETARY TO MOLEX INCORPORATED AND SHOULD NOT BE USED WITHOUT WRITTEN PERMISSION					
	SIZE A3					

9 8 7 6 5 4 3 2 1

APPLIED CAMERA MODULE



ADD PLATING TYPE EC NO: SH2015-0274 DRW:WJHUO 2015/01/14 CHKD: APPR:AYIN 2015/04/08	QUALITY SYMBOLS $F_{\Delta} = 0$ $F_{\square} = 0$ $F_{\nabla} = 0$	GENERAL TOLERANCES (UNLESS SPECIFIED)		DIMENSION STYLE MM ONLY		SCALE 8:1	DESIGN UNITS METRIC	THIRD ANGLE PROJECTION		
		4 PLACES ± --- ± --- 3 PLACES ± --- ± --- 2 PLACES ± 0.10 ± --- 1 PLACE ± 0.15 ± --- 0 PLACE ± --- ± ---	mm INCH ± --- ± --- ± --- ± --- ± 0.10 ± --- ± 0.15 ± --- ± --- ± ---	DRAWN BY ERIC CHENG	DATE 2009/07/15	TITLE 8.5*8.5 CAMERA SOCKET SIDE CONTACT TYPE TOP MOUNT				
		ANGULAR ± 1 ° DRAFT WHERE APPLICABLE MUST REMAIN WITHIN DIMENSIONS	MATERIAL NO. SEE TABLE	CHECKED BY WFDENG	DATE 2009/07/15	DOCUMENT NO. SD-105028-301				
			SIZE A3	THIS DRAWING CONTAINS INFORMATION THAT IS PROPRIETARY TO MOLEX INCORPORATED AND SHOULD NOT BE USED WITHOUT WRITTEN PERMISSION						