

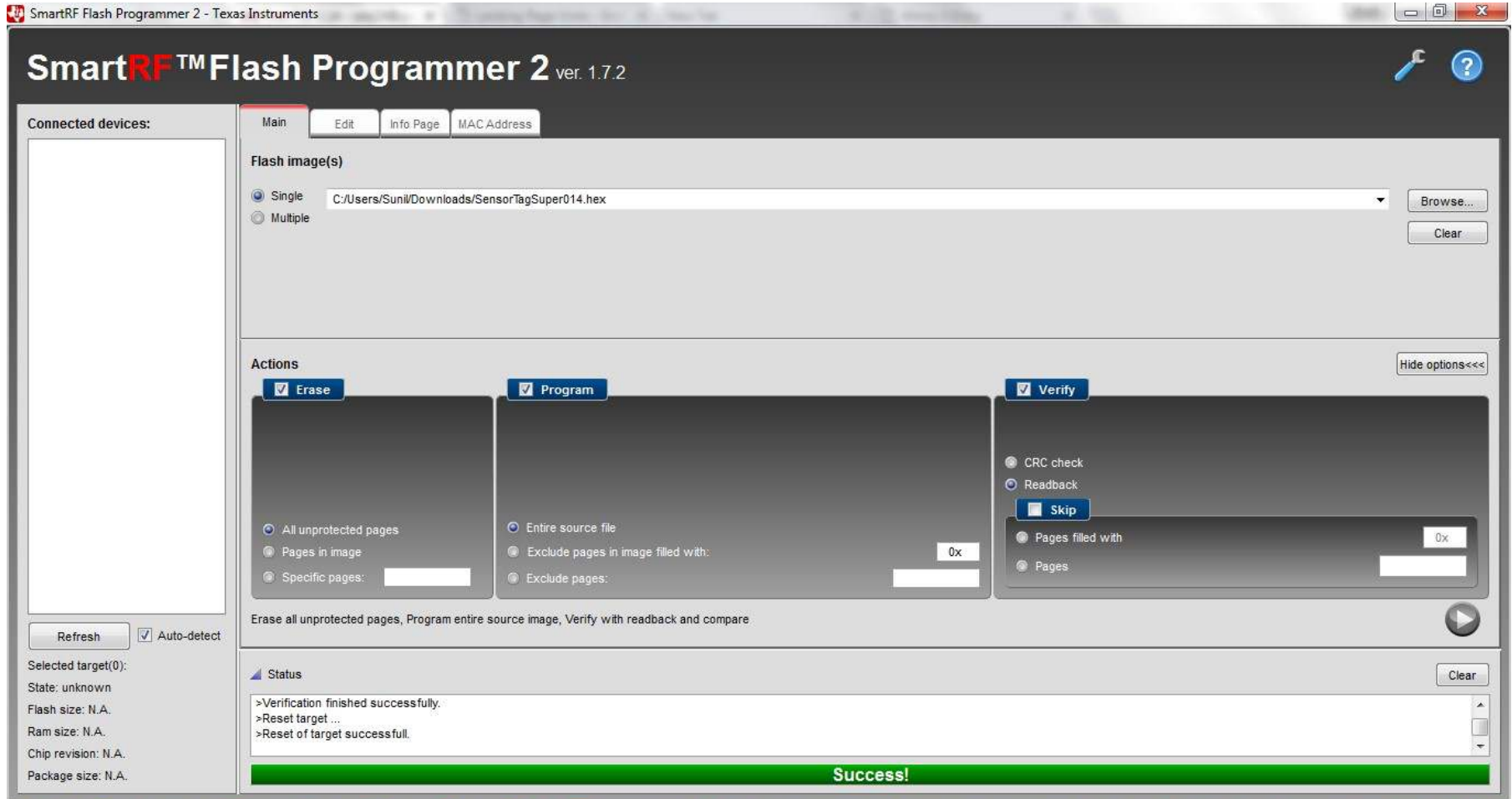


# Using the TI Sensor Tag (CC2650STK)



# Programming the enmo Firmware

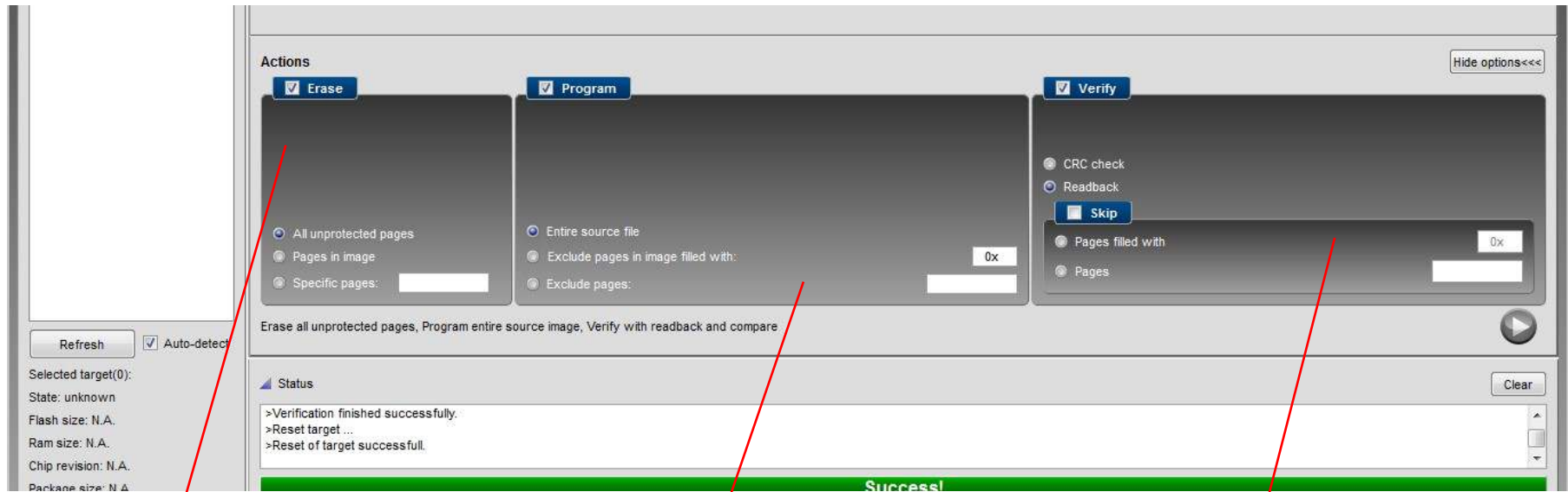
# Download & Launch TI SmartRF Flash Programmer 2 SW



# Select enmo Firmware File



# Select Programming Options



Check "Erase" box  
Select "All Unprotected Pages"

Check "Program" box  
Select "Entire Source File"

Check "Verify" box  
Select "Readback" box, but don't  
select "Skip"

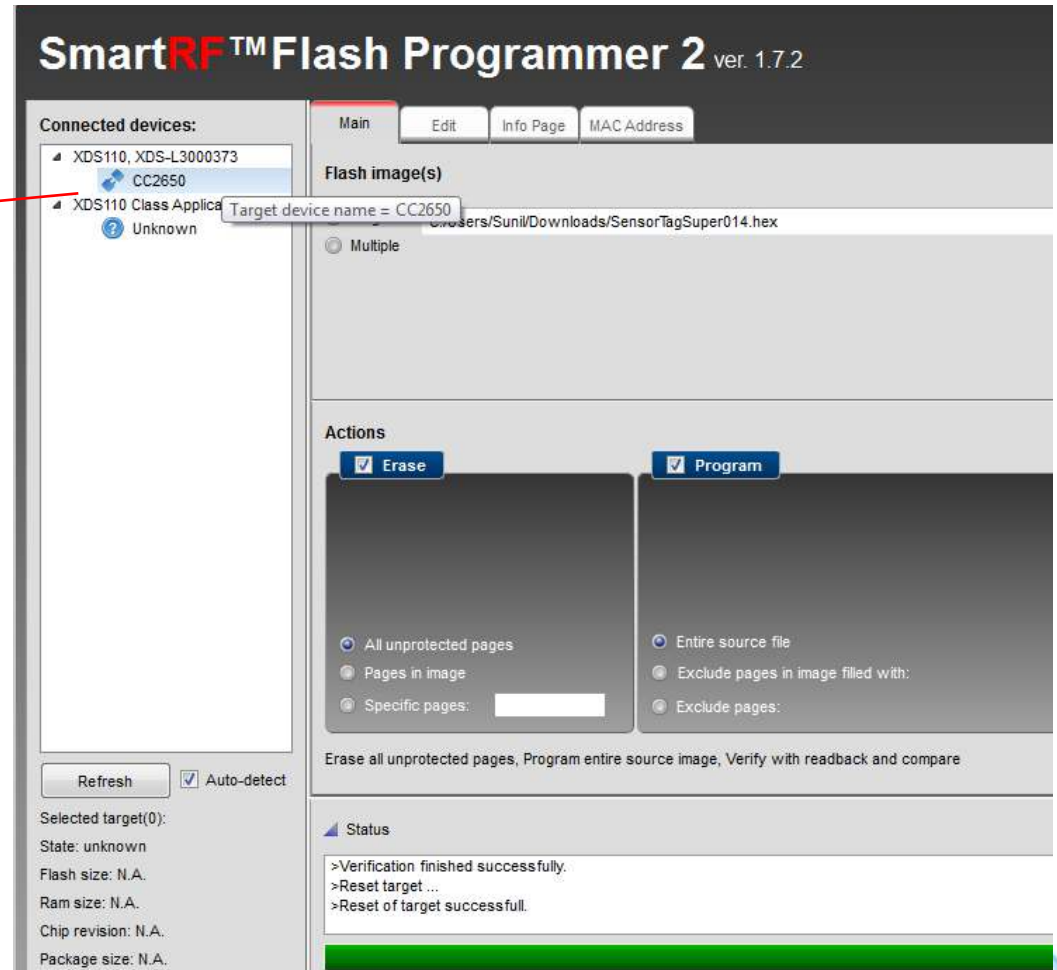
# Connect Sensor Tag w/DevPack to PC



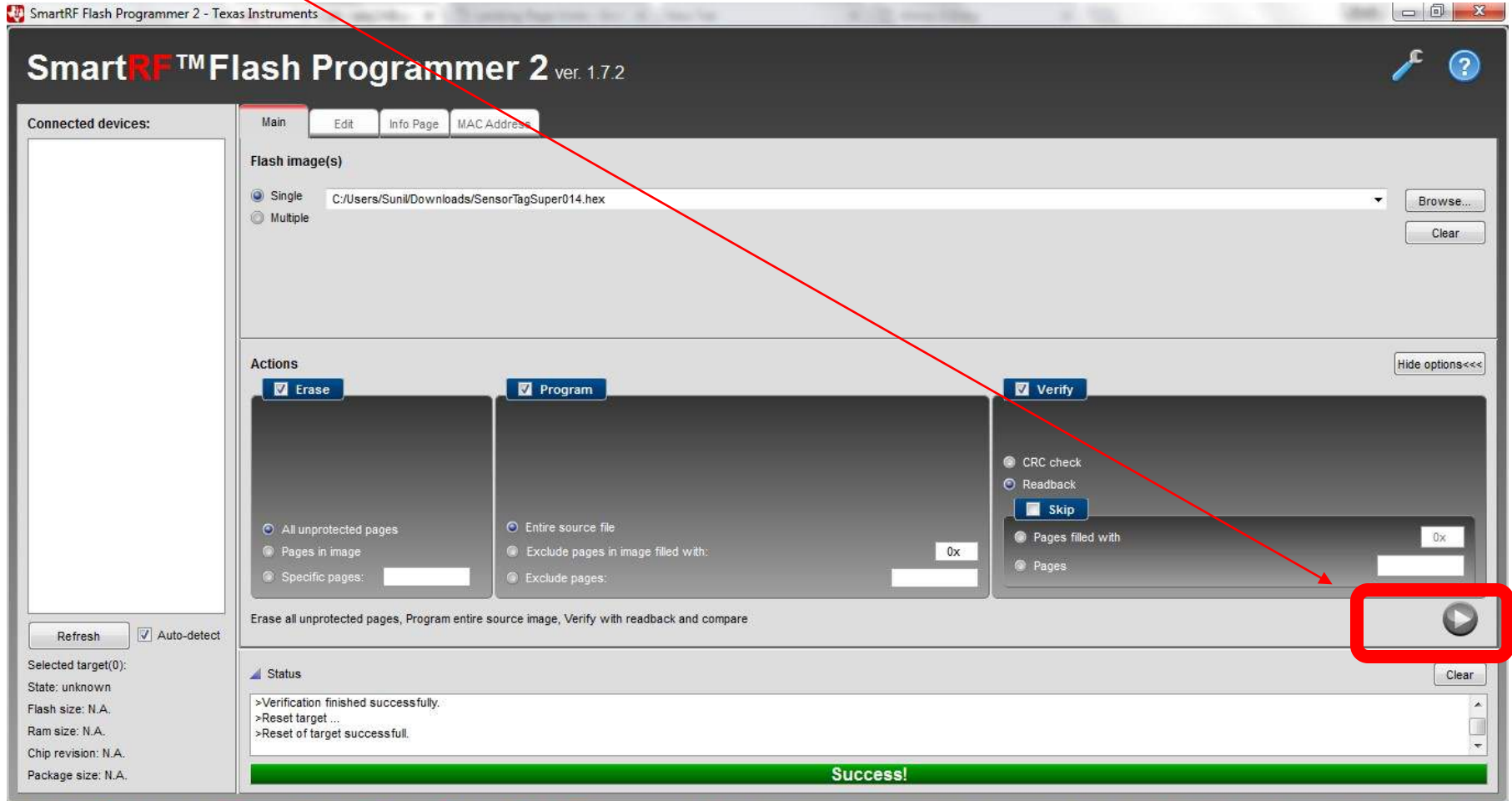
# Connect Sensor Tag w/DevPack to PC

Your Sensor Tag will show up in left hand side list.

Select it.



# GO!





# Done Programming



Green Success Bar means it worked!

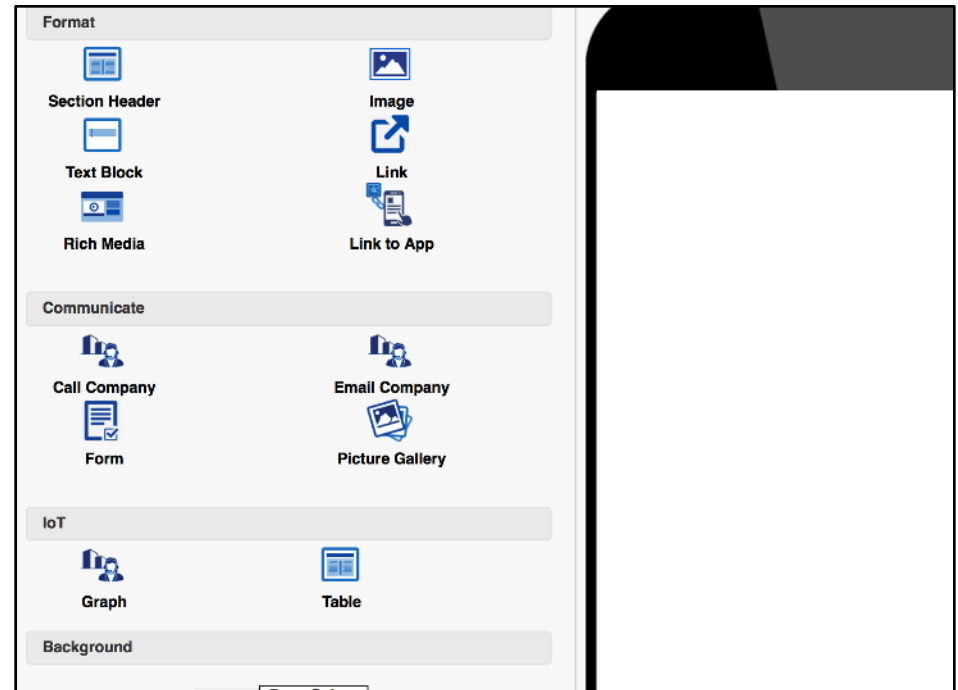
You can disconnect the DevPack from the Sensor Tag



# Using the TI Sensor Tag

# enmo Platform – Create Landing Page

- Set Background Message (to be shown in App as local message when App is in the Background)
- Create content to be shown when App is in the Foreground
  - IoT-specific elements are "Graph" and "Table" – you can put multiple of these elements on a landing page
  - You can also send captured IoT data to your Endpoint using Post and populate content from your Endpoint using Get



# enmo Platform – Create IoT Region & Rule

## ■ Create IoT Region:

- ID\_A:  
b8ad51174aaf4ffabdd5
- ID\_B: 2269c4530aec
- UUID: b8ad5117-4aaf-4ffa-bdd5-2269c4530aec
- Major: 1
- Minor: 1

## ■ Create rule

**Name:** \*

**Type:** \* TI CC2650STK

**ID\_A:** \* b8ad51174aaf4ffabdd5

**ID\_B:** \* 2269c4530aec

**UUID:** \* b8ad5117-4aaf-4ffa-bdd5-2269c4530aec

**Major Value:** 1

**Minor Value:** 1

**Calibrated Power at 1m:**

**Name:**

**Status:** Active

**Filter:**

**App ID:** All

**Device Id:** All

**Rule:**

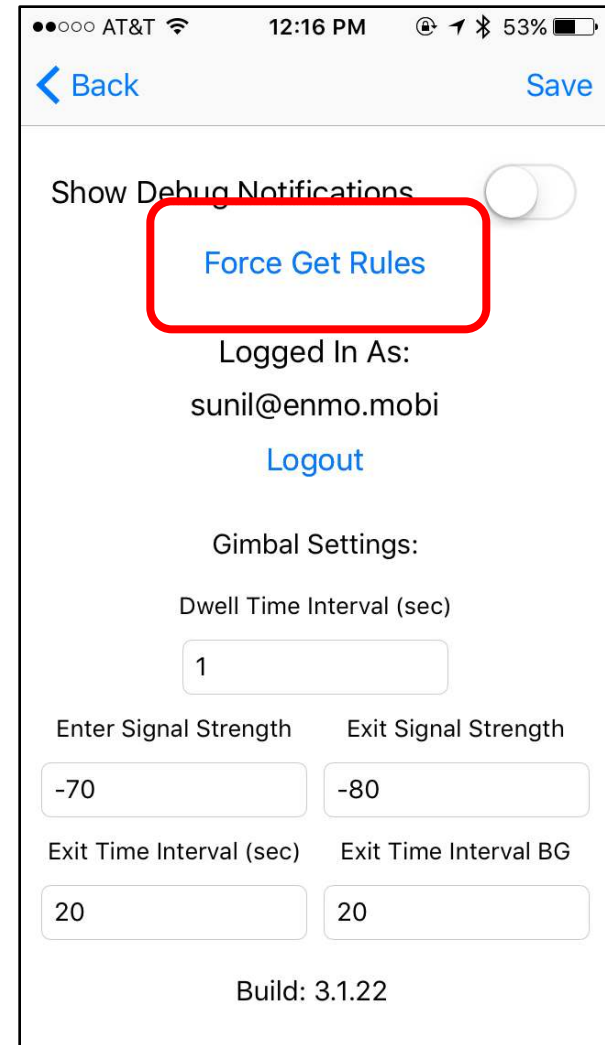
**Upon:** Entry

**Region Type:** Beacons

**Region:** Please select...

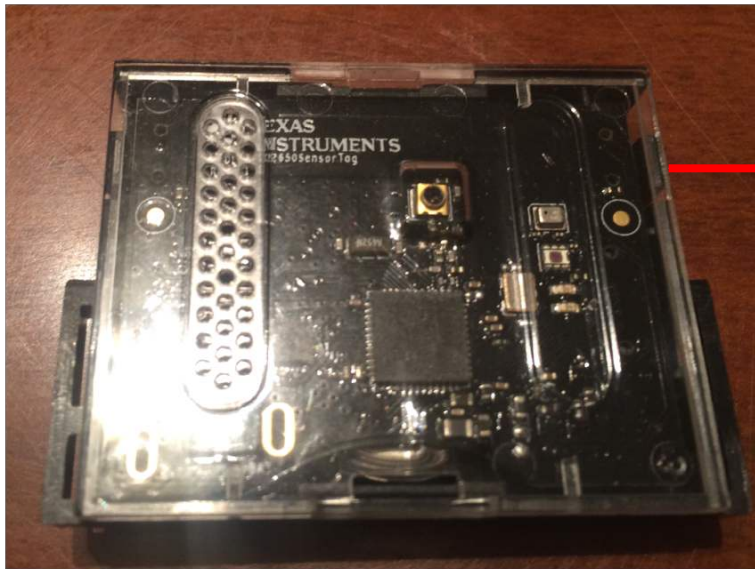
# enmo App

1. Go to Settings in App and Tap “Force Get Rules”
  - Your rules will be pushed to the App

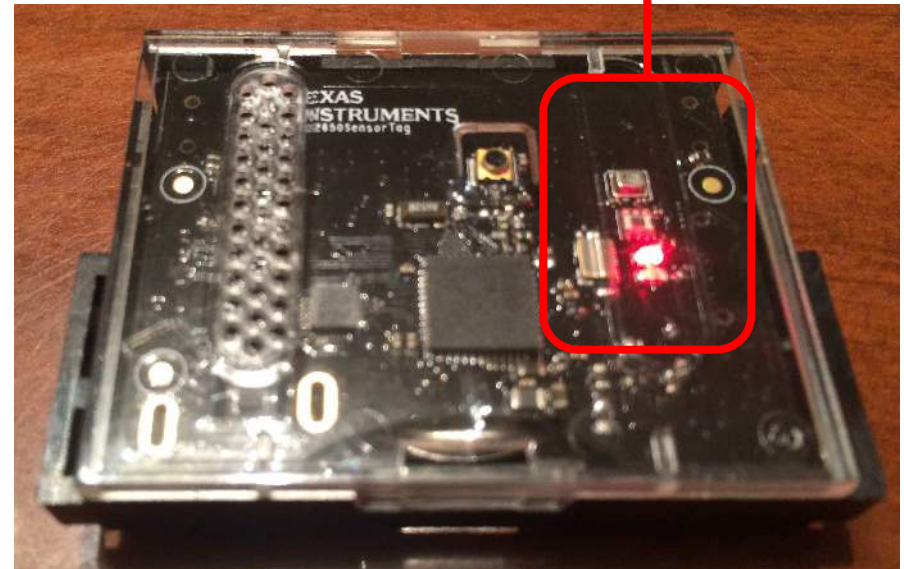


# Push Button on Right Side of Sensor Tag to Start Data Logging

Push This Button to Start Data Logging



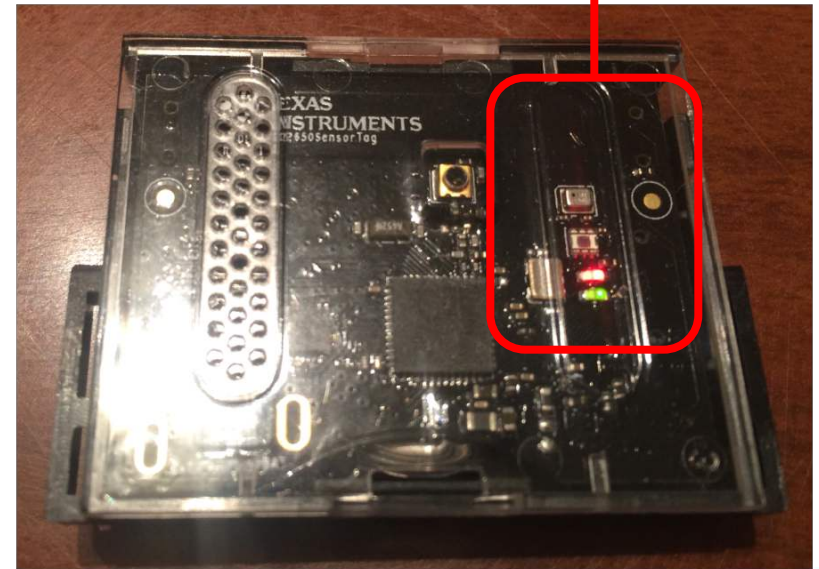
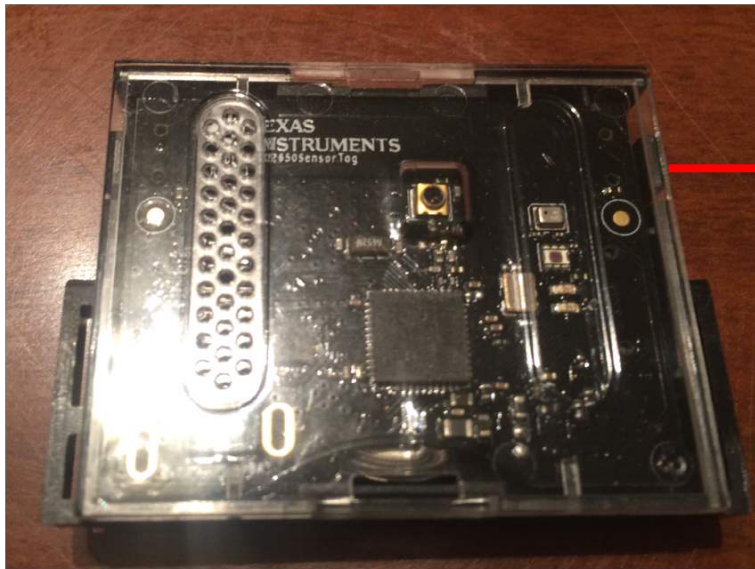
Red Light Will Blink to Indicate Data is Being Logged



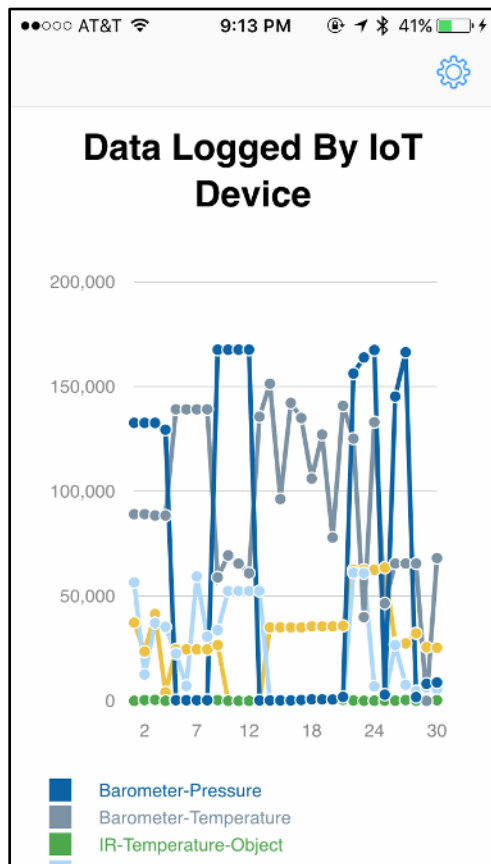
# Push Button on Right Side Button Again to Start Data Logging

Push This Button to  
Stop Data Logging

Both Red & Green Lights Will Blink to  
Indicate Data is Being Read by App



# Your Landing Page Will Display After Red & Green Lights Stop Blinking



- Need to change what's displayed in the landing page?
- Just revise it in the enmo Platform and capture data again
- Iterate as often as you'd like



# Notes

1. Be sure to wait ~30-seconds after landing page is displayed before starting data logging again
  - Capturing of IoT data by the App is triggered by the IoT device transmitting as a Beacon generating an “Entry” on the phone
  - An “Exit” on the Beacon needs to occur before the next Entry can be detected
  - An Exit takes ~30-seconds to be detected by the phone, hence the 30-sec wait time mentioned above
2. enmo’s initial TI firmware release supports capturing 51 records
  - Data will wrap after 51<sup>st</sup> record

# FAQ

- Can TI data be read when the enmo App is in the background:
  - Yes, TI data will be read even if App is in the background (screen can be active or off, black screen)
  - If you setup your rule according, you'll see the local message you setup in the landing page
  - When you bring the enmo App into the foreground, you'll see the actual landing page