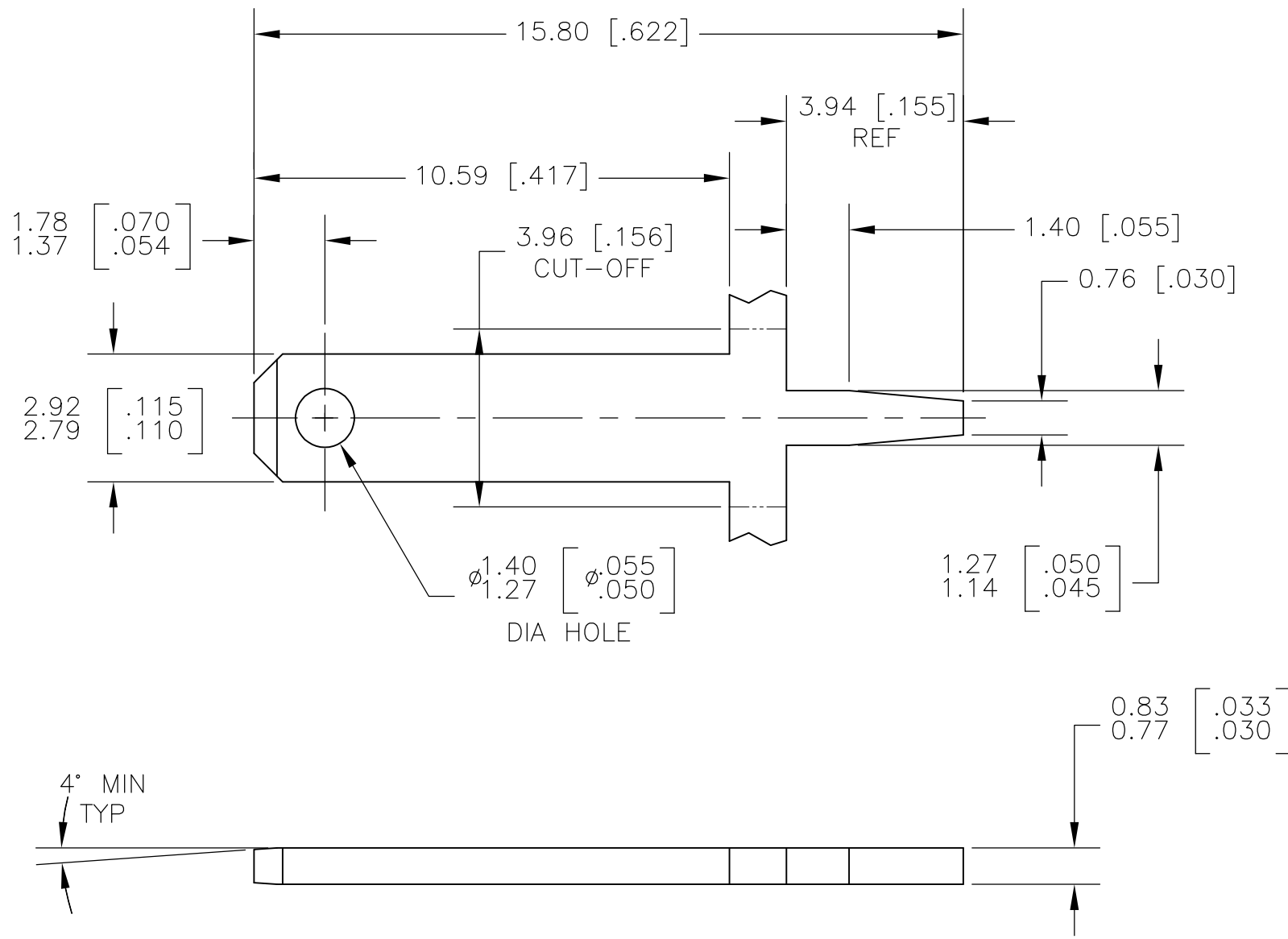


LOC	DIST	REVISIONS					
AF	50	P	LTR	DESCRIPTION	DATE	DWN	APVD
		G		REVISED PER ECR-13-001204	22JUN13	KH	PD



- 1 CONTINUOUS STRIP ON REELS
- 2 SOLDER TINE PLATED TO COMPLY WITH SOLDERABILITY SPEC IEC 60512-12-1.
- 3 FITS .048/.044 DIA HOLE IN PC BOARD. WHEN PLATED THRU HOLES ARE TO BE USED, ADJUSTMENT TO THE HOLE DIAMETERS SHOULD BE MADE TO ALLOW FOR THE PLATING.
- 4 0.00381 [.000150] MIN TIN PLATE OVER 0.00254 [.000100] MIN COPPER.
- 5 .000150 MIN NICKEL PLATE.
- 6 PRELIMINARY - NOT FOR PRODUCTION.

5	TEMPER 3 STEEL	6	63756-2
4	BRASS		63756-1
FINISH	MATERIAL	PART NO.	
STE TE Connectivity			
NAME TAB, FASTON, P.C.BOARD, 2.79 [.110] SERIES			
SIZE	CAGE CODE	DRAWING NO	RESTRICTED TO
A3	00779	C-63756	-
CUSTOMER DRAWING			SCALE 8:1 SHEET 1 OF 1 REV G

THIS DRAWING IS A CONTROLLED DOCUMENT.	
DIMENSIONS: mm[INCHES]	TOLERANCES UNLESS OTHERWISE SPECIFIED:
	0 PLC ± - 1 PLC ± - 2 PLC ± 0.25 [.010] 3 PLC ± - 4 PLC ± - ANGLES ± -
MATERIAL SEE TABLE	FINISH SEE TABLE

DWN	JR RUTH	12DEC00
CHK	MS FEHER	12DEC00
APVD	G PORTA	12DEC00
PRODUCT SPEC		
APPLICATION SPEC	114-2115	
WEIGHT	-	