

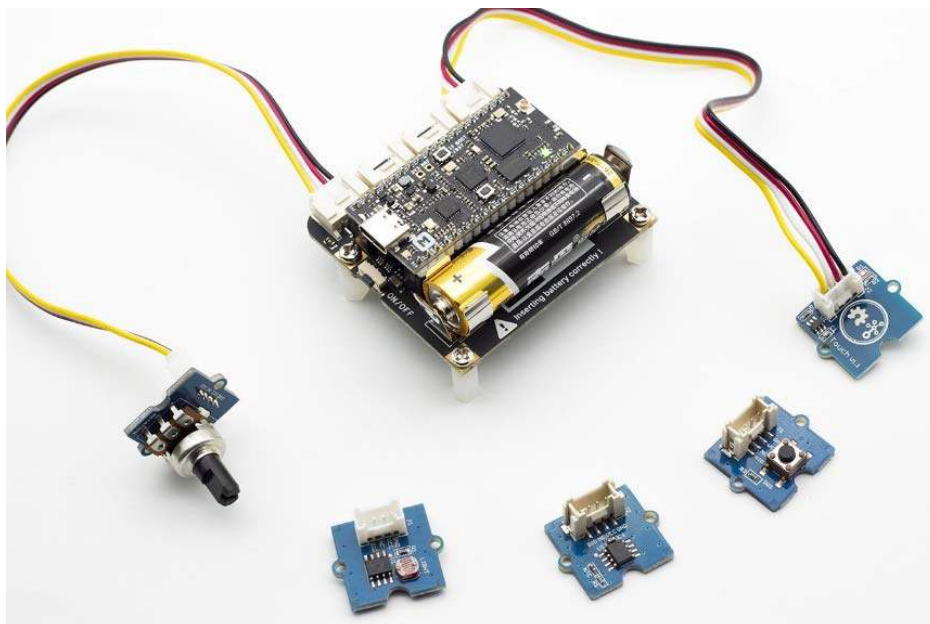
nRF52840 MDK Base Dock

SKU 103020213

The Base Dock is an essential tool allowing you to build rapidly Internet of Things applications. It is an ideal add-on to the existing nRF52832-MDK and nRF52840-MDK development boards.

The Base Dock can be powered by only one AA battery, and it also features a power button and a PCB NFC antenna. It is also Grove compatible, which means you can connect easily and quickly sensors with the 4 Grove connectors.

For more about Grove, please visit [Seeed Studio Grove page](#).



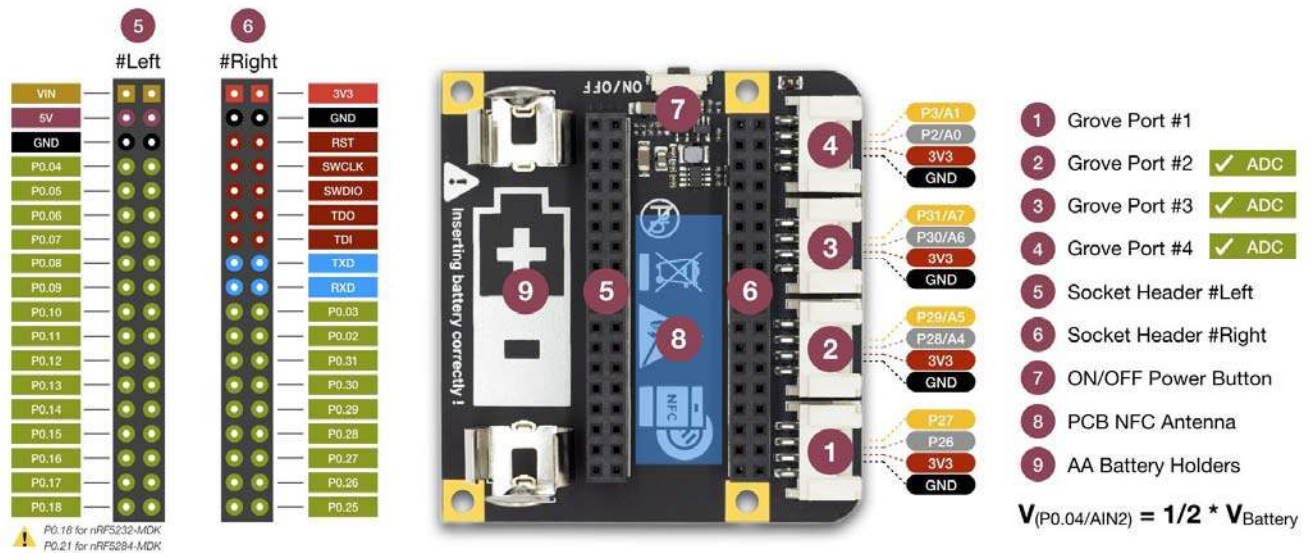
FEATURES

- Work with nRF52832-MDK and nRF52840-MDK development boards
- Low-cost and convenient for Mesh Networking applications
- Grove compatible with hundreds of Grove modules supported
- NFC tag-A PCB Antenna available
- AA Battery power supply with step-up converter integrated
- Power Button with Latching Circuit
- Battery level sensing

HARDWARE SPECIFICATIONS

- Dual 2x18 Socket Headers compatible with nRF52832-MDK & nRF52840-MDK
- 4 Grove connectors with UART/I2C/I2S/PDM/QDEC/SPI/ADC selectable
- NFC tag-A PCB Antenna available
- One Power Button with Latching Circuit
- AA Battery Holders
- Synchronous, Step-up Converter with VIN>VOUT Down Mode Operation
- 0.8V-to-4V Input Range
- 3.3V Output with Over-Current Protection
- Battery level sensing with 1:2 voltage divider on AIN2
- Low power consumption: 5uA Shutdown Current; 145uA Idle Current
- Measures 2.28" x 2.14" x 0.67" (58mm x 54mm x 17mm)

BLOCK DIAGRAM



Part List

Base Dock Board	1
Screw M3	4
Plastic Spacer M3	4

ECCN/HTS

ECCN	ERA99
HSCODE	8517709000
USHSCODE	85177000
UPC	

