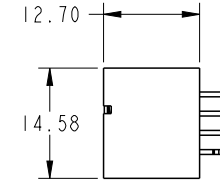
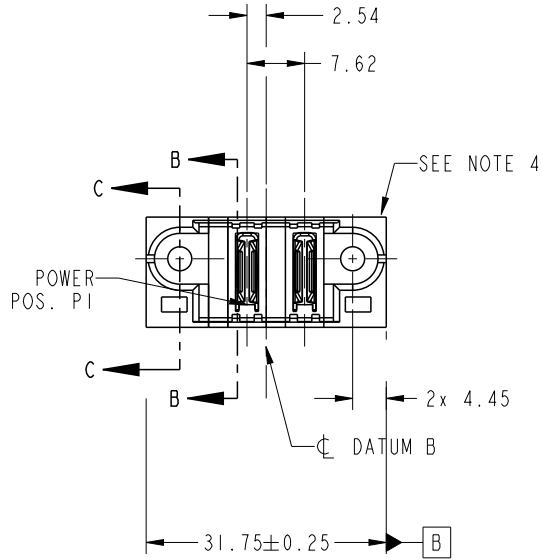


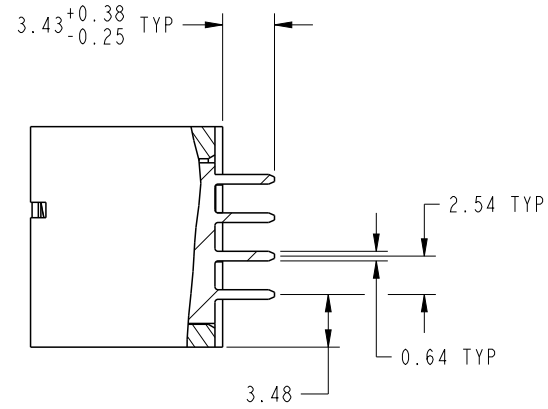
PRODUCT NO. 51952-320LF	POWER			
	E1	P1	P2	E2



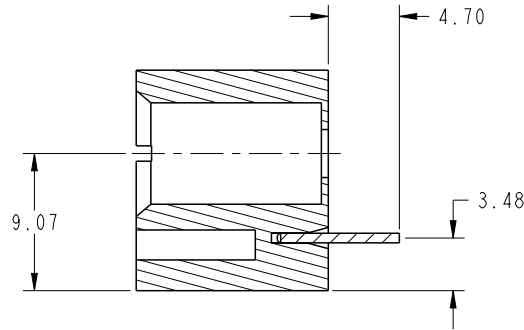
CODE	DIM "M" MATING LENGTH	CONTACT TYPE
PA	[N/A]	POWER
HA	[N/A]	HOLD-DOWN

spec ref	See Notes			dr	Ruan MT	2016/07/29	projection 	MM ←→	size	A4	scale	1:1
tolerance std	TOLERANCES UNLESS OTHERWISE SPECIFIED			eng	Ruan MT	2016/08/04			ecn no	-	rel level	Released
See Notes				chr	Fancy Zhang	2016/08/03						
surface	linear	0.X	±0.50	appr	Pei-Ming Zheng	2016/08/04	product family	PwrBlade	rev	A		
		0.XX	±0.25	Amphenol FCi			part no	2ACP	dwg no 51952-320			
		0.XXX	±0.10				cat. no.	-			Product - Customer Drw	sheet 1 of 4
	angular	0°	±2°				Product - Customer Drw		sheet 1 of 4			

PRODUCT NUMBER
51952-320LF



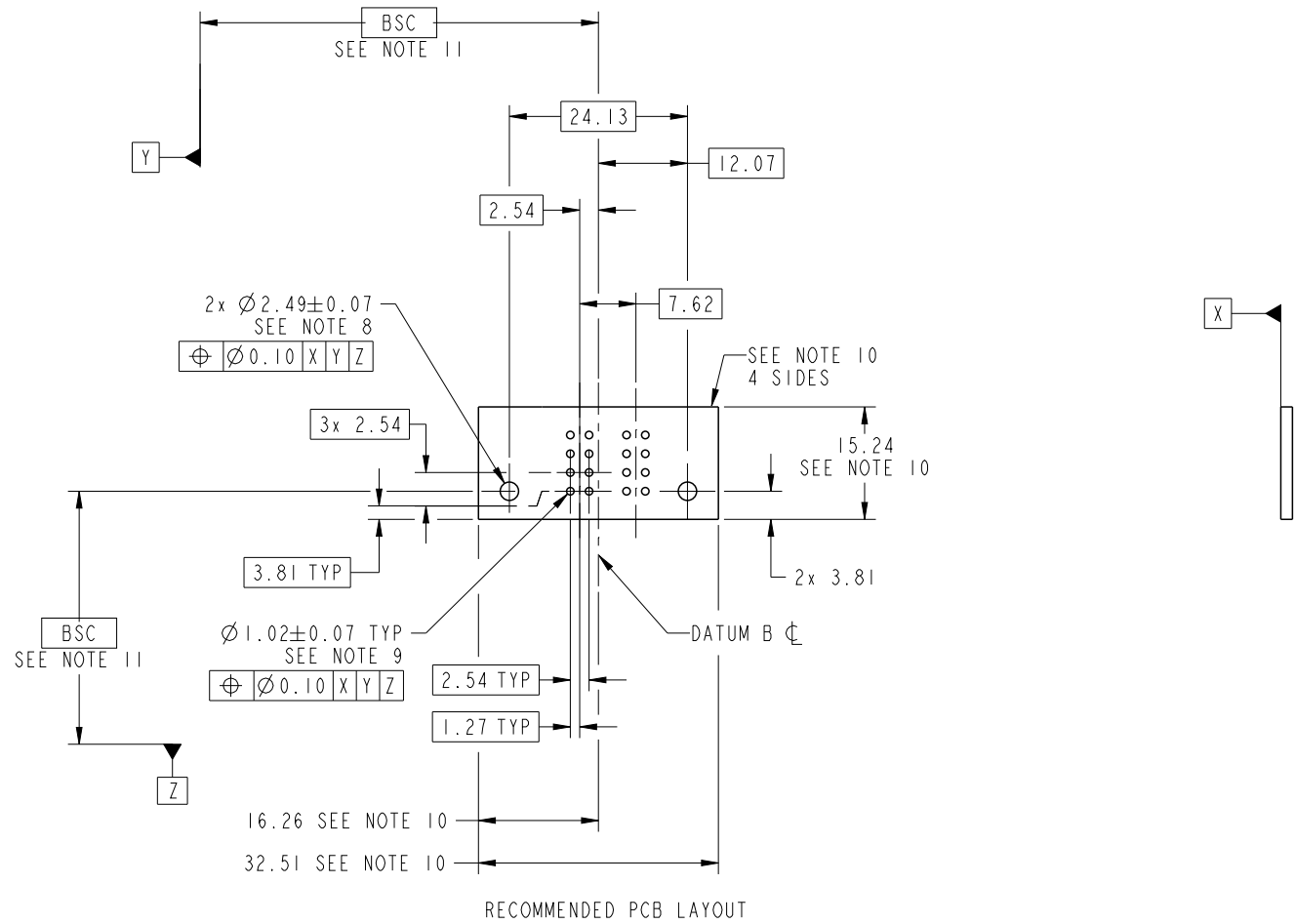
SECTION B-B
SCALE 2:1



SECTION C-C
SCALE 2:1

spec ref		See Notes		dr	Ruan MT	2016/07/29	projection 	MM ←→	size	A4	scale	1:1					
tolerance std		TOLERANCES UNLESS OTHERWISE SPECIFIED		eng	Ruan MT	2016/08/04			ecn no	-							
See Notes				chr	Fancy Zhang	2016/08/03				rel level		Released					
surface		linear	0.X ±0.50	appr	Pei-Ming Zheng	2016/08/04	product family		PwrBlade								
			0.XX ±0.25	Amphenol FCi		title		2ACP		dwg no		51952-320		rev		A	
			0.XXX ±0.10														
		angular	0° ±2°														

PRODUCT NUMBER
51952-320LF



RECOMMENDED PCB LAYOUT

spec ref		See Notes		dr	Ruan MT	2016/07/29	projection 	MM 	size	A4	scale	1:1
tolerance std		TOLERANCES UNLESS OTHERWISE SPECIFIED		eng	Ruan MT	2016/08/04			ecn no	-	rel level	Released
See Notes				chr	Fancy Zhang	2016/08/03						
surface				appr	Pei-Ming Zheng	2016/08/04	product family		PwrBlade			
linear	0.X	±0.50		Amphenol FCi	part no		2ACP		dwg no	51952-320		rev A
	0.XX	±0.25			VERTICAL SOLDER HEADER							
	0.XXX	±0.10			cat. no.		-					
angular	0°	±2°		Product - Customer Drw		sheet 3 of 4						

Creo File - REV E - 2016-02-12

PRODUCT NUMBER

51952-320LF

NOTES:

1. DIMENSIONS AND TOLERANCES ARE IN ACCORDANCE WITH ASME Y14.5M, 1994 UNLESS OTHERWISE SPECIFIED.

CONNECTOR NOTES:

- ② HOUSING MATERIAL: UL 94 V-0 GLASS FILLED HIGH-TEMP THERMOPLASTIC
POWER CONTACT MATERIAL: COPPER ALLOY
SIGNAL PIN MATERIAL: COPPER ALLOY
 - 3. SEE FCI PLATING SPEC10064183.
 - ④ MANUFACTURER'S NAME, DATE CODE AND OPTIONAL P/N TO APPEAR ON THIS SURFACE. THE MARK CAN BE OMITTED IF THERE IS NOT ENOUGH SPACE ON THIS SURFACE.
 - 5. PRODUCT SPECIFICATION GS-12-149.
APPLICATION SPECIFICATION BUS-20-067.
 - 6. PACKAGED IN TRAYS.
- PCB NOTES:
- 7. ALL HOLE DIAMETERS ARE FINISHED HOLE SIZE.
 - 8. MOUNTING HOLES, WHERE APPLICABLE, ARE UNPLATED.
 - ⑨ $\varnothing 1.151 \pm 0.025$ DRILLED HOLES PLATED WITH
0.008 MIN SnPb OR Sn OVER .001 [0.03]
TO 0.08 Cu PLATING TO ACHIEVE
 $\varnothing 1.02 \pm 0.07$ HOLE.
 - ⑩ CONNECTOR KEEP-OUT ZONE.
 - ⑪ DATUM AND BASIC DIMENSIONS ARE ESTABLISHED BY CUSTOMER.

spec ref		See Notes		dr	Ruan MT	2016/07/29	projection 	MM 	size	A4	scale	1:1	
tolerance std		TOLERANCES UNLESS OTHERWISE SPECIFIED		eng	Ruan MT	2016/08/04			ecn no	-			
See Notes				chr	Fancy Zhang	2016/08/03			product family	PwrBlade		rel level	Released
surface	linear	0.X	± 0.50	Amphenol FCi	title	2ACP VERTICAL SOLDER HEADER		dwg no	51952-320		rev	A	
		0.XX	± 0.25										
		0.XXX	± 0.10										
	angular	0°	$\pm 2^\circ$	cat. no.	-	Product - Customer Drw		sheet 4 of 4					