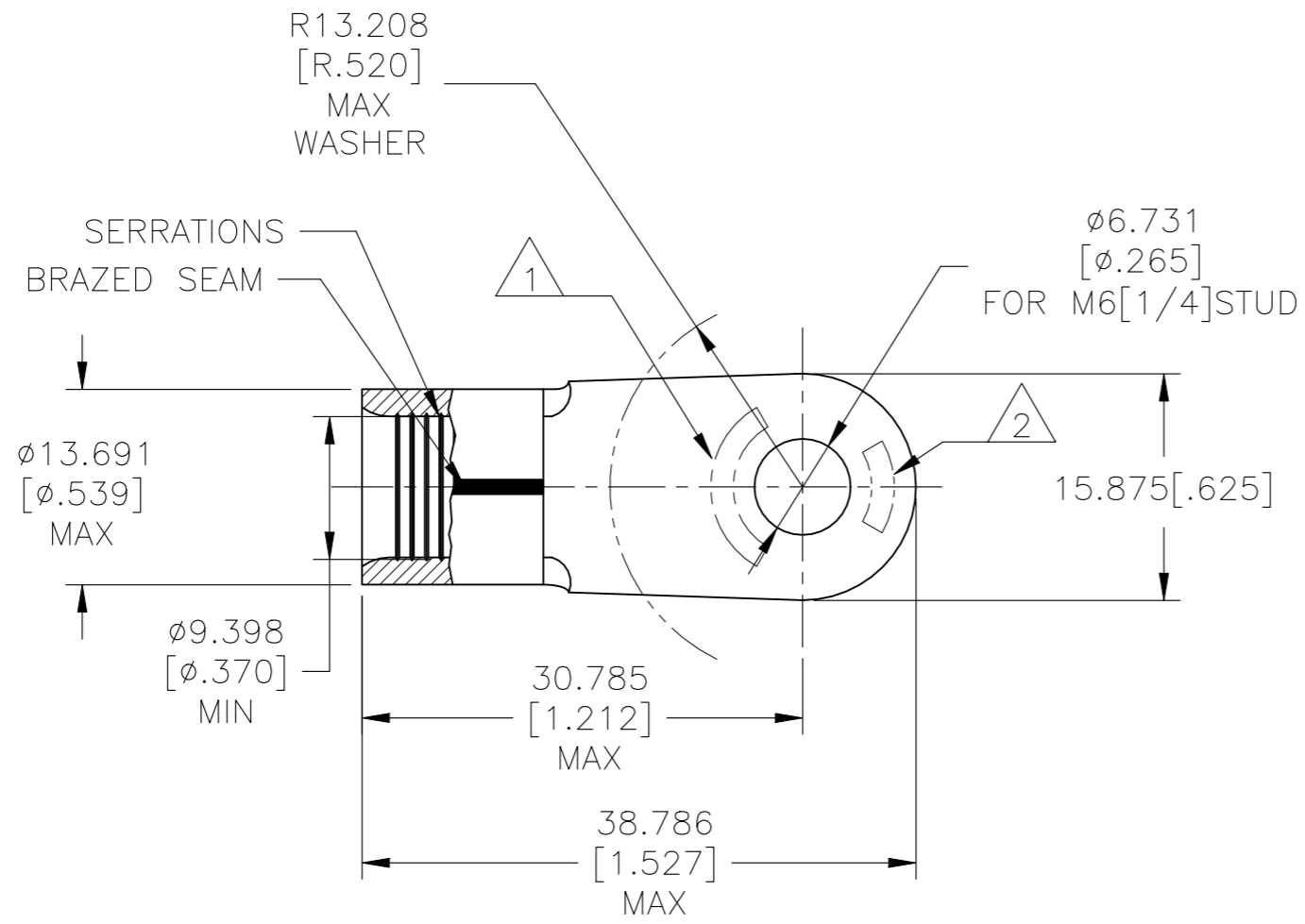


© - TE Connectivity. All Rights Reserved.

REVISIONS

P	LTR	DESCRIPTION	DATE	DWN	APVD
	K1	ECN-22-150900	27APR2022	RK	SCD



AMP
WIRE RANGE

UL E13288
Listed

2 AWG
SOLID OR STRANDED

2 AWG
STRANDED $\triangle 7$

SF LR7189
Certified

2 AWG
SOLID OR STRANDED $\triangle 7$

- $\triangle 1$ STAMP AMP 2W* APPROX AS SHOWN.
- $\triangle 2$ STAMP 60-75 APPROX AS SHOWN.
- 3 MATERIAL THK: 1.778±0.076[.070±.003].
- $\triangle 4$ TIN PLATE 0.00254[.000100] MIN EXT THK PER ASTM B545.
- $\triangle 5$ GOLD PLATE 0.00127[.000050] MIN. EXT. THK. PER MIL-G-45204 OVER NICKEL PLATE 0.00076 [0.000030] MIN. EXT. THK. PER SAE AMS QQ-N-290. OVER CU FLASH PER SAE AMS2418

- $\triangle 8$ NICKEL PLATE 0.00762[.000300] MIN. EXT. THK. PER SAE AMS QQ-N-290.
- $\triangle 9$ PRODUCT SPECIFICATION UL 486A-B
- $\triangle 10$ PRODUCT SPECIFICATION 108-32046, APPLICATION SPECIFICATION 114-2162

QTY.	PACKAGE TYPE	MAX RECOMMENDED TEMPERATURE	FINISH	PART NO
$\triangle 9 \triangle 7$ 25		170°C[338°F] MAX	$\triangle 4$	8-320383-3
$\triangle 10$ 50		343°C[649°F] MAX	$\triangle 8$	2-320383-2
50	LOOSE PIECE	260°C[500°F] MAX	$\triangle 5$	2-320383-1
$\triangle 9 \triangle 7$ 50		170°C[338°F] MAX	$\triangle 4$	320383-1
$\triangle 9 \triangle 7$ 50		170°C[338°F] MAX	$\triangle 4$	320383

AMP INCORPORATED
CUSTOMER SERVICE SYSTEMS

FOR ADDITIONAL PRODUCT INFORMATION OR COPIES OF DRAWINGS AND TECHNICAL DOCUMENTS
PRODUCT INFORMATION CENTER
1-800-522-6752

FOR APPLICATION TOOLING INFORMATION
TOOLING ASSISTANCE CENTER
1-800-722-1111

FOR ORDER ENTRY
1-800-526-5142

MAX RECOMMENDED OPERATING TEMPERATURE:
SEE TABLE

VOLTAGE RATING:
NOT APPLICABLE

WIRE CROSS SECTIONAL AREA RANGE:
26.7-42.4mm²[52,600-83,700] CIR MILS
SOLID OR STRANDED

THIS DRAWING IS A CONTROLLED DOCUMENT.

DIMENSIONS:
mm [INCHES]

TOLERANCES UNLESS OTHERWISE SPECIFIED:

0 PLC ± -
1 PLC ± -
2 PLC ± -
3 PLC ± 0.127[.005]
4 PLC ± -
ANGLES ± -

MATERIAL
COPPER PER ASTM B152 ANNEALED

FINISH
SEE TABLE

DWN DK SCHRUM 5/24/93
CHK RD HEIM 1/27/94
APVD RE ROSER 1/27/94

PRODUCT SPEC $\triangle 9 \triangle 10$

APPLICATION SPEC $\triangle 10$

WEIGHT -

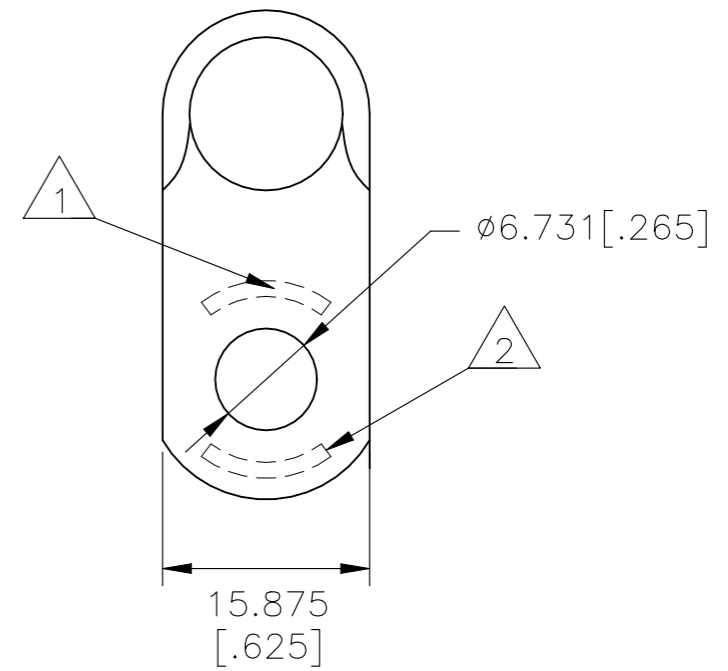
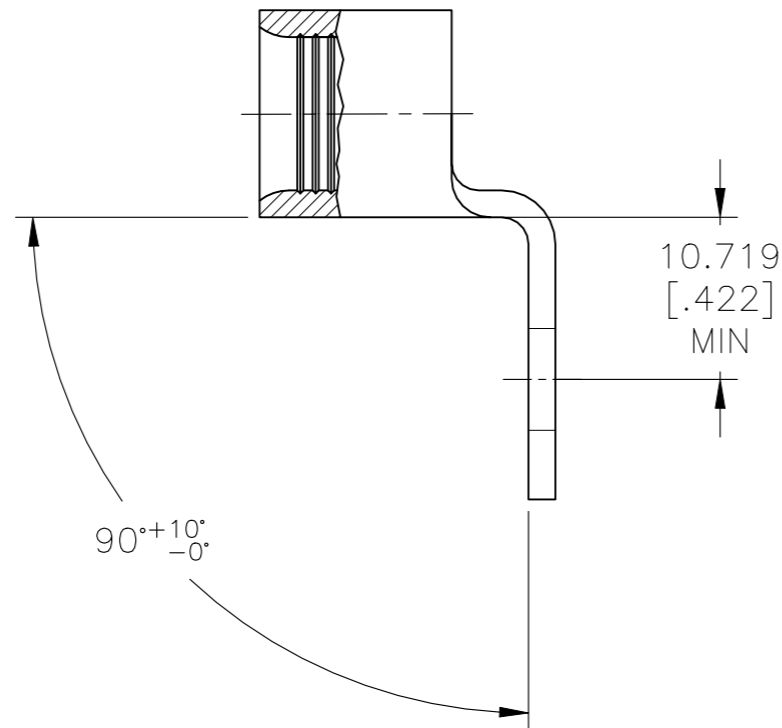
STE TE Connectivity Ltd.

NAME
TERMINAL, RING TONGUE, SOLISTRAND AND STRATO-THERM HR, WIRE SIZE: 2 AWG


SIZE A3 CAGE CODE - DRAWING NO C-320383 RESTRICTED TO -

CUSTOMER DRAWING SCALE 2:1 SHEET 1 OF 2 REV K1

REVISIONS					
P	LTR	DESCRIPTION	DATE	DWN	APVD
-	-	SEE SHEET 1	-	-	-



320383-1 ONLY

THIS DRAWING IS A CONTROLLED DOCUMENT.		DWN DK SCHRUM 5/24/93	 TE Connectivity Ltd.														
DIMENSIONS: mm [INCHES]		CHK RD HEIM 1/27/94															
TOLERANCES UNLESS OTHERWISE SPECIFIED:		APVD RE ROSER 1/27/94	NAME TERMINAL, RING TONGUE, SOLISTRAND AND STRATO-THERM HR, WIRE SIZE: 2 AWG														
<table border="0"> <tr><td>0 PLC</td><td>± -</td></tr> <tr><td>1 PLC</td><td>± -</td></tr> <tr><td>2 PLC</td><td>± -</td></tr> <tr><td>3 PLC</td><td>± 0.127[.005]</td></tr> <tr><td>4 PLC</td><td>± -</td></tr> <tr><td>ANGLES</td><td>± -</td></tr> </table>		0 PLC	± -	1 PLC	± -	2 PLC	± -	3 PLC	± 0.127[.005]	4 PLC	± -	ANGLES	± -	PRODUCT SPEC -	APPLICATION SPEC -		
0 PLC	± -																
1 PLC	± -																
2 PLC	± -																
3 PLC	± 0.127[.005]																
4 PLC	± -																
ANGLES	± -																
MATERIAL COPPER PER ASTM B-152		FINISH SEE TABLE	WEIGHT -	SIZE A3	CAGE CODE -	DRAWING NO C-320383	RESTRICTED TO -										
CUSTOMER DRAWING			SCALE 2:1	SHEET 2 OF 2	REV K1												