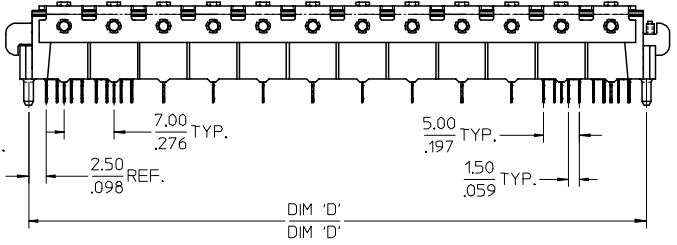
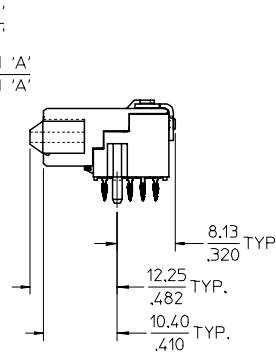
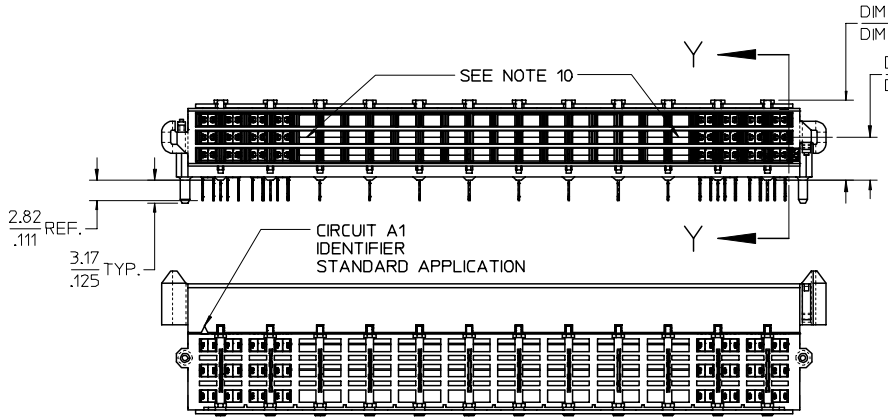
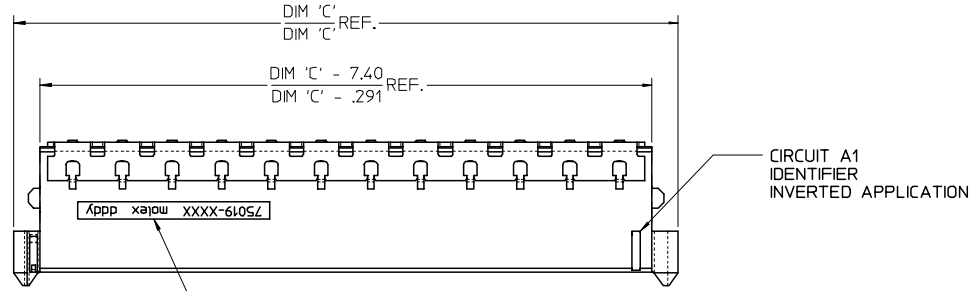


- NOTES:
- MATERIALS:**
HOUSING - LIQUID CRYSTAL POLYMER, UL94 V-0
WAFER DIELECTRIC - LIQUID CRYSTAL POLYMER, UL94 V-0
CONTACT - COPPER ALLOY
 - FINISHES**
CONTACT INTERFACE
0.76 MICRON MIN. SELECT GOLD OVER
1.27 MICRON MIN. NICKEL OVERALL
COMPLIANT INTERFACE
0.76 MICRON MIN. SELECT TIN OVER
1.27 MICRON MIN. NICKEL OVERALL
HOUSING
0.10 MICRON MAX. IMMERSION GOLD OVER
3.81 MICRON MIN. NICKEL OVER
3.81 MICRON MIN. COPPER OVERALL
 - PRODUCT SPECIFICATION**
THIS PART CONFORMS TO MOLEX SPECIFICATION PS-75018-001.
 - PACKAGING SPECIFICATION**
THIS PART TO BE PACKAGED PER SPECIFICATION PK-75020-010.
 - APPLICATION SPECIFICATION**
THIS PART TO BE APPLIED PER SPECIFICATION AS-75018-001.
APPLICATION TOOL AND INSTRUCTIONS PER AS-75018-001.
 - MATING INFORMATION**
THIS PART MATES WITH 75018-XXXX & 75140-XXXX.
WILL MATE WITH MAXIMUM OF 1.27mm MIS-ALIGNMENT
WILL MATE WITH MAXIMUM 0.5° MIS-ALIGNMENT
 - ORIENTATION**
THIS PART CAN BE USED IN A STANDARD OR INVERTED ORIENTATION (I.E. ROTATED 180°)
 - SEE SHEET 3 FOR PCB LAYOUT INFORMATION
 - SEE SHEET 4 FOR CIRCUIT DESIGNATION
 - CIRCUITS IN THIS ZONE HAVE BEEN OMITTED TO SIMPLIFY THE MODEL. ACTUAL PRODUCT IS FULLY LOADED WITH TERMINALS
 - APPLICATION TOOLING KEEP OUT AREA.
NO COMPONENTS ALLOWED IN THIS AREA.
 - CONFORMS TO MOLEX COSMETIC SPECIFICATION PS-75005-001.
 - MARKING: PART NUMBER, MOLEX LOGO, DATE CODE
 - RECOMMENDED DRILL SIZE 0.66±0.03 TO YIELD FINISHED PLATED THROUGH HOLE 0.55±0.05



EC NO: UCP2004-1631 DRAWN: KLANG 2004/04/27 CHKD: 2004/04/28 APPR: MBANAKIS/2004/04/29	QUALITY SYMBOLS ▽ - 0 ◻ - 0	GENERAL TOLERANCES (UNLESS SPECIFIED)		SCALE 2:1	DESIGN UNITS METRIC	THIRD ANGLE PROJECTION	REVISE ON CAD ONLY
		DIMENSION STYLE MM/IN	TITLE HIGH SPEED DOCKING FLOATING CONNECTOR	MOLEX INCORPORATED		SHEET NO. 1 OF 4	
A1	DRAFT WHERE APPLICABLE MUST REMAIN WITHIN DIMENSIONS	DRAWN BY LANG DATE 02-NOV-25	CHECKED BY LANG DATE 02-NOV-26	APPROVED BY BANAKIS DATE 02-NOV-26	MATERIAL NO. SEE SHEET 2	DOCUMENT NO. SD-75019-010	THIS DRAWING CONTAINS INFORMATION THAT IS PROPRIETARY TO MOLEX INCORPORATED AND SHOULD NOT BE USED WITHOUT WRITTEN PERMISSION

J
I
H
G
F
E
D
C
B
A

ITEM NUMBER	CIRCUIT SIZE	NO. OF COLUMNS 'N'	CENTERLINE DIMENSION 'A' mm(in)	O/A HEIGHT DIMENSION 'B' mm(in)	O/A LENGTH DIMENSION 'C' mm(in)	PEG TO PEG DIMENSION 'D' mm(in)	FIRST-LAST DIMENSION 'E' mm(in)
75019-0015	144	48	4.74 (.187)	9.98 (.393)	93.50 (3.681)	87.00 (3.425)	82.00 (3.228)
75019-0016	144	48	6.09 (.240)	11.33 (.446)	93.50 (3.681)	87.00 (3.425)	82.00 (3.228)
NOT TOOLED	132	44	4.74 (.187)	9.98 (.393)	86.50 (3.406)	80.00 (3.150)	75.00 (2.953)
75019-0014	120	40	4.74 (.187)	9.98 (.393)	79.50 (3.130)	73.00 (2.874)	68.00 (2.677)
75019-0013	108	36	4.74 (.187)	9.98 (.393)	72.50 (2.854)	66.00 (2.598)	61.00 (2.402)
NOT TOOLED	96	32	4.74 (.187)	9.98 (.393)	65.50 (2.579)	59.00 (2.323)	54.00 (2.126)
NOT TOOLED	84	28	4.74 (.187)	9.98 (.393)	58.50 (2.303)	52.00 (2.047)	47.00 (1.850)
NOT TOOLED	72	24	4.74 (.187)	9.98 (.393)	51.50 (2.028)	45.00 (1.772)	40.00 (1.575)
NOT TOOLED	60	20	4.74 (.187)	9.98 (.393)	44.50 (1.752)	38.00 (1.496)	33.00 (1.299)
NOT TOOLED	48	16	4.74 (.187)	9.98 (.393)	37.50 (1.476)	31.00 (1.220)	26.00 (1.024)
NOT TOOLED	36	12	4.74 (.187)	9.98 (.393)	30.50 (1.201)	24.00 (.945)	19.00 (.748)
75019-0017	108	36	6.09 (.240)	11.33 (.446)	72.50 (2.854)	66.00 (2.598)	61.00 (2.402)
75019-0018	120	40	4.74 (.187)	9.98 (.393)	79.50 (3.130)	73.00 (2.874)	68.00 (2.677)

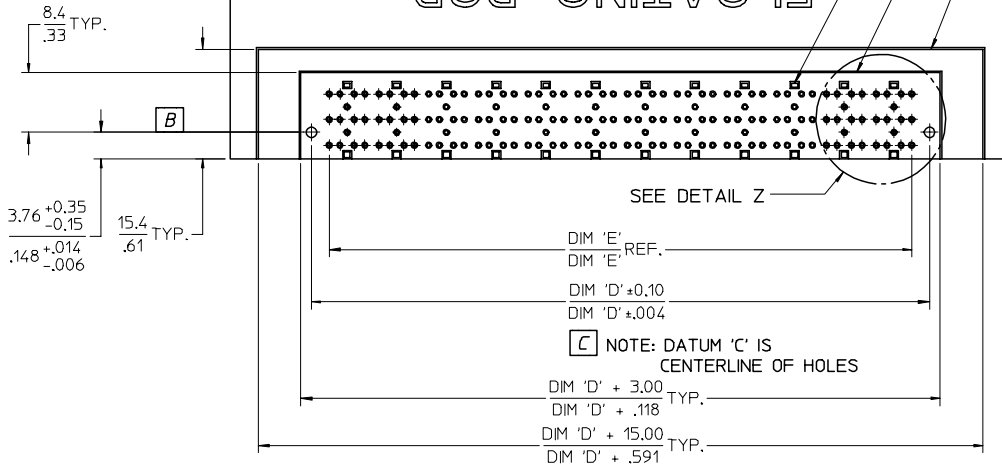
J
I
H
G
F
E
D
C
B
A

EC NO: UCP2004-1631 DRWN: KLANG 2004/04/27 CHKD: 2004/04/28 APPR: MBANAKIS/2004/04/29	QUALITY SYMBOLS ▽ - 0 ◻ - 0	GENERAL TOLERANCES (UNLESS SPECIFIED)		SCALE 1:1	DESIGN UNITS METRIC	THIRD ANGLE PROJECTION	REVISE ON CAD ONLY	
				DIMENSION STYLE		TITLE		
				MM/IN		HIGH SPEED DOCKING FLOATING CONNECTOR		
				DRAWN BY DATE		LANG 02-NOV-25		
		CHECKED BY DATE		LANG 02-NOV-26				
		ANGULAR ±1/2°		APPROVED BY DATE		MATERIAL NO. DOCUMENT NO.		
		DRAFT WHERE APPLICABLE		BANAKIS 02-NOV-26		SEE CHART SD-75019-010		
		MUST REMAIN WITHIN DIMENSIONS		THIS DRAWING CONTAINS INFORMATION THAT IS PROPRIETARY TO MOLEX INCORPORATED AND SHOULD NOT BE USED WITHOUT WRITTEN PERMISSION		SHEET NO. 2 OF 4		

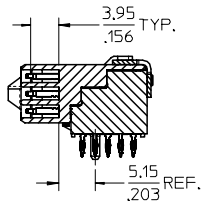
J
I
H
G
F
E
D
C
B
A

J
I
H
G
F
E
D
C
B
A

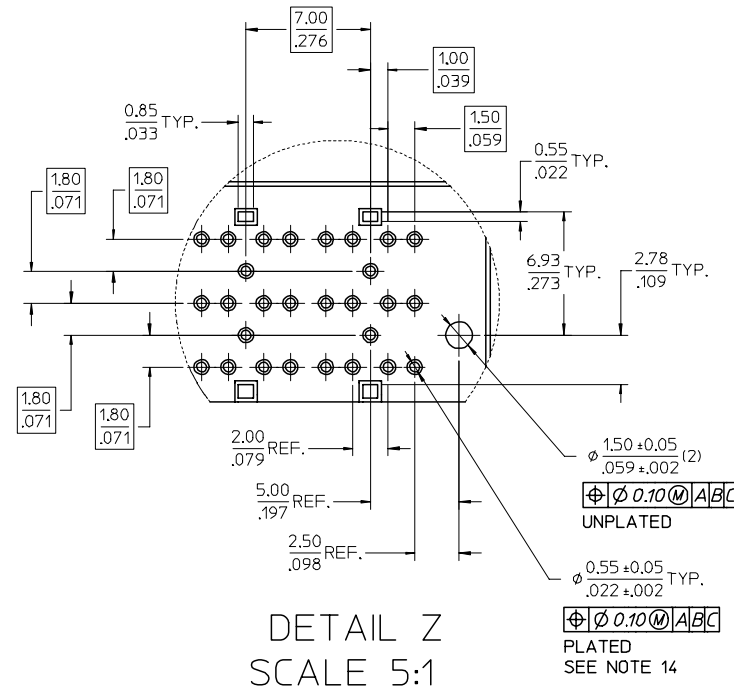
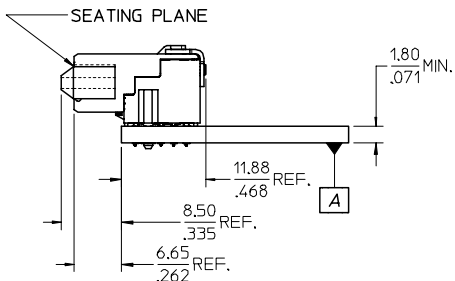
CONNECTOR SIDE OF PCB
FLOATING PCB



NO EXPOSED TRACES ON SURFACE OF PCB IN CONNECTOR STAND OFF LOCATIONS
CONNECTOR KEEP OUT AREA
APPLICATION TOOLING KEEP OUT AREA (NOTES 5 & 11)



SECTION Y-Y

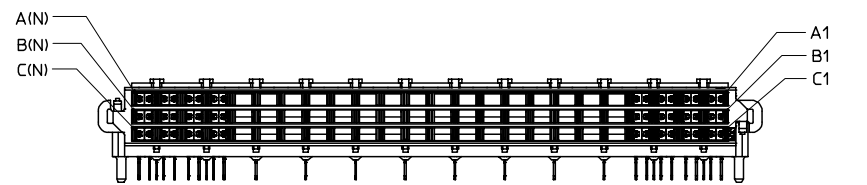
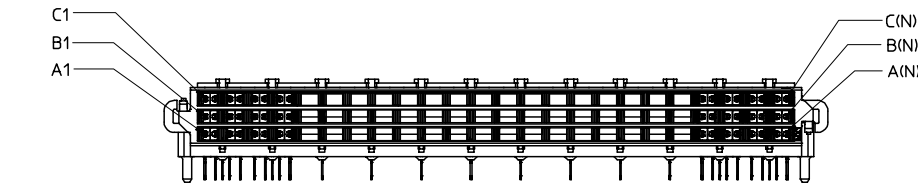
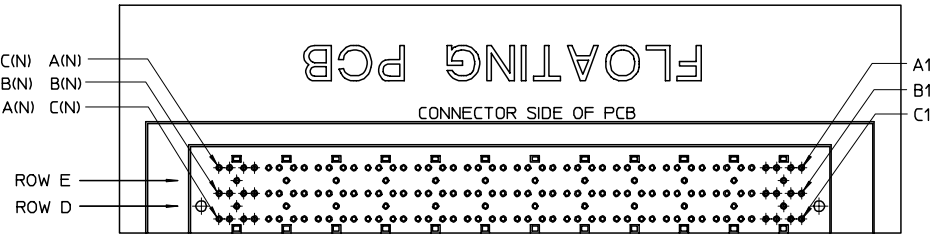
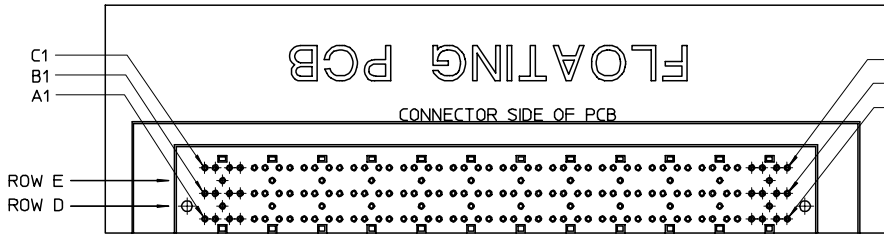
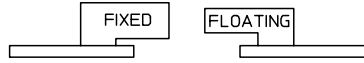


DETAIL Z
SCALE 5:1

EC NO: UCP2004-1631 DRWN: KLANG 2004/04/27 CHKD: 2004/04/28 APPR: MBANAKIS2004/04/29	QUALITY SYMBOLS	GENERAL TOLERANCES (UNLESS SPECIFIED)		SCALE 2:1	DESIGN UNITS METRIC	THIRD ANGLE PROJECTION	REVISE ON CAD ONLY	
	DESCRIPTION ▽ - 0 ◻ - 0	m/m	INCH	DIMENSION STYLE MM/IN		TITLE		
		4 PLACES ± --- ± ---	3 PLACES ± --- ± .005	DRAWN BY DATE LANG 02-NOV-25		HIGH SPEED DOCKING FLOATING CONNECTOR		
		2 PLACES ± 0.13 ± .01	1 PLACE ± 0.25 ± ---	CHECKED BY DATE LANG 02-NOV-26				
ANGULAR ±1/2°	DRAFT WHERE APPLICABLE MUST REMAIN WITHIN DIMENSIONS		APPROVED BY DATE BANAKIS 02-NOV-26	MATERIAL NO. SEE SHEET 2	DOCUMENT NO. SD-75019-010	SHEET NO. 3 OF 4		
A1	THIS DRAWING CONTAINS INFORMATION THAT IS PROPRIETARY TO MOLEX INCORPORATED AND SHOULD NOT BE USED WITHOUT WRITTEN PERMISSION						C	

STANDARD APPLICATION
CIRCUIT DESIGNATIONS

INVERTED APPLICATION
CIRCUIT DESIGNATIONS



CIRCUIT DESIGNATION

FIRST MATE: HOUSING - SIGNAL GROUND
 SECOND MATE: A1, C1, A(N), C(N) (FOR POWER RETURN)
 THIRD MATE: A2, B2, C2, A(N-1), B(N-1), C(N-1) & ALL OTHERS
 (A2, C2, A(N-1) & C(N-1) FOR POWER)
 (ALL OTHERS FOR SIGNAL)
 LAST MATE: B1, B(N) (FOR CARD DETECT)

ALL COLUMNS FROM 3 THROUGH (N-2) ARE SUITABLE FOR
 DIFFERENTIAL PAIRS
 EG: A3-A4, B3-B4, C3-C4, A(N-2)-A(N-3), B(N-2)-B(N-3)

SIGNAL GROUND: ROWS D & E

EC NO: UCP2004-1631 DRWN: KLANG 2004/04/27 CHKD: 2004/04/28 APPR: MBANAKIS/2004/04/29	QUALITY SYMBOLS ▽ - 0 ◻ - 0	GENERAL TOLERANCES (UNLESS SPECIFIED)		SCALE 2:1	DESIGN UNITS METRIC	THIRD ANGLE PROJECTION	REVISE ON CAD ONLY	
				DIMENSION STYLE MM/IN		TITLE		
		4 PLACES ± --- ± ---	3 PLACES ± --- ± .005	DRAWN BY LANG	DATE 02-NOV-25	HIGH SPEED DOCKING FLOATING CONNECTOR		
		2 PLACES ± 0.13 ± .01	1 PLACE ± 0.25 ± ---	CHECKED BY LANG	DATE 02-NOV-26			
ANGULAR ±1/2°		DRAFT WHERE APPLICABLE MUST REMAIN WITHIN DIMENSIONS		APPROVED BY BANAKIS	DATE 02-NOV-26	MATERIAL NO. SEE SHEET 2	DOCUMENT NO. SD-75019-010	
A1	REV			THIS DRAWING CONTAINS INFORMATION THAT IS PROPRIETARY TO MOLEX INCORPORATED AND SHOULD NOT BE USED WITHOUT WRITTEN PERMISSION		SHEET NO. 4 OF 4		