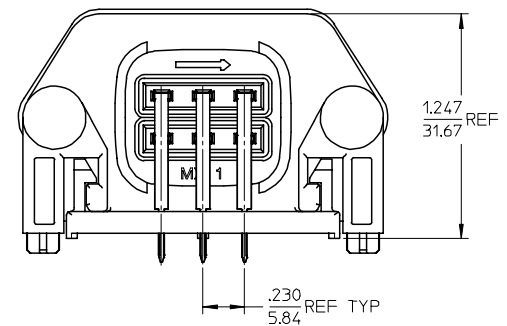
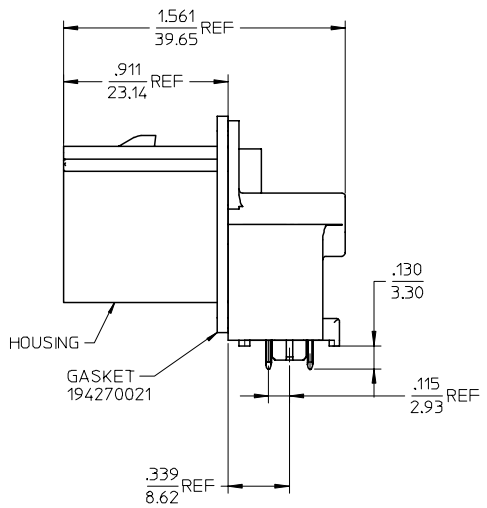
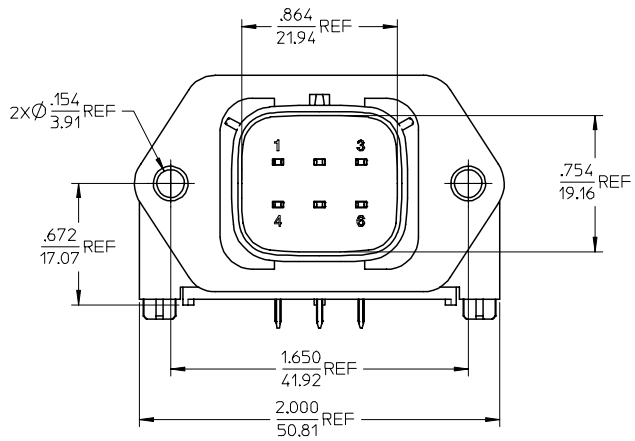
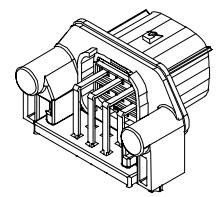
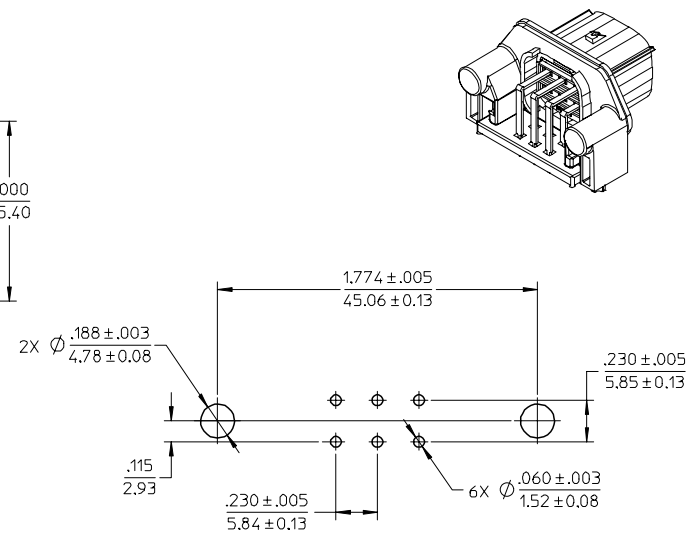
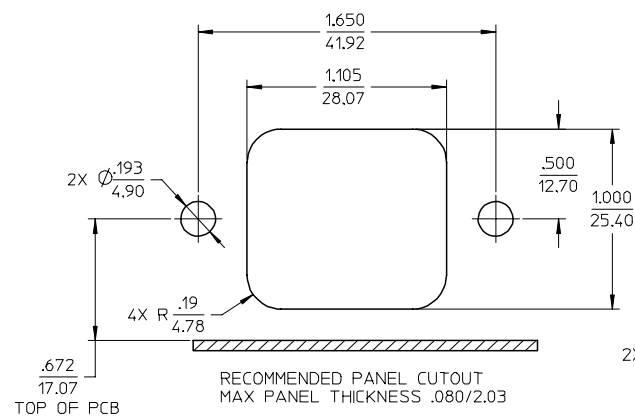
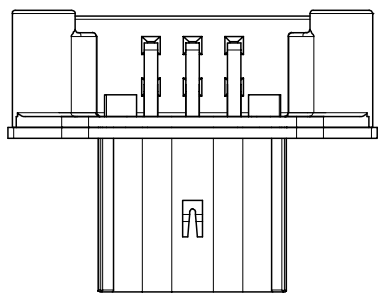


13 12 11 10 9 8 7 6 5 4 3 2 1

J
I
H
G
F
E
D
C
B
A



NOTES:

- MATERIALS:
HOUSING: POLYESTER (PBT), GLASS FILLED, UL94 V-0, COLOR: BLACK
TERMINALS: COPPER ALLOY
- FINISHES: 1. TIN ONLY: 100µM TIN OVER 50µM NICKEL
2. TIN/GOLD: 30µM SELECT GOLD (CONTACT MATING AREA), 100µM SELECT TIN (PCB TAIL AREA) OVER 50µM NICKEL OVERALL.
- PRODUCT SPECIFICATION: PS-19427-001.
- PACKAGING SPECIFICATION: PK-19427-001.
- MATES WITH: 19418 SERIES RECEPTACLE ASSEMBLIES.
- RECOMMENDED MOUNTING HARDWARE: (2) #10 X .62/18.9 LONG PLASTIC THREAD CUTTING SCREWS. RECOMMENDED TORQUE 15-17 IN-LBS. SUGGESTED SOURCE: ITW SHAKEPROOF INDUSTRIAL BOSSCREW OR EQUIVALENT.

MATERIAL NO.	PLATING
194270018	TIN
194270106	SELECT GOLD/TIN

REVISED	DESCRIPTION
FC NO: ETC2006-0028	
DRWN: JPWL CK	
CHKD: JPWL CK	
APPR: RDEROSS	

QUALITY SYMBOLS	
	$\nabla=0$
	$\nabla=0$

GENERAL TOLERANCES (UNLESS SPECIFIED)	
	mm
4 PLACES	± .15
3 PLACES	± .10
2 PLACES	± .08
1 PLACE	± .05
ANGULAR ±1/2°	

DRAWN BY	DATE	TITLE
JLOMASTR	04/07/07	6 WAY RIGHT ANGLE HEADER ASSEMBLY
CHECKED BY	DATE	
JPWL CK	04/07/09	
APPROVED BY	DATE	
RDEROSS	04/07/15	
MATERIAL NO.		DOCUMENT NO.
SEE CHART		SD-19427-021
DRAFT WHERE APPLICABLE MUST REMAIN WITHIN DIMENSIONS		SHEET NO. 1 OF 1

MOLEX INCORPORATED

THIS DRAWING CONTAINS INFORMATION THAT IS PROPRIETARY TO MOLEX INCORPORATED AND SHOULD NOT BE USED WITHOUT WRITTEN PERMISSION

12 11 10 9 8 7 6 5 4 3 2 1