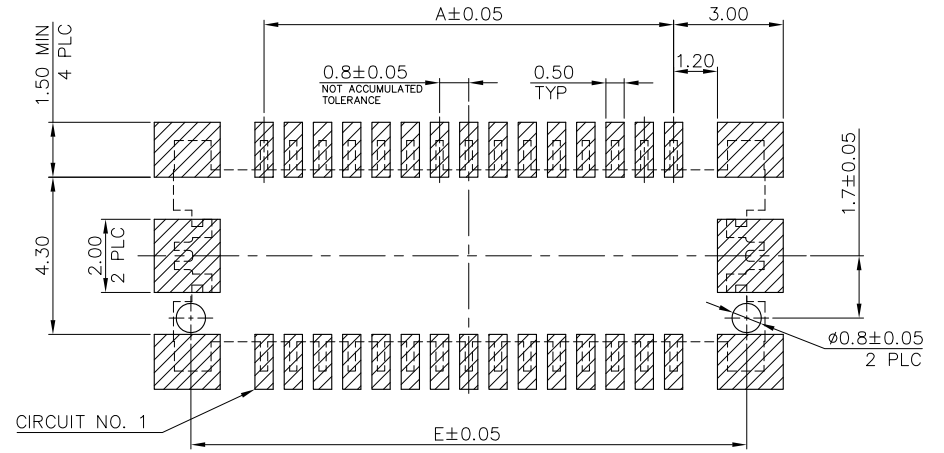
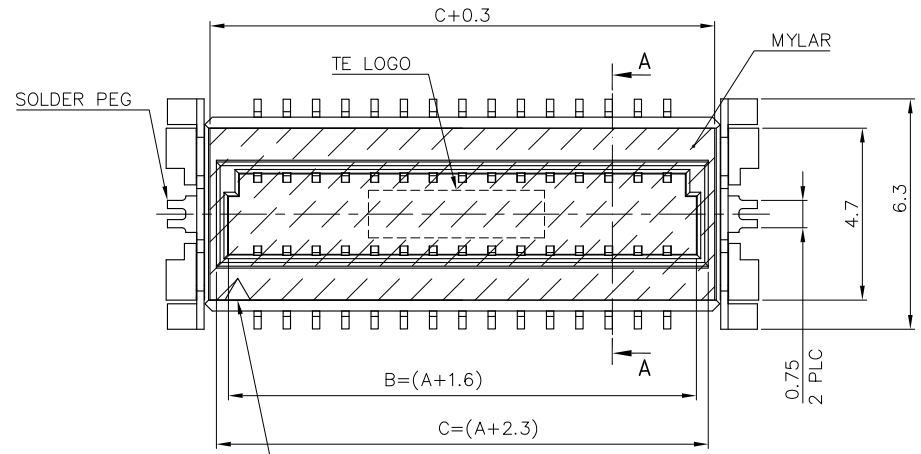


THIS DRAWING IS UNPUBLISHED. RELEASED FOR PUBLICATION
 © COPYRIGHT 2013 BY TE CONNECTIVITY. ALL RIGHTS RESERVED.

LOC		DIST		REVISIONS					
DW		-		P	LTR	DESCRIPTION	DATE	DWN	APVD
				D		ECR-13-006812	23APR13	AW	WK



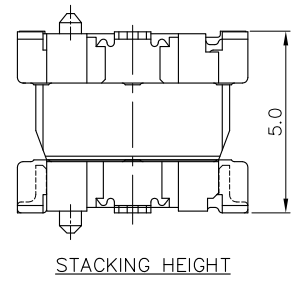
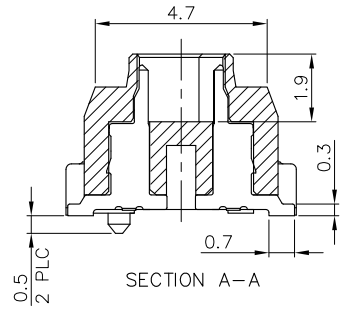
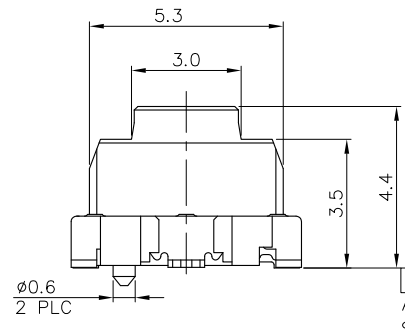
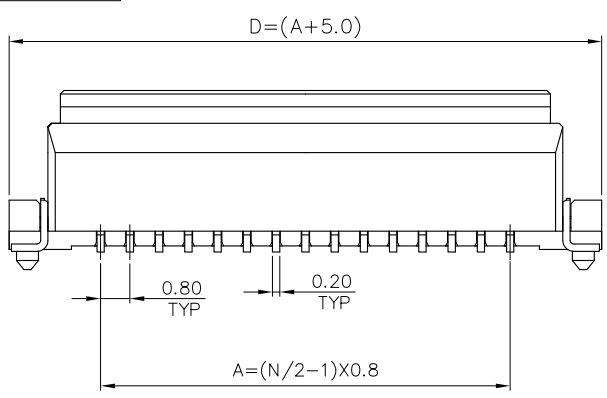
CIRCUIT NO. 1 MARK

CIRCUIT NO. 1

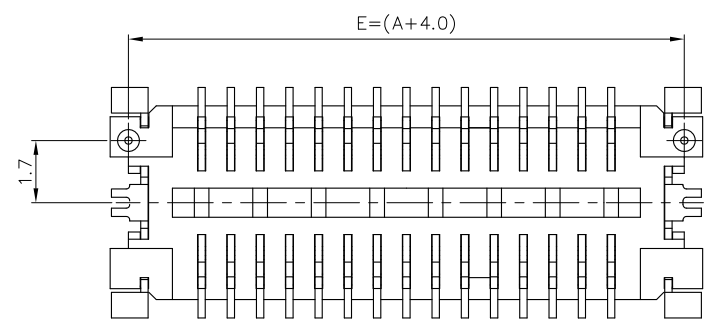
RECOMMENDED PCB LAYOUT

NOTES:

- MATERIAL:
HOUSING: PA6T, UL94 V-0, NATURAL COLOR.
CONTACTS: PHOSPHOR BRONZE.
PEGS: BRASS.
- FINISH:
CONTACTS: (SEE TABLE)
PLATING A: 100µ" MIN. MATTE-TIN ON ENTIRE CONTACT.
PLATING B: GOLD FLASH.
(WITH ENTIRE CONTACT UNDERPLATED 50µ" MIN. NICKEL)
PEGS: 100µ" MIN. TIN OR MATTE-TIN OVER 50µ" MIN. NICKEL.
- PART NUMBER OF MATING RECEPTACLE: X-1775013-X
- REFLOW SOLDER CAPABLE TO 260°C AS PER TEC-109-201, CONDITION B.



A	15.2	16.2	13.5	8.8	11.2	30	3-1775015-0
	11.2	12.2	9.5	12.8	7.2	20	2-1775015-0
B	8	9	6.3	5.6	4.0	12	1-1775015-2
	11.2	12.2	9.5	8.8	7.2	20	1775015-5
B	15.2	16.2	13.5	12.8	11.2	30	1775015-3
	8	9	6.3	5.6	4.0	12	1775015-1
CONTACT PLATING	E	D	C	B	A	NO. OF CONTACTS	PART NUMBER



5. SUBSTANCE RESTRICTIONS FOR LOW HALOGEN (BY WEIGHT):
 BROMINE (Br) ≤ 900 PPM (0.09%)
 CHLORINE (Cl) ≤ 900 PPM (0.09%)
 TOTAL CONCENTRATION OF (Cl) + (Br) ≤ 1500 PPM (0.15%)

THIS DRAWING IS A CONTROLLED DOCUMENT.		DWN	A. WU	11JUN2007
DIMENSIONS: MM		CHK	S. HOU	11JUN2007
TOLERANCES UNLESS OTHERWISE SPECIFIED:		APVD	W.J. KE	11JUN2007
0 PLC ± -		PRODUCT SPEC	108-57488	
1 PLC ± 0.2		APPLICATION SPEC	-	
2 PLC ± 0.15		WEIGHT	SEE TABLE	
3 PLC ± -		CUSTOMER DRAWING	-	
4 PLC ± -		SCALE	-	
ANGLES ± -		SHEET	1 OF 2	
MATERIAL	FINISH	REV	D	
SEE NOTE	SEE NOTE			



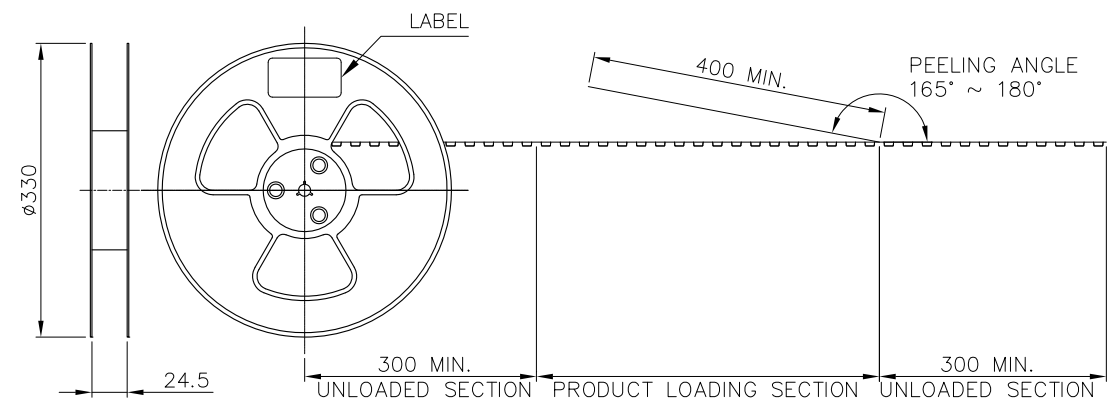
BOARD TO BOARD CONNECTOR,
 0.8mm PITCH, FINE-STACK,
 5H, PLUG

SIZE	CAGE CODE	DRAWING NO	RESTRICTED TO
A3	00779	C=1775015	-

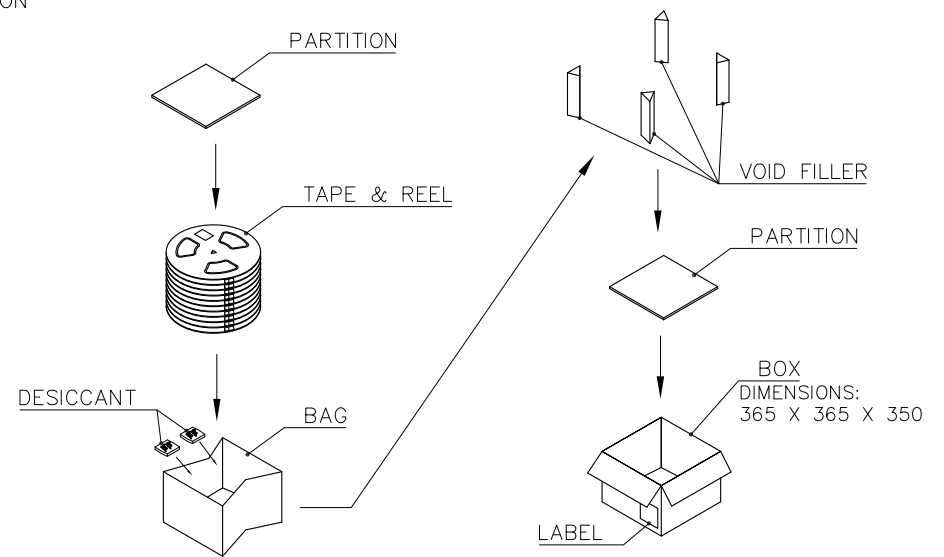
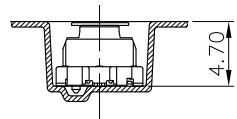
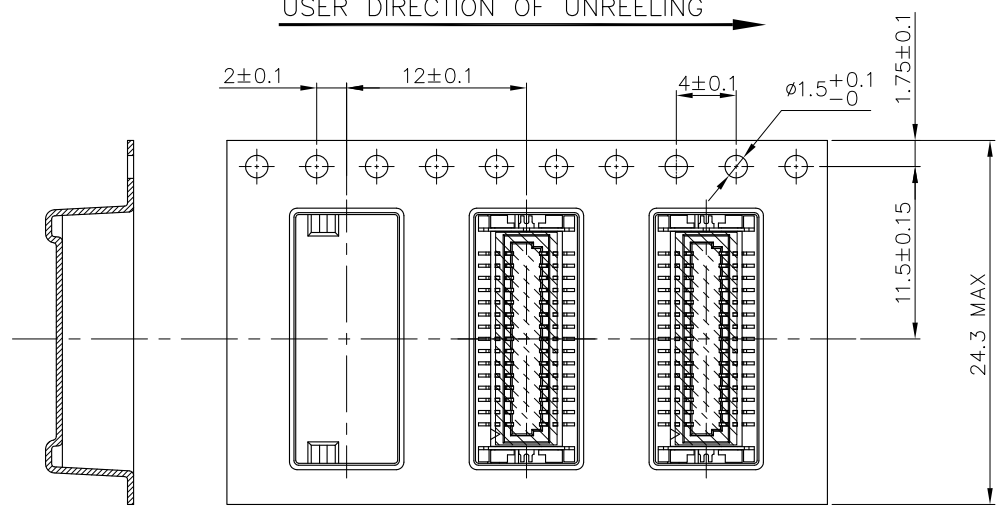
THIS DRAWING IS UNPUBLISHED. RELEASED FOR PUBLICATION
 © COPYRIGHT 2013 BY TE CONNECTIVITY. ALL RIGHTS RESERVED.

LOC	DIST	REVISIONS					
DW	-	P	LTR	DESCRIPTION	DATE	DWN	APVD
				SEE SHEET 1			

- NOTES:
- MATERIAL:
 BOX: FIBREBOARD, CORRUGATED, DOUBLE WALL.
 COVER TAPE: PET, TRANSPARENT COLOR.
 CARRIER TAPE: POLYSTYRENES, TRANSPARENT COLOR.
 REEL: HIPS, BLUE COLOR.
 BAG: POLYETHYLENES, TRANSPARENT COLOR.
 - EACH BAG SHALL BE INCLUDED DESICCANT.
 - PEELING STRENGTH: 0.1 ~ 1.3 N (10 ~ 130 GRAMS).
 - PEELING SPEED: 300 mm/min.



USER DIRECTION OF UNREELING →



8000	800	10	9.42	3.28	30
			10.25	4.55	20
			8.5	2.5	12
PCS /BOX	PCS /REELS	REELS /BOX	GROSS WEIGHT (Kg)	NET WEIGHT (Kg)	NO. OF CONTACTS

THIS DRAWING IS A CONTROLLED DOCUMENT.

DIMENSIONS: MM	TOLERANCES UNLESS OTHERWISE SPECIFIED:	DWN	-	 TE Connectivity BOARD TO BOARD CONNECTOR, 0.8mm PITCH, FINE-STACK, 5H, PLUG
	0 PLC ± -	CHK	-	
	1 PLC + +	APVD	-	
	2 PLC + + +	PRODUCT SPEC	-	
	3 PLC + + +	APPLICATION SPEC	-	NAME
	4 PLC + -	WEIGHT	-	SIZE
	ANGLES ± -			CAGE CODE
MATERIAL	FINISH			DRAWING NO
				RESTRICTED TO
				A3 00779 C=1775015
				CUSTOMER DRAWING
				SCALE
				SHEET 2 of 2
				REV D