

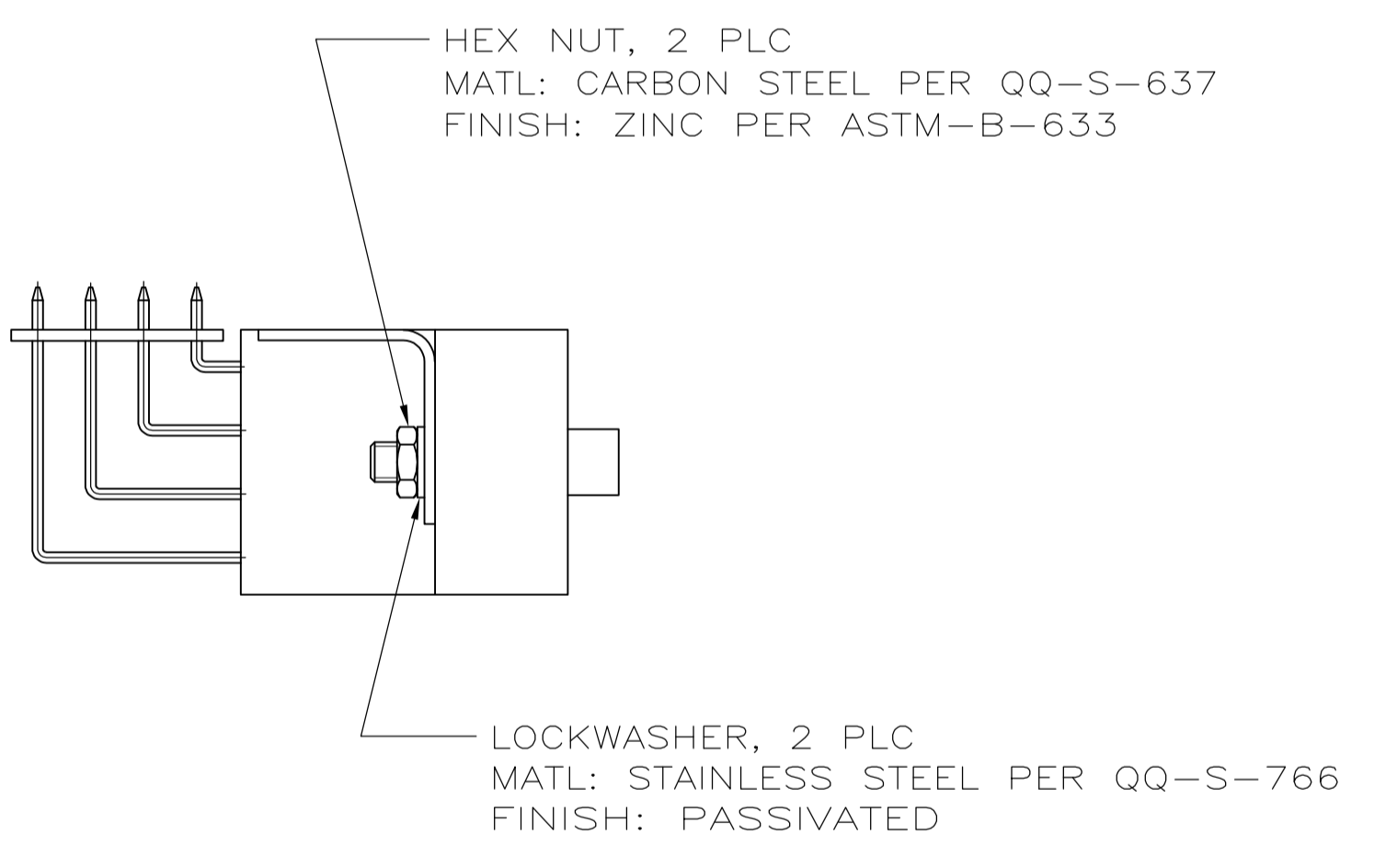
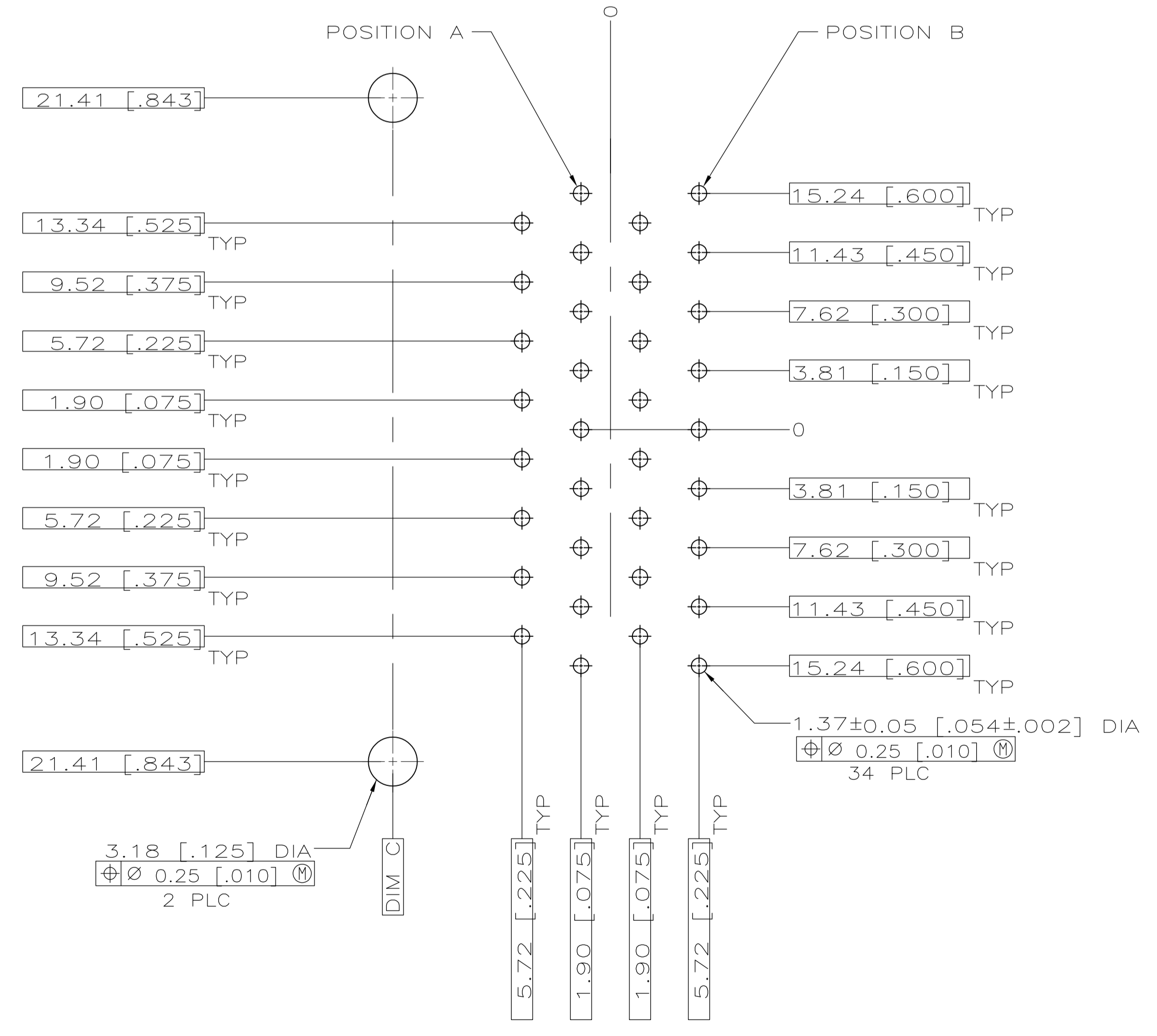
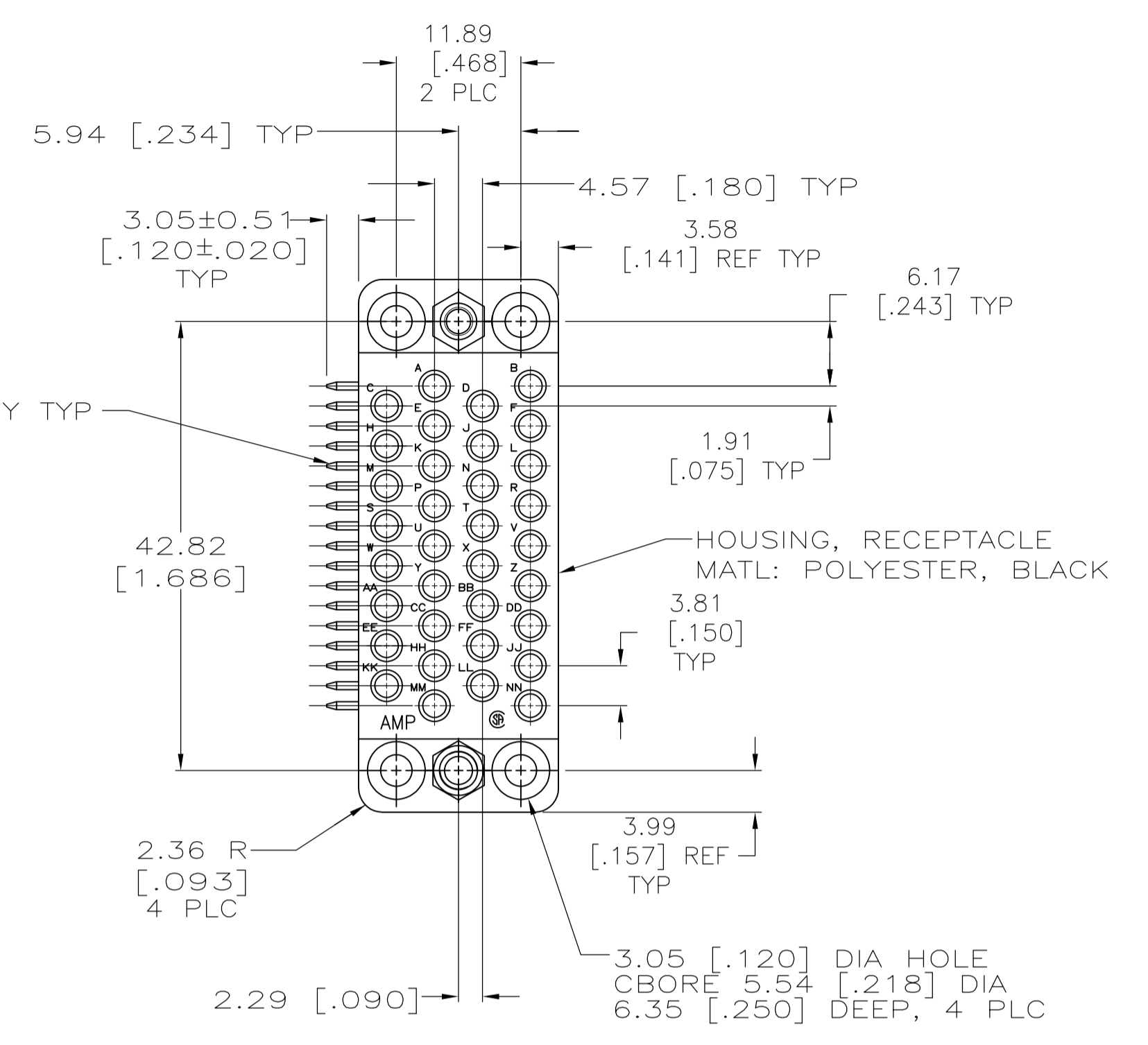
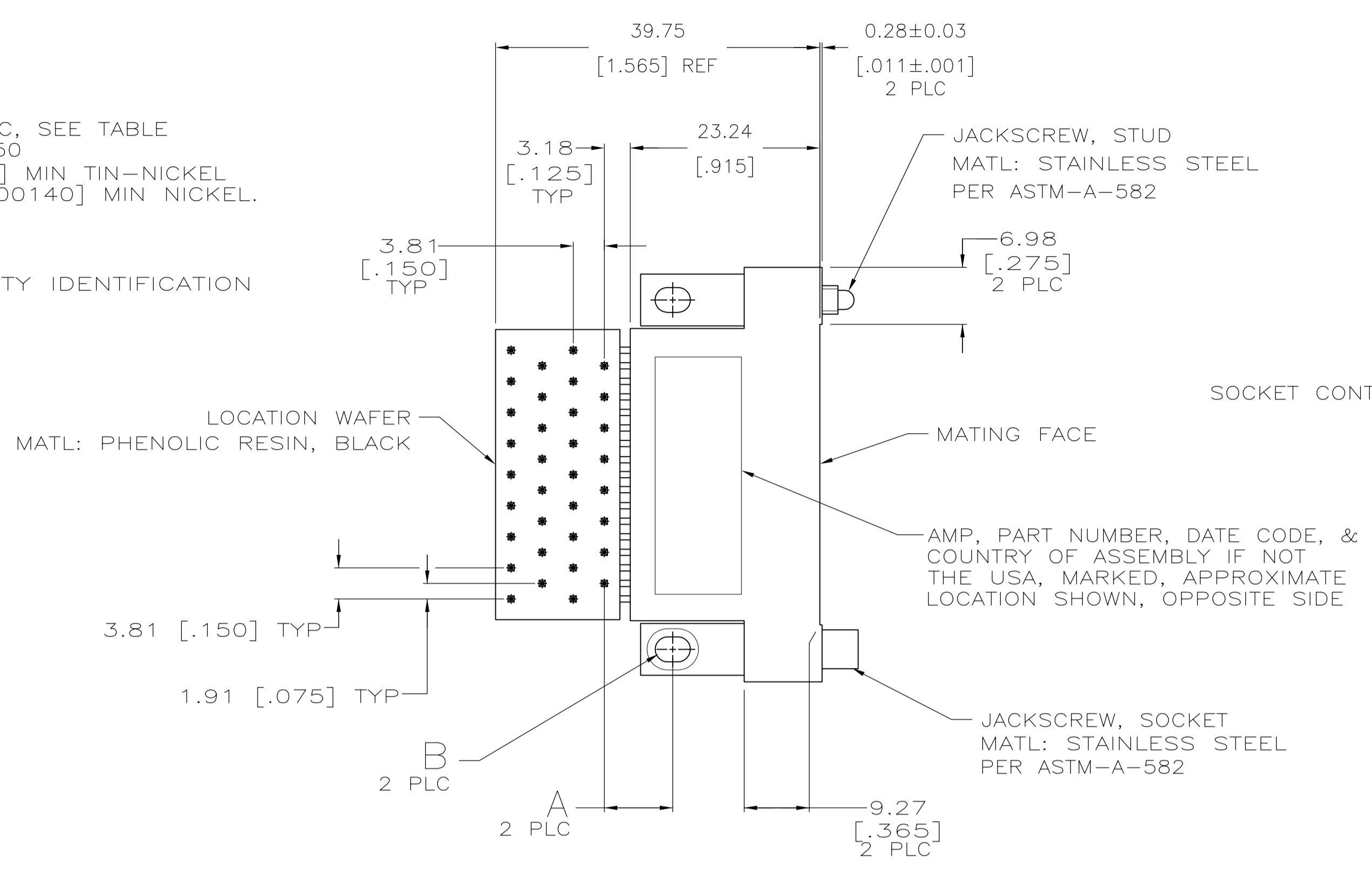
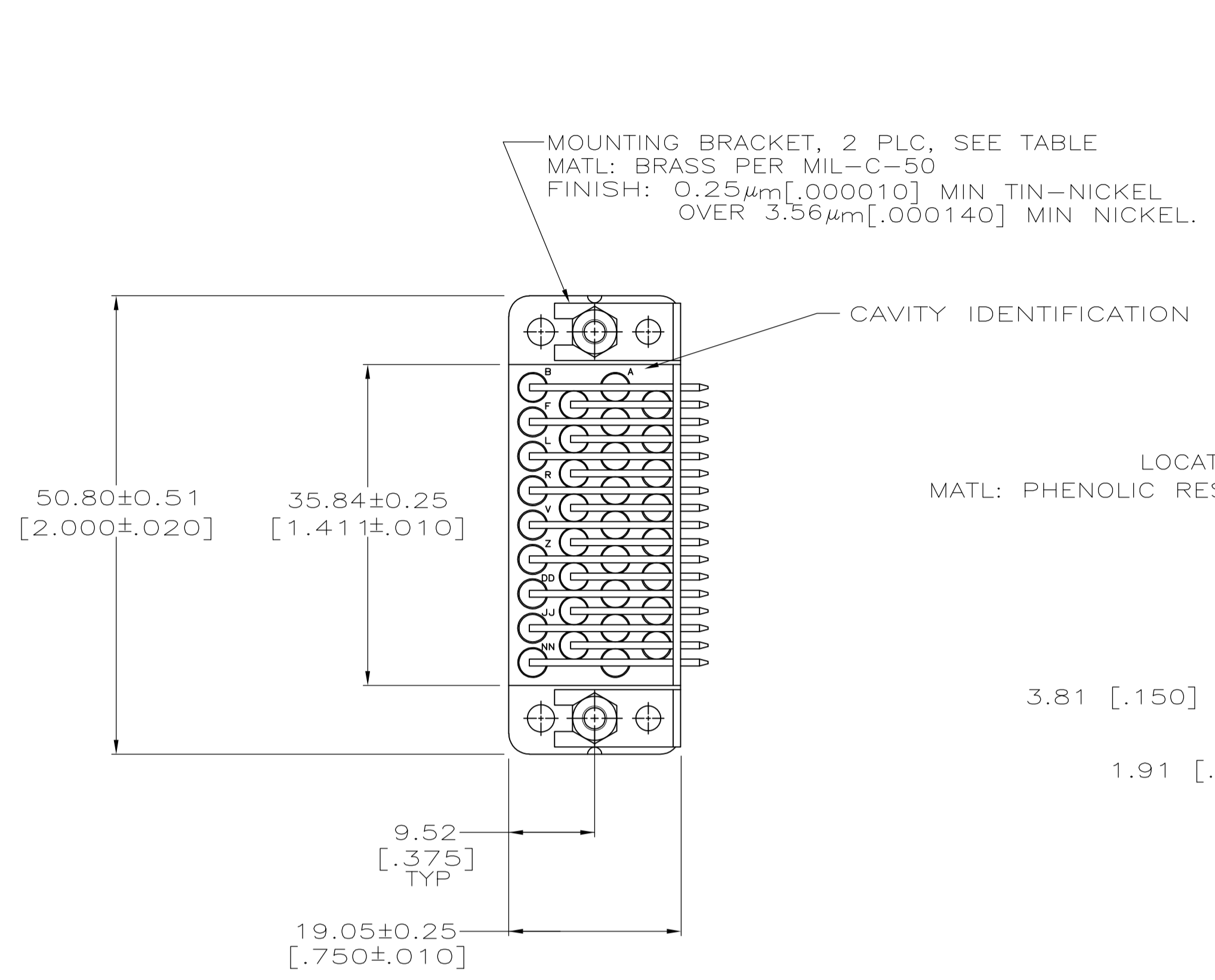
LOC		DIST		REVISIONS			
FT	0	P	LTR	DESCRIPTION	DATE	DN	APVD
		M		REVISED PER ECO-07-024895	10/22/07	SS	GS

- ⚠ SOCKET CONTACT ASSEMBLY:
 BODY MATERIAL: BRASS PER MIL-C-50
 FINISH: 0.76um [.000030] MIN GOLD PER MIL-G-45204 FOR A LENGTH OF 5.08 [.200] MIN FROM MATING END, 2.54um [.000100] MIN TIN-LEAD PER MIL-T-10727, FOR A LENGTH OF 6.35 [.250] MIN FROM OPPOSITE END, BOTH OVER 1.27um [.000050] MIN NICKEL PER QQ-N-290.
 SPRING-MATERIAL: STAINLESS STEEL PER QQ-S-766
 POST-MATERIAL: BRASS PER ASTM-B-134
 FINISH: 2.54um [.000100] MIN TIN-LEAD PER MIL-T-10727 OVER 1.27um [.000050] MIN NICKEL PER QQ-N-290.
- ⚠ SOCKET CONTACT ASSEMBLIES ARE SELECTIVELY LOADED INTO HOUSING AND LOCATION WAFER AT CIRCUITS A, B, C, D, E, F, H, J, L, P, R, S, T, U, V, W, X, Y, AND AA. ALL OTHER COMPONENTS ARE SUPPLIED UNASSEMBLED.
- ⚠ SOCKET CONTACT ASSEMBLIES ARE SELECTIVELY LOADED INTO HOUSING AND LOCATION WAFER AT CIRCUITS A,B,C,D,E,F,H,K,P,R,S,T,U,V,W,X,Y AND AA. NO HARDWARE IS SUPPLIED.
- ⚠ SOCKET CONTACT ASSEMBLIES ARE SELECTIVELY LOADED INTO HOUSING AND LOCATION WAFER AT CIRCUITS A,B,C,D,E,F,H,J,K,P,R,S,T,U,V,W,X,Y,AA AND NN.
- ⚠ SOCKET CONTACT ASSEMBLIES ARE SELECTIVELY LOADED INTO HOUSING AND LOCATION WAFER AT CIRCUITS A,B,C,D,E,F,H,J,K,L,N,P,R,S,T,U,V,W,X,Y,AA AND NN.
- ⚠ SOCKET CONTACT ASSEMBLIES ARE SELECTIVELY LOADED INTO HOUSING AND LOCATION WAFER AT CIRCUITS A,B,C,D,E,F,H,L,M,N,P,R,S,T,U,V,W,X,Y,AA,KK AND NN.
- ⚠ SOCKET CONTACT ASSEMBLY:
 BODY MATERIAL: BRASS PER MIL-C-50
 FINISH: 0.76um [.000030] MIN GOLD PER MIL-G-45204 FOR A LENGTH OF 5.08 [.200] MIN FROM MATING END, 2.54um [.000100] MIN TIN PER MIL-T-10727, FOR A LENGTH OF 6.35 [.250] MIN FROM OPPOSITE END, BOTH OVER 1.27um [.000050] MIN NICKEL PER QQ-N-290.
 SPRING-MATERIAL: STAINLESS STEEL PER QQ-S-766
 POST-MATERIAL: BRASS PER ASTM-B-134
 FINISH: 2.54um [.000100] MIN TIN PER MIL-T-10727 OVER 1.27um [.000050] MIN NICKEL PER QQ-N-290.

⚠	14.10 [.555]	3.05 [.120] X 4.32 [.170] ELONGATED	8.38 [.330]	YES	⚠ 1-213806-7
⚠	14.53 [.572]	#4-40 UNC TAPPED	8.81 [.347]	YES	⚠ 1-213806-6
⚠	15.24 [.600]	#4-40 UNC TAPPED	9.52 [.375]	YES	⚠ 1-213806-5
⚠	14.10 [.555]	3.05 [.120] X 4.32 [.170] ELONGATED	8.38 [.330]	YES	⚠ 1-213806-4
⚠	-	-	-	NO	1-213806-3
⚠	-	-	-	NO	⚠ 1-213806-2
⚠	14.10 [.555]	3.05 [.120] X 4.32 [.170] ELONGATED	8.38 [.330]	YES	⚠ 1-213806-1
⚠	14.10 [.555]	3.05 [.120] X 4.32 [.170] ELONGATED	8.38 [.330]	YES	1-213806-0
⚠	14.10 [.555]	3.05 [.120] X 4.32 [.170] ELONGATED	8.38 [.330]	YES	⚠ 213806-9
⚠	14.53 [.572]	#4-40 UNC TAPPED	8.81 [.347]	YES	⚠ 213806-8
⚠	15.24 [.600]	#4-40 UNC TAPPED	9.52 [.375]	YES	⚠ 213806-7
⚠	14.10 [.555]	3.05 [.120] X 4.32 [.170] ELONGATED	8.38 [.330]	YES	⚠ 213806-6
⚠	-	-	-	NO	213806-4
⚠	-	-	-	NO	⚠ 213806-3
⚠	14.10 [.555]	3.05 [.120] X 4.32 [.170] ELONGATED	8.38 [.330]	YES	⚠ 213806-2
⚠	14.10 [.555]	3.05 [.120] X 4.32 [.170] ELONGATED	8.38 [.330]	YES	213806-1
CONTACT PLATING	C	B	A	MOUNTING BRACKET	PART NUMBER

THIS DRAWING IS A CONTROLLED DOCUMENT.		DIN D. BROCKWAY 08-19-94	Tyco Electronics Corporation Harrisburg, Pa 17105-3608	
DIMENSIONS: mm [INCHES]		CIK R. STONE 08-26-94	Tyco Electronics Corporation	
TOLERANCES UNLESS OTHERWISE SPECIFIED:		APVD -	NAME CONNECTOR ASSEMBLY, SOCKET, 34 POSITION, RIGHT ANGLE, M SERIES	
0 PLC ± -		PRODUCT SPEC -	SIZE A1	
1 PLC ± -		APPLICATION SPEC -	CASE CODE 00779	
2 PLC ± 0.13 [.005]		WEIGHT -	DRAWING NO 213806	
3 PLC ± -		RESTRICTED TO -	SCALE 2:1	
4 PLC ± -		CUSTOMER DRAWING	SHEET 1 OF 2	
ANGLES ± -			REV M	

LOC		DIST		REVISIONS				
P	LTR	DESCRIPTION	DATE	DN	APVD			
-	-	SEE SHEET 1	-	-	-			



RECOMMENDED PC BOARD LAYOUT
 SCALE 4:1

THIS DRAWING IS A CONTROLLED DOCUMENT.		DIN D. BROCKWAY 08-19-94		Tyco Electronics Corporation Harrisburg, Pa 17105-3608	
DIMENSIONS: mm [INCHES]		TOLERANCES UNLESS OTHERWISE SPECIFIED:		NAME	
		0 PLC ± - 1 PLC ± - 2 PLC ± 0.13 [.005] 3 PLC ± - 4 PLC ± - ANGLES ± -		R. STONE	
MATERIAL SEE CALLOUTS		FINISH SEE CALLOUTS		PRODUCT SPEC	
				APPLICATION SPEC	
				SIZE	
				CAGE CODE	
				DRAWING NO	
				RESTRICTED TO	
				A1 00779 C=213806	
				CUSTOMER DRAWING	
				SCALE 2:1	
				SHEET 2 OF 2	
				REV M	