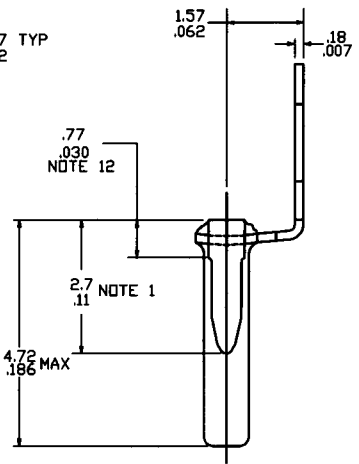
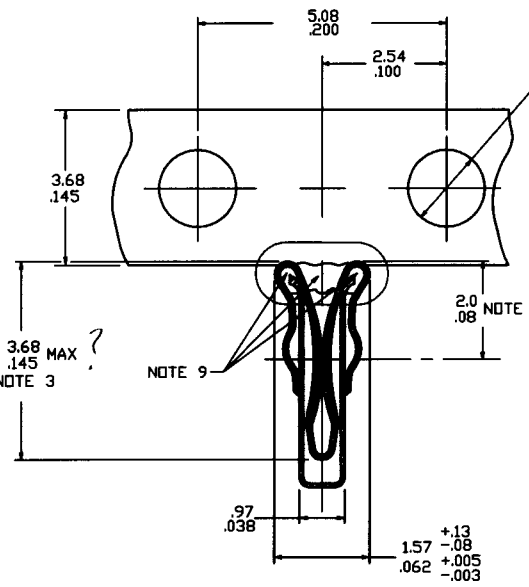
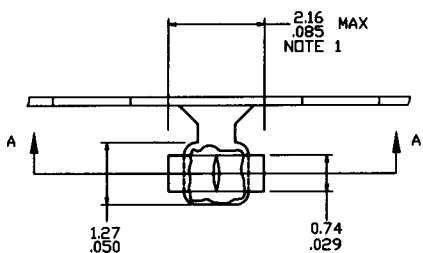


Tous droits strictement réservés. Reproduction ou communication à des tiers interdite sous quelque forme que ce soit sans autorisation écrite du propriétaire. Propriété de c FCI. Droits de reproduction FCI.
 All rights strictly reserved. Reproduction or issue to third parties in any form whatever is not permitted without written authority from the proprietor. Property of FCI. Copyright FCI.

| PRODUCT NUMBER | QTY/ REEL | REMARKS |
|----------------|-----------|---------|
| 75060-012 | 25 M | |
| -013 | 5 M | |
| -016 | 25 M | NOTE 10 |
| 75060-017 | 5 M | NOTE 10 |

NOTES:

- ① DIMENSIONS APPLY PRIOR TO INSTALLATION.
 - ② SHOWS CENTERLINE OF THEORETICAL POINT OF CONTACT FROM TOP OF SPRING.
 - ③ SHOWS MAX DEPTH FOR .51/.020 LEAD FROM TOP OF SPRING.
 - ④ THE SOCKET ASS'Y SHALL BE MACHINE INSERTABLE AND SELF-RETAINING DURING WAVE SOLDERING IN HOLES FROM 1.27/.050 TO 1.47/.058 DIA.
 5. THE SPRING SHALL SOLDER TO THE CUP DURING WAVE SOLDERING IN SINGLE OR DOUBLE SIDED BOARDS TO 1.57/.062 THK. NO SOLDER SHALL ENTER CUP.
 6. THE SOCKET SHALL ACCEPT ROUND LEADS FROM .30/.012 TO .56/.022 DIA AND FLAT LEADS WHEN PROPERLY ORIENTED. FROM .20/.008 TO .39/.015 THK BY .38/.015 TO .58/.023 WIDE.
 7. CUP MATERIAL: GILDING MATERIAL PER MIL C21768. SPRING MATERIAL: BeCu PER CC-C-533
 8. CUP PLATING: TIN-LEAD 60/40 .76μ/30μ' MIN THK
SPRING PLATING: .76μ/30μ' Au(MIL-G-45204B) TYPE IC OVER 1.01μ/40μ' NICKEL(QQ-N-290)
 - ⑨ RTV APPLIED TO AREA SHOWN TO PREVENT FLUX AND SOLDER FROM ENTERING SOCKET DURING WAVE SOLDERING.
 - ⑩ RTV TO BE PLACED IN SPRING LOOPS ONLY.
11. SEE PRODUCT SPECIFICATION NO 12-006 FOR INSERTION/WITHDRAWAL FORCES.
 12. .77/.030 DIM REFERS TO INSTALLED HEIGHT ABOVE BOARD.



SECTION A-A

| | | | | | | |
|-----------------------|----------------|---------------------------------------|---------|---------------|-----------------------------------|------------|
| mat'l. code NOTE 7 | | tolerances unless otherwise specified | | CUSTOMER COPY | Electronics www.fciconnect.com | |
| ltr | ecn no | dr | date | linear | .XX ±.01/.3 | projection |
| J | | RLS | 5/8/87 | | .XXX ±.005/0.13 | |
| K | V90943 | DLH | 4/22/99 | angles | .XXX ±.0020/0.051 | |
| | | | | dr | R. SEIPLE | 5/8/87 |
| | | | | enr | H. SUNDAY | 5/8/87 |
| | | | | chr | H. SUNDAY | 5/8/87 |
| | | | | appd | H. SUNDAY | 5/8/87 |
| sheet index | revision sheet | K | 1 | MM/INCH | scale | 20/1 |
| | | | | | product family | code |
| | | | | | size | dwg no |
| | | | | | A | 75060 |
| | | | | | sheet | 1 of 1 |

ACAD

PDM: Rev:K

STATUS: Released

Printed: Sep 11, 2009

cage code
22526