

6

5

4

3

2


1

MATERIAL AND FINISH:


Insulator: Polycarbonate, UL-94V-0 rated

Contacts: Brass, Tin Plated

ELECTRICAL SPECIFICATIONS:

Current rating: 10 A 

Current rating: 15 A 

Voltage rating: 250 VAC 

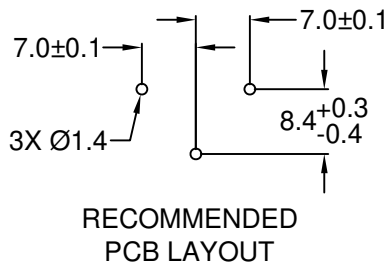
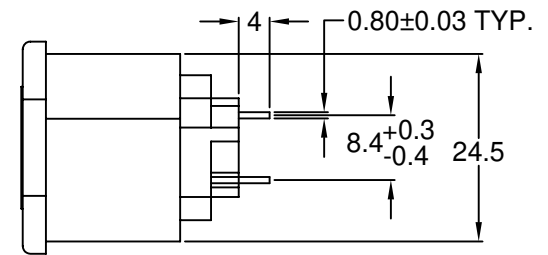
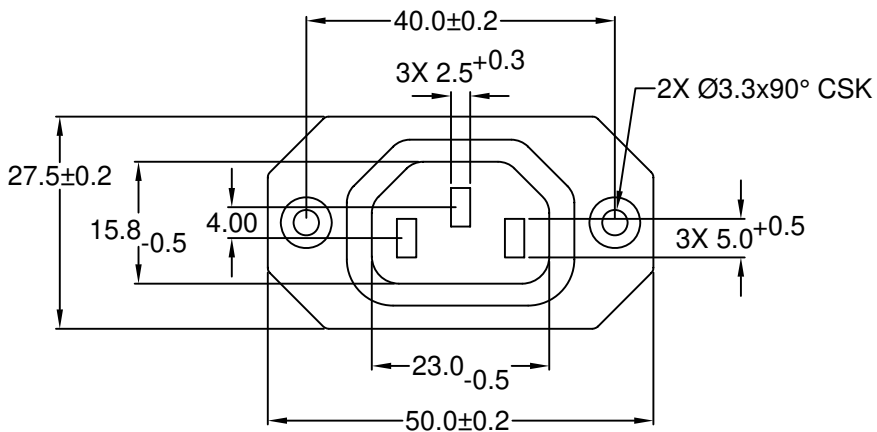
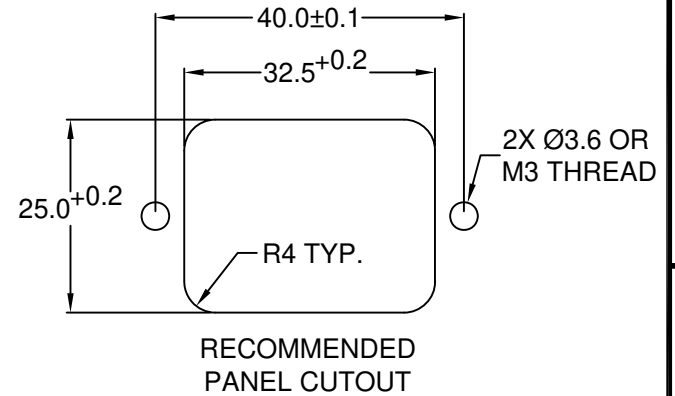
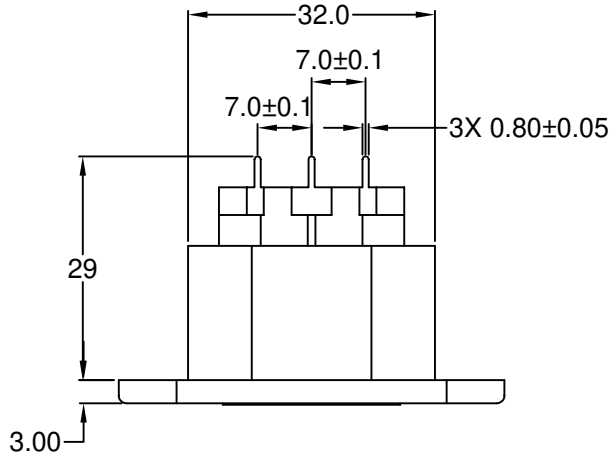
Insulation resistance: 100 Mohm min. at 500 VDC

Dielectric withstanding voltage: 2000 VAC for one minute

ORDERING CODE:

43R09-1 3 2
 1

- 1) COLOR
- 1 = BLACK
- 2 = GRAY



RoHS COMPLIANT

TOLERANCE UNLESS OTHERWISE SPECIFIED	
X	± 1
X.X	± 0.4
X.XX	± 0.20
DRAWN BY	GQ
DATE:	10/09/01
CHECK BY	TD
DATE:	10/11/01
APPR BY	PB
DATE:	10/11/01

Power Dynamics, Inc.
Phone: 973 560-0019 Whippany, New Jersey Fax: 973 560-0076

PART: 10A/15A IEC 60320 APPL. OUTLET; STRAIGHT PC TERMINALS; SIDE FLANGE, PANEL MOUNT

PART #: 43R09-1X32		SHEET 1 of 1
SIZE: A	ALL DIMENSIONS FOR REFERENCE ONLY	
SCALE: NTS	DIMENSIONS ARE IN MILLIMETERS	
REV:		

REV	DATE	CHANGE	CHKG	CHKD	APPR

6

5

4

3

2

1