

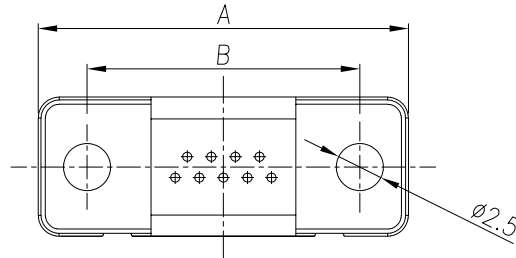
**SPECIFICATIONS:**

**ELECTRICAL:**

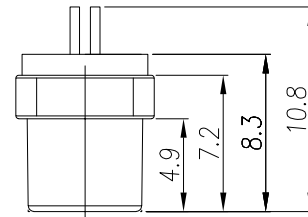
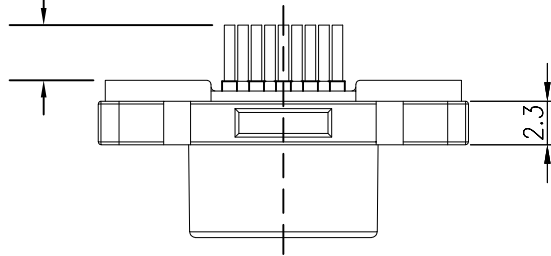
INSULATOR RESISTANCE: 1000 MOHMS MIN.  
 SIGNAL CONTACT RESISTANCE: 45 mOHMS MAX.  
 CONTACT CURRENT RATING: 1 AMP  
 D.W.V.: 500VAC  
 OPERATING TEMPERATURE: -55°C TO 85°C

**MATERIALS:**

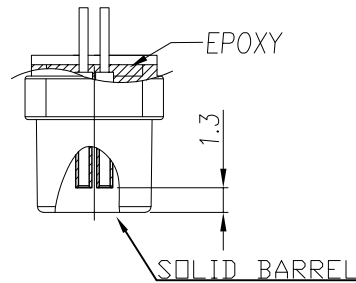
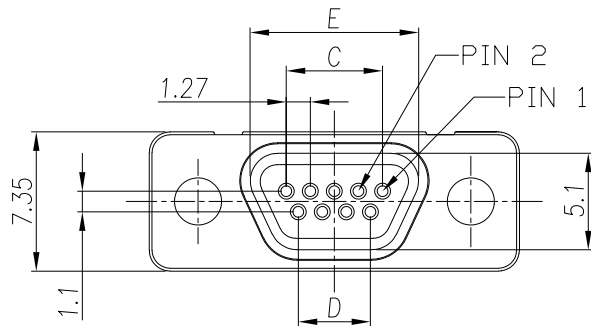
INSULATOR: PBT UL94V-0, BLK  
 230°C MAX PROCESS TEMP  
 SHELL: ZINC ALLOY  
 CONTACTS: 15u" GOLD PLATED BRASS



PCB CONTACT LENGTH  
 SEE PART NUMBER KEY  
 ±0.20mm



DIMENSIONS(mm) ±0.15					
SIZE	A	B	C	D	E
9	19.55	14.35	5.08	3.81	8.90
15	23.36	18.20	8.89	7.62	12.60
25	29.70	24.55	15.24	13.97	19.20



**NOTE:**

**\*\*NOT DESIGNED TO MATE WITH NORCOMP 580-M // 581-M SERIES CONNECTORS. IF ANY QUESTIONS PLEASE CONTACT ENG@NORCOMP.NET**

**380-YYY-21YL001**

SERIES

POSITIONS

009

015

025

PCB CONTACT LENGTH

3 = 2.50mm

A = 4.44mm

**RoHS COMPLIANT**

UNITS = mm

**DO NOT SCALE FROM DRAWING**



THESE DRAWINGS AND SPECIFICATIONS ARE THE PROPERTY OF NorComp AND SHALL NOT BE REPRODUCED, COPIED OR USED AS THE BASIS FOR THE MANUFACTURE OR SALE OF APPARATUS WITHOUT WRITTEN PERMISSION.

DRAWN:

M. SIGMON

DATE:

08/19/2011

**NorComp**

SCALE:

NTS

SHEET

OF

1

2

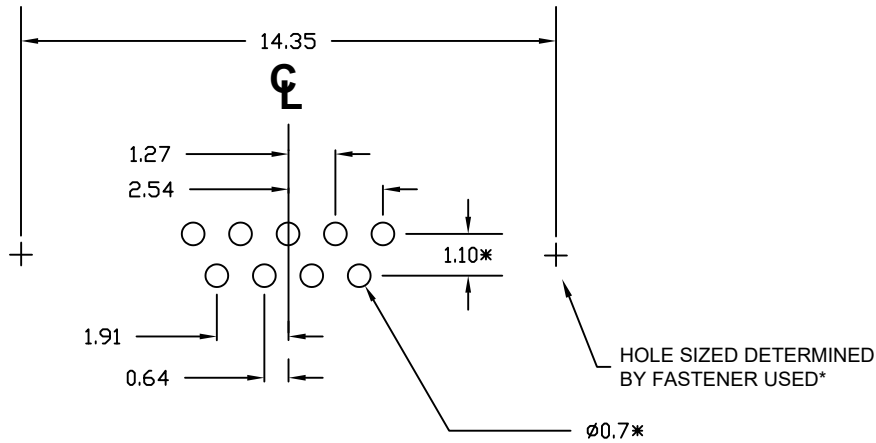
REV

10

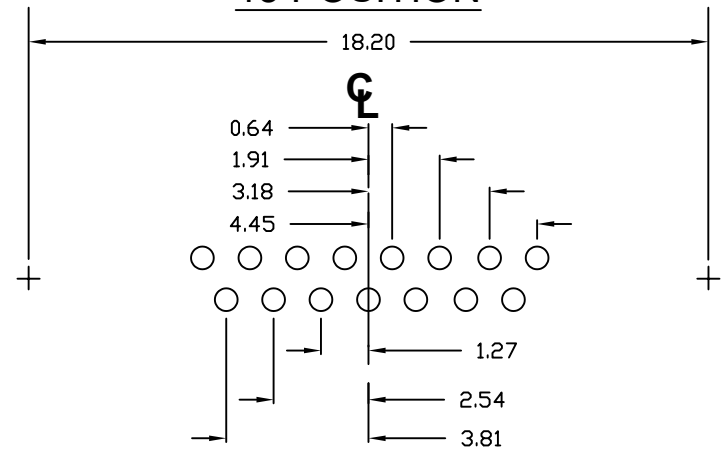
DWG NO.

**380-YYY-213L001**

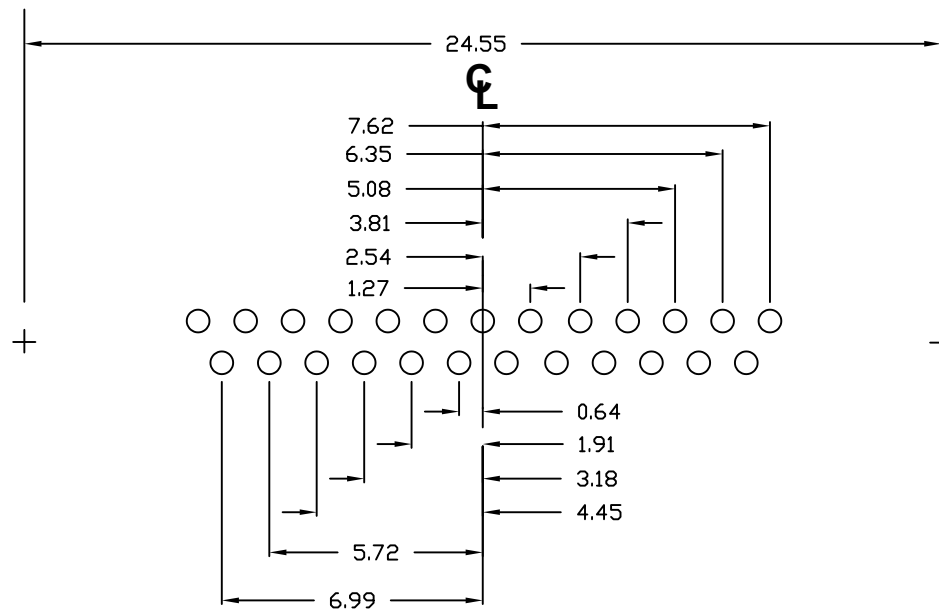
**9 POSITION**



**15 POSITION**



**25 POSITION**



\*TYPICAL

RoHS COMPLIANT

UNITS = mm

DO NOT SCALE FROM DRAWING



THESE DRAWINGS AND SPECIFICATIONS ARE THE PROPERTY OF NorComp AND SHALL NOT BE REPRODUCED, COPIED OR USED AS THE BASIS FOR THE MANUFACTURE OR SALE OF APPARATUS WITHOUT WRITTEN PERMISSION.

DRAWN:  
M. SIGMON

DATE:  
08/19/2011

NorComp

SCALE:  
NTS

SHEET OF  
2 2

REV  
10

DWG NO.

380-YYY-213L001