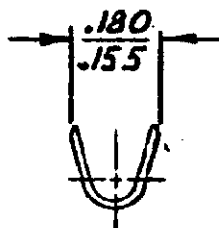
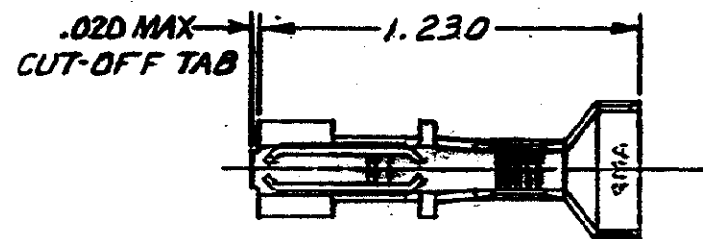


ING MADE IN THIRD ANGLE PROJECTION

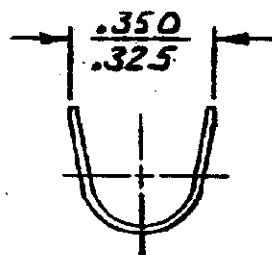
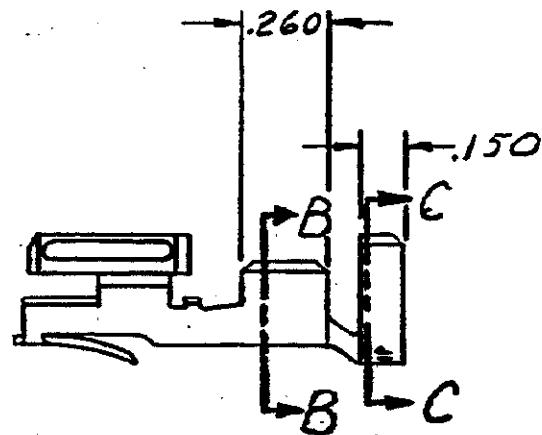
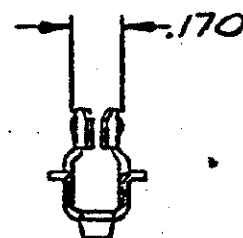
COPYRIGHT 1977 BY AMP INCORPORATED, HARRISBURG, PA.
 ALL INTERNATIONAL RIGHTS RESERVED. AMP INCORPORATED PRODUCTS
 COVERED BY U. S. AND FOREIGN PATENTS AND/OR PATENTS PENDING.

LOC AR DIST 39

REVISIONS					
P	ZONE	LTR	DESCRIPTION	DATE	APPROVED
✓		0	DWG. REL. M-4121	2-11-77	MLF.
✓		A	REVISED PER M-4428	8-25-77	DB/D.H.
✓		A1	RESTORATION	8-25-77	NJ
✓		B	OBSOLETE - 2 SHEETS CM-473	8-26-77	RS
✓		C	WAS LOC CM, REVISED ECN 54141	8-18-87	ML
✓		D	REV. PER ECN CF 1717	11-14-88	JAD SB




SECT. B-B



SECT. C-C

.270	16 - 12	350822-1
INSULATION DIA. MAX	WIRE RANGE	PART NO

UNLESS OTHERWISE SPECIFIED DIMENSIONS ARE IN INCHES. TOLERANCES ON: DECIMALS ±.015 ANGLES ±1°0'	CONTRACT NO	 AMP INCORPORATED Harrisburg, Pa.
	DR <i>M. J. Law</i> 2-4-77	
MATERIAL	CHK <i>D.S. Heide</i> 3/4/77	NAME TERMINAL, HIGH CURRENT, HERMAPHRODITIC, LOOSE PIECE
PHOS BRZ	APPD <i>[Signature]</i> 3/5/77	
FINISH	DSGN APPD	SIZE B CODE IDENT NO 00779 DRAWING NO 350822
TIN	OTHER APPD	SCALE — SHEET 1 OF 1