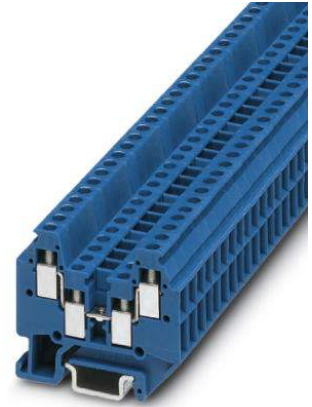



MT 1,5-QUATTRO BU

Order No.: 3025150

<http://eshop.phoenixcontact.de/phoenix/treeViewClick.do?UID=3025150>

Feed-through modular terminal block, Cross section: 0.14 mm² - 1.5 mm², AWG: 26 - 16, Connection type: Screw connection, Width: 4.2 mm, Color: blue, Mounting type: NS 15

Commercial data

| | |
|--------------------------|---|
| GTIN (EAN) |  |
| sales group | A100 |
| Pack | 50 pcs. |
| Customs tariff | 85369010 |
| Catalog page information | Page 429 (CL-2009) |

Product notes

WEEE/RoHS-compliant since:
01/01/2003



<http://www.download.phoenixcontact.com>
Please note that the data given here has been taken from the online catalog. For comprehensive information and data, please refer to the user documentation. The General Terms and Conditions of Use apply to Internet downloads.

Technical data**General**

| | |
|-----------------------|------|
| Number of levels | 2 |
| Number of connections | 4 |
| Color | blue |
| Insulating material | PA |

| | |
|---|---|
| Inflammability class acc. to UL 94 | V0 |
| Dimensions | |
| Width | 4.2 mm |
| Length | 33.5 mm |
| Technical data | |
| Rated surge voltage | 4 kV |
| Pollution degree | 3 |
| Surge voltage category | III |
| Insulating material group | I |
| Connection in acc. with standard | IEC 60947-7-1 |
| Nominal current I_N | 16 A (the maximum load current must not be exceeded by the total current of all connected conductors) |
| Nominal voltage U_N | 400 V |
| Connection data | |
| Conductor cross section solid min. | 0.14 mm ² |
| Conductor cross section solid max. | 1.5 mm ² |
| Conductor cross section stranded min. | 0.14 mm ² |
| Conductor cross section stranded max. | 1.5 mm ² |
| Conductor cross section AWG/kcmil min. | 26 |
| Conductor cross section AWG/kcmil max | 16 |
| Conductor cross section stranded, with ferrule without plastic sleeve min. | 0.25 mm ² |
| Conductor cross section stranded, with ferrule without plastic sleeve max. | 0.75 mm ² |
| Conductor cross section stranded, with ferrule with plastic sleeve min. | 0.25 mm ² |
| Conductor cross section stranded, with ferrule with plastic sleeve max. | 0.75 mm ² |
| 2 conductors with same cross section, solid min. | 0.14 mm ² |
| 2 conductors with same cross section, solid max. | 0.5 mm ² |
| 2 conductors with same cross section, stranded min. | 0.14 mm ² |
| 2 conductors with same cross section, stranded max. | 0.5 mm ² |
| 2 conductors with same cross section, stranded, ferrules without plastic sleeve, min. | 0.25 mm ² |

| | |
|---|----------------------|
| 2 conductors with same cross section, stranded, ferrules without plastic sleeve, max. | 0.34 mm ² |
| Type of connection | Screw connection |
| Stripping length | 6 mm |
| Internal cylindrical gage | A1 |
| Screw thread | M2 |
| Tightening torque, min | 0.22 Nm |
| Tightening torque max | 0.25 Nm |

Certificates / Approvals



Certification

CCA, DNV, GL, GOST, KEMA, UL

Accessories

| Item | Designation | Description |
|-----------------|----------------------|---|
| Assembly | | |
| 3025309 | D-MT 1,5-QUATTRO BU | End cover, Length: 33.5 mm, Width: 1 mm, Color: blue |
| 1401637 | E/MBK | End clamp, width: 6.2 mm, color: gray |
| 1401763 | NS 15 AL PERF 2000MM | DIN rail, material: Aluminum, perforated, height 5.5 mm, width 15 mm, length: 2 m |
| 1401682 | NS 15 PERF 2000MM | DIN rail, material: steel, perforated, height 5.5 mm, width 15 mm, length: 2 m |
| 1401695 | NS 15 UNPERF 2000MM | DIN rail, material: Steel, unperforated, height 5.5 mm, width 15 mm, length: 2 m |

Bridges

| | | |
|---------|-------------|--|
| 3001569 | FBRN 4-4 N | Fixed bridge, Number of positions: 4, Color: aluminum |
| 3001572 | FBRN 5-4 N | Fixed bridge, Number of positions: 5, Color: aluminum |
| 3001585 | FBRN 6-4 N | Fixed bridge, Number of positions: 6, Color: aluminum |
| 3001598 | FBRN 7-4 N | Fixed bridge, Number of positions: 7, Color: aluminum |
| 3001608 | FBRN 8-4 N | Fixed bridge, Number of positions: 8, Color: aluminum |
| 3001624 | FBRN 10-4 N | Fixed bridge, Number of positions: 10, Color: silver |
| 3001637 | FBRN 20-4 N | Fixed bridge, Number of positions: 20, Color: aluminum |

Marking

| | | |
|---------|---------------|---|
| 0803634 | ZBFM 4:SO/CMS | Special printing, Zack marker sheet, flat, 100-section, divisible, marking according to customer requirements |
|---------|---------------|---|

Tools

| | | |
|---------|-----------------|---|
| 1205037 | SZS 0,4X2,5 VDE | Screwdriver, bladed, VDE insulated, size: 0.4 x 2.5 x 80 mm, 2-component grip, with non-slip grip |
|---------|-----------------|---|

Address

PHOENIX CONTACT Inc., USA
586 Fulling Mill Road
Middletown, PA 17057, USA
Phone (800) 888-7388
Fax (717) 944-1625
<http://www.phoenixcon.com>



© 2010 Phoenix Contact
Technical modifications reserved;