

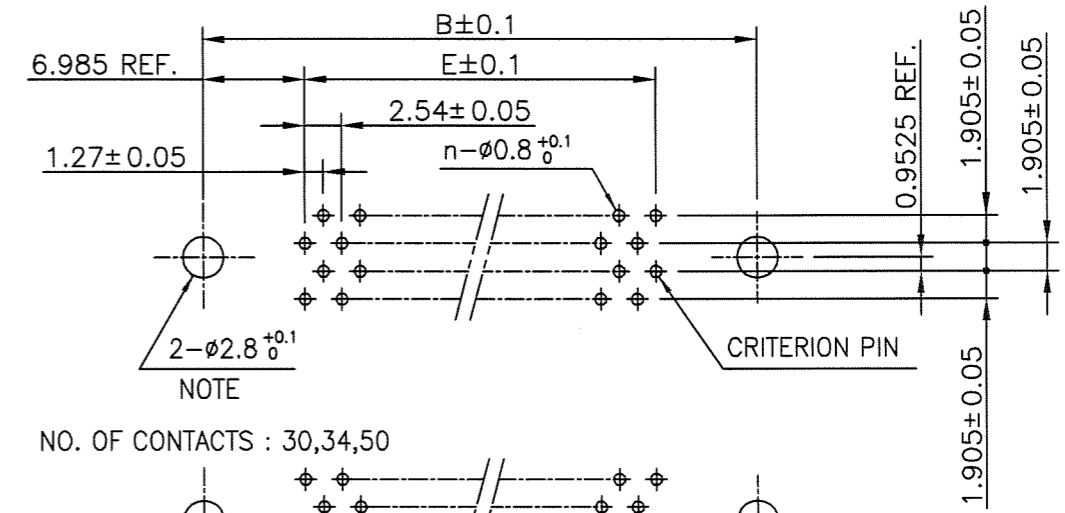
PRODUCT NO.

JSC 97407

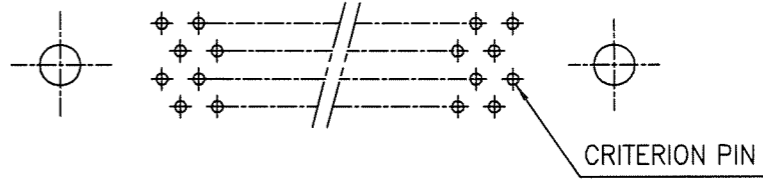
RECOMMENDED PC BOARD

THICKNESS : 1.6 ±0.2  
HOLE PATTERN (COMPONENT SIDE)

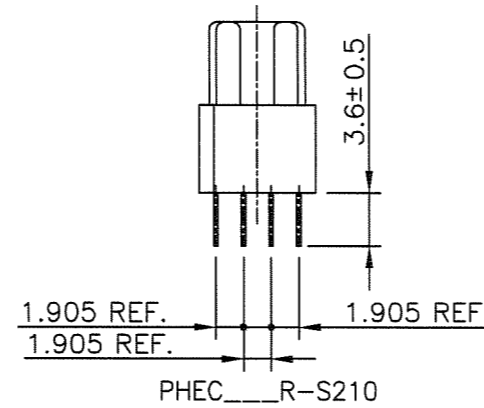
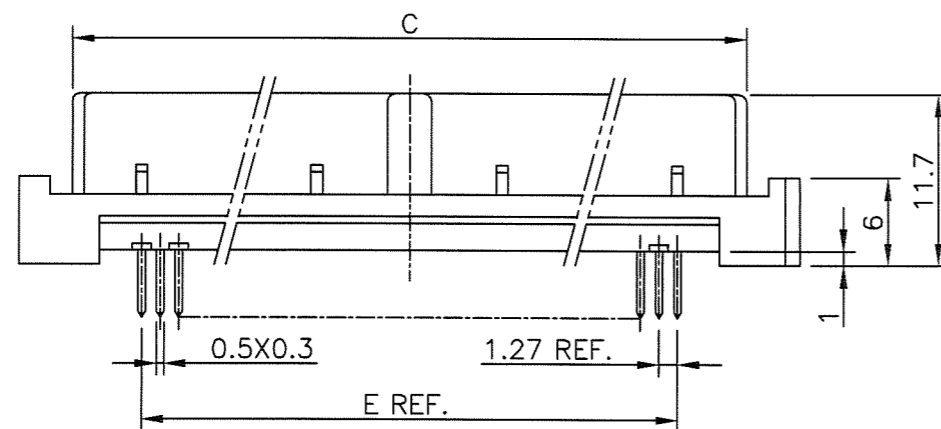
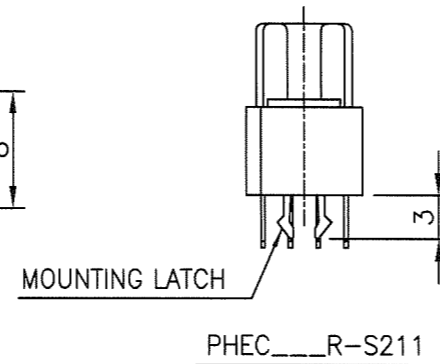
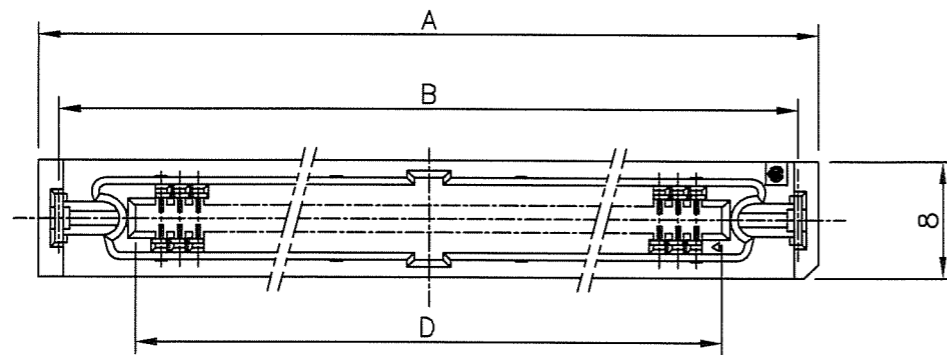
NO. OF CONTACTS : 40,60,68,80,100,120 (n : NO. OF CONTACTS)



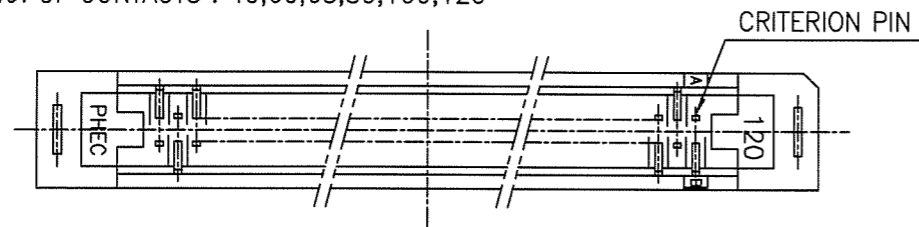
NO. OF CONTACTS : 30,34,50



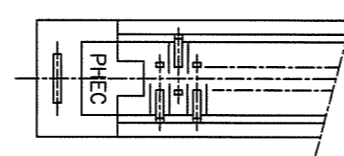
NOTE : THROUGH-HOLES FOR MOUNTING LATCHES ALSO SHOULD BE PLATED.



NO. OF CONTACTS : 40,60,68,80,100,120



NO. OF CONTACTS : 30,34,50



CAT. NO.	NO. OF CONTACTS (MATING SIDE)	DIMENSIONS				
		A	B	C	D	E
PHEC30R-S21_LF	15/ROW X 2 ROWS	34.55	31.75	27.26	21.26	17.78
PHEC34R-S21_LF	17/ROW X 2 ROWS	37.09	34.29	29.80	23.80	20.32
PHEC40R-S21_LF	20/ROW X 2 ROWS	40.90	38.10	33.61	27.61	24.13
PHEC50R-S21_LF	25/ROW X 2 ROWS	47.25	44.45	39.96	33.96	30.48
PHEC60R-S21_LF	30/ROW X 2 ROWS	53.60	50.80	46.31	40.31	36.83
PHEC68R-S21_LF	34/ROW X 2 ROWS	58.68	55.88	51.39	45.39	41.91
PHEC80R-S21_LF	40/ROW X 2 ROWS	66.30	63.50	59.01	53.01	49.53
PHEC100R-S21_LF	50/ROW X 2 ROWS	79.00	76.20	71.71	65.71	62.23
PHEC120R-S21_LF	60/ROW X 2 ROWS	91.70	88.90	84.41	78.41	74.93

NOTES

- BODY MATERIAL : PBT GLASS FILLED (UL94V-0), COLOR BLACK
- TERMINAL MATERIAL : PHOSPHOR BRONZE
- MOUNTING LATCH MATERIAL : PHOSPHOR BRONZE
- TERMINAL FINISH  
CONTACT AREA : GOLD 0.25µm min. OVER NICKEL UNDERLAYER  
SOLDER TAILS : PURE Sn 2µm min. OVER NICKEL UNDERLAYER
- MOUNTING LATCH FINISH : PURE Sn 2µm min. OVER NICKEL UNDERLAYER
- THIS PRODUCT MEETS EUROPEAN UNION DIRECTIVES AND OTHER COUNTRY REGULATIONS AS DESCRIBED IN GS-22-008
- THE HOUSING WILL WITHSTAND EXPOSURE TO 260 DEGREE PEAK TEMPERATURE FOR 10 SECONDS IN A WAVE SOLDER APPLICATION WITH A 1.6mm MINIMUM THICK CIRCUIT BOARD.

mat'l. code ---				surface ISO 1302 ✓		tolerance ISO 406 ISO 1101		projection		product family PHEC		CODE JP
ltr description ecn no dr date				tolerances unless otherwise specified		linear		MM		title PRINTED CIRCUIT CONNECTOR (CAT.NO.PHEC ___ R-S21_LF)		
A	RELEASED	J08-0178	S.W	2008-4-18	0.X	±0.3	scale N/A		dwg no JSC 97407		sheet 1 of 1 size A3	
sheet index				revision sheet		A 1		FCI		type Customer Drawing		
dr S.WATANABE 2008-4-18				engr S.WATANABE 2008-4-18		chr [Signature] 2008-4-22		appd [Signature] 2008-4-22		Rev. A		



FCIconnect.com

Copyright FCI.