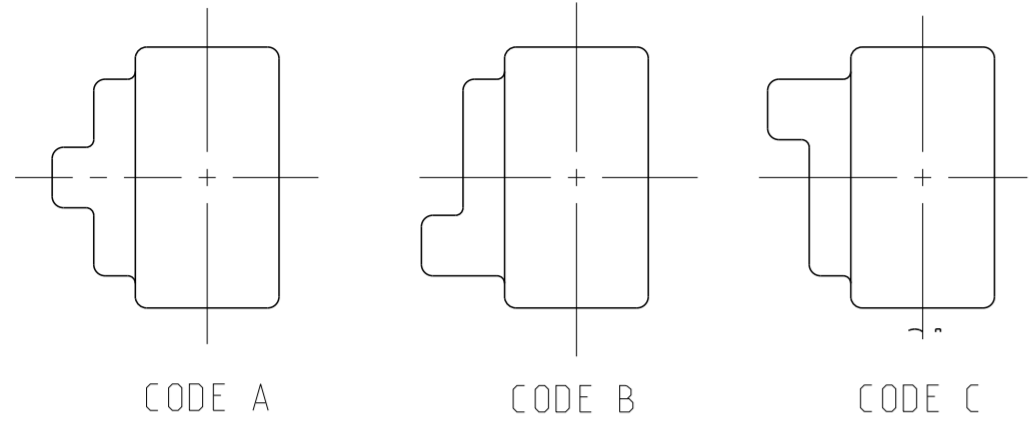


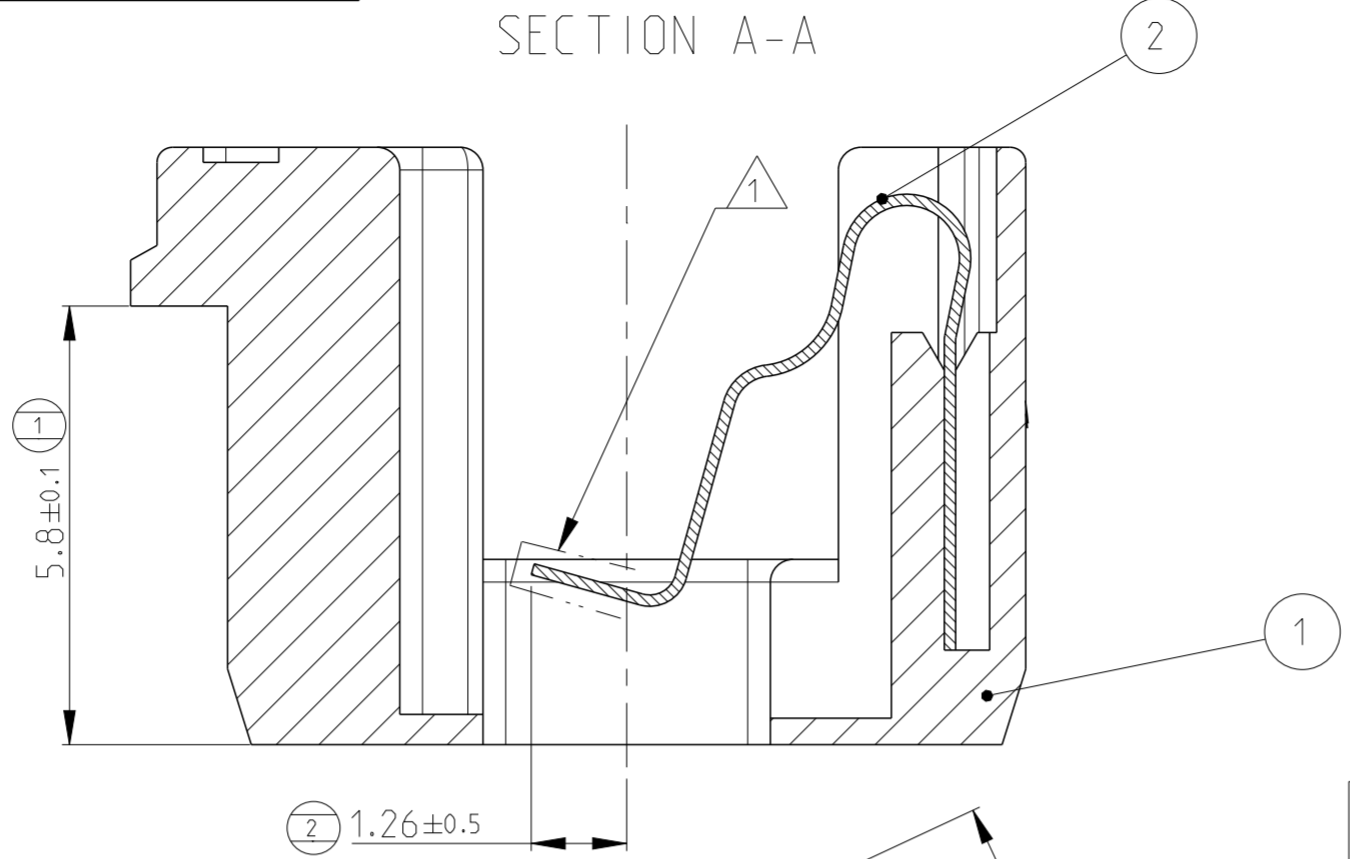
THIS DRAWING IS UNPUBLISHED. RELEASED FOR PUBLICATION 2011
 © COPYRIGHT 2011 ALL RIGHTS RESERVED.

| REVISIONS | | | | | | | |
|-----------|------|----|-----|---------------|-----------|-----|------|
| LOC | DIST | P | LTR | DESCRIPTION | DATE | DWN | APVD |
| - | - | B4 | | ECR-11-007201 | 06APR2011 | SPB | JM |
| | | B5 | | ECR-14-015672 | 21OCT2014 | OP | XR |

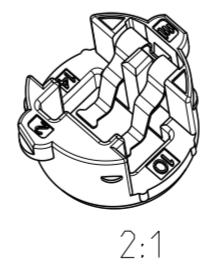
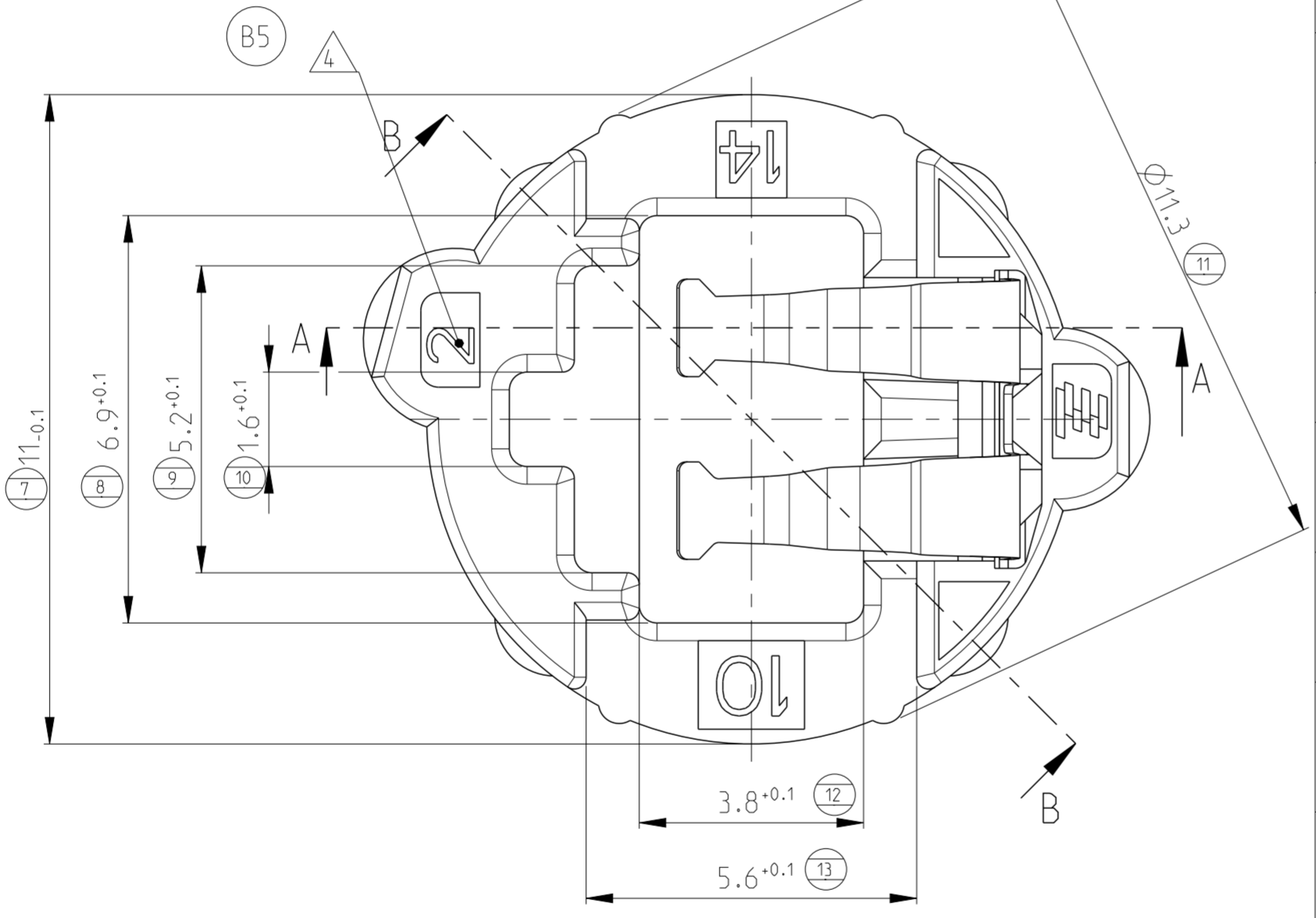
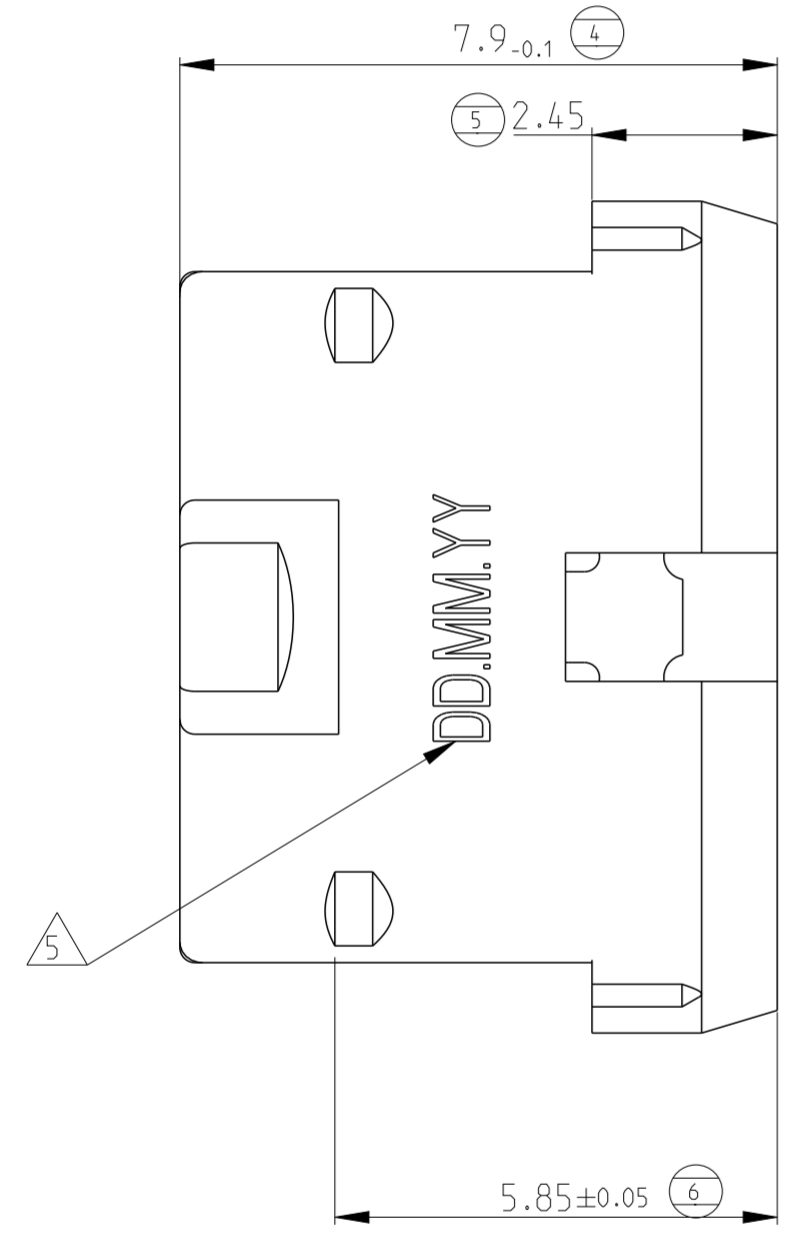
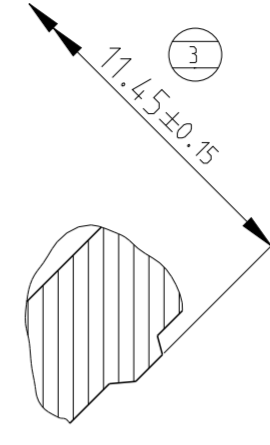
CODINGS
SCALE 5:1



SECTION A-A



B-B



NOTES:

- 1 SELECTIVE PLATING IN THIS AREA >0.8 microns GOLD OVER >2.0 microns NICKEL
- 2 GENERAL TOLERANCE UNLESS OTHERWISE STATED ± 0.1mm
- 3. PACKAGING - LOOSE PIECE
- 4 MOULD IMPRESSION NUMBER
- 5 ASSEMBLY MANUFACTURING DATE CODE (DD.MM.YY)

| ASSEMBLY No. | CODE | POSN | DESCRIPTION | MATERIAL | COLOUR | RAL NO. |
|--------------|------|------|---------------|--------------|--------|---------|
| 3-1703884-2 | C | 2 | SHORTING CLIP | Cu ALLOY | | |
| | | 1 | SCR HOUSING | 10% G.F. PBT | ORANGE | 2007 |
| 3-1703884-1 | C | 2 | SHORTING CLIP | Cu ALLOY | | |
| | | 1 | SCR HOUSING | 10% G.F. PBT | BLUE | 5012 |
| 2-1703884-2 | B | 2 | SHORTING CLIP | Cu ALLOY | | |
| | | 1 | SCR HOUSING | 10% G.F. PBT | GREY | 7037 |
| 2-1703884-1 | B | 2 | SHORTING CLIP | Cu ALLOY | | |
| | | 1 | SCR HOUSING | 10% G.F. PBT | GREEN | 6032 |
| 1-1703884-6 | A | 2 | SHORTING CLIP | Cu ALLOY | | |
| | | 1 | SCR HOUSING | 10% G.F. PBT | GREEN | 6032 |
| 1-1703884-5 | A | 2 | SHORTING CLIP | Cu ALLOY | | |
| | | 1 | SCR HOUSING | 10% G.F. PBT | PURPLE | 4006 |
| 1-1703884-4 | A | 2 | SHORTING CLIP | Cu ALLOY | | |
| | | 1 | SCR HOUSING | 10% G.F. PBT | RED | 3000 |
| 1-1703884-3 | A | 2 | SHORTING CLIP | Cu ALLOY | | |
| | | 1 | SCR HOUSING | 10% G.F. PBT | YELLOW | 1016 |
| 1-1703884-2 | A | 2 | SHORTING CLIP | Cu ALLOY | | |
| | | 1 | SCR HOUSING | 10% G.F. PBT | BLUE | 5012 |
| 1-1703884-1 | A | 2 | SHORTING CLIP | Cu ALLOY | | |
| | | 1 | SCR HOUSING | 10% G.F. PBT | BLACK | 9012 |

THIS DRAWING IS A CONTROLLED DOCUMENT. DWN J.Marsh 15JUN07
 CHK B.Baker 15JUN07

STE TE Connectivity

NAME: 2 POS, SHORT CIRCUIT SPRING HOUSING ASSY

PRODUCT SPEC: 108-3644

APPLICATION SPEC: -

MATERIAL: SEE ABOVE

WEIGHT: 0.5 g

SIZE: A2 CAGE CODE: 00779 DRAWING NO: C-1703884

RESTRICTED TO: -

CUSTOMER DRAWING SCALE: 10:1 SHEET: 1 OF 1 REV: B5