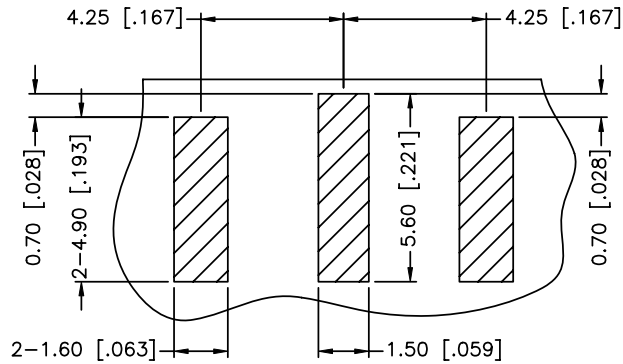
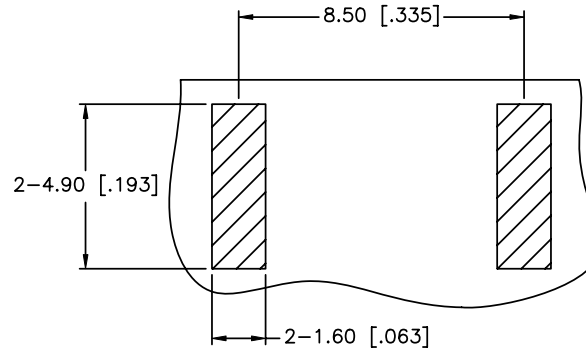


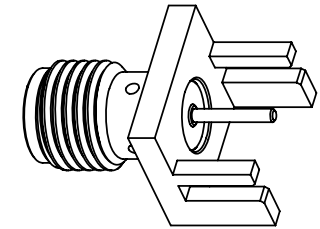
REV.	DATE	ECR NO.	DESCRIPTION
NC	03/13/12	XXXXXX	INITIAL RELEASE



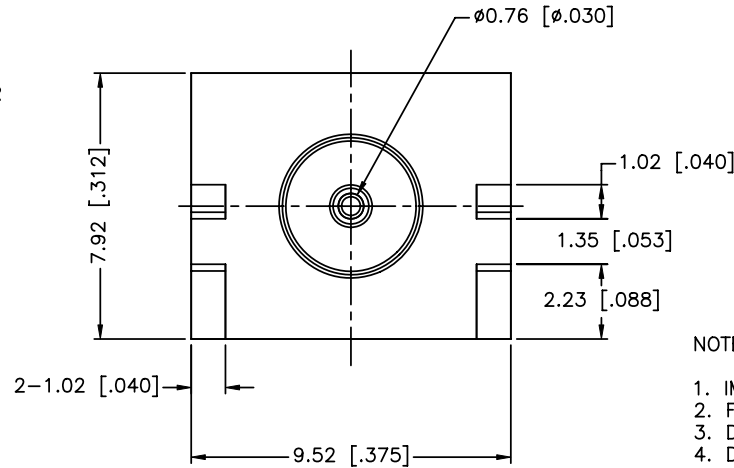
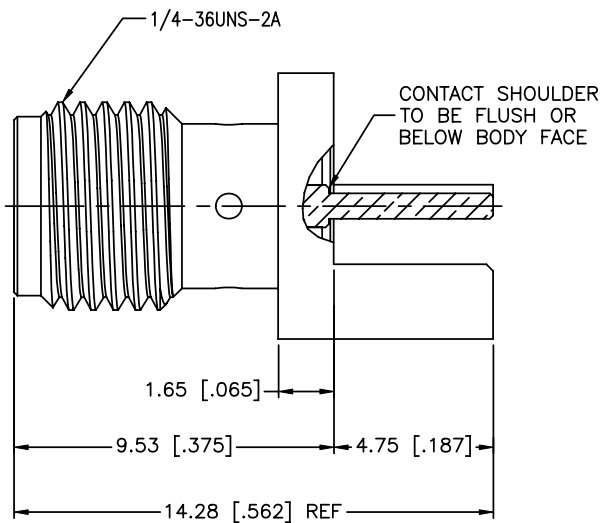
TOP VIEW



BOTTOM VIEW



RECOMMENDED PCB LAYOUT



NOTES:

1. IMPEDANCE: 50 OHM
2. FREQUENCY RANGE: DC-18 GHZ
3. DIELECTRIC WITHSTANDING VOLTAGE: 1000 VRMS, MIN.
4. DURABILITY: 500 CYCLES MIN.
5. TEMPERATURE RANGE: -65°C TO +165°C
6. CONTACT PIN MUST WITHSTAND 6 LBS MIN. AXIAL IN BOTH DIRECTIONS AND 4 IN-OZ MIN. RADIAL FORCE.
7. BOARD THICKNESS=1.19 MM [.047"]

UNLESS OTHERWISE SPECIFIED DIMENSIONS ARE IN MILLIMETERS. DIMENSIONS IN [ ] ARE IN INCHES AND FOR CUSTOMER REFERENCE ONLY.

UNLESS OTHERWISE SPECIFIED TOLERANCES FOR MILLIMETERS ARE:  
 0.5 - 8mm ± 0.20mm  
 8 - 30mm ± 0.40mm  
 30 - 120mm ± 0.50mm

UNLESS OTHERWISE SPECIFIED TOLERANCES FOR INCHES ARE:  
 .020 - .315 = ± 0.007"  
 .315 - 1.180 = ± 0.015"  
 1.180 - 4.724 = ± 0.020"

APPROVALS		DATE
DRAWN	I.XU	03/13/12
CHECKED		
ISSUED		
SHEET	1 OF 1	
CAD FILE		
C:/CONNEX/132410-10.DWG		

# Amphenol Connex

PART DESCRIPTION  
**SMA END LAUNCH RECEPTACLE, FLUSH FLANGE  
 (.047" BOARD THICKNESS)**

PART NO. **132410-10**

DWG. NO. 132410-10.DWG    REV. NC    SIZE A    SCALE NA

QTY	DESCRIPTION	MATERIAL	FINISH
1	CONTACT PIN	BERYLLIUM COPPER	GOLD
2	INSULATOR	PTFE	NATURAL
1	BODY	BRASS	GOLD

DO NOT SCALE DRAWING