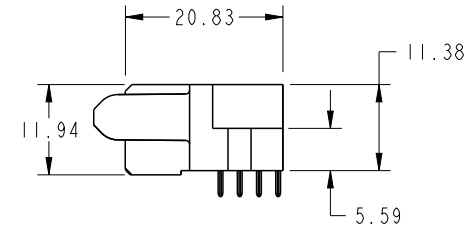
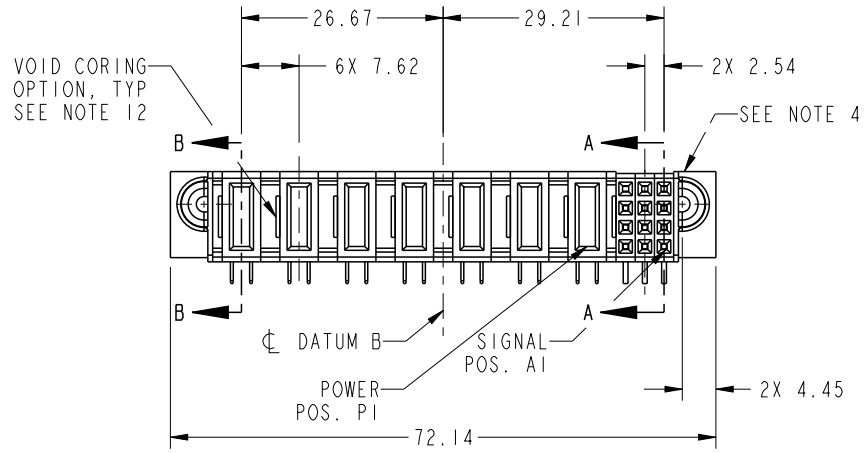


PRODUCT NO. 51915-313-- NOTE 3	ROWS D C B A	POWER							SIGNAL			E1
		E2	P7	P6	P5	P4	P3	P2	P1	3	2	



CODE	DIM "M" MATING LENGTH	CONTACT TYPE
PA	[1.07]	POWER
H	[N/A]	SIGNAL
G	[N/A]	SIGNAL
F	[N/A]	SIGNAL
E	[N/A]	SIGNAL
PC	[2.34]	POWER

spec ref	SEE NOTES	
tolerance std	TOLERANCES UNLESS OTHERWISE SPECIFIED	
SEE NOTES	0.X	±0.50
	0.XX	±0.25
	0.XXX	±0.10
surface	angular	0° ±2°

dr	Guang, Shi	2011/07/26
eng	Guang, Shi	2011/08/15
chr	-	-
appr	Pei-Ming Zheng	2011/08/15

projection	MM	size	A4	scale	1:1
product family	PwrBlade		rel level	Released	

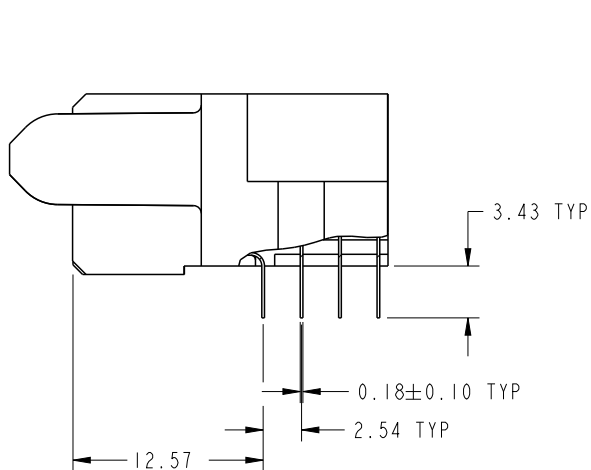
	title	12S + 7ACP	dwg no	51915-313	rev	A
www.fci.com	cat. no.	Product - Customer Drw	sheet 1 of 4			



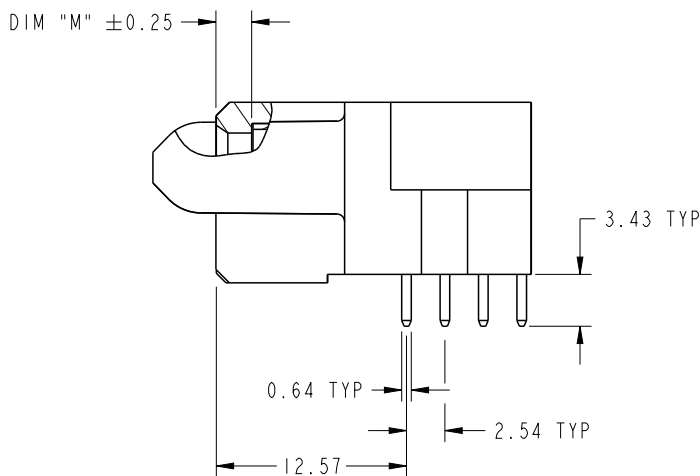
Copyright FCI.

PRODUCT NUMBER

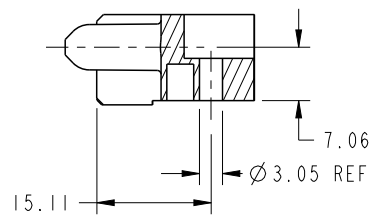
51915-313_
NOTE 3



BROKEN-OUT SECTION A-A
SCALE 2:1



BROKEN-OUT SECTION B-B
SCALE 2:1

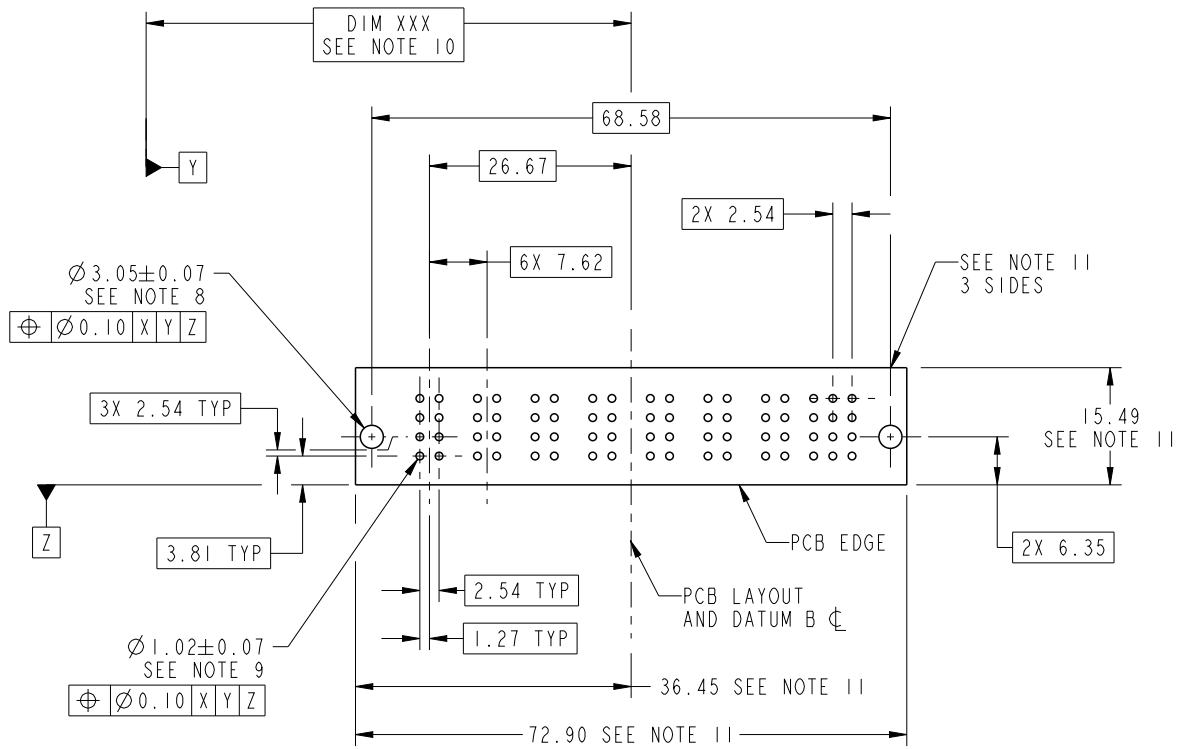


SECTION C-C

dr	Guang, Shi	2011/07/26	projection 	MM 	size	A4	scale	1:1
eng	Guang, Shi	2011/08/15			ecn no	-		
chr	-	-			rel level	Released		
appr	Pei-Ming Zheng	2011/08/15	product family	PwrBlade	rev	A		
		title 12S + 7ACP R/A STB RECEPTACLE	dwg no 51915-313	cat. no. Product - Customer Drw	sheet 2 of 4			

PRODUCT NUMBER

51915-313__
NOTE 3



RECOMMENDED PCB LAYOUT

dr	Guang, Shi	2011/07/26	projection 	MM 	size	A4	scale	1:1
eng	Guang, Shi	2011/08/15			ecn no	-		
chr	-	-			rel level	Released		
appr	Pei-Ming Zheng	2011/08/15	product family	PwrBlade	rev	A		
	title	12S + 7ACP R/A STB RECEPTACLE		dwg no	51915-313			
www.fci.com	cat. no.	Product - Customer Drw			sheet 3 of 4			

PRODUCT NUMBER

51915-313__
NOTE 3

NOTES:

1. DIMENSIONS AND TOLERANCES ARE IN ACCORDANCE WITH ASME Y14.5M, 1994 UNLESS OTHERWISE SPECIFIED.

CONNECTOR NOTES:

- 2. HOUSING MATERIAL: UL 94 V-0 GLASS FILLED HIGH-TEMP THERMOPLASTIC
POWER CONTACT MATERIAL: COPPER ALLOY
SIGNAL PIN MATERIAL: COPPER ALLOY
- 3. SEE ITEM 5 & 6 IN PRINT 10064183 FOR PLATING SPEC OF 51915-313 AND 51915-313LF RESPECTIVELY.
- 4. MANUFACTURER'S NAME, DATE CODE AND OPTIONAL P/N TO APPEAR ON THIS SURFACE. THE P/N CAN BE OMITTED IF THERE IS NOT ENOUGH SPACE ON THIS SURFACE.
- 5. PRODUCT SPECIFICATION GS-12-149.
APPLICATION SPECIFICATION BUS-20-067.
- 6. PACKAGED IN TRAYS.

PCB NOTES:

- 7. ALL HOLE DIAMETERS ARE FINISHED HOLE SIZE.
- 8. MOUNTING HOLES, WHERE APPLICABLE, ARE UNPLATED.
- 9. $\varnothing 1.151 \pm 0.025$ DRILLED HOLES PLATED WITH 0.008 MIN SnPb OR Sn OVER 0.03 TO 0.08 Cu PLATING TO ACHIEVE $\varnothing 1.02 \pm .07$ HOLE.
- 10. "DIM XXX" TO BE DETERMINED BY THE CUSTOMER.
- 11. CONNECTOR KEEP-OUT ZONE.
- 12. THE VOID CORING IN BETWEEN POWER MODULES, SIGNAL MODULES AND END MODULES ARE OPTIONAL AND THE SHAPE MAY BE DIFFERENT FOR OPTIMIZE THE MOLDING PROCESS. THE VOID CORING WILL NOT EFFECT TO PRODUCT FUNCTION.

dr	Guang, Shi	2011/07/26	projection 	MM 	size	A4	scale	1:1			
eng	Guang, Shi	2011/08/15			ecn no	-					
chr	-	-			product family	PwrBlade	rel level	Released			
appr	Pei-Ming Zheng	2011/08/15			title	12S + 7ACP		dwg no	51915-313	rev	A
www.fci.com		cat. no.	Product - Customer Drw			sheet 4 of 4					



Copyright FCI.