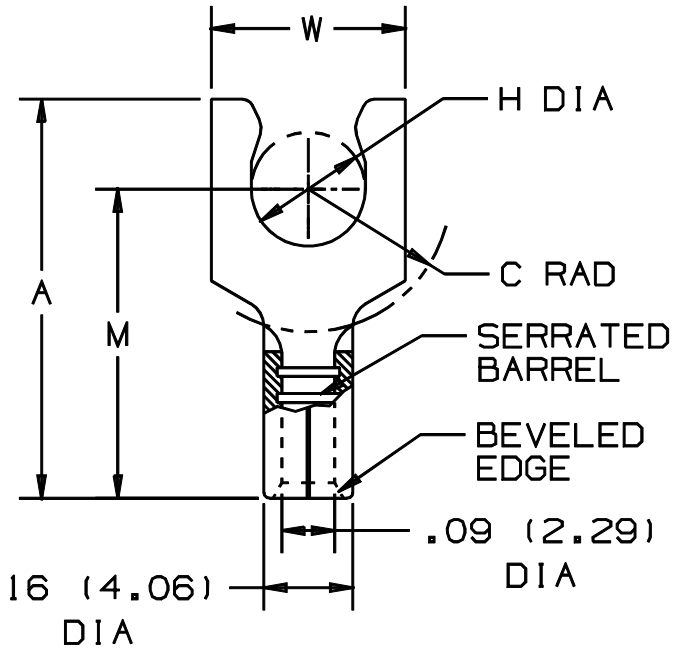


THIS COPY IS PROVIDED ON A RESTRICTED BASIS AND IS NOT TO BE USED IN ANY WAY DETRIMENTAL TO THE INTERESTS OF PANDUIT CORP.

PANDUIT PART NUMBER	STUD SIZE	DIMENSIONS in.				
		A $\pm .020$	W $\pm .010$	C $\pm .015$	M $\pm .020$	H $\pm .010$
P14-5SLF	#5	.51 (12.95)	.25 (6.35)	.22 (5.59)	.39 (9.91)	.12 (3.05)
P14-6SLF	#6	.51 (12.95)	.25 (6.35)	.22 (5.59)	.39 (9.91)	.14 (3.56)
P14-8SLF	#8	.56 (14.22)	.29 (7.37)	.25 (6.35)	.44 (11.18)	.16 (4.06)
P14-10SLF	#10	.57 (14.48)	.33 (8.38)	.25 (6.35)	.44 (11.18)	.19 (4.83)
P14-14SLF	1/4"	.66 (16.76)	.44 (11.18)	.35 (8.89)	.50 (12.70)	.25 (6.35)



NOTES:

1. UL LISTED AND CSA CERTIFIED FOR:
  - A. #16-14 AWG SOLID OR STRANDED COPPER WIRE
2. MATERIAL:
  - A. STAMPING - .03" (.76) THK COPPER, TIN PLATED
3. PACKAGE QTY: STD. PKG. 100  
BULK PKG. 1000
4. DIMENSIONS IN BRACKETS ARE IN MILLIMETERS
5. INSTALLATION TOOLS:
  - A. UL LISTED AND CSA CERTIFIED: CT-100, CT-200, CT-570, CT-1570
  - B. PANDUIT APPROVED: CT-160, CT-260



LISTED  
587H



CERTIFIED  
LR31212

A41243\_00

**PANDUIT**

CORP.

TINLEY PARK, ILLINOIS

#16-14 BARREL NON-INSULATED  
SHORT LOCKING FORK

00 5/99 JKD

RELEASED

REV DATE BY CHK

DESCRIPTION

ECN

PM

APP

DRAWN BY  
DAW

CHK'D

SCALE

NONE

DRAWING NO.

A41243