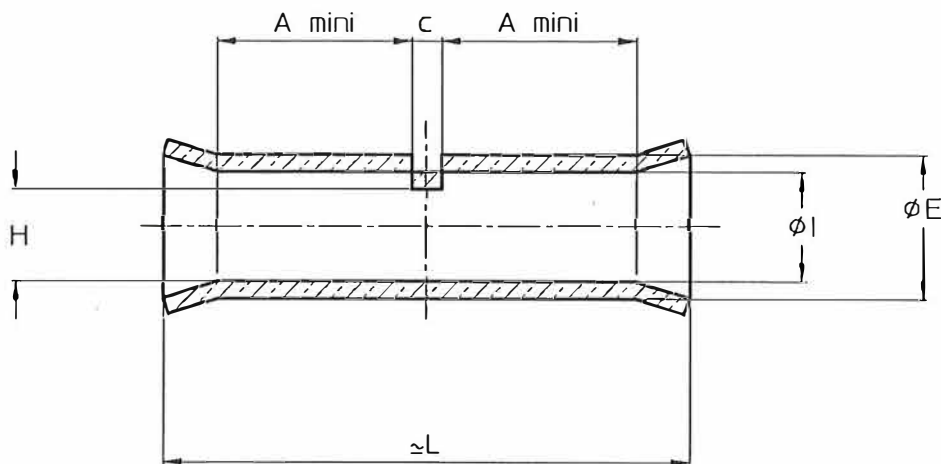


MARKING:  SECTION



MATERIAL: TINNED COPPER

SECTION (mm ²)	Code	REFERENCE	DIMENSIONS(mm)						DIE Groove	
			øI	øE	Amini	C	H maxi	≈L	SIMEL	BURNDY
6	00500.0	XG7T 6	3.3	5.6	10	2	2.5	30	E 6 Cu	-
10	00612.0	XG7T 10	4.2	6.8	10	2	3.3	31	E 10 Cu	6
16	00613.0	XG7T 16	5.3	8	13	3	4.3	38	E 16 Cu	7 or 374
25	00614.0	XG7T 25	6.6	9.5	13	3	5.4	39	E 25 Cu	8 or 346
35	00615.0	XG7T 35	7.9	11	13	3	6.4	39	E 35 Cu	10
50	00616.0	XG7T 50	9.2	12.5	18	3	7.6	50	E 50 Cu	11 or 375
60	00617.0	XG7T 60	10.5	13	18	3	8.5	47	E 60 Cu	12 or 348
70	00618.0	XG7T 70	11	15	18	3	9.2	52	E 70 Cu	13
95	00619.0	XG7T 95	13.1	17	24	4	10.8	65	E 95 Cu	14
120	*00620.0	XG7T 120	14.5	19.1	26	4	12.1	71	E120 Cu	15 or 16
150	00621.0	XG7T 150	16.2	21	29	4	13.6	78	E 150 Cu	17 or 298
185	00622.0	XG7T 185	18	23	33	4	15.1	86	E 185 Cu	18 or 324
240	00623.0	XG7T 240	20.6	26	36	4	17.2	94	E 240 Cu	19 or 470 20 or 299
300	00624.0	XG7T 300	23.1	28	41	4	19.3	102	E 300 Cu	22 or 472




SIMEL reserve the right to modify product technical characteristics without prior notice

09VAB0030b



TIN COATED COPPER SPLICE

XG7T

a	first issue	16/03/90	drawn
b	Add.Ref	16/05/90	checked
			approved:
			
			
			

Telex:350856F Fax:80341015

Ech: 11 *