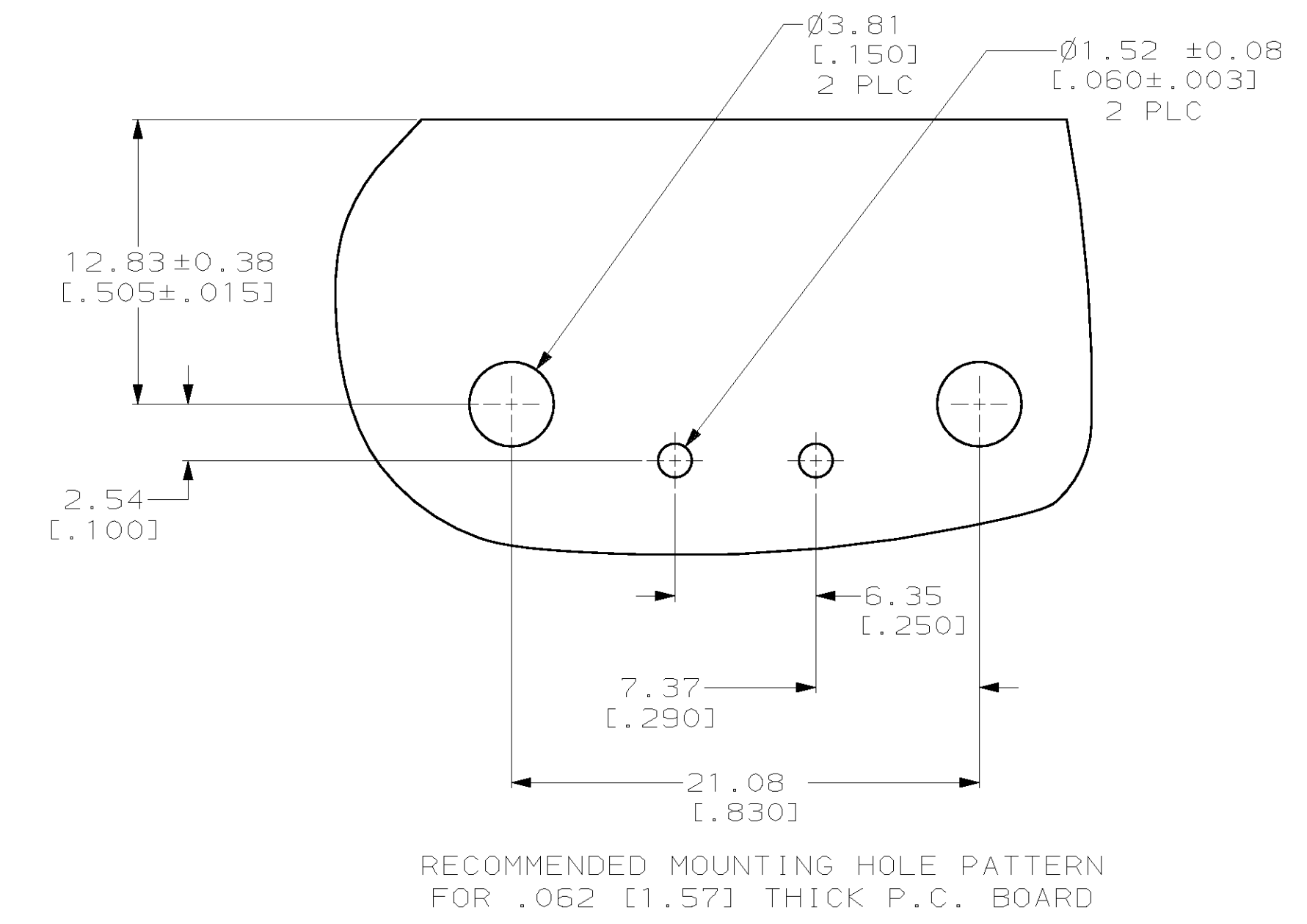
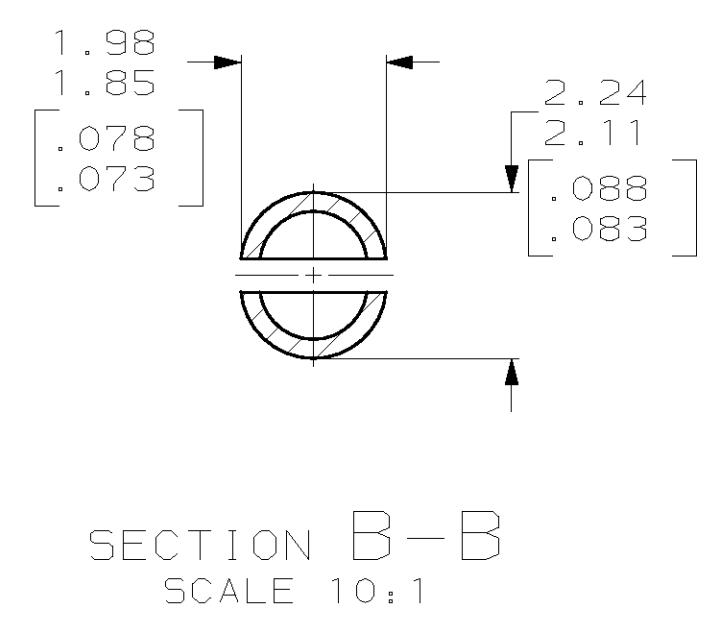
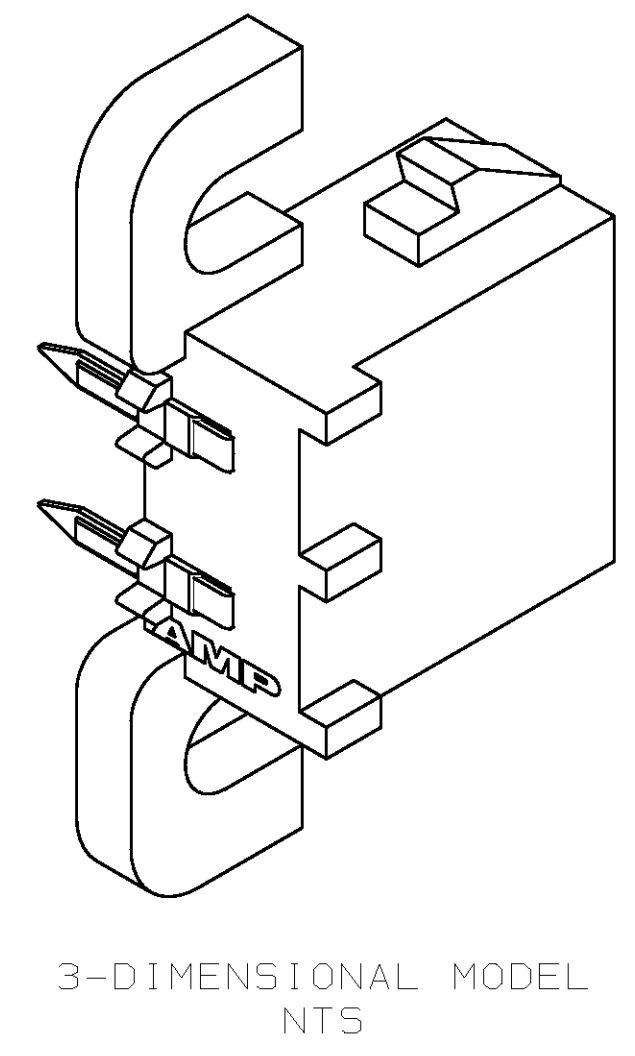
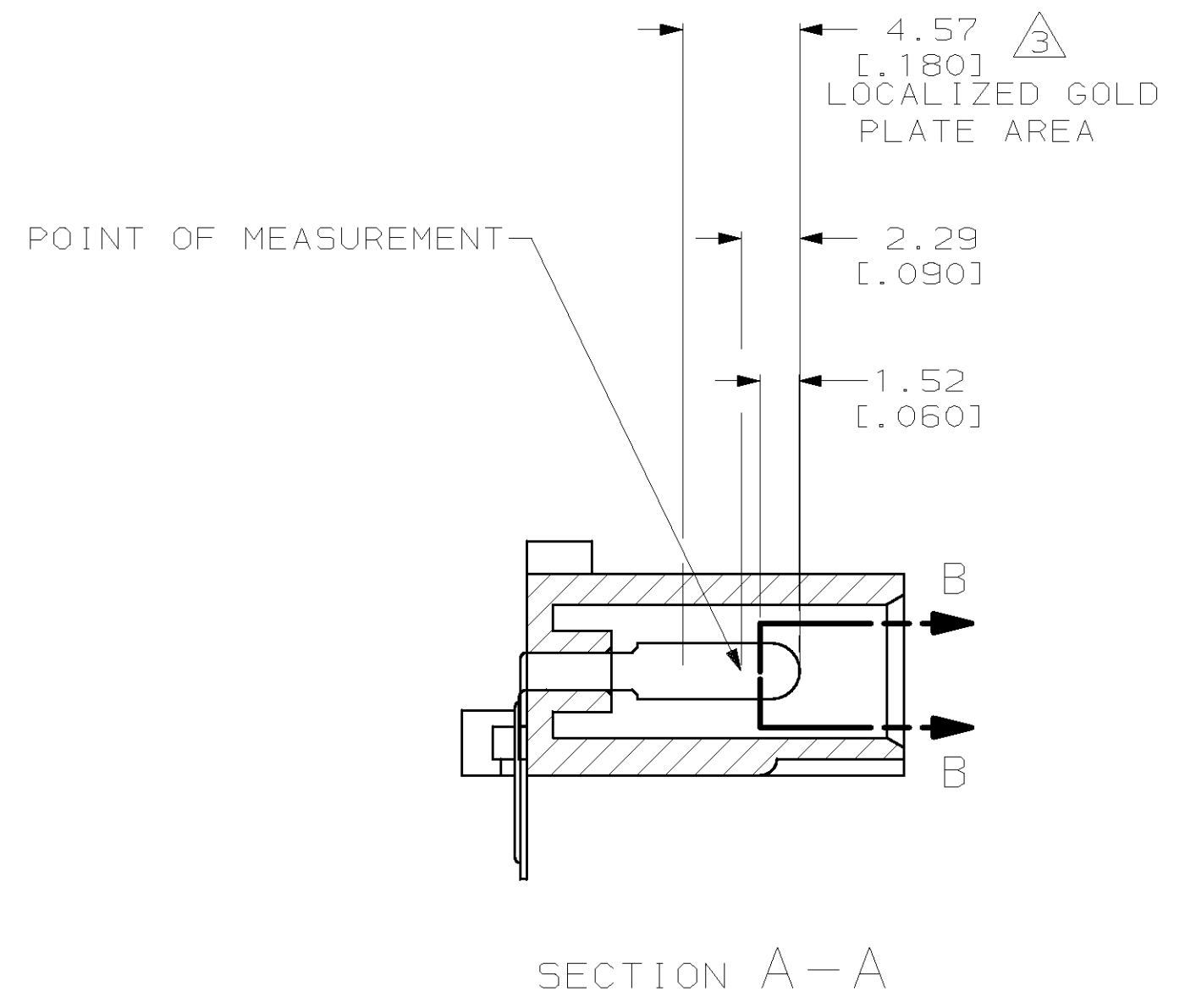
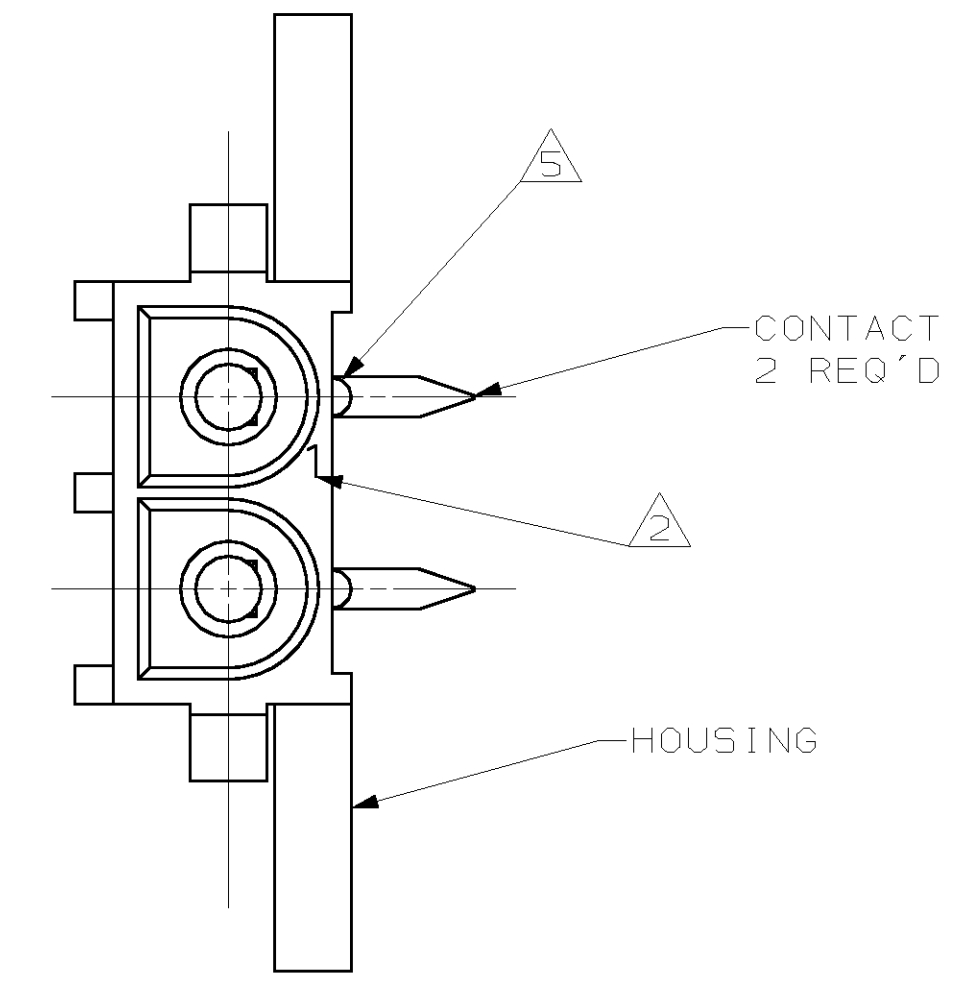
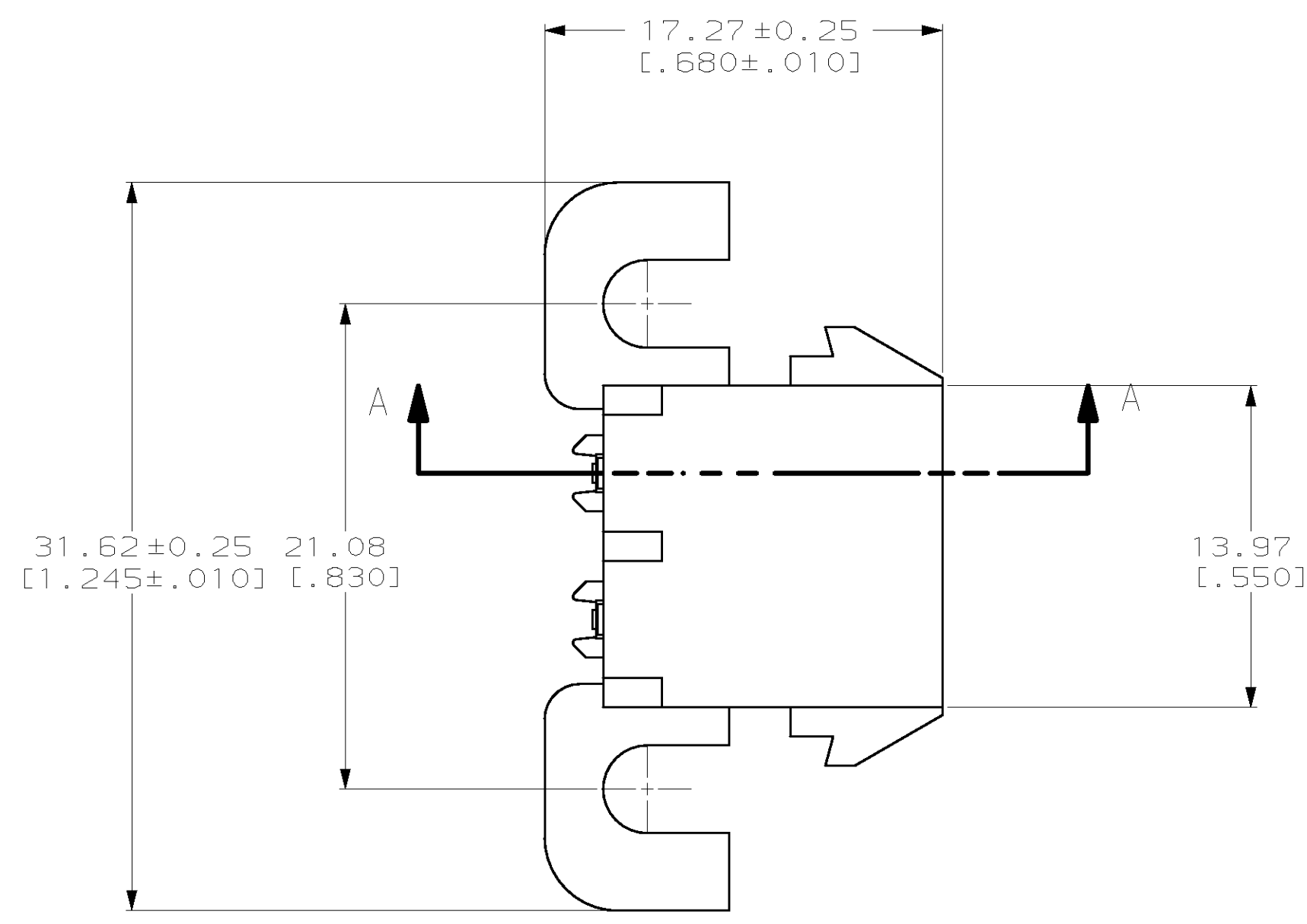
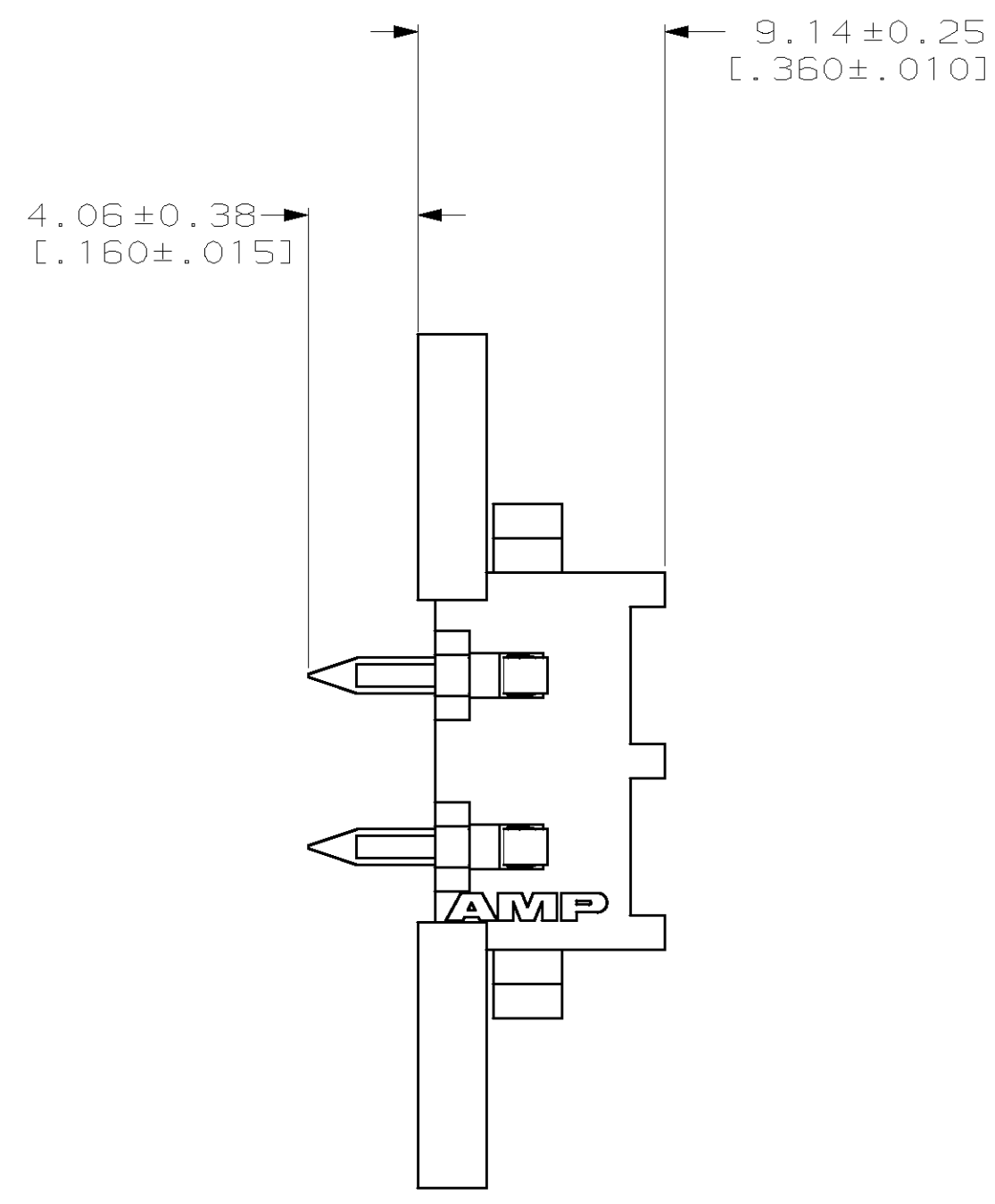


REV. NO.		REVISIONS			
LOC	QTY	TR	DATE	BY	APPV
CM	53	K	REV & REDWN PER EC 0618-0126-98	4-30-98	BL RS

- PARTS COMPLY WITH AMP SOLDERABILITY SPECIFICATION 109-11-5.
- CIRCUIT IDENTIFICATION CHARACTERS ARE ADJACENT TO THE INDICATED CAVITIES, BUT LOCATION AND ORIENTATION MAY DIFFER FROM PRINT.
- CONTACT IS PLATED OVERALL WITH 0.00127 [0.00050] MIN NICKEL, THEN 0.00076 [0.00030] GOLD OVER CONTACT LENGTH INDICATED AND MATTE TIN FINISH ON SOLDER TAIL END.
- DIMENSIONS IN BRACKETS ARE IN INCHES.
- OPTIONAL CONSTRUCTION MAY DELETE THIS RIB.



PH BRZ GOLD	NYLON UL 94V-0	2-350942-0
PH BRZ TIN	NYLON UL 94V-0	1-350942-0
CONTACT	HOUSING	PART NO

THIS DRAWING IS A CONTROLLED DOCUMENT.

DIMENSIONS IN INCHES	TOLERANCES UNLESS OTHERWISE SPECIFIED:	OWN: B. LEWIS 4-30-98	AMP Incorporated Harrisburg, PA 17105-3608
1 PLC ±	1 PLC ±	CHK: R. SWING 4-30-98	AMP
2 PLC ±	2 PLC ±	APPV: K. CORLE 4-30-98	PIN HEADER ASSEMBLY, RIGHT ANGLE MOUNT, 2 POSITION, UNIVERSAL MATE-N-LOK™
3 PLC ±0.13(.005)	3 PLC ±	PRODUCT SPEC	SIZE: A1 00779 C 350942
4 PLC ±	4 PLC ±	APPLICATION SPEC	SCALE: 4:1 SHEET 1 OF 1 REV K
MATERIAL: SEE TABLE	FINISH: SEE TABLE	HEIGHT: -	CUSTOMER DRAWING

METRIC