

## INSULATED PC SPACERS/SUPPORTS

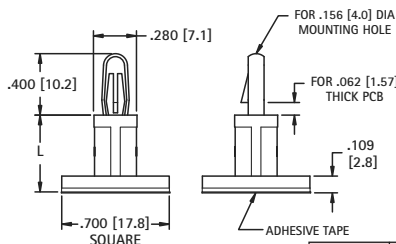
- Board will be electrically insulated, eliminates need for insulating washers
- No tool required for installation • Easy snap-in assembly

### ADHESIVE LOCK-IN RELEASE SUPPORTS

- One end attaches to chassis with self adhesive pads
- No drilling to chassis required leaving outside in perfect condition
- Other end snap into .062 (1.57) board
- Board is easily releasable for repair or upgrade

.156 (4.0)

#### ADHESIVE MOUNT

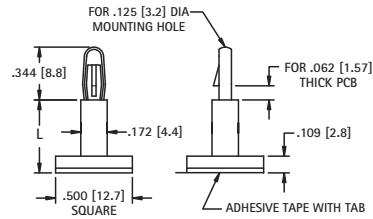
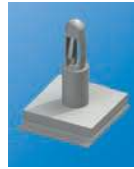


| CAT. NO. | L LENGTH    |
|----------|-------------|
| 9080     | .187 (4.7)  |
| 9081     | .250 (6.4)  |
| 9082     | .375 (9.5)  |
| 9083     | .500 (12.7) |
| 9084     | .625 (15.9) |

Material: Nylon 6/6, UL Rated 94V-0

.125 (3.2)

#### ADHESIVE MOUNT SLIMLINE



| CAT. NO. | L LENGTH    |
|----------|-------------|
| 9070     | .187 (4.7)  |
| 9071     | .250 (6.4)  |
| 9072     | .375 (9.5)  |
| 9073     | .500 (12.7) |
| 9074     | .625 (15.9) |

Material: Nylon 6/6, UL Rated 94V-0

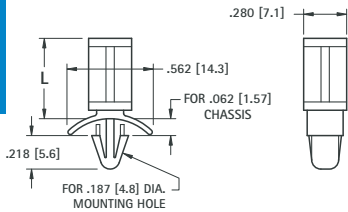
### PC SPACER SUPPORTS

- One end locks into chassis • Other end supports the PC Board
- Ideal for mid supports of large boards
- Simplifies assembly for multiple support applications • Reduces the amount of holes required in PC board

#### STURDY SUPPORT



- One end permanently attaches to .062 (1.57) chassis
- Accommodates varying board thicknesses
- Sturdy support due to large contact area



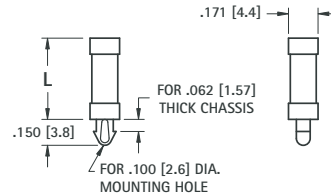
| CAT. NO. | L LENGTH    |
|----------|-------------|
| 8823     | .187 (4.7)  |
| 8823     | .250 (6.4)  |
| 8824     | .375 (9.5)  |
| 8825     | .500 (12.7) |
| 8826     | .625 (15.9) |
| 8827     | .750 (19.1) |
| 8828     | .875 (22.2) |

Material: Nylon 6/6, UL Rated 94V-0

#### SLIMLINE SUPPORT



- One end permanently attaches to .062 (1.57) chassis
- Low protrusion under chassis
- Small diameter frees up space on PC board



| CAT. NO. | L LENGTH    |
|----------|-------------|
| 9055     | .125 (3.2)  |
| 9056     | .187 (4.7)  |
| 9057     | .250 (6.4)  |
| 9058     | .375 (9.5)  |
| 9059     | .500 (12.7) |
| 9060     | .625 (15.9) |

Material: Nylon 6/6, UL Rated 94V-0

### REVERSE CHASSIS MOUNT SUPPORTS

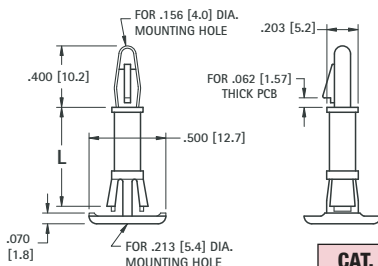
- Permanently attaches to .059 (1.51) - .065 (1.65) thick case from outside
- Provides flat clean cosmetic appearance • Ideal for low clearance applications or for mounting directly to case walls

.156 (4.0)

#### LOCK-IN RELEASE



- End locks onto .062 (1.57) PC board
- Board is positively locked until manually released
- Board is easily releasable for repairs or upgrades



| CAT. NO. | L LENGTH    |
|----------|-------------|
| 9061     | .250 (6.4)  |
| 9062     | .375 (9.5)  |
| 9063     | .500 (12.7) |
| 9064     | .625 (15.9) |

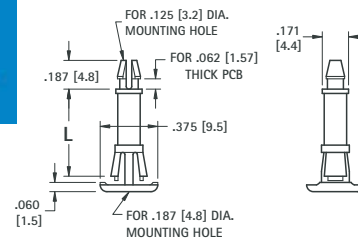
Material: Nylon 6/6, UL Rated 94V-0

.125 (3.2)

#### SLIMLINE LOCK-IN



- End permanently attaches to .062 (1.57) PC board
- Small footprint frees up PC board space



| CAT. NO. | L LENGTH    |
|----------|-------------|
| 9065     | .250 (6.4)  |
| 9066     | .375 (9.5)  |
| 9067     | .500 (12.7) |
| 9068     | .625 (15.9) |

Material: Nylon 6/6, UL Rated 94V-0