

# CTSPMA3012F Series

From .47 $\mu$ H to 4.7 $\mu$ H

## SPECIFICATIONS

Parts are available in  $\pm 20\%$  inductance tolerance only

Part Number	Inductance ( $\mu$ H)	L Test Condition	DCR Max. (m $\Omega$ )	Isat Max. (A)	Irms Max. (A)
CTSPMA3012F-R47M	0.47	100KHz, 1V	17.8	7.2	5.9
CTSPMA3012F-R68M	0.68	100KHz, 1V	24.8	5.2	5.0
CTSPMA3012F-1R0M	1.00	100KHz, 1V	34.0	4.4	4.2
CTSPMA3012F-1R5M	1.50	100KHz, 1V	58.0	3.7	3.2
CTSPMA3012F-2R2M	2.20	100KHz, 1V	74.0	3.1	2.7
CTSPMA3012F-3R3M	3.30	100KHz, 1V	129.0	2.6	2.1
CTSPMA3012F-4R7M	4.70	100KHz, 1V	210.0	2.1	1.6



## PHYSICAL DIMENSIONS

Size	A	B	C	D	E	F
mm	3.4 $\pm$ 0.2	3.1 $\pm$ 0.2	3.4	1.2	1.25	1.25
inches	0.13 $\pm$ 0.008	0.12 $\pm$ 0.008	0.13	0.047	0.49	0.49
Size	G	H	I	J	K	
mm	0.8	0.95 $\pm$ 0.1	1.5	0.75 $\pm$ 0.1	1.6	
inches	0.31	0.037 $\pm$ 0.004	0.06	0.029 $\pm$ 0.004	0.06	

## CHARACTERISTICS

**Description:** SMD (shielded) Power Inductors

**Applications:** Smart phones, Notebook PC's, Tablets, HDD's, Servers, VRM's, Compact power supply modules, etc.

**Saturation Rated Current (Isat):** The DC current when the when the inductance becomes 30% lower than its initial value. (Ta=25°C)

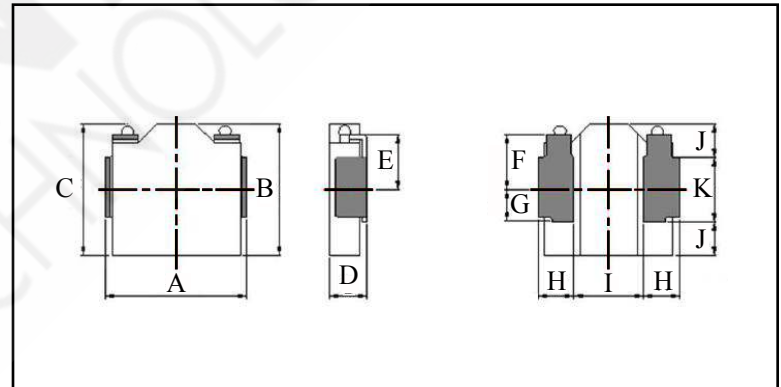
**Temperature Rise Current (Irms):** The actual current when temperature of coil becomes  $\Delta T 40^\circ\text{C}$ . (Ta=25°C)

**Operating Temperature Range:** -55°C to 155°C

**Markings:** Inductance Code

**Miscellaneous:** RoHS compliant

**Samples available. See website for ordering information.**



## PAD LAYOUT

UNIT: mm

