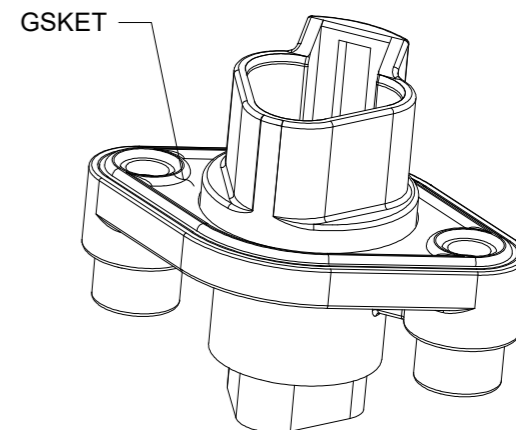
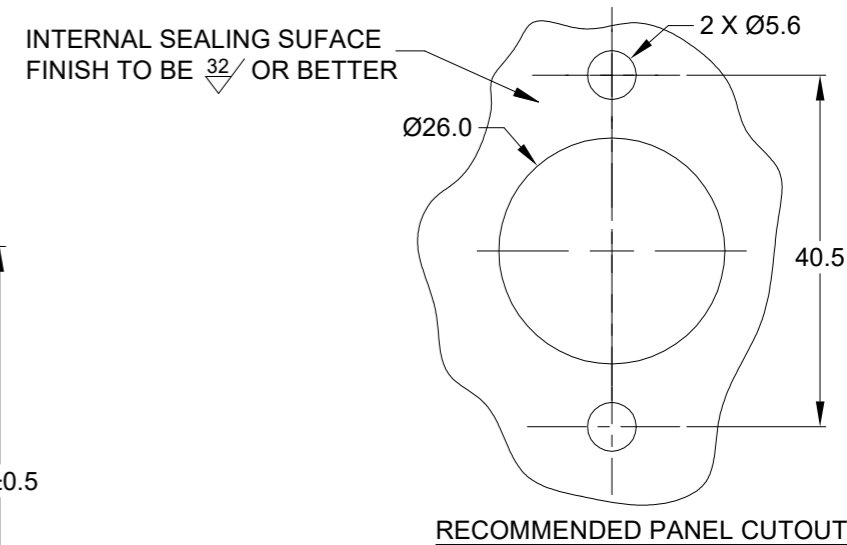
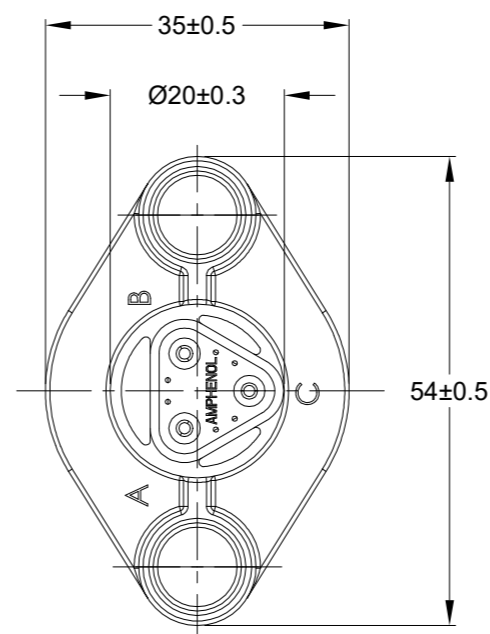
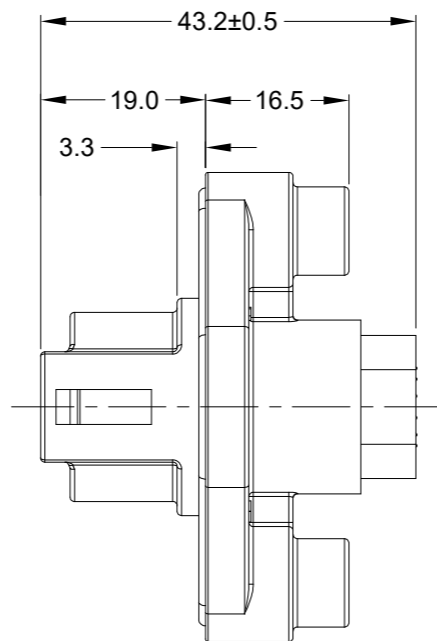
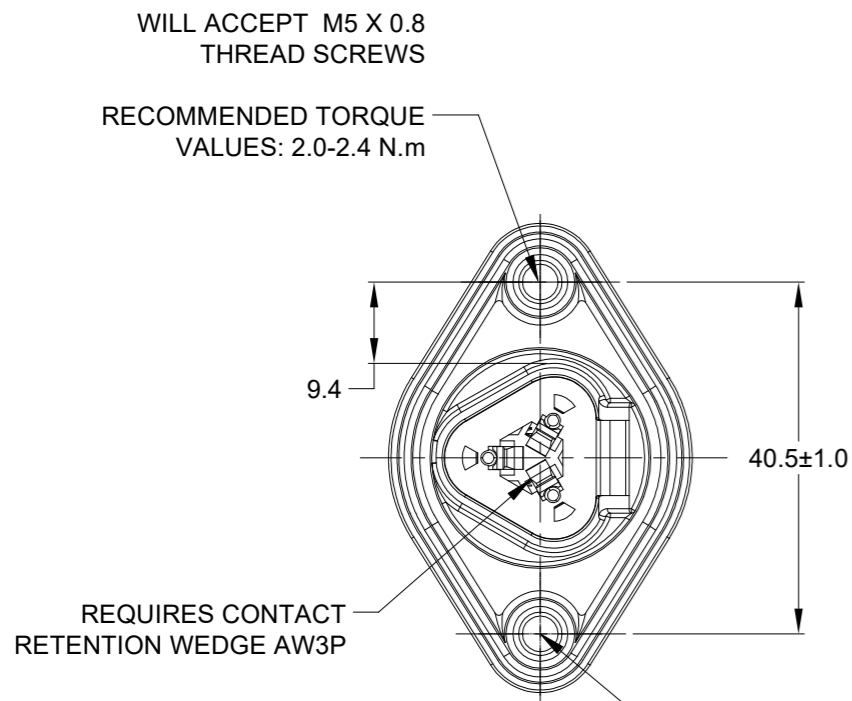
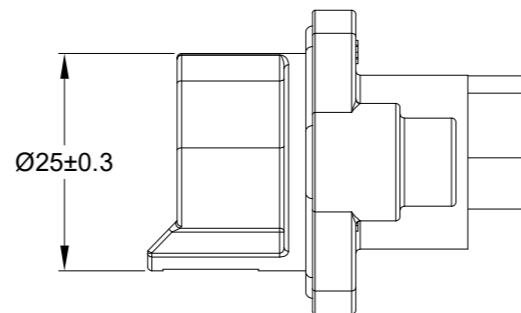


REVISIONS					
REV	ECO	DESCRIPTION	DATE	BY	APPR
A3	-	RELEASE NEW DRAWING FORMAT	11FEB14	ORION	-
A4	-	ADD RECOMMED TORQUE VALUE	01APR15	ORION	TOMMY
A5	-	ADD OTHER COLOR	10AUG18	ORION	TOMMY
A6	-	MODIFY DIMENSIONS	26SEP19	BROOK	TOMMY
A7	-	MODIFY DIMENSIONS	28/MAR/23	MILO	TOMMY

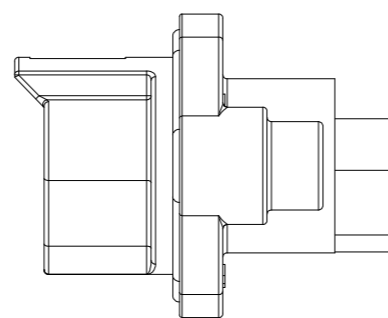


NOTES: UNLESS OTHERWISE SPECIFIED

- MATERIAL:  
HOUSING: THERMOPLASTIC;  
SEAL: SILICONE RUBBER
- MODIFICATIONS: FLANGE
- SPECIFICATIONS:  
3.1 CURRENT RATING: 13 AMPS  
3.2 OPERATING TEMPERATURE: -55°C TO +125°C  
3.3 DIELECTRIC WITHSTANDING VOLTAGE: LESS THAN 2 MILLIAMPS CURRENT LEAKAGE @ 1500 VOLTS AC.  
3.4 INSULATION RESISTANCE: 1000 MEGOHMS MIN @ 25°C.  
3.5 MOISTURE RESISTANCE:  
IP68(IM OF WATER FOR A PERIOD OF 24 HOURS, MATED CONDITION);  
IP69K(MATED CONDITION).  
3.6 MATING CYCLE DURABILITY: 100 CYCLES  
3.7 RoHS COMPLIANT
- MATING PART: AT06-3S\* PLUG  
(\* = MODIFICATIONS )
- ALL DIMENSIONS ARE FOR REFERENCE USE ONLY.

THREADED INSERT  
M5 x 0.8mm  
9.40mm DEEP 2X

PART NUMBER CHART	
COLOR	PART NUMBER
GREY	AT04-3P-PM05
BLACK	AT04-3P-PM05BLK
BLUE	AT04-3P-PM05BLU
BROWN	AT04-3P-PM05BRN
GREEN	AT04-3P-PM05GRN
RED	AT04-3P-PM05RED
WHITE	AT04-3P-PM05WHT
YELLOW	AT04-3P-PM05YEL



6 CONTACT SIZE AND REAR SEAL WIRE RANGE:

CONTACT SIZE	MIN. INSUL O.D.	MAX. INSUL O.D.	TYPICAL WIRE RANGE
16	2.24 mm (.088 in)	3.68 mm (.145 in)	14 - 20 AWG

QUANTITY	SEE PART NUMBER CHART	DESCRIPTION	ITEM

MATERIALS LIST			
UNLESS OTHERWISE SPECIFIED		SIGNATURES	DATE
1) All dimensions are in metric(mm). 2) Tolerances are as follows: 1 PL DEC ±0.30 2 PL DEC ±0.15 3 PL DEC ±0.08		DRAWN: MILO DONG	28/MAR/23
3) Note reference = $\triangle$		CHECKED: SULLEN ZHANG	29/MAR/23
MATERIAL SPECIFICATIONS:		ENGINEER:	
WEIGHT: 22.43g		APPROVAL: TOMMY XIE	30/MAR/23
PROCESS SPECIFICATIONS:		CUSTOMER:	
NEXT ASSY:		THIS DRAWING IS SUPPLIED FOR INFORMATION ONLY. DESIGN FEATURES, SPECIFICATIONS AND PERFORMANCE DATA SHOWN HEREON ARE THE PROPERTY OF THE AMPHENOL CORPORATION. NO RIGHTS OF REPRODUCTION ARE IMPLIED. ALL DIMENSIONS ARE SUBJECT TO NORMAL MANUFACTURING VARIATIONS.	

<b>Amphenol</b>			
Sine Systems - www.amphenol-sine.com 44724 Morley Drive Clinton Township, MI 48036			
RECEPTACLE, AT, 3 PIN, AT SERIES, W/ FLANGE, GASKET			
SIZE	TYPE	DWG NO:	REVISION
B	C-	AT04-3P-PM05XXX	A7
SCALE:	NONE		SHEET 1 OF 1

TITLE: RECEPTACLE, AT, 3 PIN, AT SERIES, W/ FLANGE, GASKET  
DWG NO: AT04-3P-PM05XXX  
REV: A7  
SH: 1  
OF: 1