

Interface module - FLKM-D 9 SUB/S/LA - 2281623

Please be informed that the data shown in this PDF Document is generated from our Online Catalog. Please find the complete data in the user's documentation. Our General Terms of Use for Downloads are valid (<http://phoenixcontact.com/download>)




VARIOFACE module, with screw connection and D-Subminiature pin strip, for mounting on NS 35/7.5 or NS 32, with light indicator, 9-pos.

The illustration shows version FLKM-D37 SUB/B/LA



Key commercial data

Packing unit	1 pc
GTIN	 4 017918 054878
Weight per Piece (excluding packing)	87.55 GRM
Custom tariff number	85369010
Country of origin	Germany

Technical data

Dimensions

Width	45 mm
Height	77 mm
Depth	58.5 mm

Ambient conditions

Ambient temperature (operation)	-20 °C ... 50 °C
Ambient temperature (storage/transport)	-20 °C ... 70 °C

General

Nominal voltage U_N	24 V DC
Max. current carrying capacity per branch	2.5 A
Number of positions	9

Interface module - FLKM-D 9 SUB/S/LA - 2281623

Technical data

General

Status display	LED
Test voltage	500 V (50 Hz, 1 min.)
Mounting position	any
Standards/regulations	IEC 60664
	DIN EN 50178
	IEC 62103
Pollution degree	2
Surge voltage category	II

Connection data for connection 1

Connection name	PCB connection
Connection in acc. with standard	IEC / EN
Connection method	Screw connection
Conductor cross section solid min.	0.2 mm ²
Conductor cross section solid max.	4 mm ²
Conductor cross section stranded min.	0.2 mm ²
Conductor cross section stranded max.	2.5 mm ²
Conductor cross section AWG/kcmil min.	24
Conductor cross section AWG/kcmil max	12
Stripping length	8 mm
Screw thread	M3

Classifications

eCl@ss

eCl@ss 4.0	27250313
eCl@ss 4.1	27250313
eCl@ss 5.0	27250313
eCl@ss 5.1	27250313
eCl@ss 6.0	27242608
eCl@ss 7.0	27242608

ETIM

ETIM 2.0	EC001434
ETIM 3.0	EC001604
ETIM 4.0	EC001604
ETIM 5.0	EC001604

Interface module - FLKM-D 9 SUB/S/LA - 2281623

Classifications

UNSPSC

UNSPSC 6.01	30211824
UNSPSC 7.0901	39121421
UNSPSC 11	39121421
UNSPSC 12.01	39121421
UNSPSC 13.2	39121421

Approvals

Approvals

Approvals

GOST

Ex Approvals

Approvals submitted

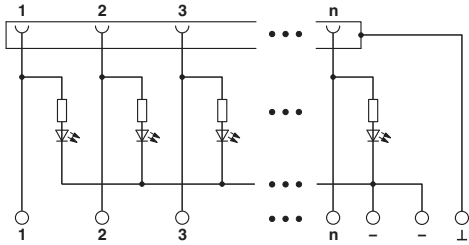
Approval details



Drawings

Interface module - FLKM-D 9 SUB/S/LA - 2281623

Circuit diagram



Schematic diagram

