

IN485UNI001I000
Universal IR RS485 interface

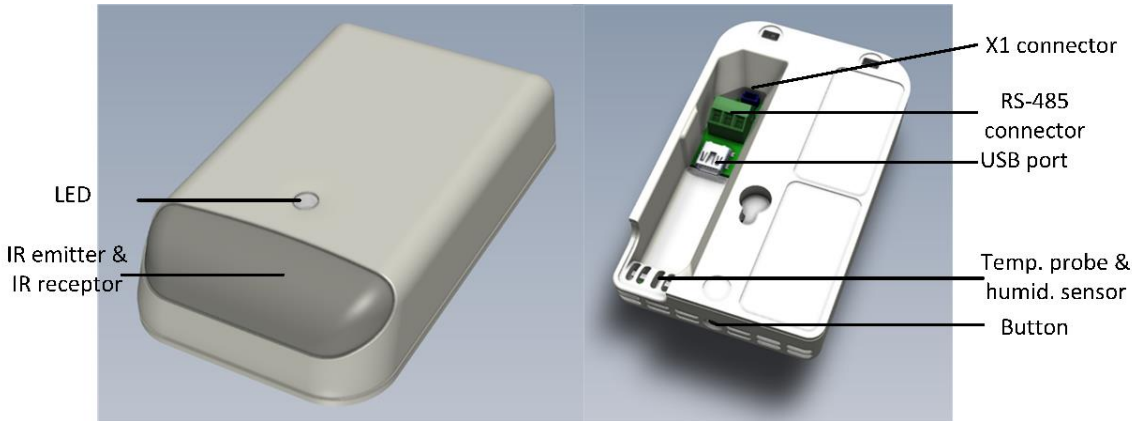
Installation Sheet rev.2.0
© HMS Industrial Networks S.L.U.

Owner's Record

The serial number is located at the rear of the gateway. Record this information in the space provided below. Refer to it whenever you contact upon your gateway dealer or support team regarding this product.

Serial No. _____

PRODUCT OVERVIEW



SAFETY INSTRUCTIONS

⚠ WARNING - Follow this safety and installation instructions carefully. Improper work may lead to serious harm to your health and may seriously damage the Intesis gateway and/or any other equipment connected to it.

This Intesis interface must be installed by qualified personnel, following all the safety instructions given here and in accordance with local regulations for electrical equipment. The Intesis gateway cannot be installed outdoors or exposed to direct solar radiation, moisture or dust.

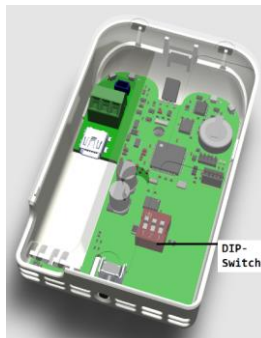
Before manipulating the indoor AC unit, be sure it is completely disconnected from mains power.

DIP-switch block

To access the built-in DIP-switch block, open the enclosure by releasing the back lid. Gently bend both frontal click-fit tabs by inserting a plane tool tip (size <5 mm). This operation must be performed by qualified personnel only

DIP-Switch	Description
	EIA-485 bus without termination resistor
	Internal termination resistor of 120 Ω connected to EIA-485 bus. (Default value)
	No BUS polarization.
	BUS polarization active (default value)

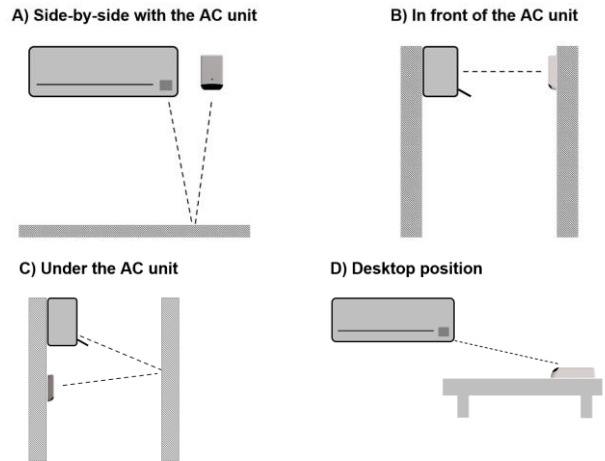
Fig. Built-in DIP-switch block



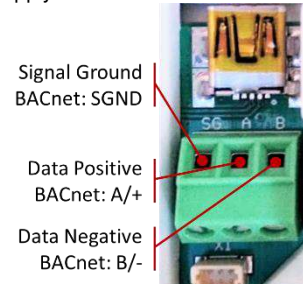
INSTALLATION

Intesis IN485UNI001I000 is intended for wall / desktop mount.

- Check device emplacement using your Air Conditioner IR remote controller. Make sure that you can control the AC unit properly with the IR remote controller from that location. Different emplacements are acceptable, as shown in figures below



- Connect the RS-485 bus cable to built-in RS-485 3-pin screw terminal block. Notice terminals A (+), B (-) and SG (ground)
- Connect supplied USB cable to USB built-in connector (mini B type), for power supply and communication with config tool



TECHNICAL SPECIFICATIONS

Enclosure	Plastic, type PC (UL 94 V-0) Net dimensions (dxwxh): 93 x 58.5 x 21 mm / 3.7" x 2.3" x 0.83" Color: Light Grey. NCS S 1002-B	Operating Temperature	0°C to +60°C
Weight	55 g.	Storage Temperature	-20°C to +85°C
Mounting	Wall On a clean surface (desktop...)	Operating Humidity	5% to 95% RH, non-condensing
Terminal Wiring	For terminal: solid wires or stranded wires (twisted or with ferrule) 1 core: 0.25mm ² ... 1mm ² 2 cores: 0.25mm ² ... 0,75mm ² 3 cores: 0.25mm ² ... 0,75mm ²	Storage Humidity	<95% RH, non-condensing
EIA-485	1 x EIA485 Plug-in screw terminal block (3 poles): Signal Ground: SG / SGND Data positive: A/+ Data negative: B/-	Protection	IP20 (IEC60529)
USB port	1 x Standard mini USB, 5VDC. Consumption max. 400mA	LED indicators	1 x external LED - Operational status
Buttons	1 x button		



This marking on the product, accessories, packaging or literature (manual) indicates that the product contains electronic parts and they must be properly disposed of by following the instructions at <https://intesis.com/weee-regulation>