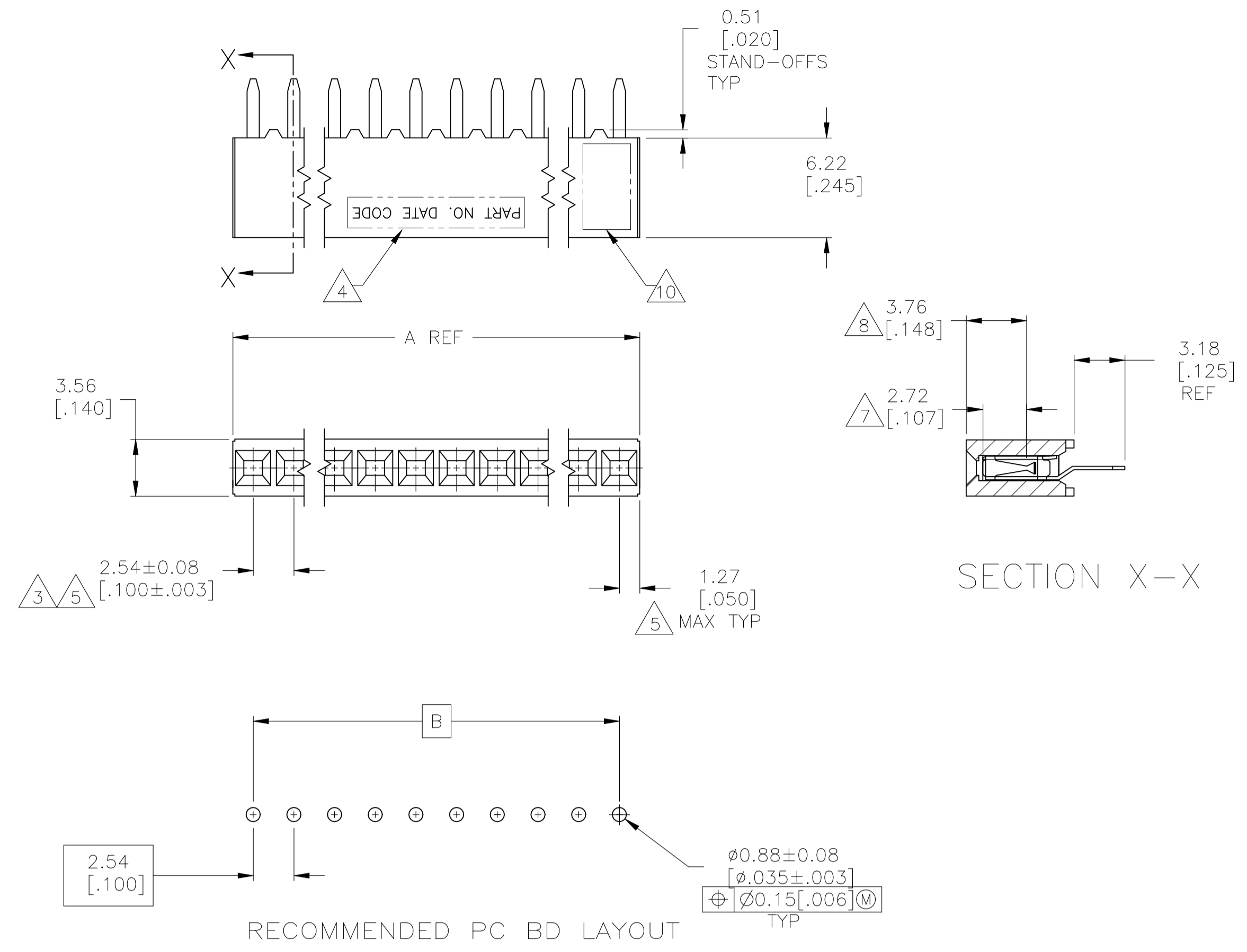


REVISIONS					
P	LTR	DESCRIPTION	DATE	DRN	APVD
P		HOUSING RESIN CHANGED	27OCT2021	SCB	KJK



- 1 HOUSING: FLAME RETARDANT, GLASS FILLED, POLYESTER, COLOR: BLACK. CONTACT: PHOSPHOR BRONZE
- 2 CONTACT: DUPLEX PLATED 0.76µm[.000030] MIN GOLD IN CONTACT AREA, 3.81-7.62µm[.000150-.000300] BRIGHT TIN-LEAD ON LEADS ALL OVER 1.27µm[.000050] MIN NICKEL
- 3 THESE DIMENSIONS PERTAIN TO CAVITY CENTERLINES ONLY - NOT TO CONTACT LOCATIONS
- 4 PART NUMBER AND DATE CODE ARE MARKED IN APPROXIMATE LOCATION SHOWN, EITHER SIDE.
- 5 TOLERANCE IS NON-CUMULATIVE.
- 6 2 POSITION DATE CODE IS MARKED OPPOSITE SIDE OF TE CONNECTIVITY LOGO.
- 7 POINT-OF-MEASUREMENT DIMENSION FOR PLATING THICKNESS (INSIDE CONTACT BEAM).
- 8 POINT-OF-CONTACT DIMENSION.
- 9 NO PART NUMBER MARKING REQUIRED FOR THIS PART.
- 10 TE LOGO AND CSA LOGO ARE MOLDED INTO HOUSING.
- 11 CONTACT: DUPLEX PLATED 0.76µm[.000030] MIN GOLD IN CONTACT AREA, 3.81-7.62µm[.000150-.000300] MATTE TIN ON LEADS ALL OVER 1.27µm[.000050] MIN NICKEL
- 12 ROHS 2002/95/EC COMPLIANT.

FINISH	B	A	NO OF POSN	PART NUMBER
	2.54 [.100]	5.08 [.200]	2	8-535541-9
	99.06 [3.900]	101.60 [4.000]	40	8-535541-8
	96.52 [3.800]	99.06 [3.900]	39	8-535541-7
	93.98 [3.700]	96.52 [3.800]	38	8-535541-6
	91.44 [3.600]	93.98 [3.700]	37	8-535541-5
	88.90 [3.500]	91.44 [3.600]	36	8-535541-4
	86.36 [3.400]	88.90 [3.500]	35	8-535541-3
	83.82 [3.300]	86.36 [3.400]	34	8-535541-2
	81.28 [3.200]	83.82 [3.300]	33	8-535541-1
	78.74 [3.100]	81.28 [3.200]	32	8-535541-0
	76.20 [3.000]	78.74 [3.100]	31	7-535541-9
	73.66 [2.900]	76.20 [3.000]	30	7-535541-8
	71.12 [2.800]	73.66 [2.900]	29	7-535541-7
	68.58 [2.700]	71.12 [2.800]	28	7-535541-6
	66.04 [2.600]	68.58 [2.700]	27	7-535541-5
	63.50 [2.500]	66.04 [2.600]	26	7-535541-4
	60.96 [2.400]	63.50 [2.500]	25	7-535541-3
	58.42 [2.300]	60.96 [2.400]	24	7-535541-2
	55.88 [2.200]	58.42 [2.300]	23	7-535541-1
	53.34 [2.100]	55.88 [2.200]	22	7-535541-0
	50.80 [2.000]	53.34 [2.100]	21	6-535541-9
	48.26 [1.900]	50.80 [2.000]	20	6-535541-8
	45.72 [1.800]	48.26 [1.900]	19	6-535541-7
	43.18 [1.700]	45.72 [1.800]	18	6-535541-6
	40.64 [1.600]	43.18 [1.700]	17	6-535541-5
	38.10 [1.500]	40.64 [1.600]	16	6-535541-4
	35.56 [1.400]	38.10 [1.500]	15	6-535541-3
	33.02 [1.300]	35.56 [1.400]	14	6-535541-2
	30.48 [1.200]	33.02 [1.300]	13	6-535541-1
	27.94 [1.100]	30.48 [1.200]	12	6-535541-0
	25.40 [1.000]	27.94 [1.100]	11	5-535541-9
	22.86 [.900]	25.40 [1.000]	10	5-535541-8
	20.32 [.800]	22.86 [.900]	9	5-535541-7
	17.78 [.700]	20.32 [.800]	8	5-535541-6
	15.24 [.600]	17.78 [.700]	7	5-535541-5
	12.70 [.500]	15.24 [.600]	6	5-535541-4
	10.16 [.400]	12.70 [.500]	5	5-535541-3
	7.62 [.300]	10.16 [.400]	4	5-535541-2
	5.08 [.200]	7.62 [.300]	3	5-535541-1

	2.54 [.100]	5.08 [.200]	2	3-535541-9
	99.06 [3.900]	101.60 [4.000]	40	3-535541-8
	96.52 [3.800]	99.06 [3.900]	39	3-535541-7
	93.98 [3.700]	96.52 [3.800]	38	3-535541-6
	91.44 [3.600]	93.98 [3.700]	37	3-535541-5
	88.90 [3.500]	91.44 [3.600]	36	3-535541-4
	86.36 [3.400]	88.90 [3.500]	35	3-535541-3
	83.82 [3.300]	86.36 [3.400]	34	3-535541-2
	81.28 [3.200]	83.82 [3.300]	33	3-535541-1
	78.74 [3.100]	81.28 [3.200]	32	3-535541-0
	76.20 [3.000]	78.74 [3.100]	31	2-535541-9
	73.66 [2.900]	76.20 [3.000]	30	2-535541-8
	71.12 [2.800]	73.66 [2.900]	29	2-535541-7
	68.58 [2.700]	71.12 [2.800]	28	2-535541-6
	66.04 [2.600]	68.58 [2.700]	27	2-535541-5
	63.50 [2.500]	66.04 [2.600]	26	2-535541-4
	60.96 [2.400]	63.50 [2.500]	25	2-535541-3
	58.42 [2.300]	60.96 [2.400]	24	2-535541-2
	55.88 [2.200]	58.42 [2.300]	23	2-535541-1
	53.34 [2.100]	55.88 [2.200]	22	2-535541-0
	50.80 [2.000]	53.34 [2.100]	21	1-535541-9
	48.26 [1.900]	50.80 [2.000]	20	1-535541-8
	45.72 [1.800]	48.26 [1.900]	19	1-535541-7
	43.18 [1.700]	45.72 [1.800]	18	1-535541-6
	40.64 [1.600]	43.18 [1.700]	17	1-535541-5
	38.10 [1.500]	40.64 [1.600]	16	1-535541-4
	35.56 [1.400]	38.10 [1.500]	15	1-535541-3
	33.02 [1.300]	35.56 [1.400]	14	1-535541-2
	30.48 [1.200]	33.02 [1.300]	13	1-535541-1
	27.94 [1.100]	30.48 [1.200]	12	1-535541-0
	25.40 [1.000]	27.94 [1.100]	11	535541-9
	22.86 [.900]	25.40 [1.000]	10	535541-8
	20.32 [.800]	22.86 [.900]	9	535541-7
	17.78 [.700]	20.32 [.800]	8	535541-6
	15.24 [.600]	17.78 [.700]	7	535541-5
	12.70 [.500]	15.24 [.600]	6	535541-4
	10.16 [.400]	12.70 [.500]	5	535541-3
	7.62 [.300]	10.16 [.400]	4	535541-2
	5.08 [.200]	7.62 [.300]	3	535541-1

THIS DRAWING IS A CONTROLLED DOCUMENT.		DIN M. BINNER OSNOV2		TE Connectivity RECPT ASSY, MOD IV, SINGLE ROW, .100CL, VERTICAL BOARD MOUNT, CLOSED, TOP ENTRY, SHORT PNT. OF CONTACT	
DIMENSIONS: mm [INCHES]		TOLERANCES UNLESS OTHERWISE SPECIFIED:			
0. PLC ± - 1. PLC ± - 2. PLC ± 0.25[.010] 3. PLC ± 0.13[.005] 4. PLC ± - ANGLES ± -		APVD J. JOLSON OSNOV2 PRODUCT SPEC 108-25022 APPLICATION SPEC 114-25018		NAME SIZE CASE CODE DRAWING NO. A1 00779C=535541 RESTRICTED TO	
MATERIAL FINISH		WEIGHT		CUSTOMER DRAWING	
		SCALE 4:1		SHEET 1 of 1 REV P	