

THIS DRAWING IS UNPUBLISHED.

RELEASED FOR PUBLICATION

ALL RIGHTS RESERVED.

LOC H

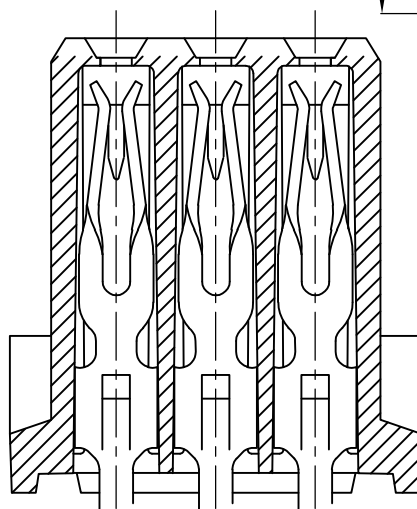
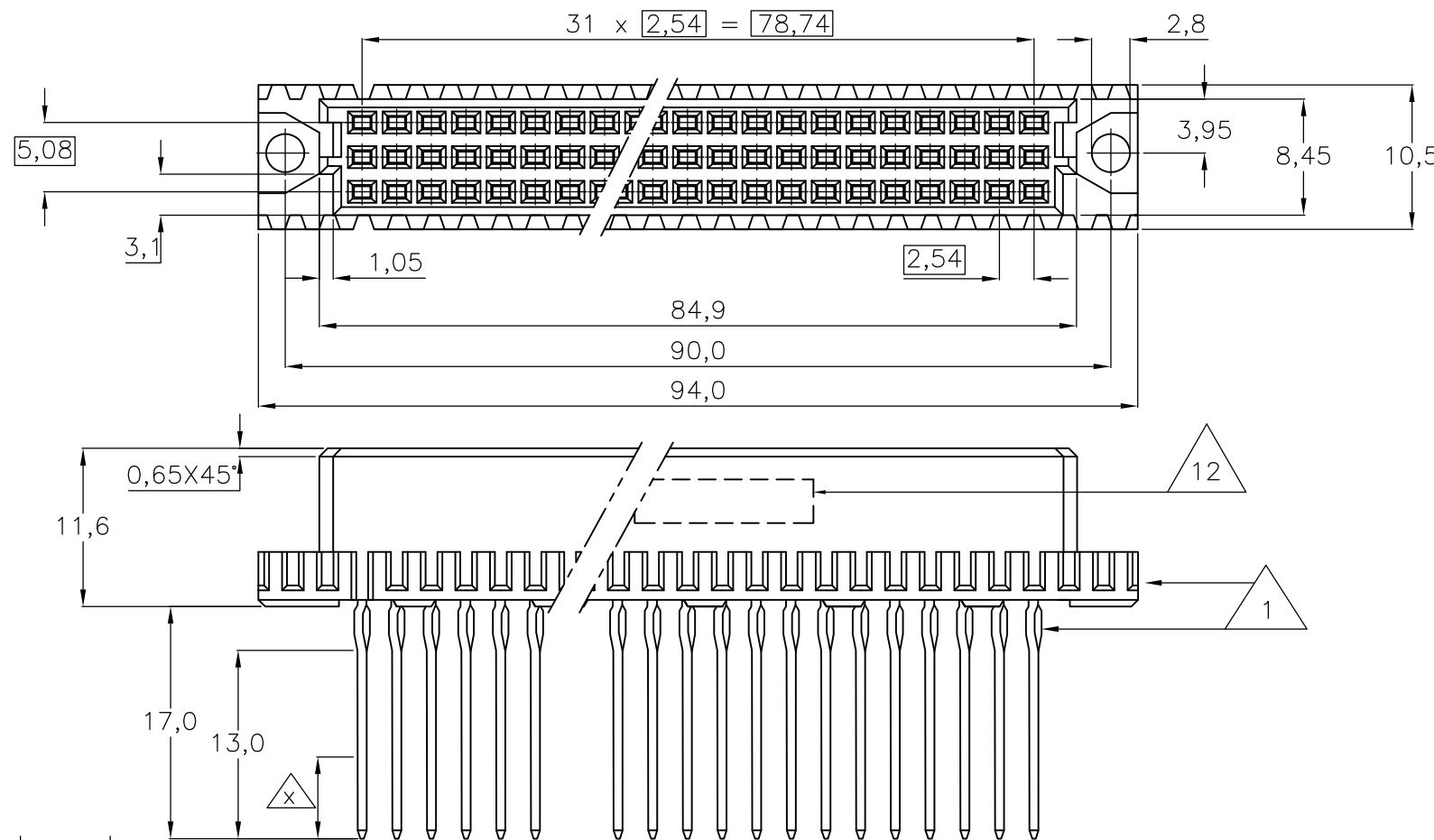
DIST -

REVISIONS

P	LTR	DESCRIPTION	DATE	DWN	APVD
	K	EH00-0520-96	03-02-97	JG	-
	N	ECR-07-020965	26-08-08	AEG	MKO
	N1	ECR-10-024793	14OCT11	RK	MKO

NOTES:

- 1 CONNECTOR MEETS THE REQUIREMENTS ACC. DIN 41612 AND DIN 41611, PART 2 AND 5.
- 2 MATERIAL CONTACT: PHOSPHORBRONZE. MATERIAL HOUSING: GLASSFILLED THERM. POLYESTER.
- 3 AT CONTACTAREA 1,25µm GOLD OVER 1,25µm NICKEL. REMAINDER 1,25µm TIN.
- 4 AT CONTACTAREA 0,8µm GOLD OVER 1,25µm NICKEL. REMAINDER 1,25µm TIN.
- 5 AT CONTACTAREA 2,0µm GOLD OVER 1,25µm NICKEL. REMAINDER 1,25µm TIN.
- 6 AT CONTACTAREA 0,4µm GOLD OVER 1,25µm NICKEL. REMAINDER 1,25µm TIN.
- 7 AT CONTACTAREA AND AREA  $\Delta$  1,25µm GOLD OVER 1,25µm NICKEL. AT ACTION PIN AREA 1,25µm TIN.
- 8 AT CONTACTAREA AND AREA  $\Delta$  0,8µm GOLD OVER 1,25µm NICKEL. AT ACTION PIN AREA 1,25µm TIN.
- 9 AT CONTACTAREA AND AREA  $\Delta$  2,0µm GOLD OVER 1,25µm NICKEL. AT ACTION PIN AREA 1,25µm TIN.
- 10 AT CONTACTAREA AND AREA  $\Delta$  0,4µm GOLD OVER 1,25µm NICKEL. AT ACTION PIN AREA 1,25µm TIN.
- 11 AT CONTACTAREA 0,8µm GOLD AND 0,4µm GOLD AT AREA  $\Delta$  OVER 1,25µm NICKEL. AT ACTION PIN AREA 1,25µm TIN.
- 12 CONNECTOR PRINTED WITH PARTNUMBER AND DATECODE ON OUTSIDE OF MATING AREA OF ROW c.



P.C.B. HOLE DIM. ACTION PIN	
DRILLED HOLE	: 1,15 ± 0,025 mm
FIN. HOLE	: 0,94 to 1,09 mm
AFTER REFLOW	: 0,91 to 1,09 mm
Cu-thks	: 0,025 to 0,075 mm
SnPb-thks	: 0,004 to 0,010 mm

ROW	a	b	c
POS	32	31	30
	29	28	27
	26	25	24
	23	22	21
	20	19	18
	17	16	15
	14	13	12
	11	10	9
	8	7	6
	5	4	3
	2	1	

AN ASTERISK „X” DENOTES A SIGNAL CONTACT.

OBSOLETE	$\Delta$ 11	$\Delta$ 2	8-215614-4
OBSOLETE	$\Delta$ 10	$\Delta$ 2	1-215614-8
OBSOLETE	$\Delta$ 9	$\Delta$ 2	1-215614-7
SUPERSEDED BY 1-148059-5	$\Delta$ 8	$\Delta$ 2	1-215614-4
SUPERSEDED BY 1-148059-5	$\Delta$ 7	$\Delta$ 2	1-215614-1
OBSOLETE	$\Delta$ 6	$\Delta$ 2	215614-8
OBSOLETE	$\Delta$ 5	$\Delta$ 2	215614-7
SUPERSEDED BY 5148059-5	$\Delta$ 4	$\Delta$ 2	215614-4
SUPERSEDED BY 5148059-5	$\Delta$ 3	$\Delta$ 2	215614-1
	FINISH	MATERIAL	PARTNUMBER

THIS DRAWING IS A CONTROLLED DOCUMENT.		DWN R.V.LOKVEN 19NOV86	<b>STE</b> TE Connectivity	
DIMENSIONS: mm		CHK J.GIBBELS		
TOLERANCES UNLESS OTHERWISE SPECIFIED:		APVD R.SMEETS	NAME	
0 PLC ± -		PRODUCT SPEC	96 POS FEMALE CONN. ASS'Y WITH ACTION-PIN.	
1 PLC ± -		APPLICATION SPEC	FOR 2,4-3,2mm P.C.BOARD THK'S	
2 PLC ± -		WEIGHT -	SIZE A3	CAGE CODE 00779
3 PLC ± -		CUSTOMER DRAWING	DRAWING NO C-215614	RESTRICTED TO -
4 PLC ± -			SCALE NTS	SHEET 1 OF 2
ANGLES ± -				
FINISH -				

THIS DRAWING IS UNPUBLISHED.

RELEASED FOR PUBLICATION

---

LOC

DIST

REVISIONS

© COPYRIGHT - By -

ALL RIGHTS RESERVED.

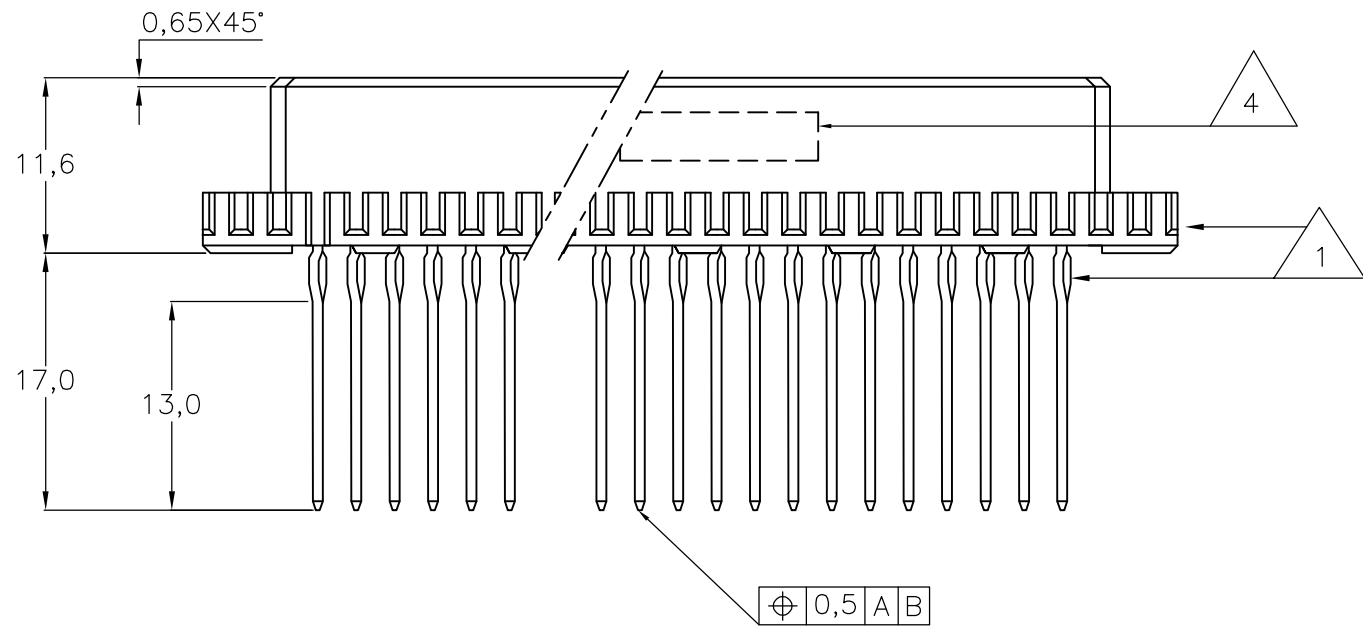
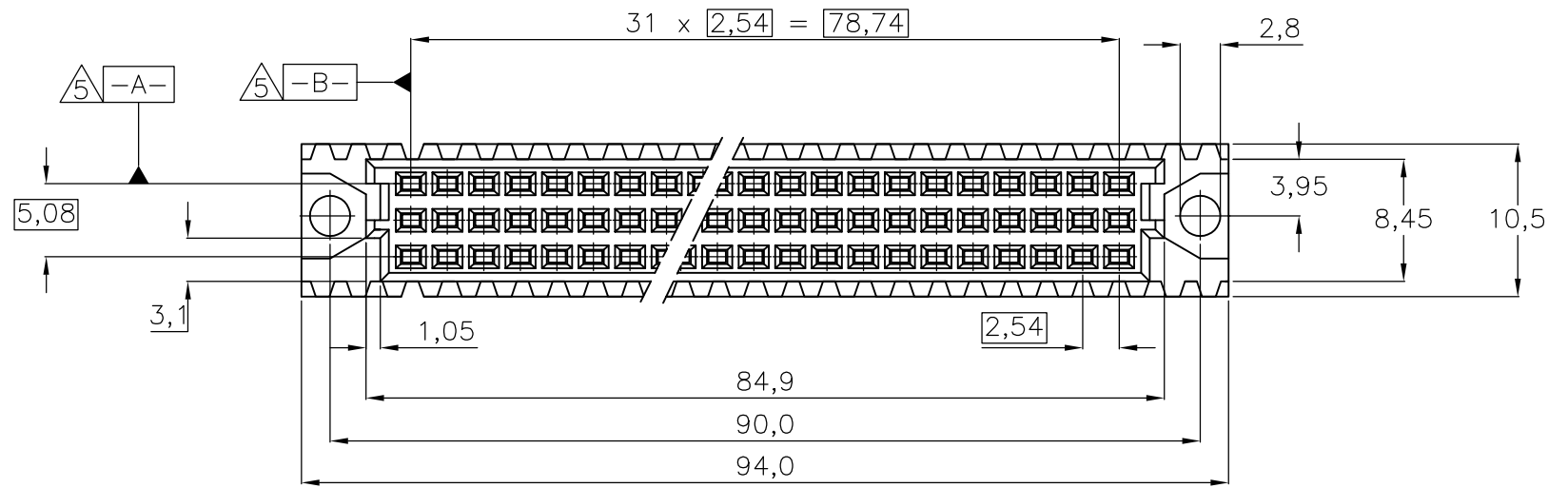
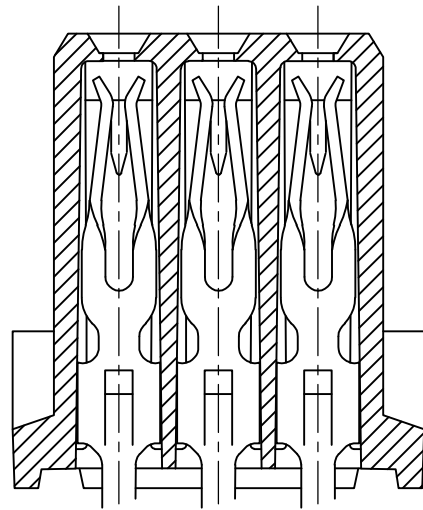
P	LTR	DESCRIPTION	DATE	DWN	APVD
-	-	SEE SHEET 1	-	-	-

NOTES:

- 1 CONNECTOR MEETS THE REQUIREMENTS ACC. DIN 41612 AND DIN 41611,PART 2 AND 5.
- 2 MATERIAL CONTACT: PHOSPHORBRONZE. MATERIAL HOUSING: GLASSFILLED THERM. POLYESTER.
- 3 AT CONTACT AREA 1,25µm GOLD OVER 1,25µm NICKEL. REMAINDER 1,25µm TIN.
- 4 CONNECTOR PRINTED WITH PARTNUMBER AND DATECODE ON OUTSIDE OF MATING AREA OF ROW c.
- 5 DATUM -A- AND -B- AT BASE OF POSTS.
- 6 SUITABLE FOR AUTO-WIRING.

P.C.B. HOLE DIM. ACTION PIN

DRILLED HOLE : 1,15 ± 0,025 mm  
 FIN. HOLE : 0,94 to 1,09 mm  
 AFTER REFLOW : 0,91 to 1,09 mm  
 Cu-thks : 0,025 to 0,075 mm  
 SnPb-thks : 0,004 to 0,010 mm



ROW	a	b	c
POS	32	31	30
	29	28	27
	26	25	24
	23	22	21
	20	19	18
	17	16	15
	14	13	12
	11	10	9
	8	7	6
	5	4	3
	2	1	*

AN ASTERISK „X” DENOTES A SIGNAL CONTACT.

SUPERSEDED BY 5148059-4

3	2	6	4-215614-1
FINISH	MATERIAL	PARTNUMBER	

THIS DRAWING IS A CONTROLLED DOCUMENT.		DWN	R.V.LOKVEN	19NOV86												
DIMENSIONS: mm		CHK	J.GIBBELS	-												
TOLERANCES UNLESS OTHERWISE SPECIFIED:		APVD	R.SMEETS	-												
<table border="1"> <tr><td>0 PLC</td><td>± -</td></tr> <tr><td>1 PLC</td><td>± -</td></tr> <tr><td>2 PLC</td><td>± -</td></tr> <tr><td>3 PLC</td><td>± -</td></tr> <tr><td>4 PLC</td><td>± -</td></tr> <tr><td>ANGLES</td><td>± -</td></tr> </table>		0 PLC	± -	1 PLC	± -	2 PLC	± -	3 PLC	± -	4 PLC	± -	ANGLES	± -	PRODUCT SPEC	NAME	
0 PLC	± -															
1 PLC	± -															
2 PLC	± -															
3 PLC	± -															
4 PLC	± -															
ANGLES	± -															
MATERIAL		APPLICATION SPEC	96 POS FEMALE CONN. ASS'Y WITH ACTION-PIN. FOR 2,4-3,2mm P.C.BOARD THK'S													
FINISH		WEIGHT	SIZE	CAGE CODE												
-		-	A3	00779												
		DRAWING NO		RESTRICTED TO												
		C-215614		-												
CUSTOMER DRAWING		SCALE	SHEET	REV												
		NTS	2 OF 2	N1												