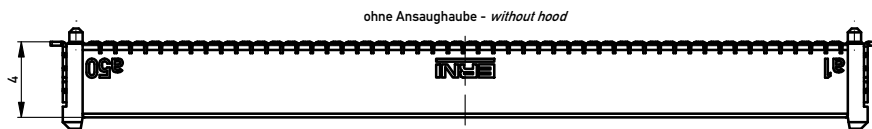
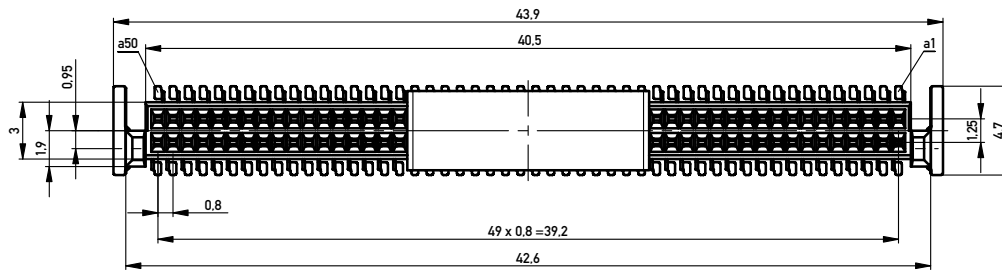
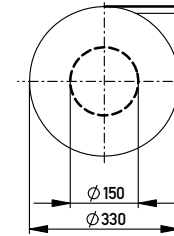
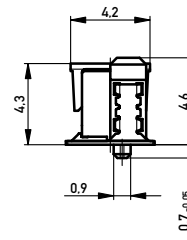
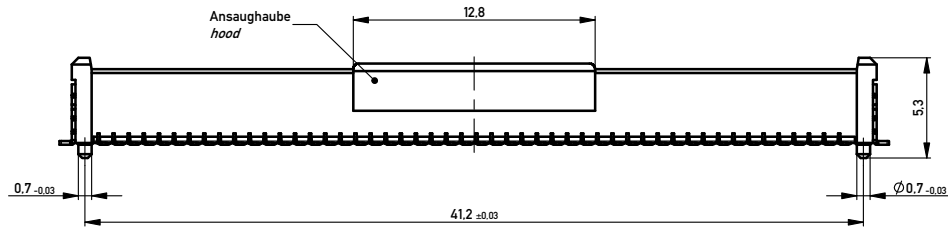
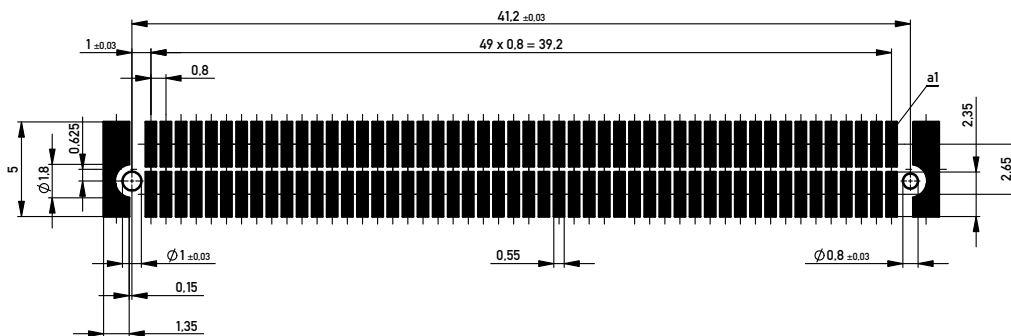


Verpackt im Gurt nach DIN IEC 60286-3  
 Tape on Reel Packaging according to DIN IEC 60286-3  
 Verpackungseinheit: 840 Stück  
 Packaging unit: 840 pcs



Leiterplatten-Layout Vorschlag für SMT  
 PCB-Layout Proposal for SMT



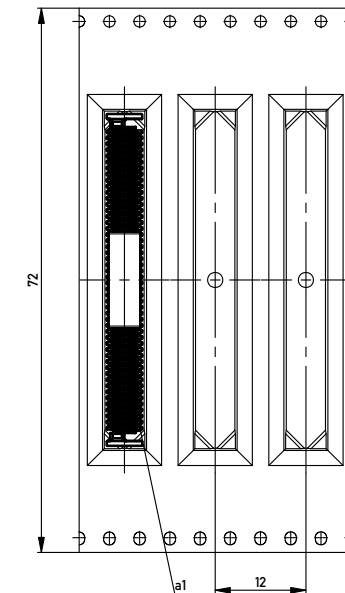
Anforderungsstufe 1  
 Performance Level 1

Kontaktbereich vergoldet  
 Mating Area gold plating

Anschlussbereich verzinkt 4-6 µm  
 Terminal Area 4-6 µm tin plating

Koplanarität der Anschlüsse ≤ 0,1 mm  
 Coplanarity Area of Termination ≤ 0.1 mm

Abspulrichtung - Reel off Direction



Information:	Tolerances	Scale 5:1	
	All Dimensions in mm		
All rights reserved. Only for Information. To ensure that this is the latest version of this drawing, please contact one of the ERNI companies before using.	Subject to modification without prior notice. Drawing will not be updated.	Designation <b>0.8 DRC-B, F 4mm, 100 polig</b> <b>0.8 DRC-B, F 4mm, 100 pin</b>	
	www.ERNI.com	<b>294009</b>	I A2
a	02.04.2015		
Index	Date	Class	DRCB

Copyright by ERNI GmbH  
 Proprietary notice pursuant to ISO 16949 to be observed