

# Versatile Motor Bracket

SKU: 62420 Weight: 25.00 Gram

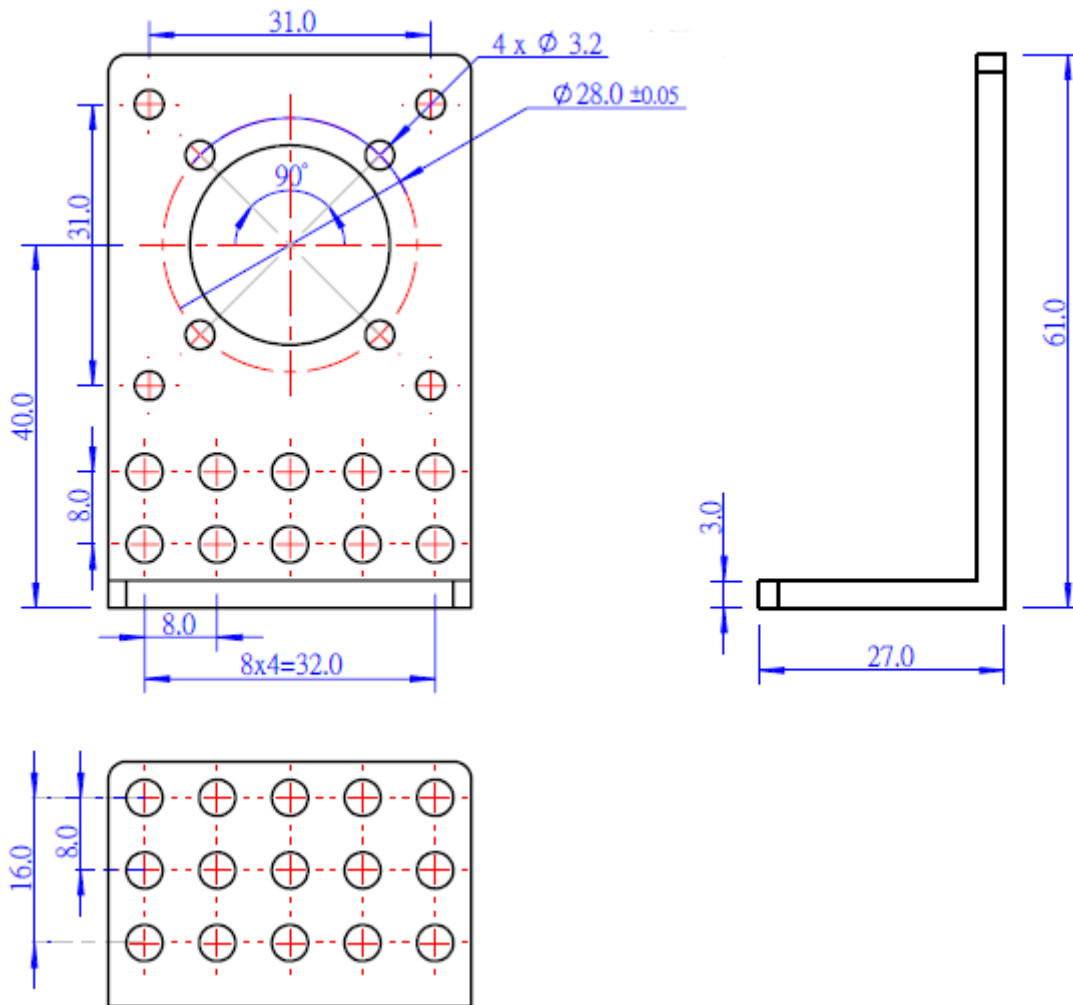
## Description:

Makeblock Versatile Motor Bracket has the more function as 42BYG Stepper Motor Bracket B. It is compatible to Makeblock 42BYG geared stepper motors and Makeblock 36 DC geared motors.

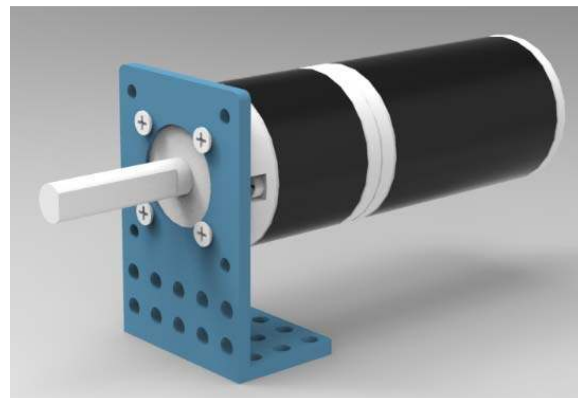
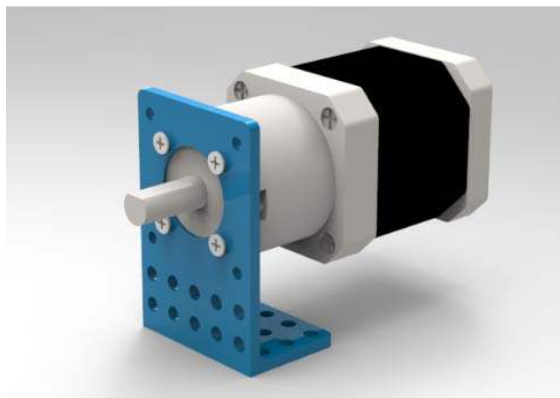
## Features :

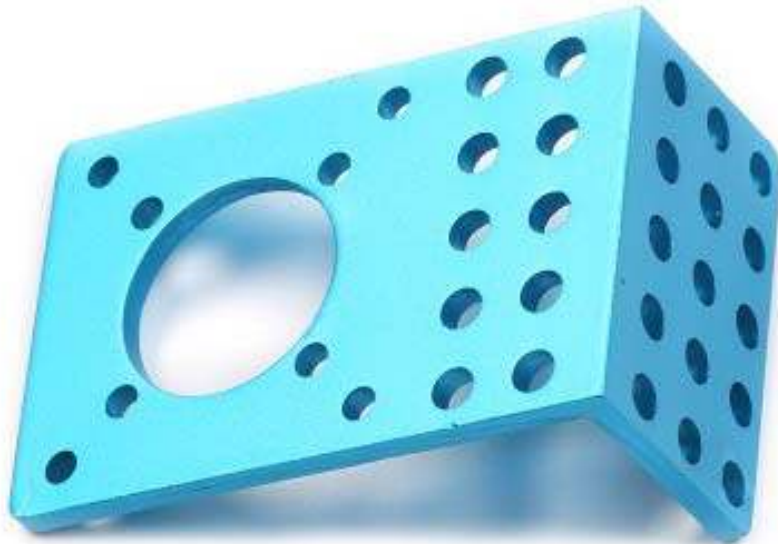
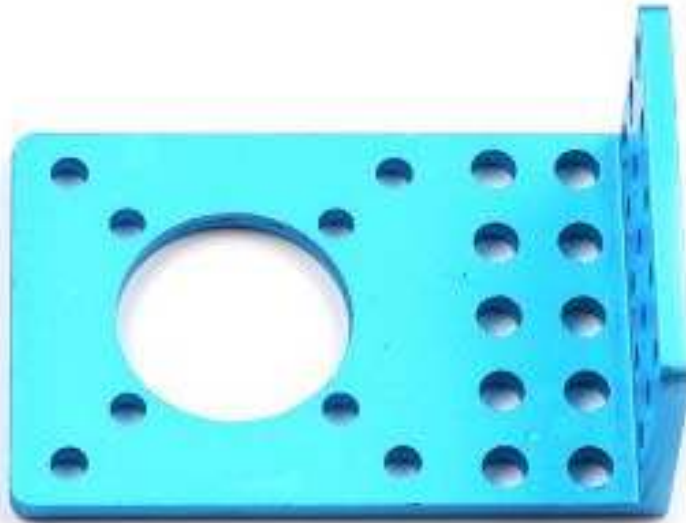
- Made from 6061 aluminum extrusion, anodized surface.
- With four taped holes for mounting your stepper motor and M4 through holes for attachment.
- 4 Screw M3x8 included.
- Size: 61x27x3mm

**SizeChart(mm):**



**Demo:**





<https://store.makeblock.com/versatile-motor-bracket/2-26-19>