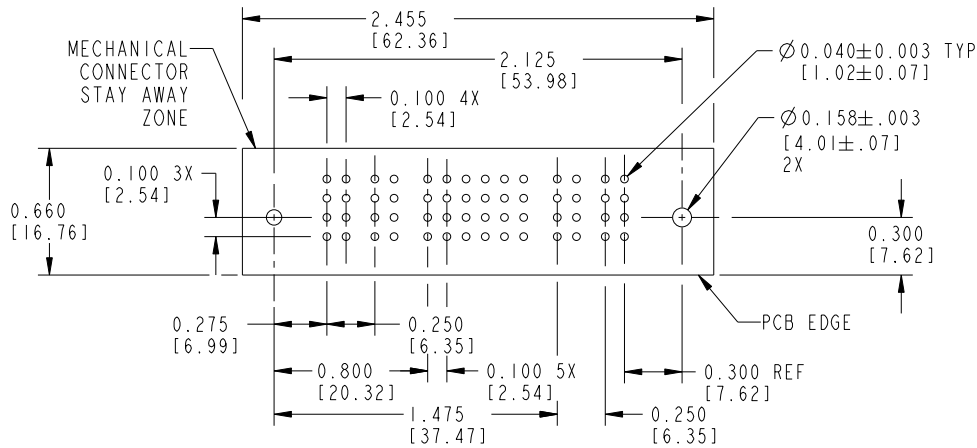
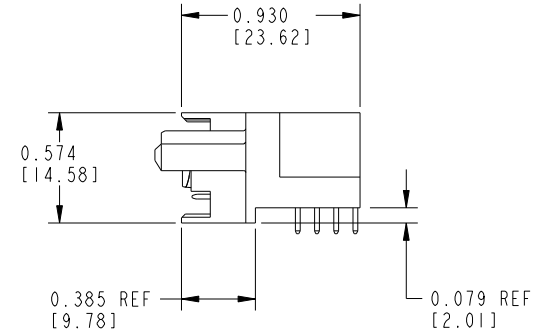
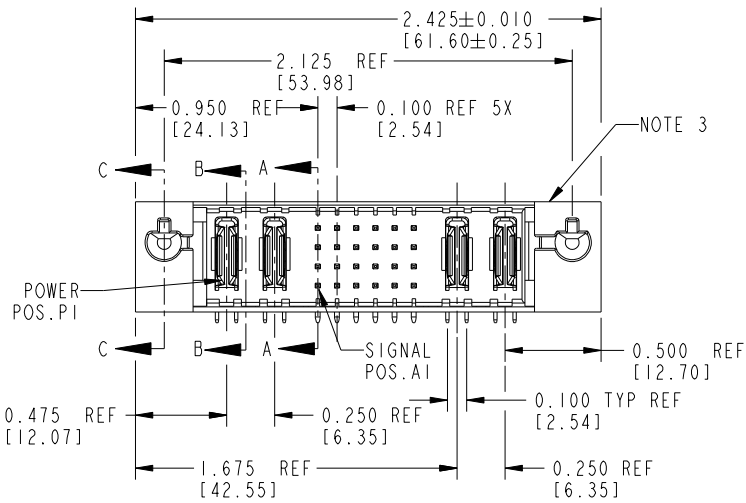


Tous droits strictement réservés. Reproduction ou communication a des tiers interdite sous quelque forme que ce soit sans autorisation écrite du propriétaire. Propriété de c FCI. Droits de reproduction FCI.

All rights strictly reserved. Reproduction or issue to third parties in any form whatever is not permitted without written authority from the proprietor. Property of FCI. Copyright FCI.



PRODUCT NUMBER
51534-XXYYY--
NOTE: (2)
SEE SHEET 3



RECOMMENDED PCB LAYOUT

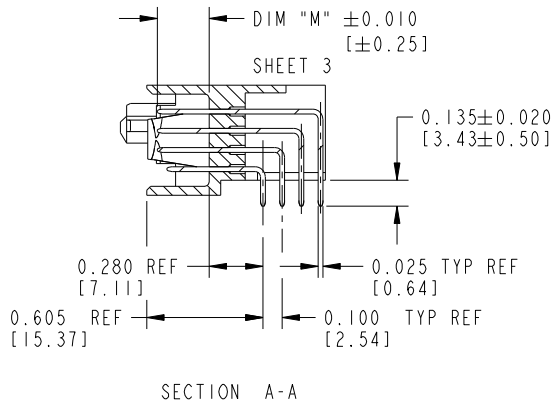
mat'l code				NOTE 1		tolerances unless otherwise specified		CUSTOMER		FCI	
lfr	ecn no.	dr	date	linear	.XX±.01/.X±.3	COPY		projection		www.fciconnect.com	
H	DG06-0011	CS	01/09/06	angles	.XXX±.005/.XX±.13	INCH/MM		title		2P + 24S + 2P	
J	DG08-0266	WD	09/21/08		.XXX±.0020/.X±.051	scale		product family		PWRBLADE	
				dr	0°±2°	1:1		size		213	
				enrg	D. WOLFORD 10/14/98			dwg no		51534	
				chr	J. BROWN 10/14/98			sheet		1 of 3	
				appd	J. BROWN 10/14/98			code			
sheet index	revision sheet	J 1	J 2	J 3							

Tous droits strictement réservés. Reproduction ou communication a des tiers interdite sous quelque forme que ce soit sans autorisation écrite du propriétaire. Propriété de c FCI. Droits de reproduction FCI.

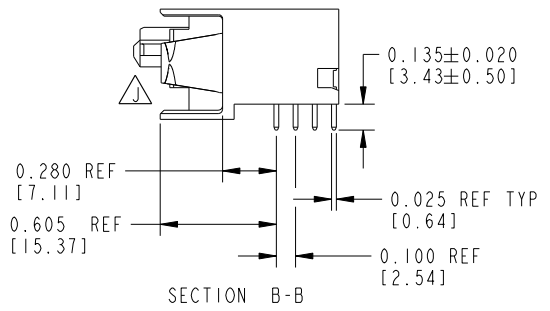
All rights strictly reserved. Reproduction or issue to third parties in any form whatever is not permitted without written authority from the proprietor. Property of FCI. Copyright FCI.



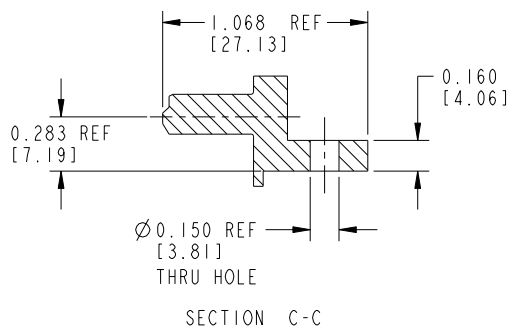
PRODUCT NUMBER
51534-XXYYY--
NOTE: (2)
SEE SHEET 3



SECTION A-A



SECTION B-B



SECTION C-C

mat'l code		NOTE 1		tolerances unless otherwise specified		CUSTOMER		FCI		www.fciconnect.com	
lfr	ecn no.	dr	date	linear	.XX±.01/.X±.3	COPY		projection		title	
J				angles	.XXX±.005/.XX±.13	INCH/MM		RIGHT ANGLE		2P + 24S + 2P	
				dr	.XXX±.0020/.X±.051	1:1		product family		PWRBLADE	
				enr	0°±2°	A		size		213	
				chr		51534		dwg no		sheet	
				appd		2					
sheet index	revision sheet										

Pro/E

PDM: Rev:3

STATUS: Released

Printed: Dec 20, 2010

1 | 2

3 |

4

A

A

B

B

1 | 2

4

Tous droits strictement réservés. Reproduction ou communication a des tiers interdite sous quelque forme que ce soit sans autorisation écrite du propriétaire. Propriété de c FCI. Droits de reproduction FCI.



All rights strictly reserved. Reproduction or issue to third parties in any form whatever is not permitted without written authority from the proprietor. Property of FCI. Copyright FCI.

1 | 2

3 |

4

PRODUCT No.	ROWS	POWER		SIGNAL						POWER		E2	
		E1	P1	P2	1	2	3	4	5	6	P3		P4
51534-XX001-- NOTE: ②	D C B A		PA	PA	UUUUUU	TTTTTT	SSSSSS	RRRRRR	UUUUUU	TTTTTT	SSSSSS	RRRRRR	

PRODUCT No.	ROWS	POWER		SIGNAL						POWER		E2	
		E1	P1	P2	1	2	3	4	5	6	P3		P4
51534-XX002-- NOTE: ②	D C B A		PA	PA	UUUUUU	TTTTTT	SSSSSS	RRRRRR	UUUUUU	TTTTTT	SSSSSS	RRRRRR	

PCB NOTES:

- ALL DIMENSIONS ARE BASIC UNLESS OTHERWISE SPECIFIED.
- ALL THROUGH HOLES ARE LOCATED WITH A TRUE POSITION OF 0.004[0.10]
- ALL HOLE DIAMETERS ARE FINISHED HOLE SIZE
- Ø0.158 [4.01] THROUGH HOLES ARE UNPLATED
- Ø0.0453±0.0010[1.151±0.025] DRILLED HOLES PLATED WITH 0.0003[0.008] MIN SnPb OVER 0.001[0.03] to 0.003[0.08] Cu PLATING TO ACHIEVE A 0.040±0.003[1.02±0.07] HOLE
- ▲SYMBOL WILL BE NEXT TO ANY DIMENSION, VIEW, OR NOTE WHICH HAS BEEN MODIFIED WITH THE CURRENT DRAWING REVISION.

CONNECTOR NOTES:

- HOUSING MATERIAL: UL94 V-0 GLASS FILLED HIGH TEMP. THERMOPLASTIC.
SIGNAL PIN MATERIAL: COPPER ALLOY.
POWER CONTACT MATERIAL: COPPER ALLOY.
- MANUFACTURER'S NAME, P/N, AND DATE CODE TO APPEAR ON THIS SURFACE.
- ▲3. SEE ITEM 1 & 2 IN PRINT 10064183 FOR PLATING SPEC OF 51534-XX00X AND 51534-XX00XLF RESPECTIVELY.
- PRODUCT SPECIFICATION GS-12-149.

ITEM NO.	DIM "M" ±0.010 [0.25]		CONTACT TYPE
E	0.220	[5.59]	SIGNAL
F	0.220	[5.59]	SIGNAL
R	0.270	[6.86]	SIGNAL
S	0.270	[6.86]	SIGNAL
T	0.270	[6.86]	SIGNAL
U	0.270	[6.86]	SIGNAL
PA	N/A	[N/A]	POWER

mat'l code		NOTE 1		tolerances unless otherwise specified		CUSTOMER		FCI	
ltr	ecn no.	dr	date	linear	.XX±.01/.X±.3	COPY		www.fciconnect.com	
J				angles	.XXX±.005/.XX±.13 .XXX±.0020/.X±.051 0°±2°	projection	title 2P + 24S + 2P RIGHT ANGLE SOLDER HEADER		
				dr	D. WOLFORD 10/14/98	INCH/MM		product family	PWRBLADE
				enrg	J. BROWN 10/14/98	scale		size	dwg no
				chr	J. BROWN 10/14/98	1:1		A	51534
				appd	J. BROWN 10/14/98			code	213
sheet index	revision sheet							sheet	3

1 | 2

3 |

4

Pro/E

PDM: Rev:3

STATUS: Released

Printed: Dec 20, 2010