



TES-3082GT-M12-BP1

EN50155 10-port managed Ethernet switch with 8x10/100Base-T(X) and 2x10/100/1000Base-T(X), M12 connector and 1xbypass included

Features

- Leading EN50155-compliant Ethernet switch for rolling stock application
- World's fastest Redundant Ethernet Ring: **O-Ring** (recovery time < 10ms over 250 units of connection)
- **Open-Ring** support the other vendor's ring technology in open architecture
- STP/RSTP/MSTP supported
- Support **PTP Client** (Precision Time Protocol) clock synchronization
- IGMP v2/v3 (IGMP snooping support) for filtering multicast traffic
- SNMP v1/v2c/v3 support for secured network management
- RMON for traffic monitoring
- Support VLAN and LLDP protocol
- DHCP assign each Equipment IP by each Port
- Provided Relay bypass function with two gigabit ports
- Event notification through Syslog, Email, SNMP trap, and Relay Output
- Windows utility (**Open-Vision**) support centralized management and configurable by Web-based ,Telnet, and Console (CLI)
- M12 connectors to guarantee reliable operation against environmental disturbances
- Wall mounting enabled



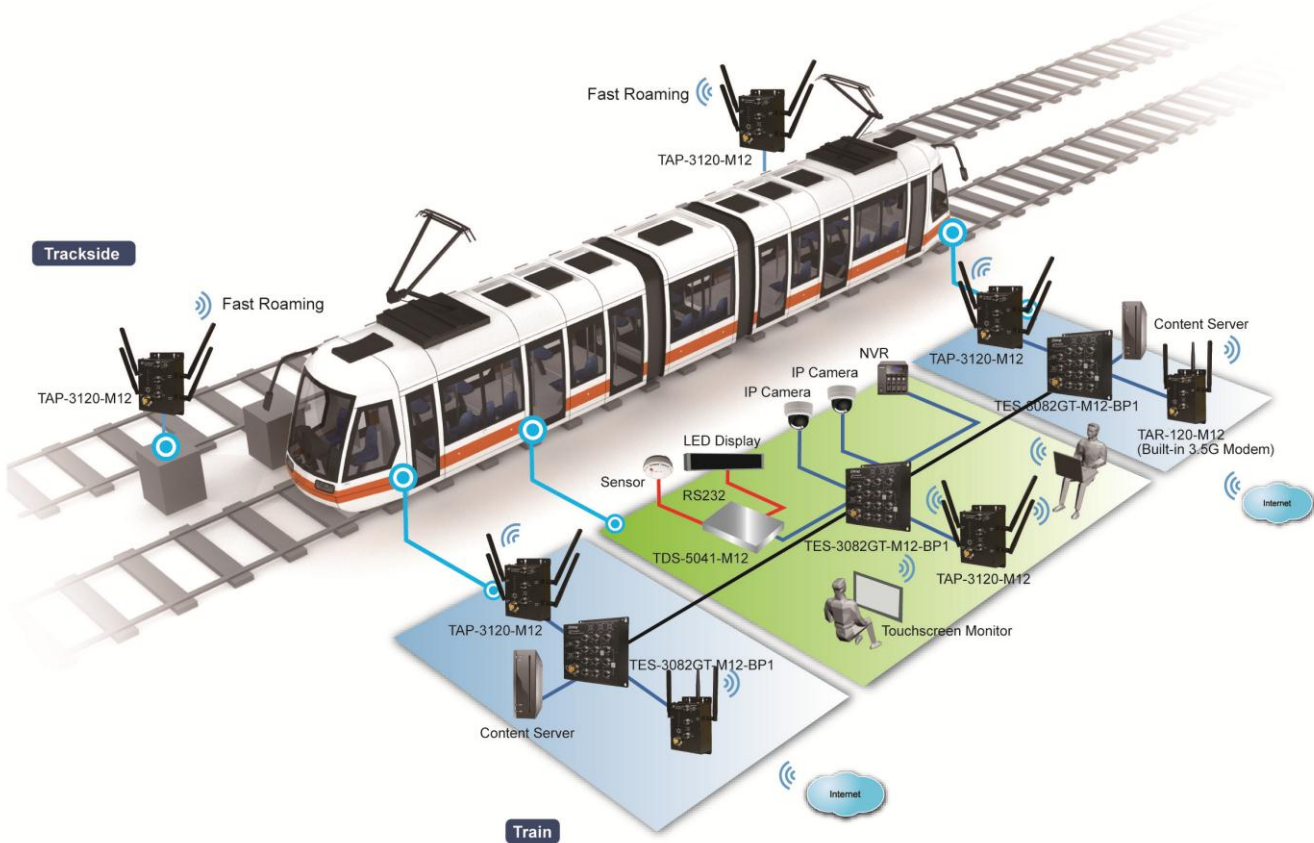
Introduction

ORing's Transporter™ series managed Ethernet switches are designed for industrial applications, such as rolling stock, vehicle, and railway applications. The TES-3082GT-M12-BP1 is a managed Redundant Ring Ethernet switch with 8x10/100Base-T(X) and 2x10/100/1000Base-T(X) ports which is specifically designed for the toughest and fully compliant with EN50155 requirement. With completely support of Ethernet Redundancy protocol, O-Ring (recovery time < 10ms over 250 units of connection), Open-Ring, O-Chain and MSTP/RSTP/STP (IEEE 802.1s/w/D) can protect your mission-critical applications from network interruptions or temporary malfunctions with its fast recovery technology. Another Open-Ring technology is also supported which can applied for other vendor's proprietary ring. TES-3082GT-M12-BP1 EN50155 Ethernet switch use M12 connectors to ensure tight, robust connections, and guarantee reliable operation against environmental disturbances, such as vibration and shock. TES-3082GT-M12-BP1 can be managed centralized and convenient by a powerful windows utility ~ Open-Vision. In addition, the wide operating temperature range from -40 °C to 70°C can satisfy most of operating environment. Therefore, the switch is one of the most reliable choices for rolling stock and highly-managed Ethernet application.

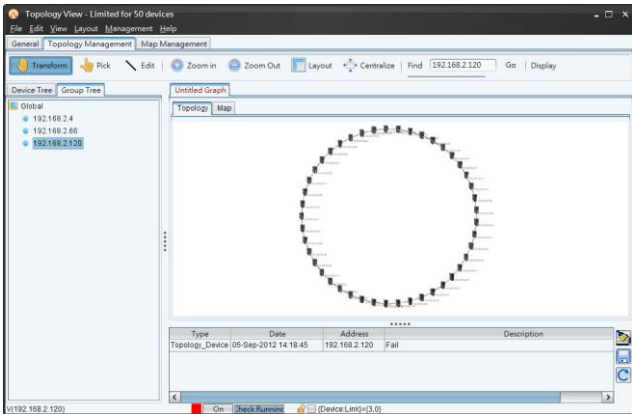
Open-Vision

ORing's switches are intelligent switches. Different from other traditional redundant switches, ORing provides a set of Windows utility (Open-Vision) for user to manage and monitor all of industrial Ethernet switches on the industrial network.

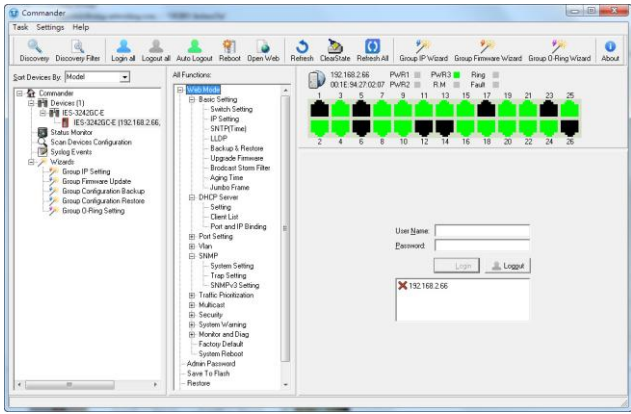
Railway Application



Network connection

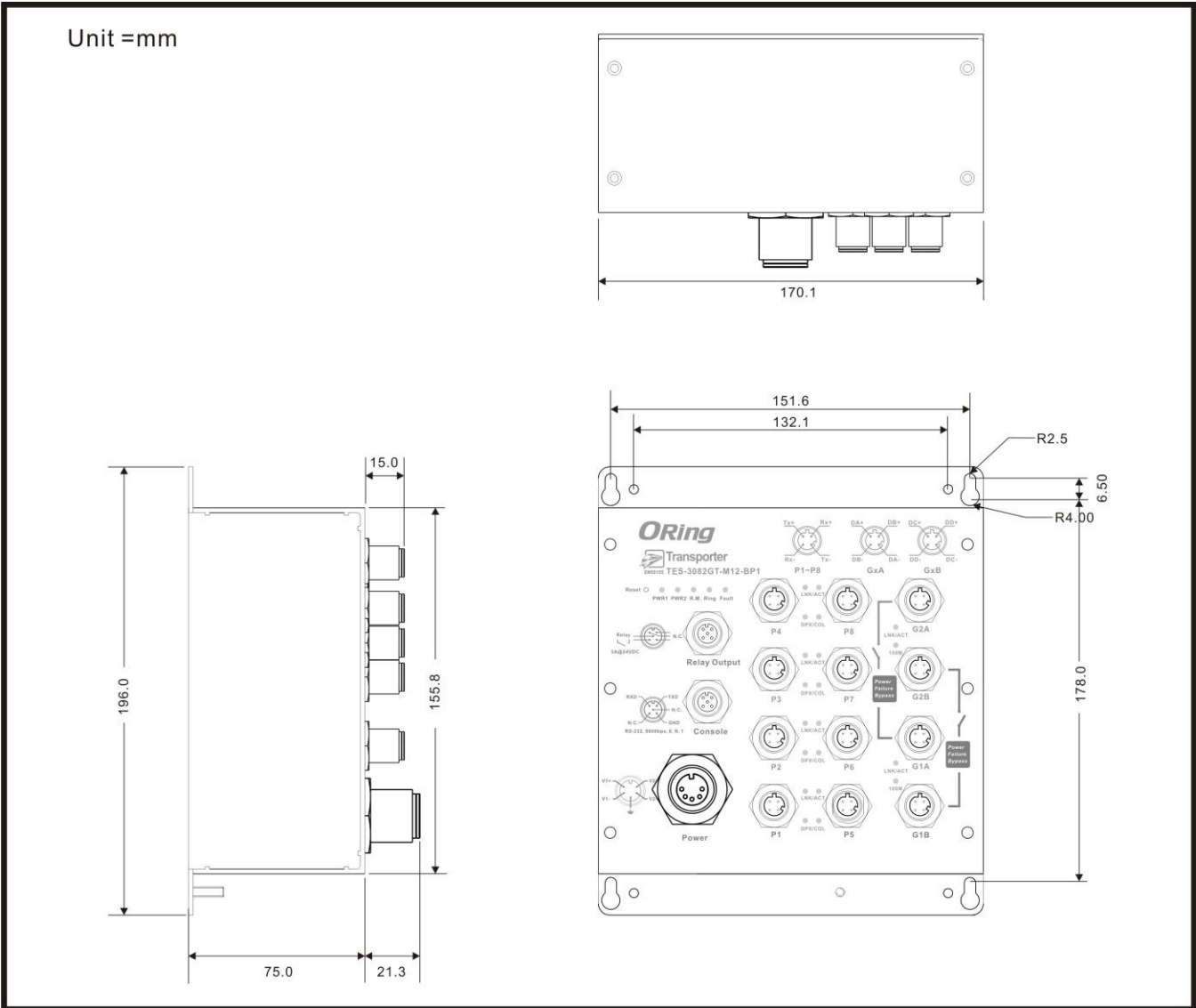


Topology View



Monitoring and Configuration interface

Dimension



Specifications

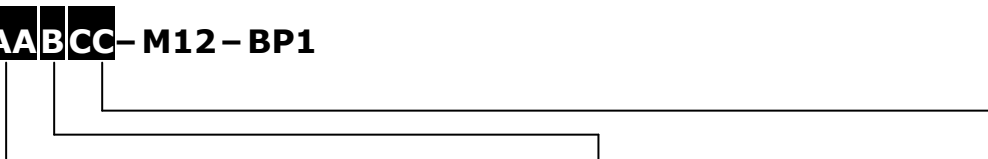
| | |
|--|--|
| ORing Switch Model | TES-3082GT-M12-BP1 |
| Physical Ports | |
| 10/100 Base-T(X) Ports in M12 Auto MDI/MDIX | 8 x M12 connector (4-pin D-coding) |
| 10/100/1000Base-T(X) ports in M12 | 2 x (combinig 2 x M12 connectors 4-pin D-coding for 1 Gigabit port) |
| RS-232 Serial Console Port | RS-232 in M12 connector (A-coding). Baud rate setting: 9600bps, 8, N, 1 |
| Technology | |
| Ethernet Standards | IEEE 802.3 for 10Base-T IEEE 802.3u for 100Base-TX IEEE 802.3ab for 1000Base-T IEEE 802.3x for Flow control |

| | |
|---|--|
| | IEEE 802.3ad for LACP (Link Aggregation Control Protocol) IEEE 802.1D for STP (Spanning Tree Protocol) IEEE 802.1p for COS (Class of Service) IEEE 802.1Q for VLAN Tagging IEEE 802.1w for RSTP (Rapid Spanning Tree Protocol) IEEE 802.1s for MSTP (Multiple Spanning Tree Protocol) IEEE 802.1x for Authentication IEEE 802.1AB for LLDP (Link Layer Discovery Protocol) |
| MAC Table | 8192 MAC addresses |
| Priority Queues | 4 |
| Processing | Store-and-Forward |
| Switch Properties | Switching latency: 7 us Switching bandwidth: 5.6Gbps Max. Number of Available VLANs: 4096 IGMP multicast groups: 1024 Port rate limiting: User Define |
| Security Features | Enable/disable ports, MAC based port security Port based network access control (802.1x) VLAN (802.1Q) to segregate and secure network traffic Supports Q-in-Q VLAN for performance & security to expand the VLAN space Radius centralized password management SNMP v1/v2c/v3 encrypted authentication and access security |
| Software Features | STP/RSTP/MSTP (IEEE 802.1D/w/s) Redundant Ring (O-Ring) with recovery time less than 10ms over 250 units TOS/Diffserv supported Quality of Service (802.1p) for real-time traffic VLAN (802.1Q) with VLAN tagging and GVRP supported IGMP Snooping for multicast filtering Port configuration, status, statistics, monitoring, security SNTP for synchronizing of clocks over network Support PTP Client (Precision Time Protocol) clock synchronization DHCP Server / Client support Port Trunk support MVR (Multicast VLAN Registration) support Modbus TCP |
| Network Redundancy | O-Ring Open-Ring O-Chain MRP STP/RSTP/MSTP |
| Warning / Monitoring System | Relay output for fault event alarming Syslog server / client to record and view events Include SMTP for event warning notification via email Event selection support |
| LED Indicators | |
| Power Indicator | Green : Power LED x 2 |
| R.M. Indicator | Green : Indicate system operated in O-Ring Master mode |
| O-Ring Indicator | Green : Indicate system operated in O-Ring mode |
| Fault Indicator | Amber : Indicate unexpected event occurred |
| 10/100Base-T(X) M12 PoE Port Indicator | Green for port Link/Act. Amber for Collision/Duplex indicator. |
| 10/100/1000Base-T(X) M12 Port Indicator | Green for Link/Act. Amber for 100Mbps indicator |
| Fault contact | |
| Relay | Relay output to carry capacity of 3A at 24VDC on M12 connector (5-pin A-coding) |
| Power | |
| Redundant Input Power | Dual DC inputs. 12~48VDC on 5-pin M23 connector |
| Power Consumption (Typ.) | 11 Watts |
| Overload Current Protection | Present |
| Reverse Polarity Protection | Not Presented |
| Physical Characteristic | |

| | |
|-----------------------------|--|
| Enclosure | IP-40 |
| Dimension (W x D x H) | 170 (W) x 75 (D) x196 (H) mm |
| Weight (g) | 1338 g |
| Environmental | |
| Storage Temperature | -40 to 85°C (-40 to 185°F) |
| Operating Temperature | -40 to 70°C (-40 to 158°F) |
| Operating Humidity | 5% to 95% Non-condensing |
| Regulatory approvals | |
| EMI | FCC Part 15, CISPR (EN55022) class A, EN50155 (EN50121-3-2, EN55011, EN50121-4) |
| EMS | EN61000-4-2 (ESD), EN61000-4-3 (RS), EN61000-4-4 (EFT), EN61000-4-5 (Surge), EN61000-4-6 (CS), EN61000-4-8, EN61000-4-11 |
| Shock | IEC60068-2-27 |
| Free Fall | IEC60068-2-32 |
| Vibration | IEC60068-2-6 |
| Safety | EN60950-1 |
| Warranty | 5 years |

Ordering Information

TES-3AABCC-M12-BP1



| Code Definition | 10/100Base-T(X) Port Number | Additional Port Number | Additional Port Number |
|-----------------|-----------------------------|--|---------------------------------|
| Option | - 08: 8 ports | - 2: 2 ports | - GT: 10/100/1000Base-T(X) port |
| Available Model | Model Name | Description | |
| | TES-3082GT-M12-BP1 | EN50155 10-port managed Ethernet switch with 8x10/100Base-T(X) and 2x10/100/1000Base-T(X), M12 connector and 1xbypass included | |

Packing List

- TES-3082GT-M12-BP1 x 1
- ORing Tool CD x 1
- Quick Installation Guide x 1

Optional Accessories

- Open-Vision M500 : Powerful Network Management Windows utility Suit, 500 IP devices
- DR-120 series : 120 Watts DIN-Rail power supply
- M12C : M12 cable accessories
- DR-45 series : 45 Watts DIN-Rail power supply
- DR-75 series : 75 Watts DIN-Rail power supply
- Console cable