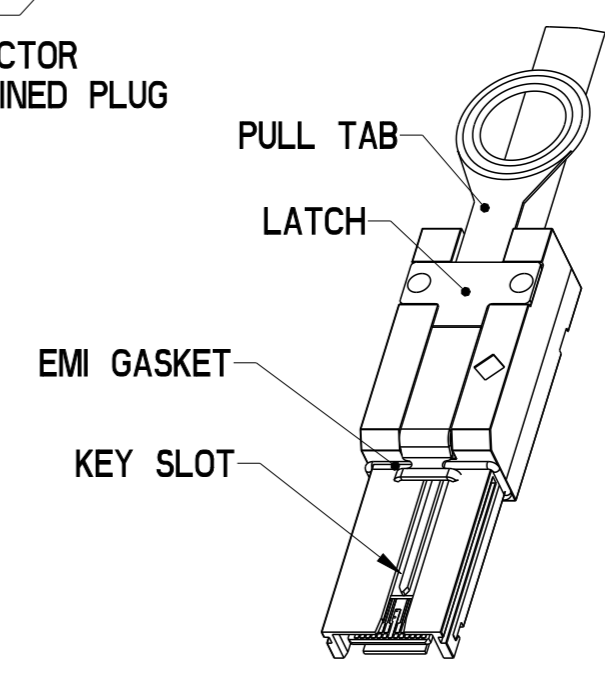
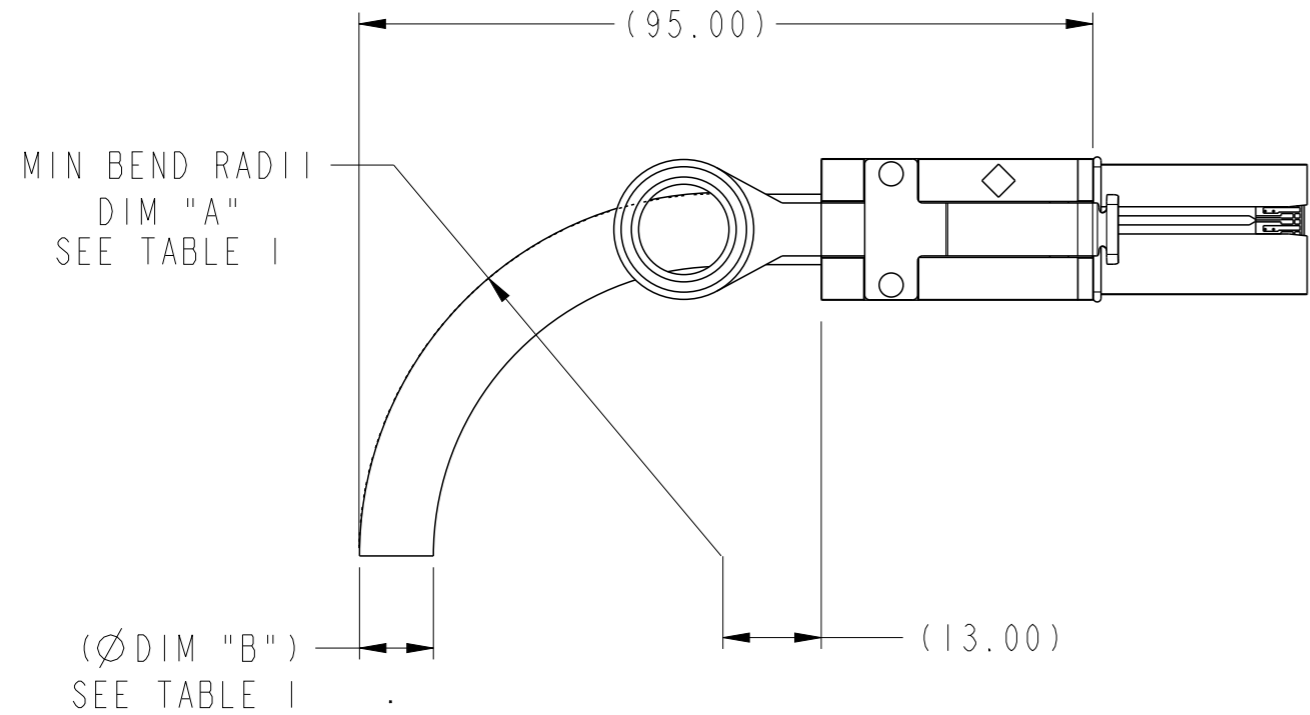


DETAIL A
KEY SLOTS #2 & #4 SHOWN
SCALE 2:1



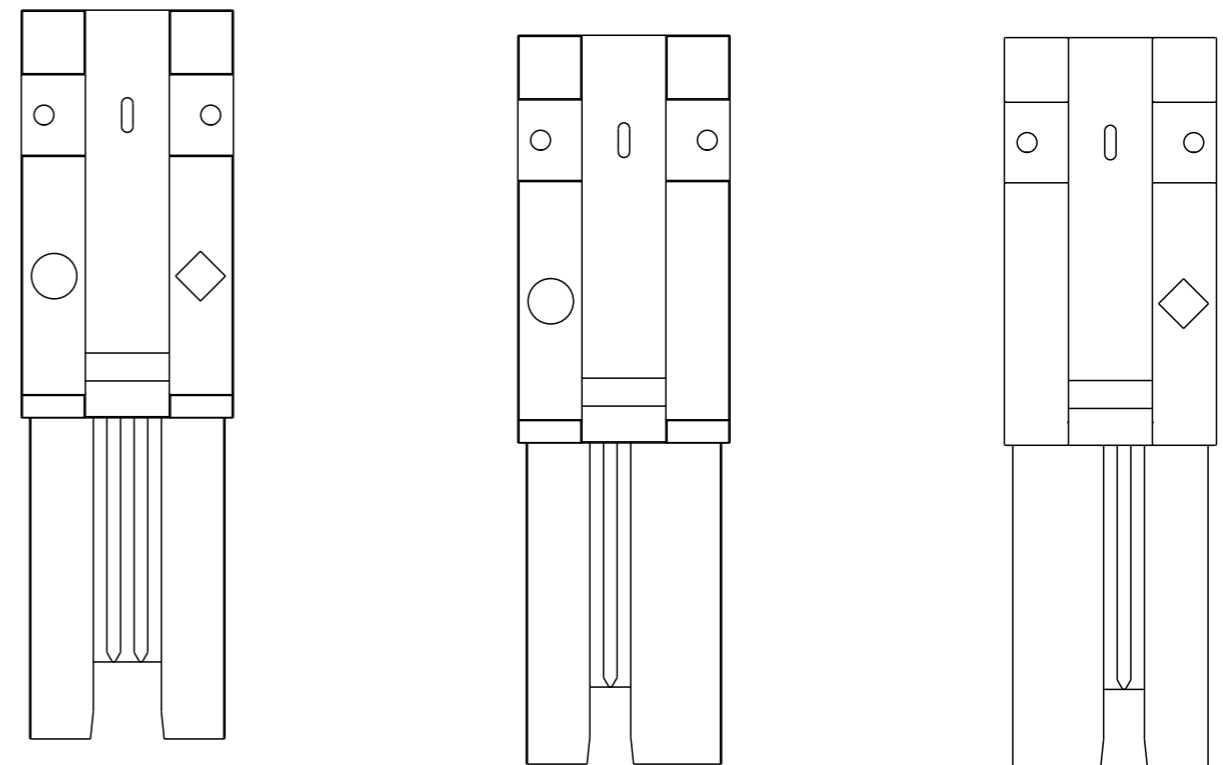
| | | | | | | | | |
|-------------|----------------|--|------------------------|--------|--------------------|---------------|-------|-----|
| dr | Deborah Ingram | 2010/06/03 | projection | MM | size | A3 | scale | 1:1 |
| eng | Tom Feng | 2015/08/12 | | | ecn no | ELX-N-21245-1 | | |
| chr | - | - | | | rel level | Released | | |
| appr | Frank Mao | 2015/08/12 | | | product family | C&A | | |
| | | title MiniSAS2.1, Untrained Assy, Plug to Plug | | | dwg no 10114976 | rev C | | |
| www.fci.com | | cat. no. | Product - Customer Drw | | sheet 1 of 6 | | | |



BEND RADIUS
(24 AWG SHOWN)

TABLE 1

| CABLE | DESCRIPTION | DIM "A" | DIM "B" |
|--------|-------------|---------|-------------|
| 24 AWG | NON-HF | R52.5 | Ø10.2mm REF |
| 26 AWG | NON-HF | R47.5 | Ø9.5mm REF |
| 28 AWG | NON-HF | R35.5 | Ø8.0mm REF |



KEY SLOT 2, 4 & 6
○ ◇ UNIVERSAL PORT

KEY SLOT 4 & 6
○ IN PORT

KEY SLOT 2 & 4
◇ OUT PORT

MINI SAS 2.1 UNTRAINED KEYING OPTIONS

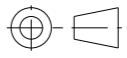
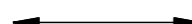
| | | | | | | |
|-------------|----------------|------------|--|------------|------------------------|--------------|
| dr | Deborah Ingram | 2010/06/03 | projection | size A3 | scale 1:1 | |
| eng | Tom Feng | 2015/08/12 | | | | |
| chr | - | - | | | | |
| appr | Frank Mao | 2015/08/12 | product family | C&A | rel level | Released |
| | | | title MiniSAS2.1, Untrained Assy, Plug to Plug | | dwg no 10114976 | rev C |
| www.fci.com | | | cat. no. | - | Product - Customer Drw | sheet 2 of 6 |



Copyright FCI.

TABLE 2 MINI SAS 2.1 UNTRAINED CABLE ASSEMBLY (NON-HF)

| PRODUCT NUMBER SEE NOTE 4 | DESCRIPTION | GAUGE | "DIM L" LENGTH | END P1 KEY SLOT | END P2 KEY SLOT |
|------------------------------|-----------------------|--------|-------------------|--------------------|--------------------|
| 10114976-P010001LF | X4 SAS CABLE ASSEMBLY | 28 AWG | 1M | 2, 4 | 4, 6 |
| 10114976-P020001LF | X4 SAS CABLE ASSEMBLY | 28 AWG | 2M | 2, 4 | 4, 6 |
| 10114976-P030001LF | X4 SAS CABLE ASSEMBLY | 28 AWG | 3M | 2, 4 | 4, 6 |
| 10114976-P040001LF | X4 SAS CABLE ASSEMBLY | 28 AWG | 4M | 2, 4 | 4, 6 |
| 10114976-P050001LF | X4 SAS CABLE ASSEMBLY | 28 AWG | 5M | 2, 4 | 4, 6 |
| 10114976-P060001LF | X4 SAS CABLE ASSEMBLY | 28 AWG | 6M | 2, 4 | 4, 6 |
| 10114976-N040001LF | X4 SAS CABLE ASSEMBLY | 26 AWG | 4M | 2, 4 | 4, 6 |
| 10114976-N050001LF | X4 SAS CABLE ASSEMBLY | 26 AWG | 5M | 2, 4 | 4, 6 |
| 10114976-N060001LF | X4 SAS CABLE ASSEMBLY | 26 AWG | 6M | 2, 4 | 4, 6 |
| 10114976-N070001LF | X4 SAS CABLE ASSEMBLY | 26 AWG | 7M | 2, 4 | 4, 6 |
| 10114976-M060001LF | X4 SAS CABLE ASSEMBLY | 24 AWG | 6M | 2, 4 | 4, 6 |
| 10114976-M070001LF | X4 SAS CABLE ASSEMBLY | 24 AWG | 7M | 2, 4 | 4, 6 |
| 10114976-M080001LF | X4 SAS CABLE ASSEMBLY | 24 AWG | 8M | 2, 4 | 4, 6 |
| 10114976-M090001LF | X4 SAS CABLE ASSEMBLY | 24 AWG | 9M | 2, 4 | 4, 6 |
| 10114976-M100001LF | X4 SAS CABLE ASSEMBLY | 24 AWG | 10M | 2, 4 | 4, 6 |
| 10114976-P005002LF | X4 SAS CABLE ASSEMBLY | 28 AWG | 0.5M | 2, 4, 6 | 2, 4, 6 |
| 10114976-P006002LF | X4 SAS CABLE ASSEMBLY | 28 AWG | 0.6M | 2, 4, 6 | 2, 4, 6 |
| 10114976-P012502LF | X4 SAS CABLE ASSEMBLY | 28 AWG | 1.25M | 2, 4, 6 | 2, 4, 6 |
| 10114976-P015002LF | X4 SAS CABLE ASSEMBLY | 28 AWG | 1.5M | 2, 4, 6 | 2, 4, 6 |
| 10114976-P010002LF | X4 SAS CABLE ASSEMBLY | 28 AWG | 1M | 2, 4, 6 | 2, 4, 6 |
| 10114976-P020002LF | X4 SAS CABLE ASSEMBLY | 28 AWG | 2M | 2, 4, 6 | 2, 4, 6 |
| 10114976-P030002LF | X4 SAS CABLE ASSEMBLY | 28 AWG | 3M | 2, 4, 6 | 2, 4, 6 |
| 10114976-P035002LF | X4 SAS CABLE ASSEMBLY | 28 AWG | 3.5M | 2, 4, 6 | 2, 4, 6 |
| 10114976-P040002LF | X4 SAS CABLE ASSEMBLY | 28 AWG | 4M | 2, 4, 6 | 2, 4, 6 |
| 10114976-P050002LF | X4 SAS CABLE ASSEMBLY | 28 AWG | 5M | 2, 4, 6 | 2, 4, 6 |
| 10114976-P060002LF | X4 SAS CABLE ASSEMBLY | 28 AWG | 6M | 2, 4, 6 | 2, 4, 6 |
| 10114976-N040002LF | X4 SAS CABLE ASSEMBLY | 26 AWG | 4M | 2, 4, 6 | 2, 4, 6 |
| 10114976-N050002LF | X4 SAS CABLE ASSEMBLY | 26 AWG | 5M | 2, 4, 6 | 2, 4, 6 |
| 10114976-N060002LF | X4 SAS CABLE ASSEMBLY | 26 AWG | 6M | 2, 4, 6 | 2, 4, 6 |
| 10114976-N070002LF | X4 SAS CABLE ASSEMBLY | 26 AWG | 7M | 2, 4, 6 | 2, 4, 6 |
| 10114976-M060002LF | X4 SAS CABLE ASSEMBLY | 24 AWG | 6M | 2, 4, 6 | 2, 4, 6 |
| 10114976-M070002LF | X4 SAS CABLE ASSEMBLY | 24 AWG | 7M | 2, 4, 6 | 2, 4, 6 |
| 10114976-M080002LF | X4 SAS CABLE ASSEMBLY | 24 AWG | 8M | 2, 4, 6 | 2, 4, 6 |
| 10114976-M090002LF | X4 SAS CABLE ASSEMBLY | 24 AWG | 9M | 2, 4, 6 | 2, 4, 6 |
| 10114976-M100002LF | X4 SAS CABLE ASSEMBLY | 24 AWG | 10M | 2, 4, 6 | 2, 4, 6 |

| | | | | | | | | | |
|-------------|----------------|------------|----------------|-----|---|---|--------------|---------------|---|
| dr | Deborah Ingram | 2010/06/03 | projection | MM | size | A3 | scale | 1:1 | |
| eng | Tom Feng | 2015/08/12 | | |  |  | ecn no | ELX-N-21245-1 | |
| chr | - | - | product family | C&A | | | rel level | Released | |
| appr | Frank Mao | 2015/08/12 | | | dwg no | 10114976 | | rev | C |
| www.fci.com | | cat. no. | - | | Product - Customer Drw | | sheet 3 of 6 | | |

1

2

3

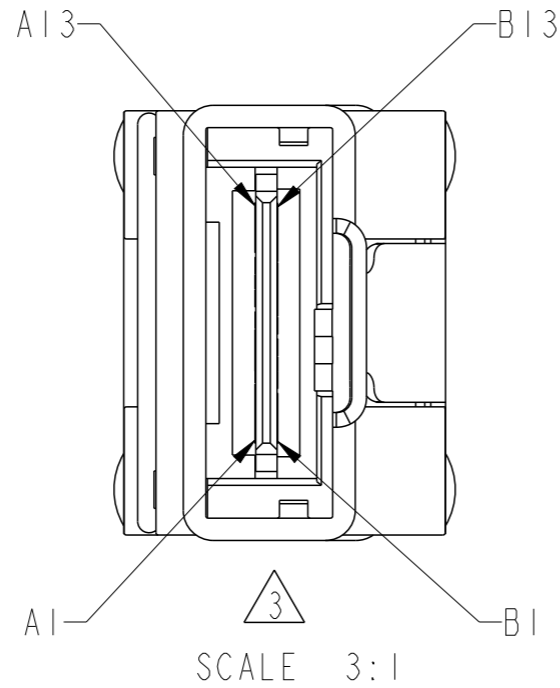
4

A

B

C

D



WIRING LIST SEE NOTE 7

| | | | | |
|-------|-----|---|-----|-------|
| GND | A1 | — | B1 | GND |
| Rx 0+ | A2 | ← | B2 | Tx 0+ |
| Rx 0- | A3 | ← | B3 | Tx 0- |
| GND | A4 | — | B4 | GND |
| Rx 1+ | A5 | ← | B5 | Tx 1+ |
| Rx 1- | A6 | ← | B6 | Tx 1- |
| GND | A7 | — | B7 | GND |
| Rx 2+ | A8 | ← | B8 | Tx 2+ |
| Rx 2- | A9 | ← | B9 | Tx 2- |
| GND | A10 | — | B10 | GND |
| Rx 3+ | A11 | ← | B11 | Tx 3+ |
| Rx 3- | A12 | ← | B12 | Tx 3- |
| GND | A13 | — | B13 | GND |
| GND | B1 | — | A1 | GND |
| Tx 0+ | B2 | → | A2 | Rx 0+ |
| Tx 0- | B3 | → | A3 | Rx 0- |
| GND | B4 | — | A4 | GND |
| Tx 1+ | B5 | → | A5 | Rx 1+ |
| Tx 1- | B6 | → | A6 | Rx 1- |
| GND | B7 | — | A7 | GND |
| Tx 2+ | B8 | → | A8 | Rx 2+ |
| Tx 2- | B9 | → | A9 | Rx 2- |
| GND | B10 | — | A10 | GND |
| Tx 3+ | B11 | → | A11 | Rx 3+ |
| Tx 3- | B12 | → | A12 | Rx 3- |
| GND | B13 | — | A13 | GND |

P1

P2

A

B

C

D



Copyright FCI.

| | | | | | | | | |
|-------------|----------------|------------|---|----|------------------------|-----------------|-------|--------------|
| dr | Deborah Ingram | 2010/06/03 | projection | MM | size | A3 | scale | 1:1 |
| eng | Tom Feng | 2015/08/12 | | | ecn no ELX-N-21245-1 | | | |
| chr | - | - | | | rel level Released | | | |
| appr | Frank Mao | 2015/08/12 | product family C&A | | rel level Released | | | |
| | | | title MinisAS2.1, Untrained Assy, Plug to Plug | | | dwg no 10114976 | | rev C |
| www.fci.com | | | cat. no. - | | Product - Customer Drw | | | sheet 4 of 6 |

2

3

PDS: Rev :C

STATUS:Released

Printed: Aug 12, 2015

NOTES:

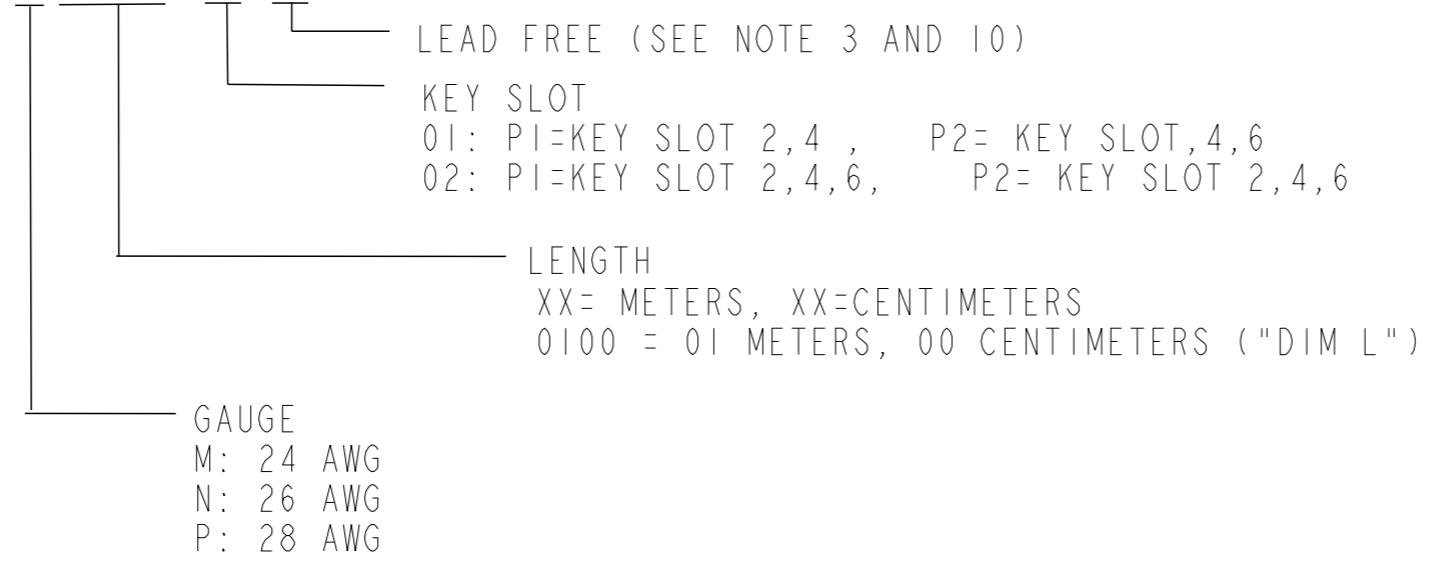
① - MATERIAL:
 BACKSHELLS: ZINC DIECAST
 PULL TAB: MOLDED THERMOPLASTIC
 LATCH: STAINLESS STEEL
 JET MELT: POLYAMIDE POLYMER

2 - ELECTRICAL PERFORMANCE PER CURRENT REVISION
 OF SERIAL ATTACHED SCSI - 2.1 (SAS-2.1) T10/2125-D

③ - THIS PRODUCT MEETS THE RESTRICTION OF HAZARDOUS SUBSTANCES IN
 ELECTRICAL AND ELECTRONIC EQUIPMENT (RoHS) DIRECTIVE (2011/65/EU)

4 - PART NUMBER DESCRIPTION

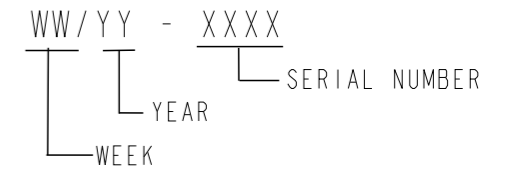
10114976 - X XX XX XX LF



⑤ - UNLESS OTHERWISE SPECIFIED ASSEMBLED LENGTH TOLERANCE IS TO BE:
 "DIM L" < 1 METER = ± 25.0mm
 "DIM L" = 1 METER TO 10 METERS = ± 2% OF "DIM L"
 "DIM L" > 10 METERS = +0.00/-4% OF "DIM L"

⑥ - UNLESS OTHERWISE SPECIFIED LABEL POSITION IS TO BE 50mm FROM REAR OF CONNECTOR.
 LABEL DETAILS:
 MANUFACTURER CODE OR NAME
 CUSTOMER P/N OR FCI P/N
 REVISION
 DATE CODE (WW/YY FORMAT) - SERIAL NUMBER
 COUNTRY ORIGIN

EXAMPLE SHOWN BELOW:



Copyright FCI.



| | | | | | | | | |
|-------------|----------------|------------|------------|-----|------------------------|--------------|-----------------------|----------|
| dr | Deborah Ingram | 2010/06/03 | projection | MM | size | A3 | scale | 1:1 |
| eng | Tom Feng | 2015/08/12 | | ← → | ecn no ELX-N-21245-1 | | | |
| chr | - | - | | | product family | C&A | rel level Released | |
| appr | Frank Mao | 2015/08/12 | FCI | | title | | MinisAS2.1, Untrained | rev |
| www.fci.com | | | cat. no. | - | Product - Customer Drw | sheet 5 of 6 | dwg no | 10114976 |
| | | | | | rev | C | | |

NOTES CONTINUED:

- ⑦ - ALL CABLE ASSEMBLIES SHALL BE 100% TESTED FOR CONTINUITY AS DEFINED IN WIRING LIST.
- 8 - UNLESS OTHERWISE SPECIFIED ALL CABLE ASSEMBLIES SHALL BE 100% HI-POT TESTED BY APPLYING 300V DC FOR A MINIMUM OF 10ms, UNLESS ACTIVE COMPONENTS ARE USED IN THIS ASSEMBLY.
- 9 - OTHER TESTING PERFORMED AS REQUIRED BY PRODUCT SPECIFICATION: GS-12-548.
- ⑩ - PACKAGING OF LEAD FREE PRODUCTS MEETS LABELING AND PACKAGING PER SPECIFICATION GS-14-920. PACKAGE CABLE ASSEMBLIES PER GS-14-1272.
- ⑪. THIS DIMENSION IS A FINISHED PRODUCT LENGTH.
- ③ 12. Raw cable is optional, which had been qualified by FCI and meet FCI product spec GS-12-548



Copyright FCI.

| | | | | | | | | | |
|-------------|----------------|------------|----------------|----------|-----------------------|---------------|------------------------|----------|--------------|
| dr | Deborah Ingram | 2010/06/03 | projection | MM ←→ | size | A3 | scale | 1:1 | |
| eng | Tom Feng | 2015/08/12 | | | ecn no | ELX-N-21245-1 | | | |
| chr | - | - | product family | C&A | rel level | | | | |
| appr | Frank Mao | 2015/08/12 | | | Released | | | | |
| | | title | | | MinisAS2.1, Untrained | | dwg no | 10114976 | rev |
| www.fci.com | | cat. no. | | | - | | Product - Customer Drw | | sheet 6 of 6 |