

# RP405

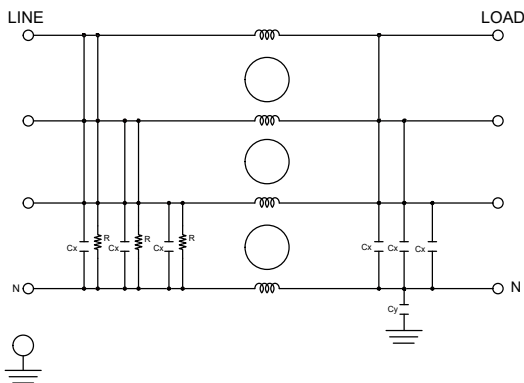
## 3-PHASE **WYE** COMPACT SINGLE STAGE POWER LINE FILTER

### FEATURES

- » Rated currents include **6A, 10A, 20A, 30A and 40A**
- » Single Stage Line Filter
- » Available with **W** (wires), **S** (studs) and **C** (connectors) option
- » Compact Design
- » Agency Approved to UL1283 / 60929, CSA C22.2, EN 60939
- » Y-cap value can be adjusted to fit specification

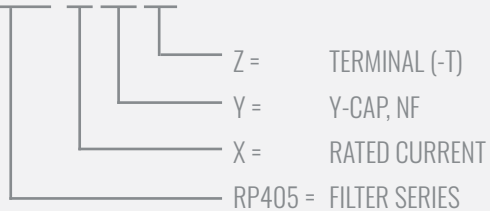


### ELECTRICAL SCHEMATIC



### HOW TO ORDER

RP405-X-Y-Z



**NOTE:** USE ANY COMBINATION OF -X (AMPS) WITH ANY -Y RATINGS

E.G. **RP405-20-1000-S** (20AMPS WITH 1000 NF YCAP)

For **X, Y** and **Z** options see product specification table.

### SPECIFICATIONS

OPERATING FREQUENCY	50/60Hz
USABLE FREQUENCY	DC - 400 Hz
MAX. OPERATING VOLTAGE	480V +10%
AMBIENT TEMPERATURE	-25 TO 50°C
CLIMATIC CATEGORY	25/100/21
TERMINALS (-T)	WIRE LEADS STUDS(M5) CONNECTORS
TYP. WEIGHT, LBS (KG)	2.5 (1.1)

### TYPICAL LEAKAGE CURRENT

@ 480 VAC 60 Hz	0 - 10.0 mA Max.
-----------------	------------------

### HIPOT RATINGS

LINE TO GROUND	3500 VDC
----------------	----------

### TYPICAL APPLICATIONS

- ✓ Power conversion systems
- ✓ Processing equipment
- ✓ Alternative energy equipment (EV charging & solar)
- ✓ Factory Machinery

# RP405

## 3-PHASE WYE COMPACT SINGLE STAGE POWER LINE FILTER

MODEL NO.	RATED CURRENT, A @ 40° C	Y-CAP, nF	LEAKAGE CURRENT mA, @ 480V AC/60 Hz	TERMINAL OPTIONS			MAX. DIMENSIONS" (MM)		
				(W) INPUT/ OUTPUT	(S) INPUT/ OUTPUT	(C) INPUT/ OUTPUT	WIDTH	(LENGTH)	HEIGHT
RP405-6-0-S	6	0	-		✓		4.25"(108)	5.71"(145)	1.75"(45)
RP405-6-0-W	6	0	-	✓			*	*	*
RP405-6-10-S	6	10	0.10		✓		4.25"(108)	5.71"(145)	1.75"(45)
RP405-6-10-W	6	10	0.10	✓			*	*	*
RP405-6-100-S	6	100	1.00		✓		4.25"(108)	5.71"(145)	1.75"(45)
RP405-6-100-W	6	100	1.00	✓			*	*	*
RP405-6-1000-S	6	1000	10.00		✓		4.25"(108)	5.71"(145)	1.75"(45)
RP405-6-1000-W	6	1000	10.00	✓			*	*	*
RP405-10-0-S	10	0	-		✓		4.25"(108)	5.71"(145)	1.75"(45)
RP405-10-0-W	10	0	-	✓			*	*	*
RP405-10-10-S	10	10	0.10		✓		4.25"(108)	5.71"(145)	1.75"(45)
RP405-10-10-W	10	10	0.10	✓			*	*	*
RP405-10-100-S	10	100	1.00		✓		4.25"(108)	5.71"(145)	1.75"(45)
RP405-10-100-W	10	100	1.00	✓			*	*	*
RP405-10-1000-S	10	1000	10.00		✓		4.25"(108)	5.71"(145)	1.75"(45)
RP405-10-1000-W	10	1000	10.00	✓			*	*	*
RP405-20-0-S	20	0	-		✓		4.25"(108)	5.71"(145)	1.75"(45)
RP405-20-0-W	20	0	-	✓			*	*	*
RP405-20-10-S	20	10	0.10		✓		4.25"(108)	5.71"(145)	1.75"(45)
RP405-20-10-W	20	10	0.10	✓			*	*	*
RP405-20-100-S	20	100	1.00		✓		4.25"(108)	5.71"(145)	1.75"(45)
RP405-20-100-W	20	100	1.00	✓			*	*	*
RP405-20-1000-S	20	1000	10.00		✓		4.25"(108)	5.71"(145)	1.75"(45)
RP405-20-1000-W	20	1000	10.00	✓			*	*	*
RP405-30-0-C	30	0	-			✓	*	*	*
RP405-30-0-S	30	0	-		✓		4.25"(108)	5.71"(145)	1.75"(45)
RP405-30-0-W	30	0	-	✓			*	*	*
RP405-30-10-C	30	10	0.10			✓	*	*	*
RP405-30-10-S	30	10	0.10		✓		4.25"(108)	5.71"(145)	1.75"(45)
RP405-30-10-W	30	10	0.10	✓			*	*	*
RP405-30-100-C	30	100	1.00			✓	*	*	*
RP405-30-100-S	30	100	1.00		✓		4.25"(108)	5.71"(145)	1.75"(45)
RP405-30-100-W	30	100	1.00	✓			*	*	*
RP405-30-1000-C	30	1000	10.00			✓	*	*	*

**ADDITIONAL MODEL NO. >>**

# RP405

## 3-PHASE **WYE** COMPACT SINGLE STAGE POWER LINE FILTER

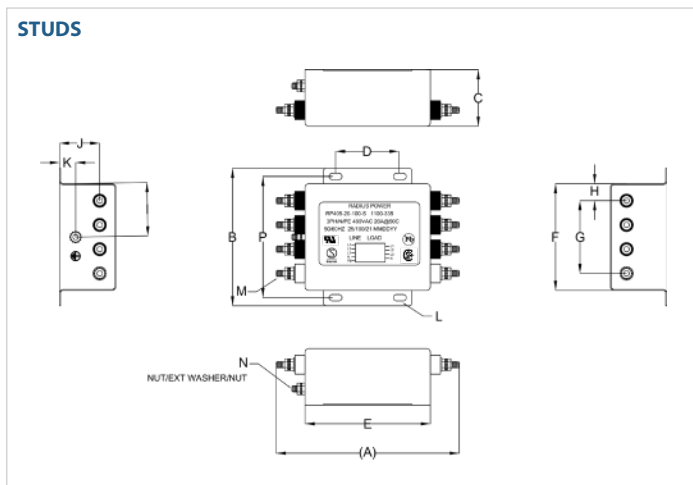
MODEL NO.	RATED CURRENT, A @ 40° C	Y-CAP, nF	LEAKAGE CURRENT mA, @ 480V AC/60 Hz	TERMINAL OPTIONS			MAX. DIMENSIONS" (MM)		
				(W) INPUT/OUTPUT	(S) INPUT/OUTPUT	(C) INPUT/OUTPUT	WIDTH	(LENGTH)	HEIGHT
RP405-30-1000-S	30	1000	10.00		✓		4.25"(108)	5.71"(145)	1.75"(45)
RP405-30-1000-W	30	1000	10.00	✓			*	*	*
RP405-40-0-C	40	0	-			✓	*	*	*
RP405-40-0-S	40	0	-		✓		4.25"(108)	5.71"(145)	1.75"(45)
RP405-40-0-W	40	0	-	✓			*	*	*
RP405-40-10-C	40	10	0.10			✓	*	*	*
RP405-40-10-S	40	10	0.10		✓		4.25"(108)	5.71"(145)	1.75"(45)
RP405-40-10-W	40	10	0.10	✓			*	*	*
RP405-40-100-C	40	100	1.00			✓	*	*	*
RP405-40-100-S	40	100	1.00		✓		4.25"(108)	5.71"(145)	1.75"(45)
RP405-40-100-W	40	100	1.00	✓			*	*	*
RP405-40-1000-C	40	1000	10.00			✓	*	*	*
RP405-40-1000-S	40	1000	10.00		✓		4.25"(108)	5.71"(145)	1.75"(45)
RP405-40-1000-W	40	1000	10.00	✓			*	*	*

\*Contact factory for dimensions.

# RP405

## 3-PHASE WYE COMPACT SINGLE STAGE POWER LINE FILTER

### RP405 MECHANICAL OUTLINES (MM)



SERIES	(A)	B	C	D	E	F	G	H	I	J	K	L	M	N	O	P
<b>STUDS</b>	5.71" (145)	4.25" (108)	1.75" (45)	1.97" (50)	3.90" (99)	3.30" (84)	2.25" (57)	0.52" (13)	1.65" (42)	1.25" (32)	0.50" (13)	Ø 0.40" Ø, 10.2x5.1, 4x	STUD, M5, 8x	STUD, GND, M5	N/A	3.63" (92)

TYPICAL TOLERANCE: +/-0.02" (0.50MM)

### TYPICAL INSERTION LOSS, dB (50/50 Ohm)

Amps	Freq (MHz)	0.15	0.5	1.0	10	30
<b>6</b>	CM (dB)	67	70	70	55	50
	DM (dB)	52	70	75	75	65
<b>10</b>	CM (dB)	60	70	70	55	50
	DM (dB)	45	70	75	75	65
<b>20</b>	CM (dB)	58	62	65	50	50
	DM (dB)	45	55	60	60	50
<b>30</b>	CM (dB)	58	68	70	55	50
	DM (dB)	46	65	70	70	65
<b>40</b>	CM (dB)	57	65	70	55	50
	DM (dB)	45	65	70	70	65