

## 20-000 Series

### Product Facts

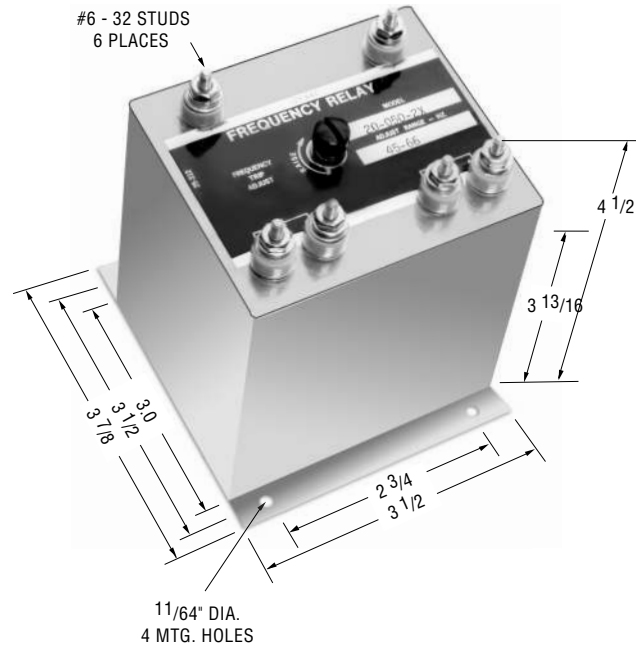
■ **Function 81 0**



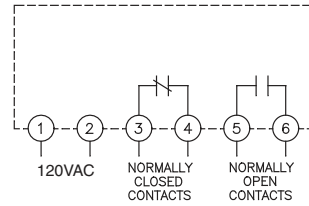
The output contacts of frequency relays are energized when the frequency exceeds the adjustable set point. Overfrequency and underfrequency relays are available in 50, 60 and 400Hz. Combination over/underfrequency “band pass” relays are also available. These are energized at rated frequency and de-energized during overfrequency or underfrequency conditions. Frequency Differential relays are energized between the preset frequencies. The pick-up and drop-out frequency settings are independently adjustable.

### Operation

The normally open contacts close, and the normally closed contacts open, at all frequencies above the set point. The contacts in the connection diagram, are shown in the de-energized position (below the trip set point).



**Note:** Dimensions in inches. Multiply values by 25.4 for dimensions in mm.



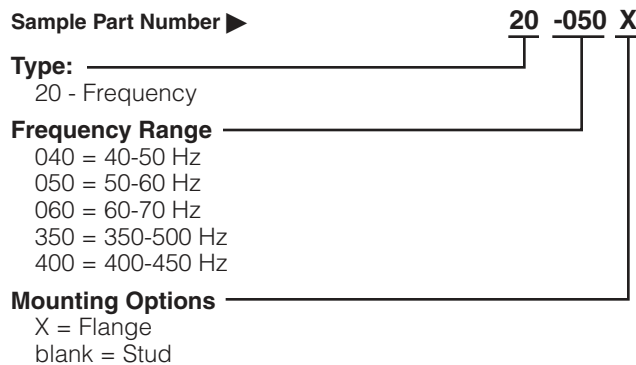
### Product Specifications

- Input Voltage ( $\pm 10\%$ )** — 120 VAC, Single Phase
- Frequencies Range (adjustable)** — See Ordering Information
- Differential** — Frequency pick-up to drop-out differential is 1% max
- Temperature Range** —  $-40^{\circ}\text{C}$  to  $+85^{\circ}\text{C}$
- Temperature Drift** —  $\pm 1\%$  frequency error over temperature range
- Voltage Error** —  $\pm 1\%$  for input voltage of 120 VAC  $\pm 10\%$
- Contact Ratings** — 5 amp resistive at 120 VAC or 28 VDC
- Output Contacts** — One set N.O., one set N.C.

### Notes:

1. Remove screw for access to trip adjustment.

### Ordering Information



**Consult factory for additional models.**