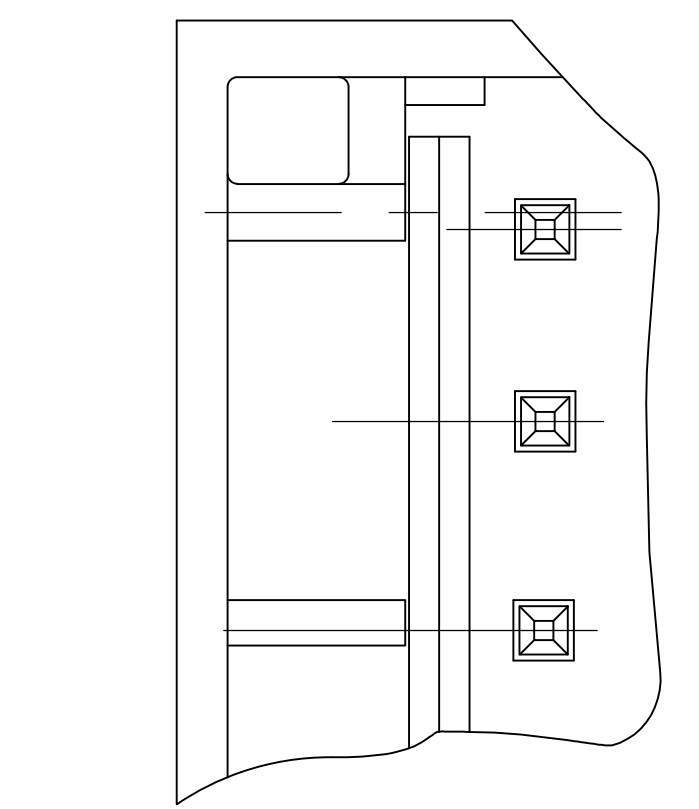
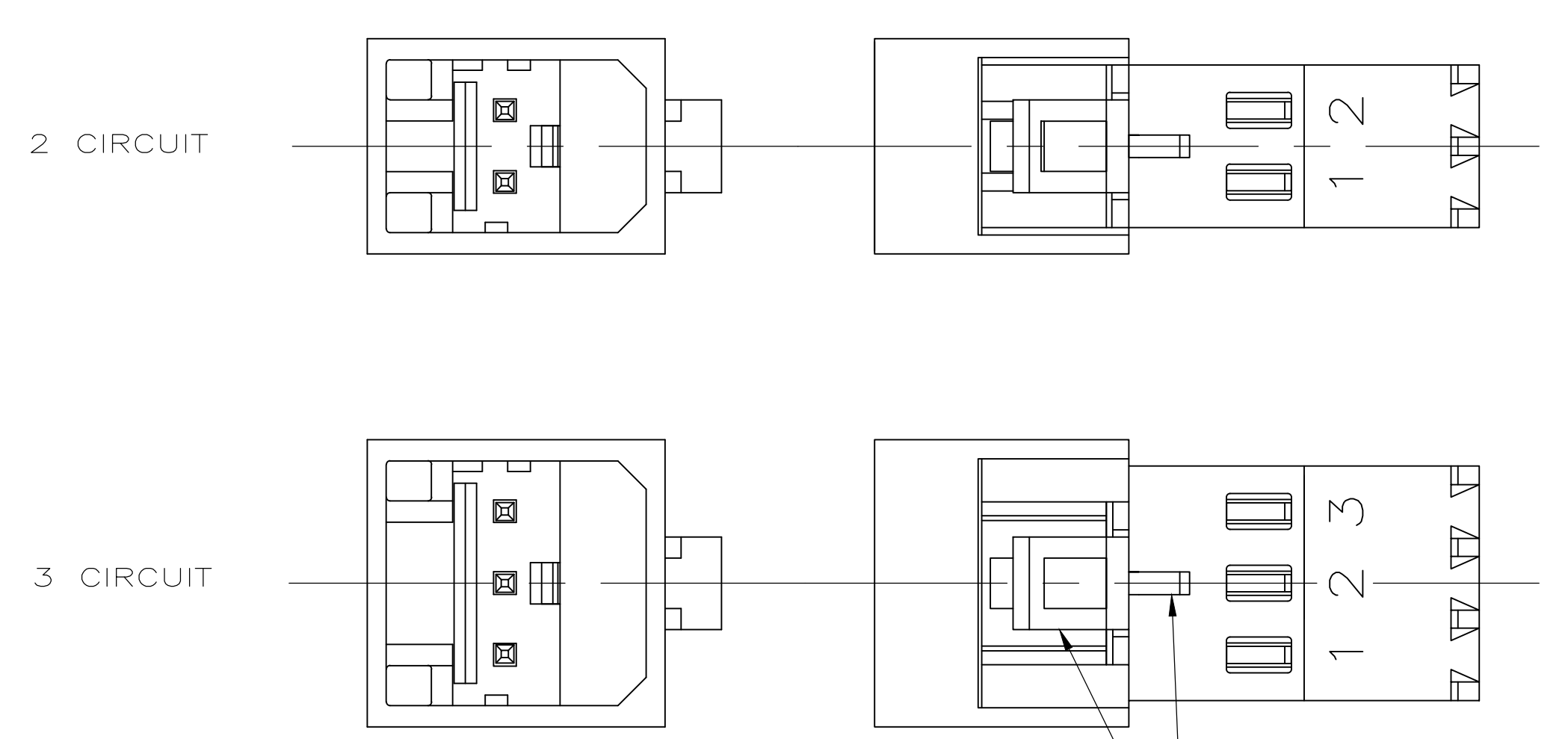
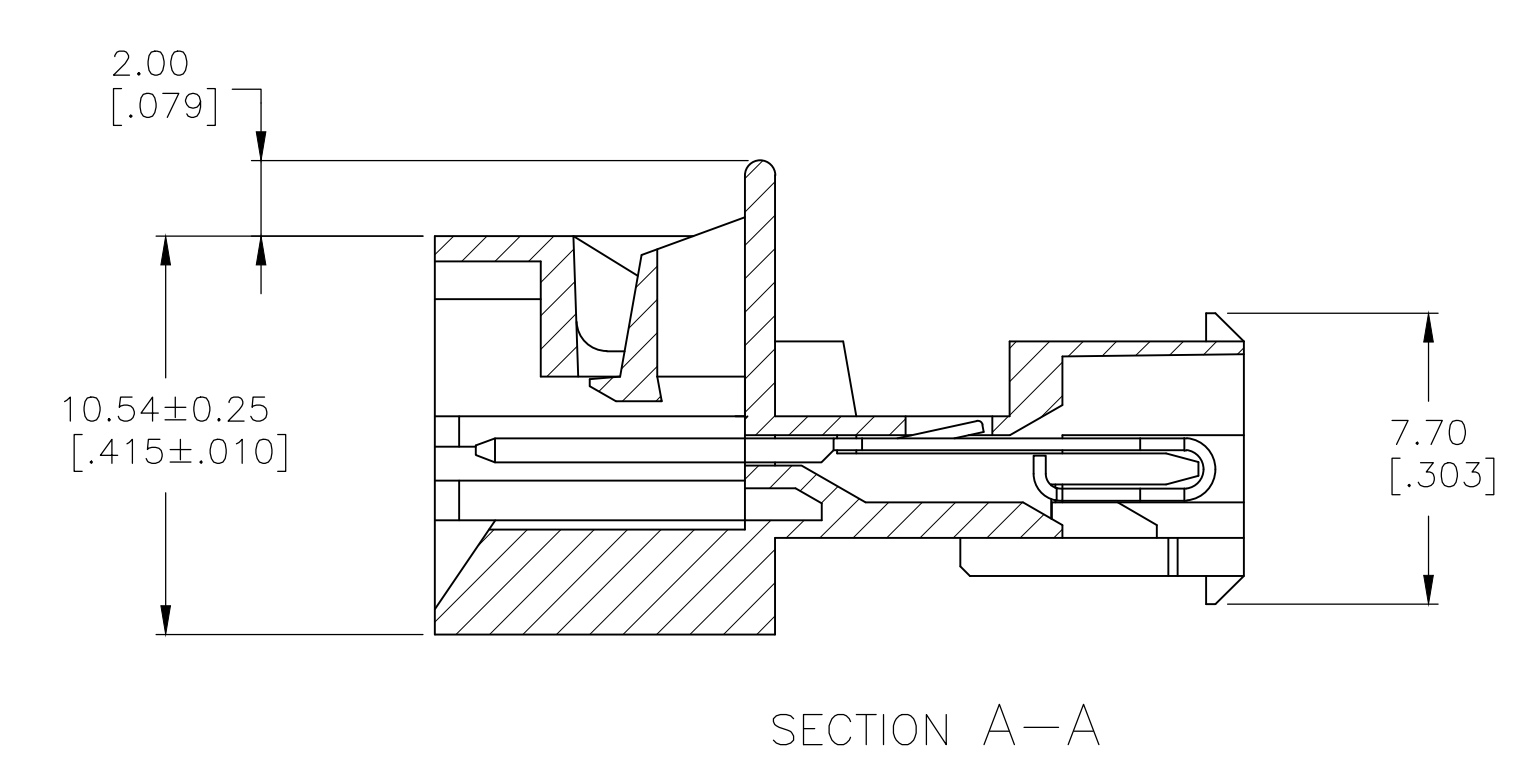
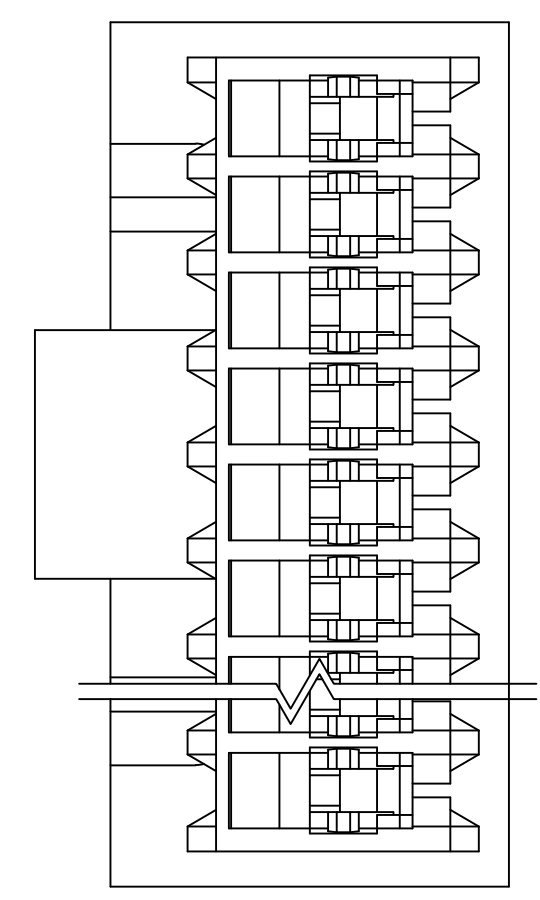
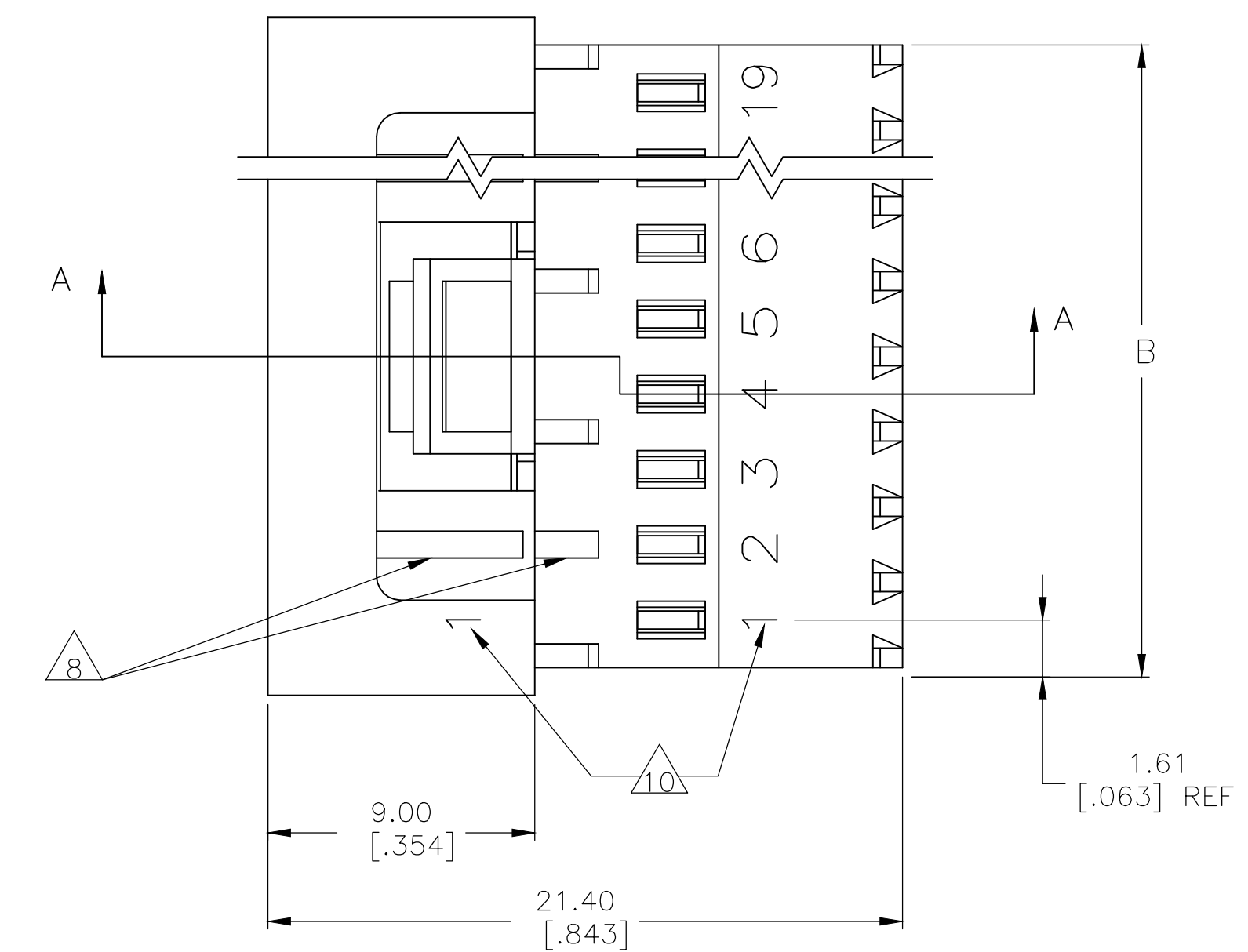
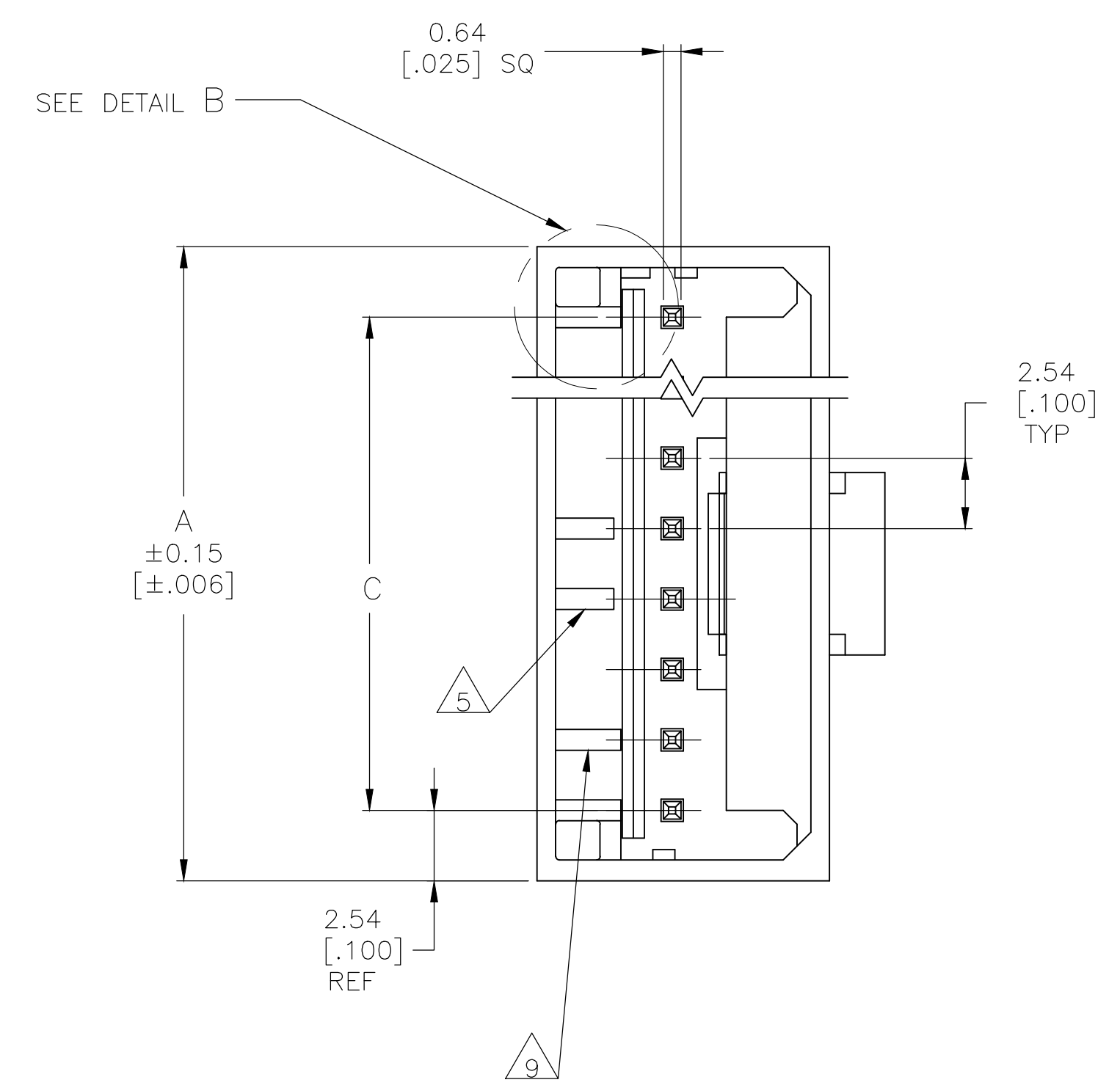


LOC		DIST		REVISIONS			
CM	00	REV	DATE	BY	APPV	REV	DATE
G		REVISED PER ECR-20-000808	26MAY2020	PC	SW		



DETAIL B  
SCALE 10:1  
ALTERNATE CONFIGURATION

- 1 MATERIAL:  
HOUSING- NYLON UL94V-2 (BLUE).  
CONTACTS- 0.30 [.012] THK COPPER ALLOY  
DUAL PLATING: PLATING: GOLD PLATE AREA, 0.00038 [.000015]GOLD OR  
0.00008 [.000003] MIN GOLD FLASH OVER 0.00030 [.000012] PALLADIUM  
NICKEL, PER TE CONNECTIVITY'S DISCRETION,  
ONPOST, BRIGHT TIN-LEAD 0.00203 [.000080] MIN THK 647016-2 THRU  
1-647016-9 OR MATTE TIN 0.00203 [.000080] MIN THK. FOR  
3-647016-2 THRU 4-647016-9 ON WIRE SLOT, WITH NICKEL  
UNDERPLATE 0.00127[.000050] MIN THK ALL OVER.
- 2 CONTACTS ACCEPT 22 AWG (0.12-0.15 mm<sup>2</sup>) TIN PLATED  
SOLID,CONCENTRIC FUSED STRANDED, OR  
CONCENTRIC STRANDED (7 AND 19 STRAND) WIRE  
WITH 1.52 [.060] MAX INSULATION DIAMETER.
- 3 MATES WITH STANDARD MTA-100 CONNECTORS:  
OF THE SAME CIRCUIT SIZES  
WITH SIMILARLY PLATED CONTACTS  
WITH POLARIZING TABS-CIRCUIT SIZES 4-19 ONLY  
WITHOUT POLARIZING TABS-CIRCUIT SIZES 2 & 3.  
  
DOES NOT MATE WITH MTA-100 CONNECTORS:  
WITH POLARIZING TABS-CIRCUIT SIZES 2 & 3 ONLY.  
(SEE DETAIL A)  
WITH BLOCKED CIRCUITS -ALL CIRCUIT SIZES.  
NOT RECOMMENDED FOR MATING WITH MTA-100  
CONNECTOR WITHOUT POLARIZING TABS.  
CIRCUIT SIZES 4-19.
- 4 ACCESSORIES:  
REPLACEMENT IDC CONTACTS: 647030-2.  
COVERS: SEE TABLE
- 5 QUANTITY OF CENTRALLY POSITIONED RAILS  
VARIES WITH CIRCUIT SIZE. (SEE TABLE)  
LOCATION MAY DIFFER FROM EXAMPLE SHOWN.
- 6 DIMENSIONS IN BRACKETS ARE IN INCHES.
- 7 SIMILAR SIZED LOCK AND SINGLE TAB USED  
OR CIRCUITS 4 & 5.
- 8 QUANTITY OF GUSSET RIBS VARIES WITH  
CIRCUIT SIZE (SEE TABLE).  
LOCATION MAY DIFFER FROM EXAMPLE SHOWN.
- 9 INNER END RAIL PAIR NOT PRESENT FOR  
CIRCUIT SIZES 2 OR 3.
- 10 CIRCUIT ID MAY APPEAR FULLY NUMBERED OR SHOWING  
LOCATION 1 ONLY DEPENDING ON CIRCUIT SIZE.
- 11 OBSOLETE PARTS: OBSOLETE CIS STREAMLINING PER D.RENAUD/D.SINISI

THIS DRAWING IS A CONTROLLED DOCUMENT.		DIN R. LEWIS 30--98	
DIMENSIONS: mm [INCHES]		CHK R. SWING 30--98	
TOLERANCES UNLESS OTHERWISE SPECIFIED:		APVD J. ELLIS 30--98	NAME MTA-100 POSTED CONNECTOR ASSEMBLY, CLOSED END, 26 AWG
0 PLC ± -	1 PLC ± -	2 PLC ± 0.20 [.007]	APPLICATION SPEC
3 PLC ± -	4 PLC ± -	ANGLES ± -	SIZE A1
MATERIAL	FINISH	WEIGHT	CAGE CODE 00779
CUSTOMER DRAWING		DRAWING NO 647018	RESTRICTED TO
SCALE 5:1		SHEET 1 OF 2	REV G

QTY OF GUSSET RIBS	QTY OF CENTRAL RAILS	MM	IN	MM	IN	MM	IN	NO. OF CIRCUITS	PART NO
4	2	45.72	1.800	48.95	1.927	50.80	2.000	19	4-647018-9
4	2	43.18	1.700	46.41	1.827	48.26	1.900	18	4-647018-8
4	2	40.64	1.600	43.86	1.727	45.72	1.800	17	4-647018-7
4	2	38.10	1.500	41.32	1.627	43.18	1.700	16	4-647018-6
4	2	35.56	1.400	38.78	1.527	40.64	1.600	15	4-647018-5
4	2	33.02	1.300	36.24	1.427	38.10	1.500	14	4-647018-4
4	2	30.48	1.200	33.70	1.327	35.56	1.400	13	4-647018-3
2	1	27.94	1.100	31.16	1.227	33.02	1.300	12	4-647018-2
2	1	25.40	1.000	28.62	1.127	30.48	1.200	11	4-647018-1
2	1	22.86	.900	26.08	1.027	27.94	1.100	10	4-647018-0
2	1	20.32	.800	23.54	.927	25.40	1.000	9	3-647018-9
2	0	17.78	.700	21.00	.827	22.86	.900	8	3-647018-8
0	0	15.24	.600	18.46	.727	20.32	.800	7	3-647018-7
0	0	12.70	.500	15.92	.627	17.78	.700	6	3-647018-6
0	0	10.16	.400	13.38	.527	15.24	.600	5	3-647018-5
0	0	7.62	.300	10.84	.427	12.70	.500	4	3-647018-4
0	0	5.08	.200	8.30	.327	10.16	.400	3	3-647018-3
0	0	2.54	.100	5.76	.227	7.62	.300	2	3-647018-2
4	2	45.72	1.800	48.95	1.927	50.80	2.000	19	1-647018-9
4	2	43.18	1.700	46.41	1.827	48.26	1.900	18	1-647018-8
4	2	40.64	1.600	43.86	1.727	45.72	1.800	17	1-647018-7
4	2	38.10	1.500	41.32	1.627	43.18	1.700	16	1-647018-6
4	2	35.56	1.400	38.78	1.527	40.64	1.600	15	1-647018-5
4	2	33.02	1.300	36.24	1.427	38.10	1.500	14	1-647018-4
4	2	30.48	1.200	33.70	1.327	35.56	1.400	13	1-647018-3
2	1	27.94	1.100	31.16	1.227	33.02	1.300	12	1-647018-2
2	1	25.40	1.000	28.62	1.127	30.48	1.200	11	1-647018-1
2	1	22.86	.900	26.08	1.027	27.94	1.100	10	1-647018-0
2	1	20.32	.800	23.54	.927	25.40	1.000	9	647018-9
2	0	17.78	.700	21.00	.827	22.86	.900	8	647018-8
0	0	15.24	.600	18.46	.727	20.32	.800	7	647018-7
0	0	12.70	.500	15.92	.627	17.78	.700	6	647018-6
0	0	10.16	.400	13.38	.527	15.24	.600	5	647018-5
0	0	7.62	.300	10.84	.427	12.70	.500	4	647018-4
0	0	5.08	.200	8.30	.327	10.16	.400	3	647018-3
0	0	2.54	.100	5.76	.227	7.62	.300	2	647018-2

▲ SUPERCEDED 1-640642-9 1-643077-9 4 2 45.72 1.800 48.95 1.927 50.80 2.000 19 1-647018-9  
 ▲ SUPERCEDED 1-640642-8 1-643077-8 4 2 43.18 1.700 46.41 1.827 48.26 1.900 18 1-647018-8  
 ▲ SUPERCEDED 1-640642-7 1-643077-7 4 2 40.64 1.600 43.86 1.727 45.72 1.800 17 1-647018-7  
 ▲ SUPERCEDED 1-640642-6 1-643077-6 4 2 38.10 1.500 41.32 1.627 43.18 1.700 16 1-647018-6  
 ▲ SUPERCEDED 1-640642-5 1-643077-5 4 2 35.56 1.400 38.78 1.527 40.64 1.600 15 1-647018-5  
 ▲ SUPERCEDED 1-640642-4 1-643077-4 4 2 33.02 1.300 36.24 1.427 38.10 1.500 14 1-647018-4  
 ▲ SUPERCEDED 1-640642-3 1-643077-3 4 2 30.48 1.200 33.70 1.327 35.56 1.400 13 1-647018-3  
 ▲ SUPERCEDED 1-640642-2 1-643077-2 2 1 27.94 1.100 31.16 1.227 33.02 1.300 12 1-647018-2  
 ▲ SUPERCEDED 1-640642-1 1-643077-1 2 1 25.40 1.000 28.62 1.127 30.48 1.200 11 1-647018-1  
 ▲ SUPERCEDED 1-640642-0 1-643077-0 2 1 22.86 .900 26.08 1.027 27.94 1.100 10 1-647018-0  
 ▲ SUPERCEDED 640642-9 643077-9 2 1 20.32 .800 23.54 .927 25.40 1.000 9 647018-9  
 ▲ SUPERCEDED 640642-8 643077-8 2 0 17.78 .700 21.00 .827 22.86 .900 8 647018-8  
 ▲ SUPERCEDED 640642-7 643077-7 0 0 15.24 .600 18.46 .727 20.32 .800 7 647018-7  
 ▲ SUPERCEDED 640642-6 643077-6 0 0 12.70 .500 15.92 .627 17.78 .700 6 647018-6  
 ▲ SUPERCEDED 640642-5 643077-5 0 0 10.16 .400 13.38 .527 15.24 .600 5 647018-5  
 ▲ SUPERCEDED 640642-4 643077-4 0 0 7.62 .300 10.84 .427 12.70 .500 4 647018-4  
 ▲ SUPERCEDED 640642-3 643077-3 0 0 5.08 .200 8.30 .327 10.16 .400 3 647018-3  
 ▲ SUPERCEDED - 643077-2 0 0 2.54 .100 5.76 .227 7.62 .300 2 647018-2

DUST COVER	STRAIN RELIEF COVERS	QTY OF GUSSET RIBS	QTY OF CENTRAL RAILS	MM	IN	MM	IN	MM	IN	NO. OF CIRCUITS	PART NO
4	ACCESSORIES	8	5	C		B		A			

THIS DRAWING IS A CONTROLLED DOCUMENT. DIN B LEWIS 30-98  
 CJK R SWING 30-98  
 J. ELLIS 30-98 NAME  
 PRODUCT SPEC  
 APPLICATION SPEC  
 WEIGHT  
 CUSTOMER DRAWING

MTA-100 POSTED CONNECTOR ASSEMBLY, CLOSED END, 26 AWG

SCALE 1:1 SHEET 2 OF 2 REV G