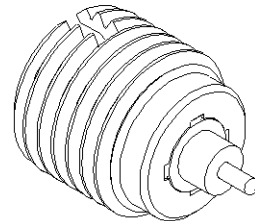
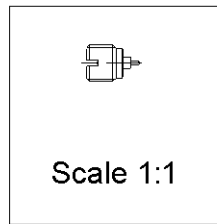
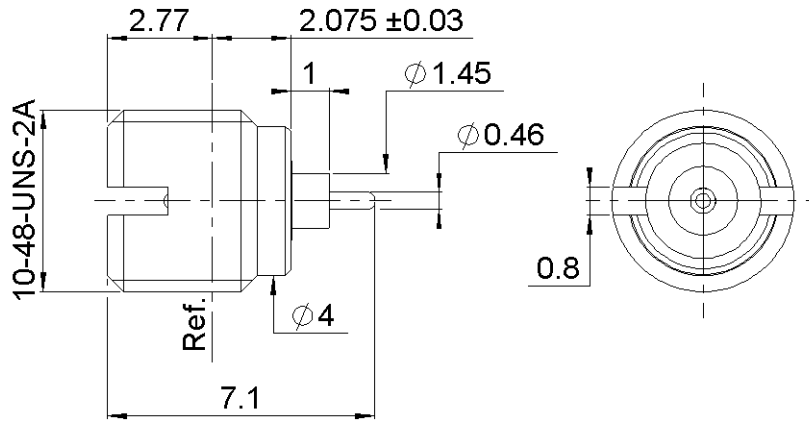
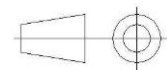


PAGE 1/3	ISSUE 04-05-16B	SERIES SMP	PART NUMBER R222561301
----------	-----------------	------------	------------------------



All dimensions are in mm.



COMPONENTS	MATERIALS	PLATING (µm)
Body	STAINLESS STEEL	PASSIVATED
Center contact	BERYLLIUM COPPER	GOLD OVER NICKEL
Outer contact	-	-
Insulator	PTFE	-
Gasket	-	-
Others parts	-	-
-	-	-
-	-	-

PAGE 2/3	ISSUE 04-05-16B	SERIES SMP	PART NUMBER R222561301
----------	------------------------	-------------------	-------------------------------

PACKAGING

Standard	Unit	Other
100	Contact us	Contact us

ELECTRICAL CHARACTERISTICS

Impedance		50	Ω	
Frequency		0-12	GHz	
VSWR	1.3	+	0,0000	x F(GHz) Maxi
Insertion loss			0.12	√F(GHz) dB Maxi
RF leakage	-		NA	- F(GHz) dB Maxi
Voltage rating			335	Veff Maxi
Dielectric withstanding voltage			500	Veff mini
Insulation resistance			5000	MΩ mini

ENVIRONMENTAL

Operating temperature	-65/+165	°C
Hermetic seal	NA	Atm.cm3/s
Panel leakage	NA	

MECHANICAL CHARACTERISTICS

Center contact retention				
Axial force – Mating End		NA	N mini	
Axial force – Opposite end		NA	N mini	
Torque		NA	N.cm mini	
Recommended torque				
Mating		NA	N.cm	
Panel nut		90	N.cm	
Mating life		500	Cycles mini	
Weight		0,3000	g	

SPECIFICATION

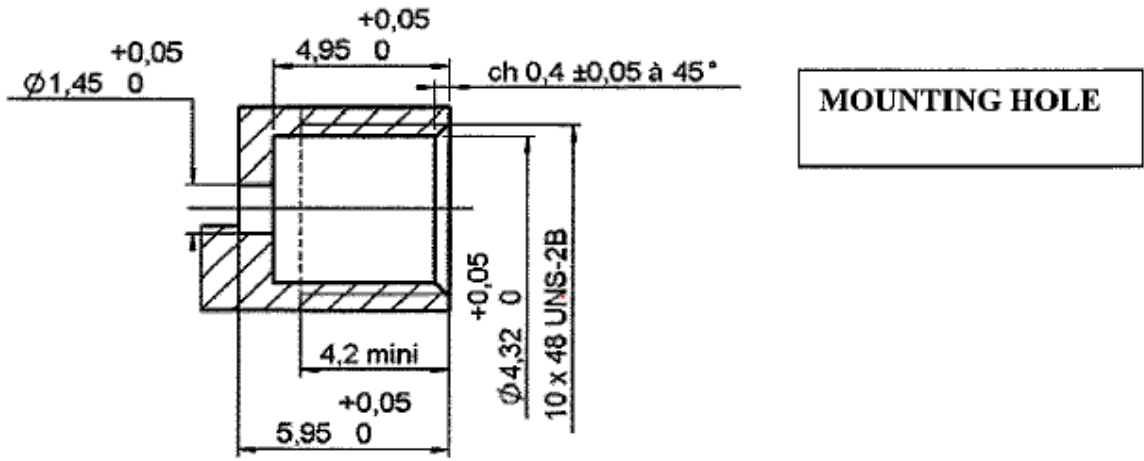
OTHER CHARACTERISTICS

Assembly instruction:

Others:
See page 3

PAGE 3/3	ISSUE 04-05-16B	SERIES SMP	PART NUMBER R222561301
----------	-----------------	------------	------------------------

ADDITIONAL INFORMATIONS
MOUNTING AND REPLACEMENT INSTRUCTIONS



- 1) Connector must be screwed or unscrewed with adapted torque driver R282.339.002 (recommended coupling torque: 90 N.cm)
- 2) Slide on the connector in F direction until it stops against the tool.

- 3) Screw the whole into the housing until activation of the torque driver.
- 4) Withdraw the tool and solder the center contact.

