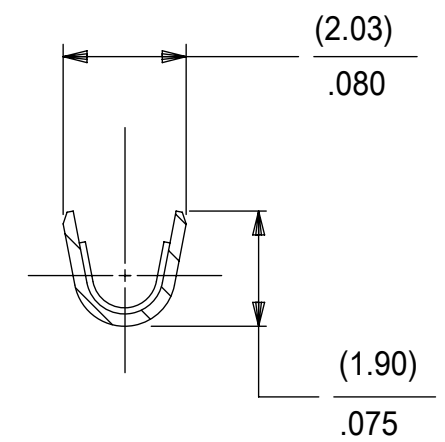
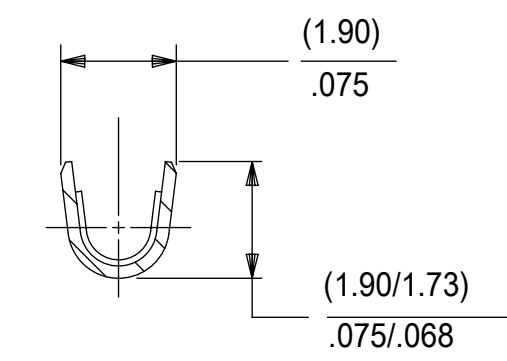
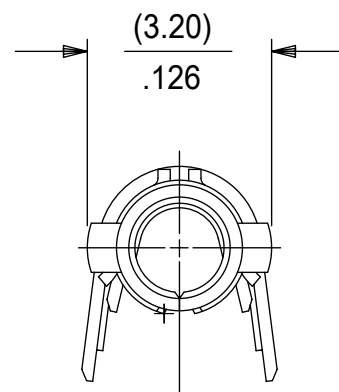
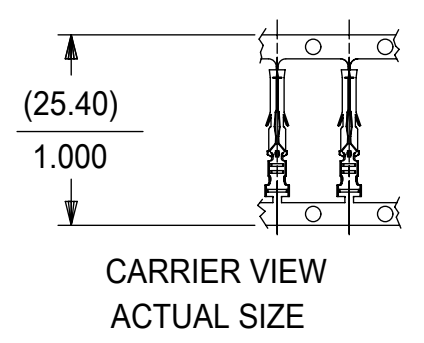


| PART NO. | ENG. NO. | PACKAGING |
|------------|---------------|-------------|
| 02-06-1131 | 1855-(P901) | 18550000-PK |
| 02-06-1132 | 1855-(P901)L | PK-1190-003 |
| 02-06-5130 | 1855-(P550) | 18550000-PK |
| 02-06-5135 | 1855-(P550)L | PK-1190-003 |
| 02-06-1141 | 1855-1(P901) | 18550000-PK |
| NOT TOOLED | 1855-1(P901)L | PK-1190-003 |



LEGEND

1855-*(****)*

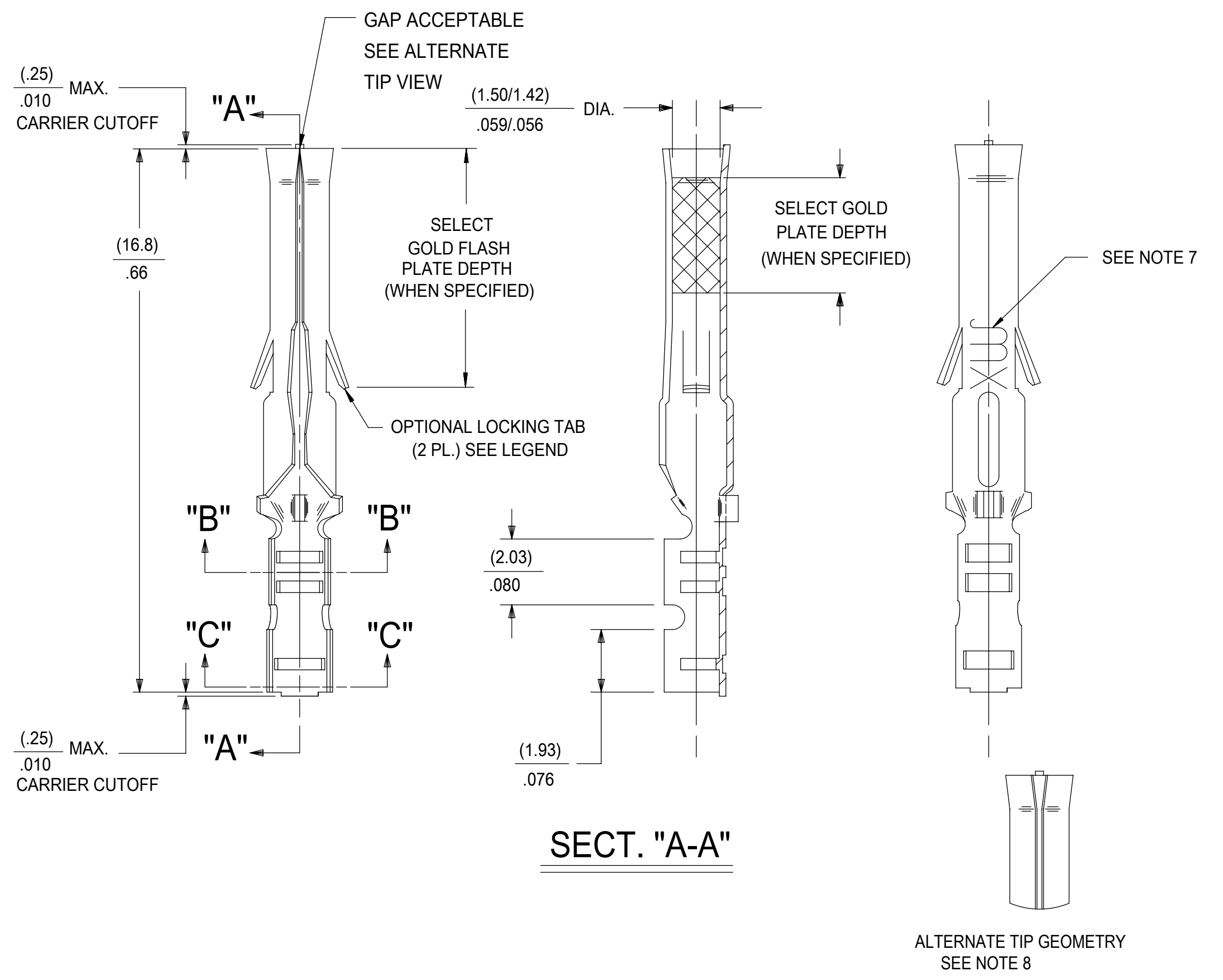
BLANK=WITH LOCKING TABS
1=WITHOUT LOCKING TABS

P=PREPLATE
BLANK=POSTPLATE

FORM
BLANK=CHAIN
1=CHAIN WITH INTERLEAF
PAPER ON REEL.
L=LOOSE
FINISH CODE

NOTES:

- MATERIAL: BRASS
- FINISHES:
 - 901 HOT TIN DIP (.00051)/.000020 MIN.
 - 228 SELECT GOLD PLATE (.00075/.000030 MIN. IN CONTACT AREA, SELECT TIN (.00250)/.000100 MIN. IN CRIMP AREA OVER (.00125)/.000050 MIN. NICKEL OVERALL
 - 561 SELECT GOLD PLATE (.00076)/.000030 MIN. IN CONTACT AREA, (.00127)/.000050 MIN. NICKEL OVERALL.
 - 550 SELECT GOLD PLATE (.00038)/.000015 MIN. IN CONTACT AREA, OVER (.00076)/.000030 MIN. NICKEL OVERALL WITH (.00025)/.000010 MAX. GOLD FLASH OVERALL.
- PRODUCT SPECIFICATION: PS-02-06
- PACKAGE INFORMATION: SEE CHART
- TERMINAL FOR USE WITH (1.57)/.062 DIA. SERIES HOUSINGS AND WILL ACCEPT 24 THRU 30 AWG WIRE WITH (1.02/2.29)/.040/.090 INSULATION DIAMETER.
- PARTS CONFORM TO CLASS B REQUIREMENTS OF COSMETIC SPECIFICATION PS-45499-002.
- MARKING MAY VARY ON PARTS, CONSULT FACTORY.
- TIP GEOMETRY IS TOOL DEPENDENT. EITHER GEOMETRY IS ACCEPTABLE.



| | | | | | | | | | |
|-----------------------------------------------------------------------------------------------------------------------------------------------|--------|---------|--|-------------------------------------------------------------------------------------------------------------------------------------------------------------------------------------------------------------------------------------------------------------------------------------------------------------|--|---------|--|--------|--|
| THIS DRAWING CONTAINS INFORMATION THAT IS PROPRIETARY TO MOLEX ELECTRONIC TECHNOLOGIES, LLC AND SHOULD NOT BE USED WITHOUT WRITTEN PERMISSION | | | | | | | | | |
| DIMENSION UNITS | | SCALE | | CURRENT REV DESC: REMOVE 46999-0998 | | | | | |
| MM/IN | | NTS | | <p>molex</p> <p>CRIMP TERMINAL, FEMALE (1.57)/.062 DIA., BRASS FOR 24 THRU 30 GA. WIRE</p> <p>PRODUCT CUSTOMER DRAWING</p> <p>DOCUMENT NUMBER: SD-1855-X DOC TYPE: PSD DOC PART: 001 REVISION: AP6</p> <p>MATERIAL NUMBER: SEE TABLE CUSTOMER: GENERAL MARKET SHEET NUMBER: 1 OF 1</p> | | | | | |
| GENERAL TOLERANCES (UNLESS SPECIFIED) | | | | | | | | | |
| | MM | INCH | | | | | | | |
| 4 PLACES | ± | ± | | | | | | | |
| 3 PLACES | ± | ± 0.01 | | | | | | | |
| 2 PLACES | ± 0.25 | ± 0.014 | | | | | | | |
| 1 PLACE | ± 0.35 | ± | | | | | | | |
| 0 PLACES | ± | ± | | | | | | | |
| ANGULAR TOL ± 0.5 ° | | | | <p>EC NO: 742179</p> <p>DRWN: MKIPPER 2023/03/01</p> <p>CHK'D: MKIPPER 2023/03/13</p> <p>APPR: FSMITH 2023/03/13</p> <p>INITIAL REVISION:</p> <p>DRWN: GEP 1987/09/17</p> <p>APPR: RAS 1987/09/17</p> | | | | | |
| DRAFT WHERE APPLICABLE MUST REMAIN WITHIN DIMENSIONS | | | | THIRD ANGLE PROJECTION | | DRAWING | | SERIES | |
| | | | | C-SIZE | | 1855 | | | |

| | | | | |
|-----------------|----|--------------|------------|----------|
| DOCUMENT STATUS | P1 | RELEASE DATE | 2023/03/13 | 23:35:27 |
|-----------------|----|--------------|------------|----------|