

PART NUMBER	REV	FEED TYPE	DESCRIPTION	PROGRAMMED MEMORY CHIP
2150001-1	A	MECHANICAL	FINE CRIMP HEIGHT ADJUST	
2150001-2	A	PNEUMATIC	FINE CRIMP HEIGHT ADJUST	
2150001-5	A	SERVO	FINE CRIMP HEIGHT ADJUST	8-2150001-5
2150001-6	A	SERVO	NON CRIMP HEIGHT ADJUST	8-2150001-6
2150001-7	A	NONE	FINE CRIMP HEIGHT ADJUST	
7-2150001-7	A	-	SPARE PARTS KIT	-

SUPERSEDED BY 2150236-1
 SUPERSEDED BY 2150236-2
 SUPERSEDED BY 2150236-5
 SUPERSEDED BY 2150236-6
 SUPERSEDED BY 2150236-7

APPLICATOR DATA		
CRIMP	SIZE	TYPE
WIRE	1.57 (.062 in)	F
INSUL	2.03 (.080 in)	F

TERMINAL DATA: TE TERMINAL		TE CRIMP SPEC
TERMINAL NAME: RING TONGUE		
WIRE STRIP LENGTH		INSULATION DIAMETER RANGE
2.70-3.50mm (.109-.140 in)		∅ 1.02-1.52mm (.040-.059 in)
TERMINAL APPL SPEC	114-2084	

TERMINALS APPLIED			
42547-1	42547-2	60007-2	-
-	-	-	-

WIRE SIZE	CRIMP HEIGHT mm [INCH]	FINE ADJUST REF SETTING
22AWG	1.04±.05 [.041±.002]	6.9
24AWG	0.97±.05 [.038±.002]	7.9
26AWG	0.91±.05 [.036±.002]	8.6

- 1 RECOMMENDED SPARE PARTS
- 2 GREASE BEARING SURFACES LIGHTLY
- 3. LUBRICATE DAILY PER THE APPLICATOR INSTRUCTION SHEET SUPPLIED WITH THE APPLICATOR.
- 4 APPLICATOR SPECIFIC DATA TO BE ENTERED INTO BLANK MEMORY CHIP AT ASSEMBLY.
- 5. ADJUSTMENT OF THE STRIPPER MAY BE REQUIRED WHEN MOVING THE APPLICATOR BETWEEN BENCH AND LEADMAKER APPLICATIONS.
- 6. FOR THE PACIFIC VERSION OF THIS APPLICATOR, SEE LOG 2150001-9
- 7 GREASE THREADS, GROOVE AND O-RING ON ITEMS 35 & 252.
- 8 MAGNET MUST BE ORIENTED CORRECTLY IN ORDER TO PROPERLY ACTUATE THE COUNTER.
- 9 CUT TO LENGTH AT ASSEMBLY.

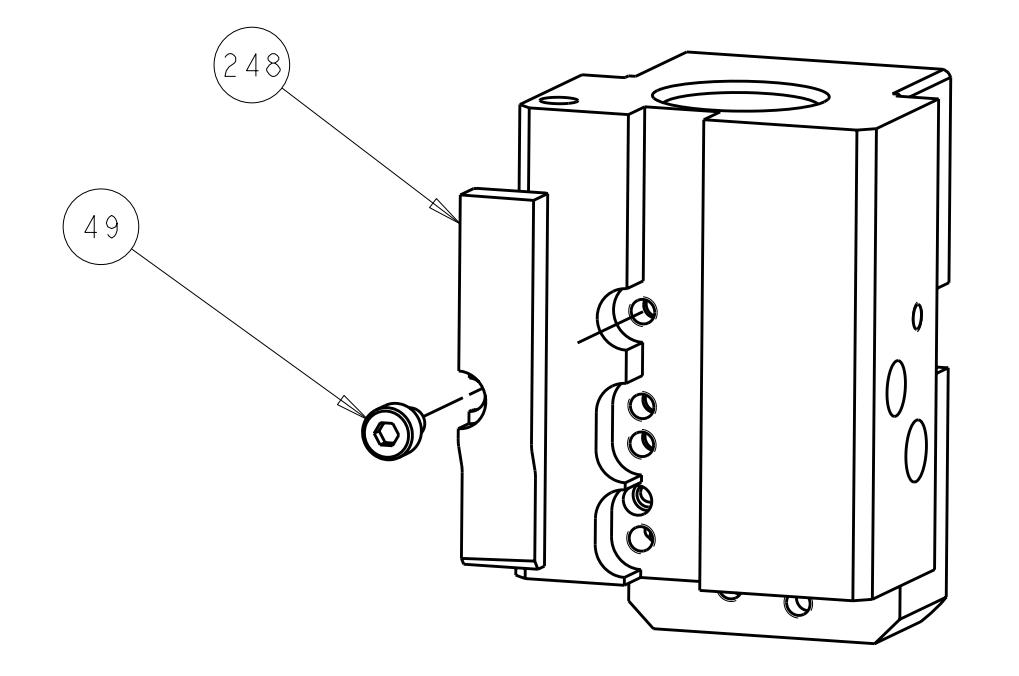
PART REQUIRED FOR FEED CONVERSIONS		
FEED TYPE TO CONVERT TO	RETROFIT KIT	ADDITIONAL PARTS REQ'D
MECHANICAL	2119949-1	56
PNEUMATIC	2119950-1	56
SERVO	2119951-1	135 AND 240

SERVO FEED FINGER 1901697-1		SET UP GAUGE 2119599-2		LOC	DIST	REVISIONS			
P	LTB	DESCRIPTION	DATE	DWN	APVD				
1		ORIGINAL	4MAR2011	GH	GB				
2		-4 IC WAS A-3	23MAR2011	BW	GB				
A		RELEASED	06JUN2011	LG	TE				
A1		ECR-11-018652	08SEP2011	CAM	TE				

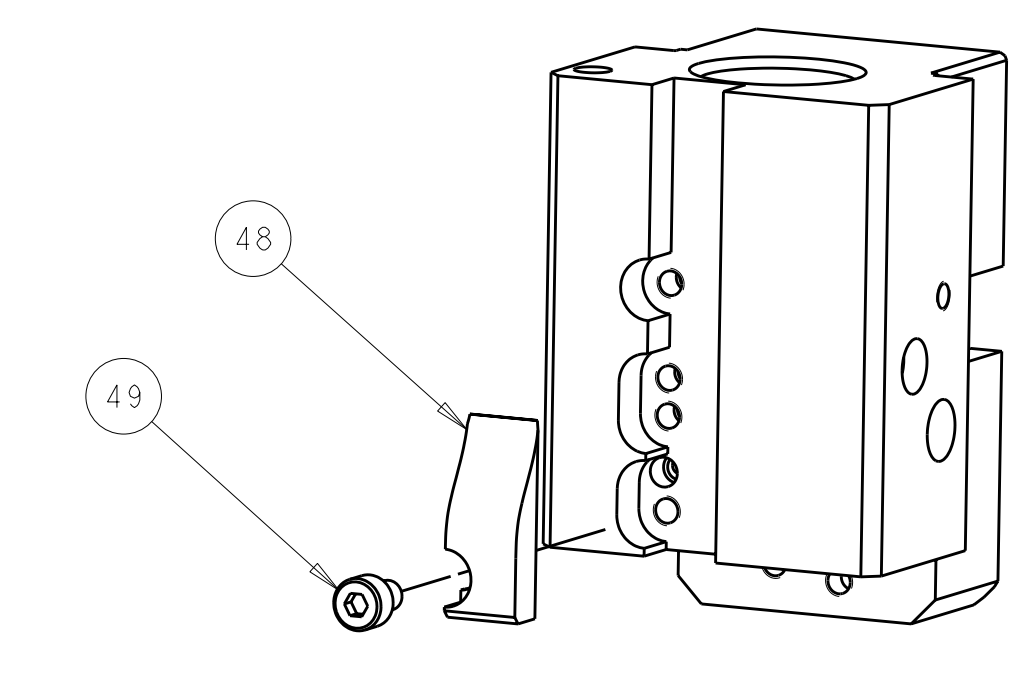
ITEM NO	DESCRIPTION	QTY	UNIT	REMARKS
252	8-21084-0 O-RING, .676 ID, .070 DIA. MAT.			
250	2079988-1 BUSHING, LCH5-12, MISUMI			
249	2119640-1 PUSH ROD, AIR FEED			
248	2119641-1 FEED CAM, AIR FEED			
247	2119798-1 DETENT PIN			
246	1-22279-3 SPRING, COMPRESSION			
245	2119759-1 RAM, AMP STYLE, END FEED, NON-ADJUST			
244	2119082-9 CAM, SNAIL, INSULATION ADJUSTMENT			
243	2079764-1 WASHER, WAVE SPRING, CREST-TO-CREST			
242	2119083-1 RETAINER, INSULATION DIAL			
240	2168084-6 SHCS, LOW HEAD, RoHS, M5 X 16			
239	2119580-1 MECHANICAL FEED ASSEMBLY			
238	2063440-1 AIR FEED MODULE			
172	21045-3 RING, RETAIN, EXTERN, 3/16 CRESCENT			
166	994969-1 MAGNET, RARE EARTH HIGH ENERGY			
163	240638-1 SPRING, FEED FINGER			
137	3-23627-7 PIN, RETAIN, GRVD, 3/16 X .854			
135	SEE TABLE MEMORY CHIP, PROGRAMMED			
133	1633743-1 SERVO FEED LATCH ASM			
82	455888-4 SPACER, CRIMPER			
71	2119956-2 DOCUMENTATION PACKAGE			
67	2119740-1 TAG, IDENTIFICATION			
66	21017-2 SCREW, DRIVE			
63	2119793-1 LIMITER, ADJUSTMENT BOLT			
62	992763-4 SCR, SET, SOC, CONE POINT, M3 x 3.0			
60	2079383-4 SCR, BHSC, RoHS (M4 X 8)			
59	5-18022-5 SCR, HEX HD CAP, M4 X 6.0			
58	2063961-1 FEED FINGER			
56	2168083-5 SCR, SKT HD CAP, RoHS, M4 X 6.0			
55	18030-2 NUT, HEX, REG M4			
54	18030-1 NUT, HEX, REG M3			
53	986965-1 NUT, LOCK, HEX, TORQUE (M4)			
52	2-18032-2 SCR, SET, FLT POINT M3 X 10.0			
51	2119792-2 PAWL, EF, AIR			
49	18023-9 SCR, SKT HD CAP M4 X 6.0			
48	2119652-1 FEED CAM, PRE FEED			
47	2119653-1 FEED CAM, POST FEED			
46	2119655-5 APPLICATOR BASIC ASSEMBLY, EF			
44	2119369-1 RAM, AMP STYLE, END FEED			
41	2079383-7 SCR, BHSC, RoHS (M8 X 25)			
40	2119645-1 DISC, NUMBERED FA WIRE ADJUSTMENT			
39	2119091-4 SHIM, LAMINATE			
38	2119644-1 RAM WASHER, PRECISION			
37	2119085-1 FA HEAD, ATLANTIC STYLE			
35	2119092-1 BOLT, ADJUSTMENT			
33	1-18028-2 WASHER, FLAT, REG M4			
31	2168083-8 SCR, SKT HD CAP, RoHS, M4 X 16			
29	1-2168083-0 SCR, SKT HD CAP, RoHS, M4 X 10			
27	240639-1 STRIPPER (MACHINING)			
25	1320906-1 STUD, THREADED			
24	1752371-1 PLATE, STRIP GUIDE			
22	2-22281-3 SPRING, COMPRESSION			
20	1752373-1 DRAG			
18	1901259-2 GUIDE, LOWER STRIP			
17	1-2079383-1 SCR, BHSC, RoHS (M6 X 12)			
11	240644-1 PLATE, REAR SHEAR			
9	690482-6 PLATE, FRONT SHEAR			
8	1333214-4 ANVIL, EF .062			
7	690474-6 BLADE, SLUG			
4	238009-1 BLOCK, FL CRIMPER SPACER			
3	2119582-4 CRIMPER, INSULATION F PREMIUM			
2	455888-5 SPACER, CRIMPER			
1	1-456403-3 CRIMPER, WIRE PREMIUM			

DIMENSIONS: mm 		TOLERANCES UNLESS OTHERWISE SPECIFIED: 9 PLC ±.5 1 PLC ±0.13 5 PLC ±0.013 4 PLC ±0.001 ANGLES ±.1		DWN: STAKEM 15MAR2011 CHK: G.BALLEY 15MAR2011 APVD: T. ERLIN 15MAR2011		TE Connectivity Harrisburg, PA 17105-3608	
MATERIAL: - FINISH: -		WEIGHT: - SCALE: 1:1		PRODUCT SPEC: - APPLICATION SPEC: - SIZE: A1 00779 C=2150001		RESTRICTED TO: - SHEET 1 OF 2 REV A1	
CUSTOMER ACCESSIBLE PRODUCTION DRAWING							

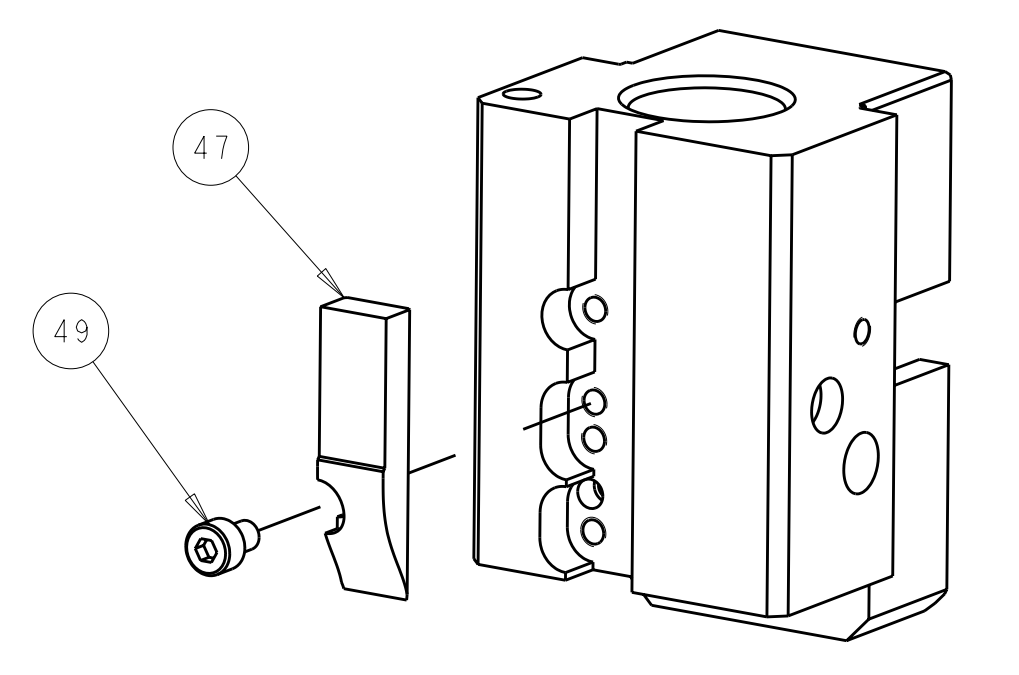
LOC		DIST		REVISIONS			
P	LTB	DESCRIPTION	DATE	DWN	APVD		
-	-	SEE SHEET 1	-	-	-		



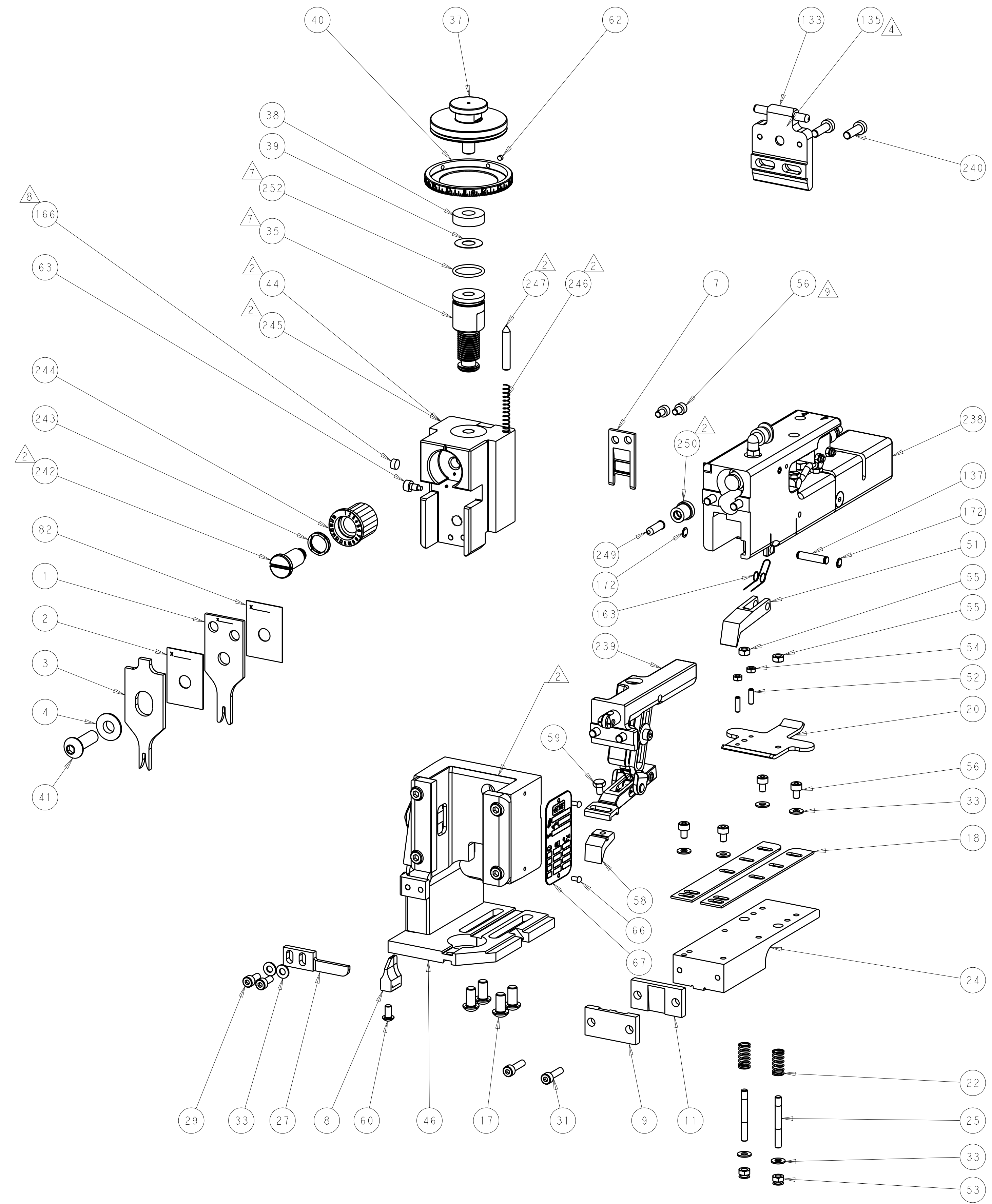
AIR FEED



MECH. PRE FEED



MECH. POST FEED



DIMENSIONS: mm 		TOLERANCES UNLESS OTHERWISE SPECIFIED: 9 PLC ±.5 1 PLC ±0.13 5 PLC ±0.013 4 PLC ±0.0001 ANGLES ±.		DWN R. STAKEM 15MAR2011 CHK G. BAILEY 15MAR2011 APVD T. ELBIN 7MAR2011		NAME Ocean End Feed Atlantic Style Applicator	
MATERIAL - FINISH -		WEIGHT - CUSTOMER ACCESSIBLE PRODUCTION DRAWING		SIZE CAGE CODE DRAWING NO A1 00779 C-2150001		RESTRICTED TO SCALE 1:1 SHEET 2 OF 2 REV A1	