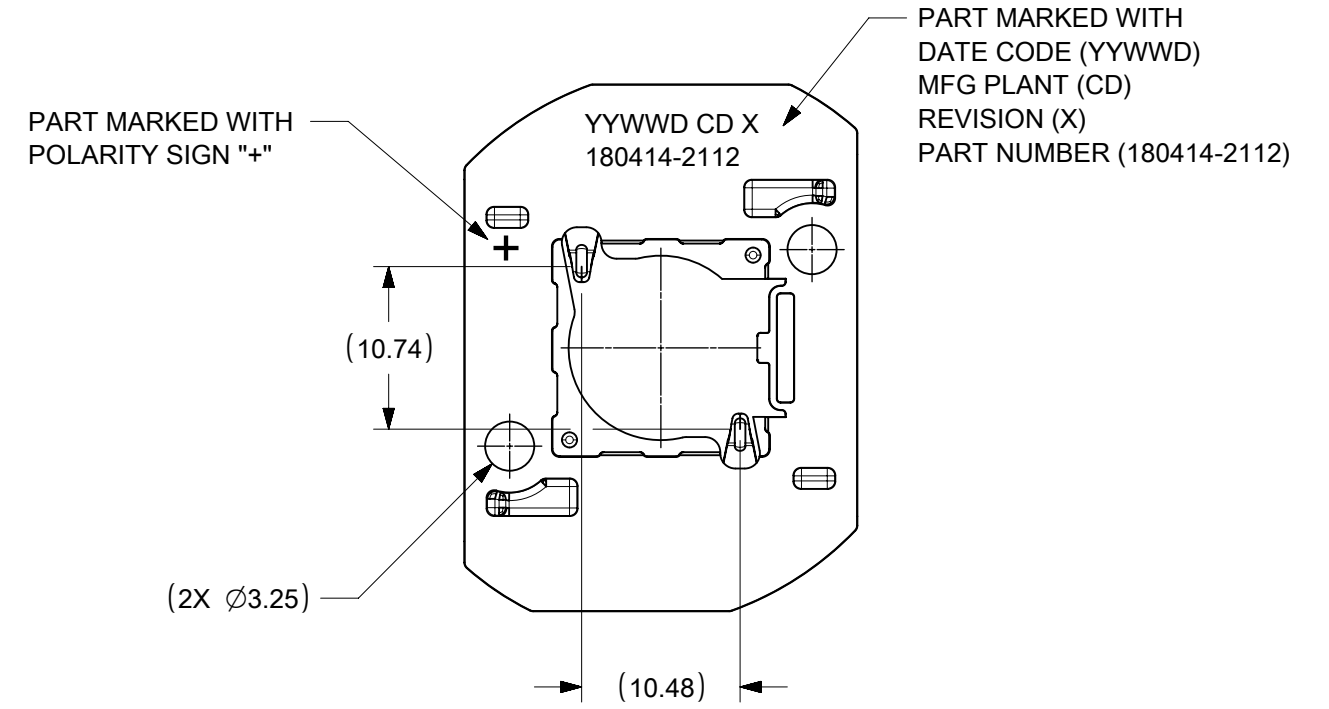
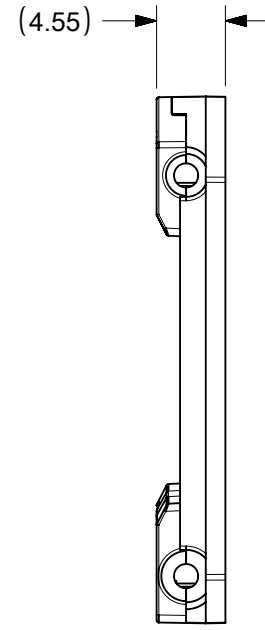
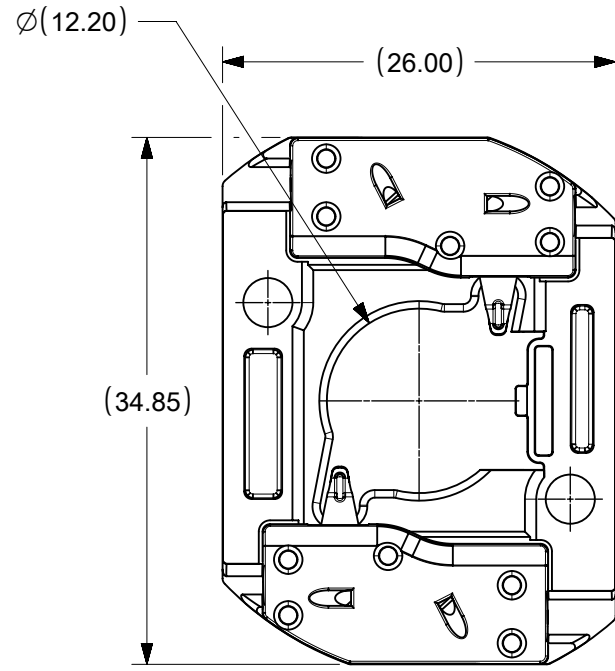


10	9	8	7	6	5	4	3	2	1
PART NUMBER	DESCRIPTION	POCKET DEPTH	HOUSING	TERMINAL	CAP				
180414-2112	COB LED HOLDER ASSEMBLY	0.75	180413-2112	180155-0133	180154-0105				

P/N 180414-2112 HOLDER ASSEMBLY (0.75 POCKET DEPTH)

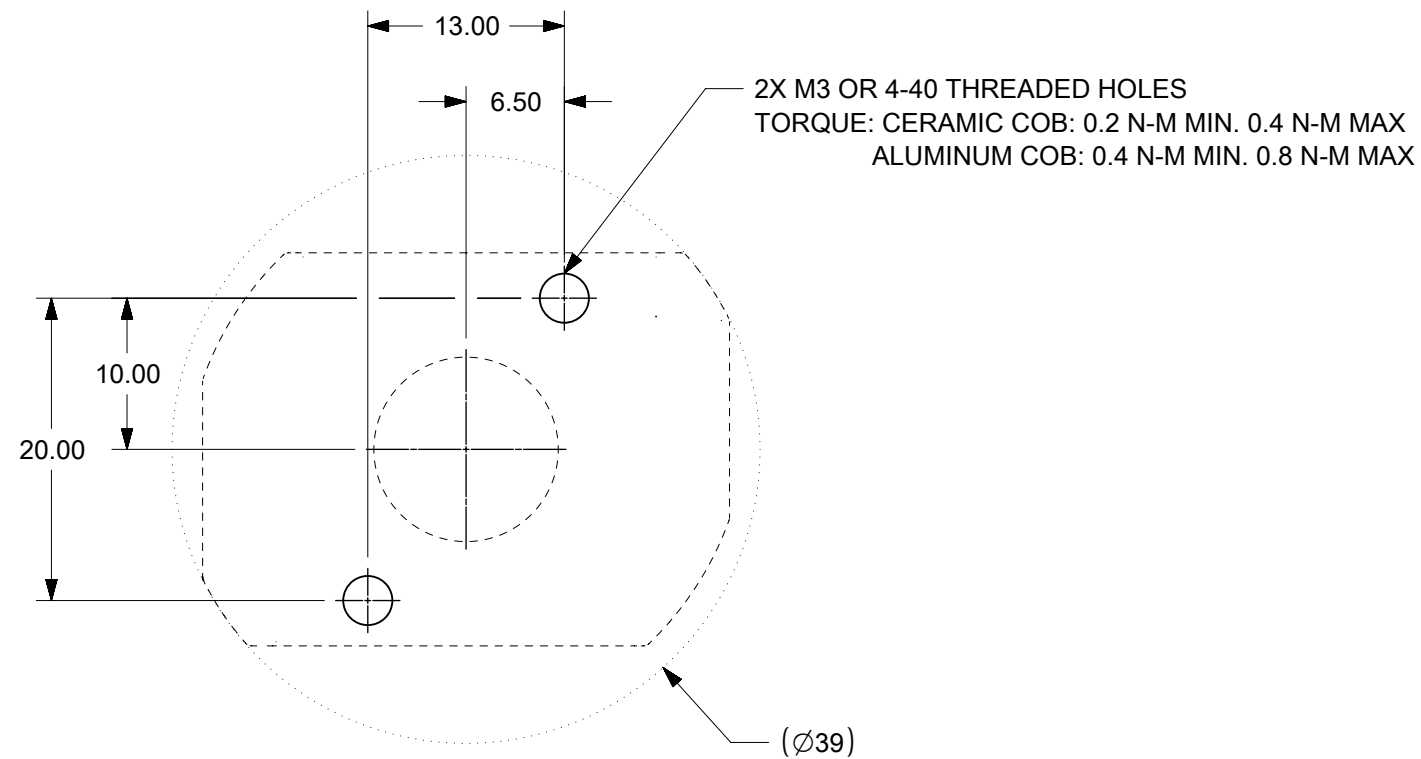


NOTES:

1. MATERIALS: HOUSING AND CAPS: POLYESTER PBT GLASS FILLED; COLOR: WHITE; TERMINAL: COPPER ALLOY
2. FINISHES: TERMINAL CONTACT: SELECT GOLD OVER NICKEL
WIRE TRAP: SELECT TIN OVER NICKEL
3. PRODUCT SPECIFICATION: 180414-0000-PS
4. PACKAGING SPECIFICATION: PK-180419-005
5. UL:OLFB2 UL496 FILE NO. E345583
6. ELV AND ROHS COMPLIANT
7. FOR USE WITH: 13.5 MM X 13.5 MM COB LED
8. WIRE GAUGE: 18, 20, AND 22 AWG, SOLID OR STRANDED WITH TIN OVERCOAT. STRIP LENGTH 10MM +2.0/-0.0MM.
9. ALL DIMENSIONS IN PARENTHESES (XX.XX) ARE FOR REFERENCE ONLY

THIS DRAWING CONTAINS INFORMATION THAT IS PROPRIETARY TO MOLEX ELECTRONIC TECHNOLOGIES, LLC AND SHOULD NOT BE USED WITHOUT WRITTEN PERMISSION									
DIMENSION UNITS		SCALE		CURRENT REV DESC:				molex	
mm		2:1		EC NO: 624787					
GENERAL TOLERANCES (UNLESS SPECIFIED)				DRWN: VLOKESHA		2019/06/13		COB LED HOLDER ASSEMBLY	
4 PLACES		±		CHK'D: GGA		2019/11/11		13.5 MM X 13.5 MM SQUARE	
3 PLACES		±		APPR: GGA		2019/11/11		PRODUCT CUSTOMER DRAWING	
2 PLACES		± 0.13		INITIAL REVISION:				DOCUMENT NUMBER	
1 PLACE		± 0.25		DRWN: MCOLE		2013/12/09		SD-180414-112	
0 PLACES		±		APPR: DMCGOWAN		2013/12/09		DOC TYPE DOC PART REVISION	
ANGULAR TOL		± 0.5°		THIRD ANGLE PROJECTION		DRAWING		PSD 001 C5	
DRAFT WHERE APPLICABLE MUST REMAIN WITHIN DIMENSIONS				SERIES		MATERIAL NUMBER		CUSTOMER	
				B-SIZE		180414		SEE CHART GENERAL MARKET	
				SHEET NUMBER		1 OF 3			

DOCUMENT STATUS	P1	RELEASE DATE	2019/11/11	02:36:40
-----------------	----	--------------	------------	----------

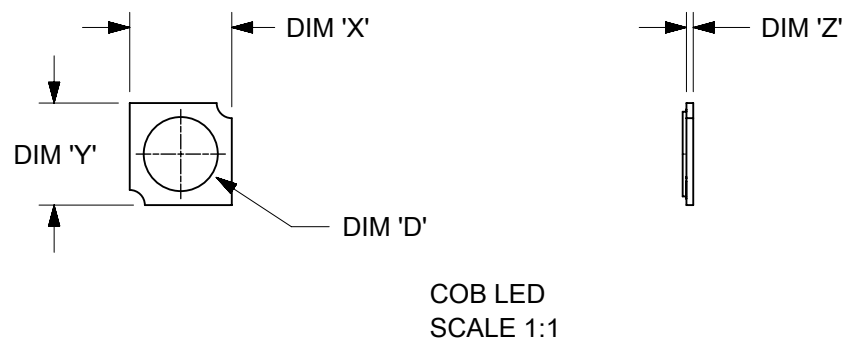
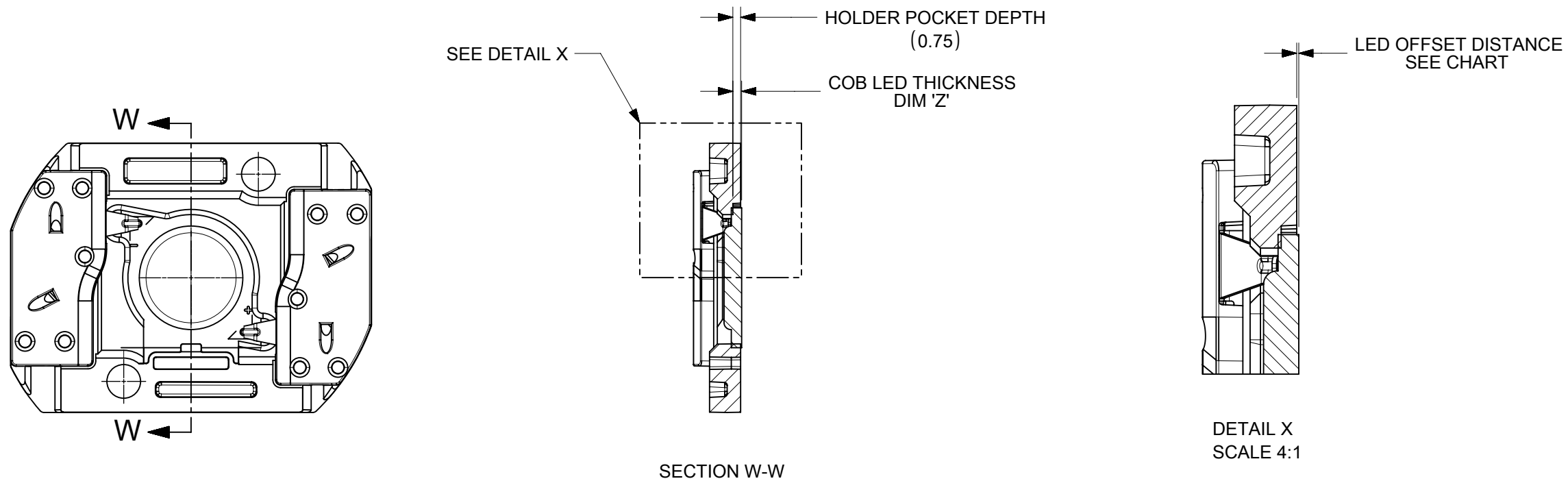


RECOMMENDED MOUNTING DIMENSIONS

THIS DRAWING CONTAINS INFORMATION THAT IS PROPRIETARY TO MOLEX ELECTRONIC TECHNOLOGIES, LLC AND SHOULD NOT BE USED WITHOUT WRITTEN PERMISSION									
DIMENSION UNITS		SCALE		CURRENT REV DESC:				molex	
mm		2:1		EC NO: 624787					
GENERAL TOLERANCES (UNLESS SPECIFIED)				DRWN: VLOKESHA		2019/06/13		COB LED HOLDER ASSEMBLY	
		MM	INCH	CHK'D: GGA		2019/11/11		13.5 MM X 13.5 MM SQUARE	
4 PLACES		±	±	APPR: GGA		2019/11/11		PRODUCT CUSTOMER DRAWING	
3 PLACES		±	±	INITIAL REVISION:				DOCUMENT NUMBER	
2 PLACES		± 0.13	±	DRWN: MCOLE		2013/12/09		SD-180414-112	
1 PLACE		± 0.25	±	APPR: DMCGOWAN		2013/12/09		PSD 001 C5	
0 PLACES		±	±	ANGULAR TOL		± 0.5 °		MATERIAL NUMBER	
DRAFT WHERE APPLICABLE MUST REMAIN WITHIN DIMENSIONS		THIRD ANGLE PROJECTION		DRAWING		SERIES		CUSTOMER	
				B-SIZE		180414		SEE SHEET 1	
								GENERAL MARKET	
								SHEET NUMBER	
								2 OF 3	

	10	9	8	7	6	5	4	3	2	1
	COB MFG	TYPE			DIM 'X'	DIM 'Y'	DIM 'Z'	DIM 'D'	OFFSET	
F	CITIZEN	CLL020, CLL022, CLU024, CLU026, CLU028			13.5	13.5	0.90	11.2	0.15	
	SEOUL	ZC6			13.5	13.5	0.90	10.0	0.15	
	TRIDONIC	SLE G5 LES10			13.5	13.5	0.90	9.4	0.15	
	CITIZEN	CLU025, CLU027			13.5	13.5	0.90	7.4	0.15	
	CITIZEN	CLU700, CLU701			13.5	13.5	0.90	7.8	0.15	
	EVERLIGHT	EAHP1313WA*, EAHP1313WB*, EAHP1313WC*			13.5	13.5	0.90	10.8	0.15	
E	EVERLIGHT	EA1313 36V/3W			13.5	13.5	0.90	10.8	0.15	
	EVERLIGHT	EA1313 36V/6W			13.5	13.5	0.90	10.8	0.15	
	EVERLIGHT	EA1313 36V/10W			13.5	13.5	0.90	10.8	0.15	
	EVERLIGHT	EA1313 36V/13W			13.5	13.5	0.90	10.8	0.15	
	VOSSLOH-SCHWABE	DMC122C			13.5	13.5	1.00	10.0	0.25	

ILLUSTRATION OF P/N 180414-2112 HOLDER MATED WITH LED



THIS DRAWING CONTAINS INFORMATION THAT IS PROPRIETARY TO MOLEX ELECTRONIC TECHNOLOGIES, LLC AND SHOULD NOT BE USED WITHOUT WRITTEN PERMISSION									
DIMENSION UNITS		SCALE		CURRENT REV DESC:					
mm		2:1		molex COB LED HOLDER ASSEMBLY 13.5 MM X 13.5 MM SQUARE PRODUCT CUSTOMER DRAWING					
GENERAL TOLERANCES (UNLESS SPECIFIED)									
4 PLACES	±	MM	INCH						
3 PLACES	±								
2 PLACES	±	0.13							
1 PLACE	±	0.25		EC NO: 624787	DRWN: VLOKESHA	2019/06/13	DOCUMENT NUMBER: SD-180414-112 DOC TYPE: PSD DOC PART: 001 REVISION: C5		
0 PLACES	±			CHK'D: GGA	2019/11/11				
ANGULAR TOL	±	0.5°		APPR: GGA	2019/11/11				
DRAFT WHERE APPLICABLE MUST REMAIN WITHIN DIMENSIONS		THIRD ANGLE PROJECTION		DRAWING	SERIES	MATERIAL NUMBER	CUSTOMER	SHEET NUMBER	
				B-SIZE	180414	SEE SHEET 1	GENERAL MARKET	3 OF 3	